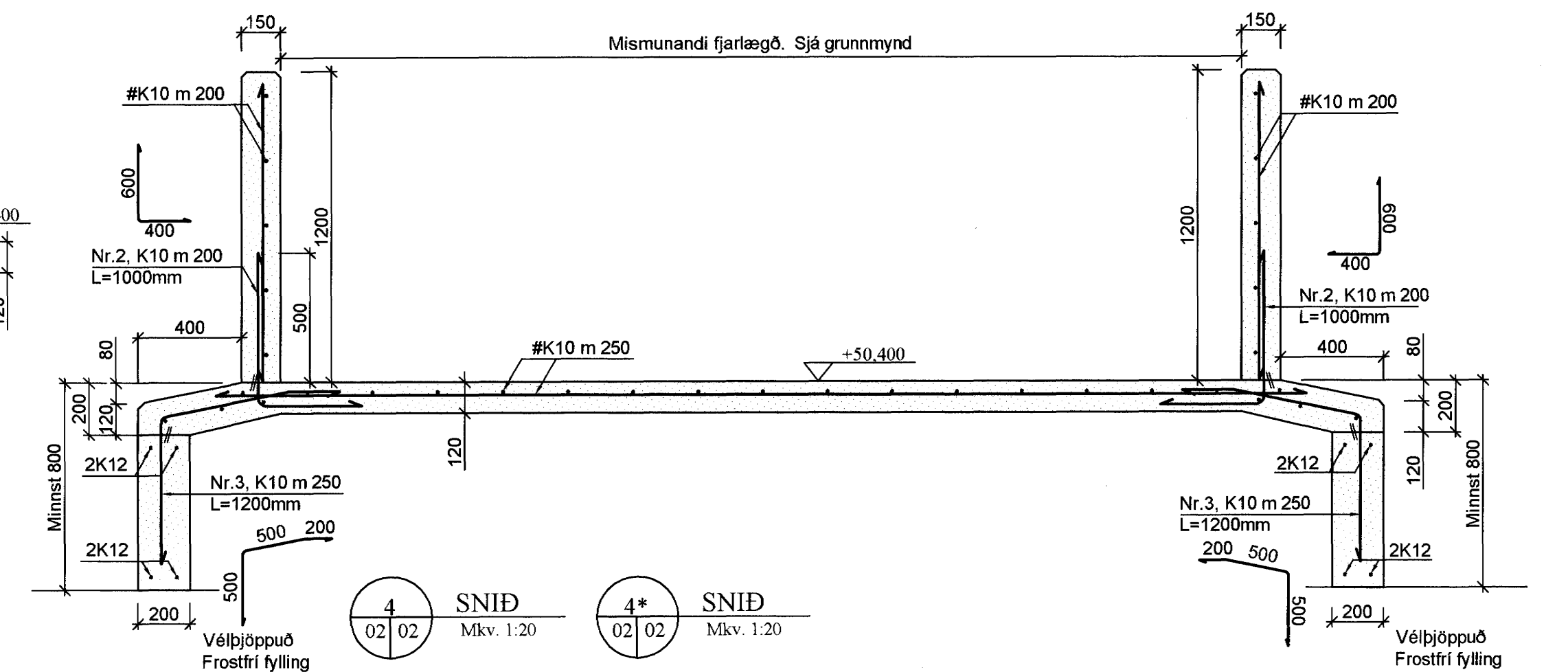
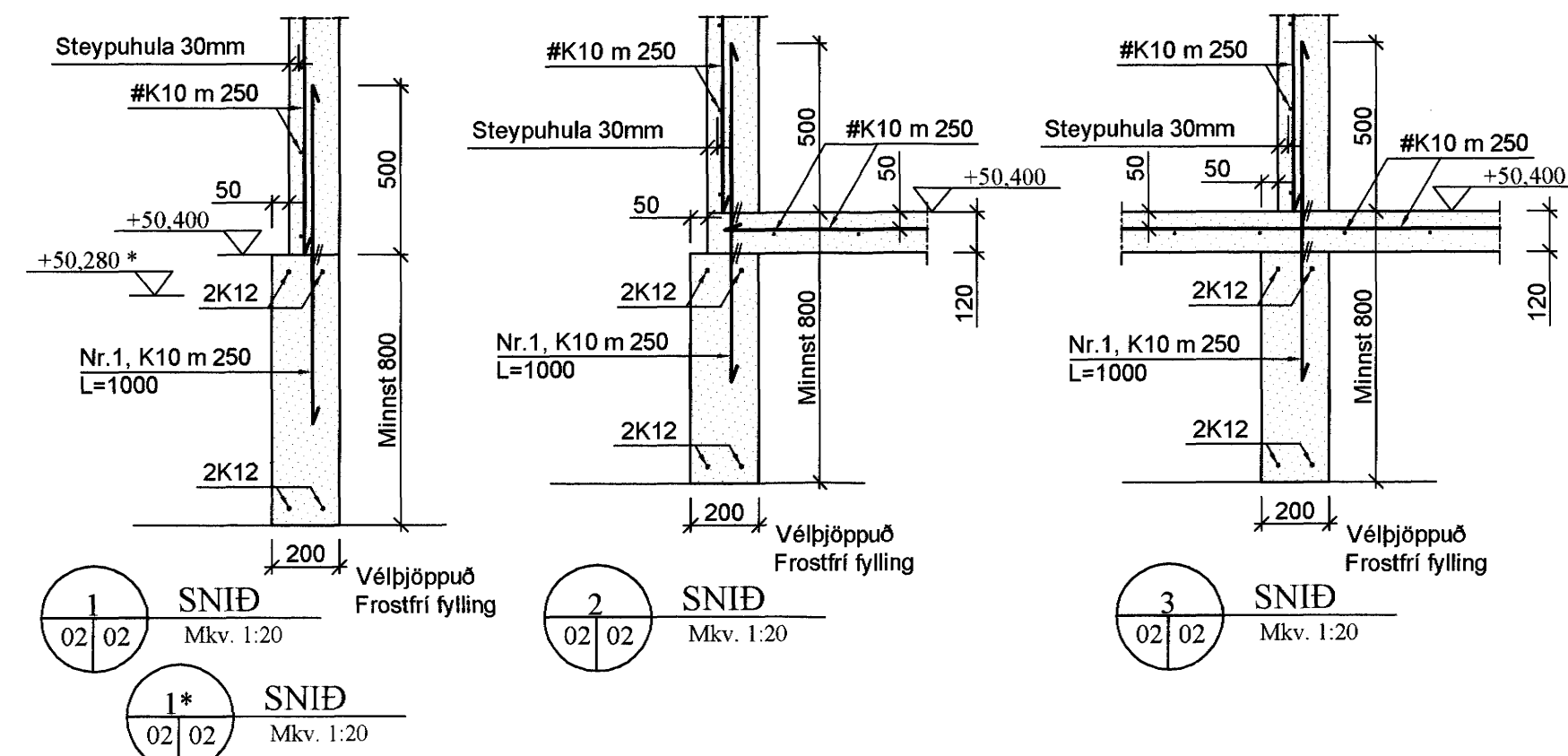
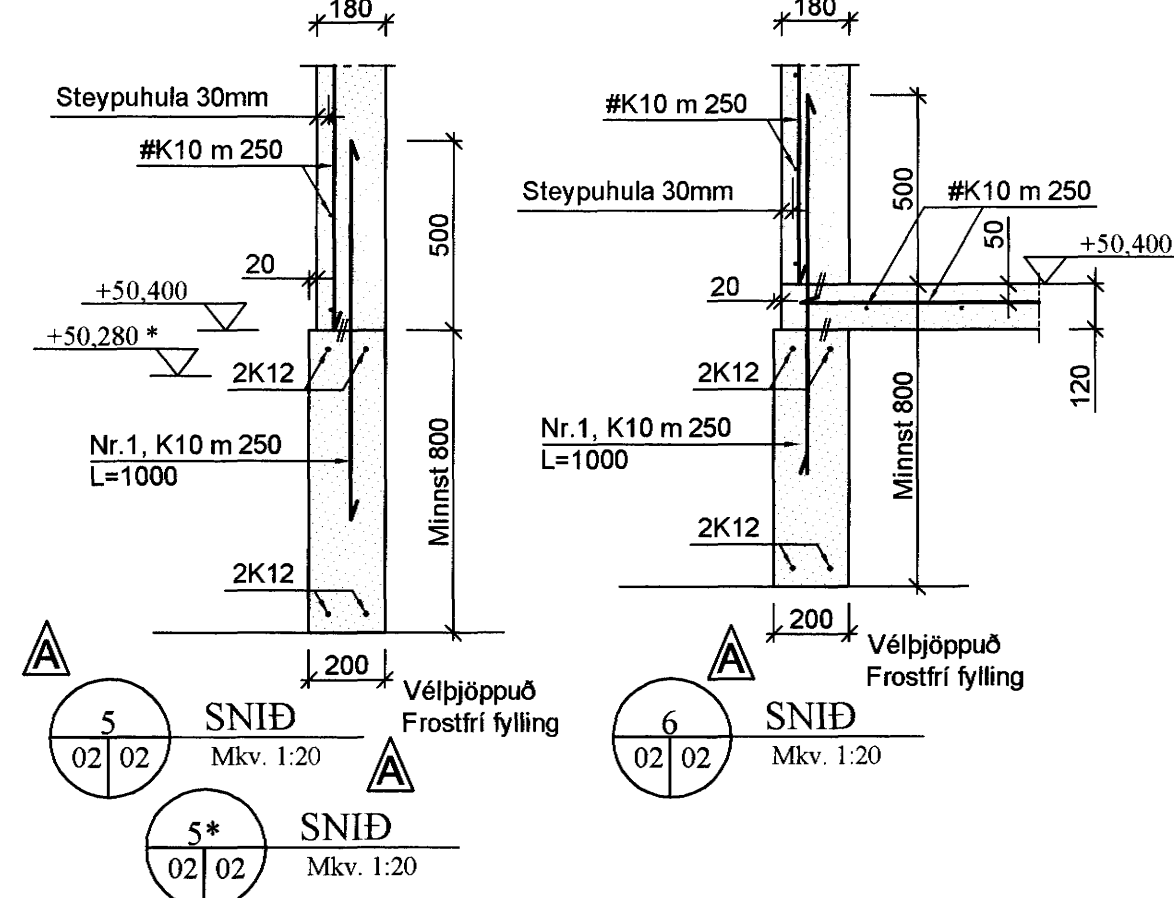


02 Grunnmynd, undirstöður og botnplata
Mkv. 1:50



Einir Alþingis

HESTHÚS Sörlaskeið 24
220 Hafnarfjörður

Byggingafræðingur
Algrætt þann 15. MARS 2002

Burðarvirki

Undirstöður og Botnplata
Grunnmynd, SNÍÐ

Egill Viðarsson, Byggingarverkfræðingur, VFI
Sími: 564 3945, 861 8086, egill@aknet.is