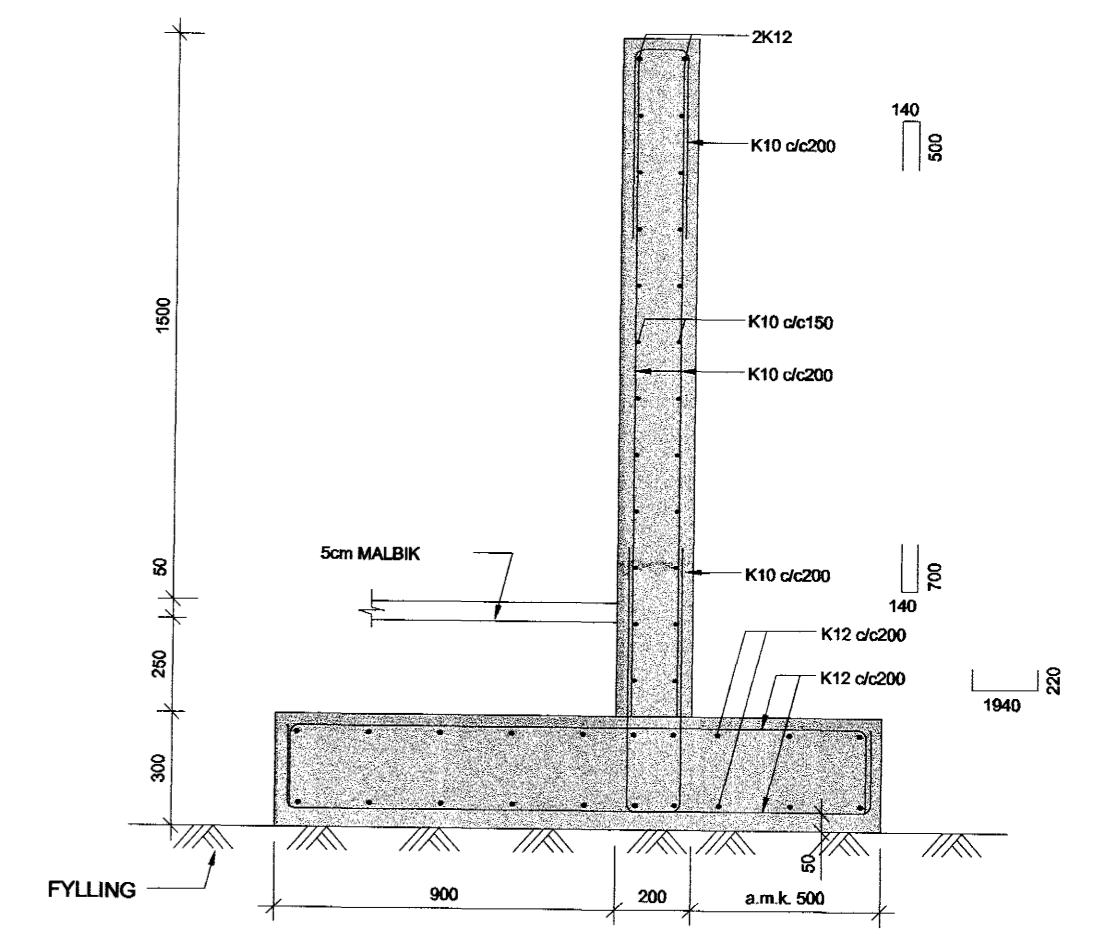
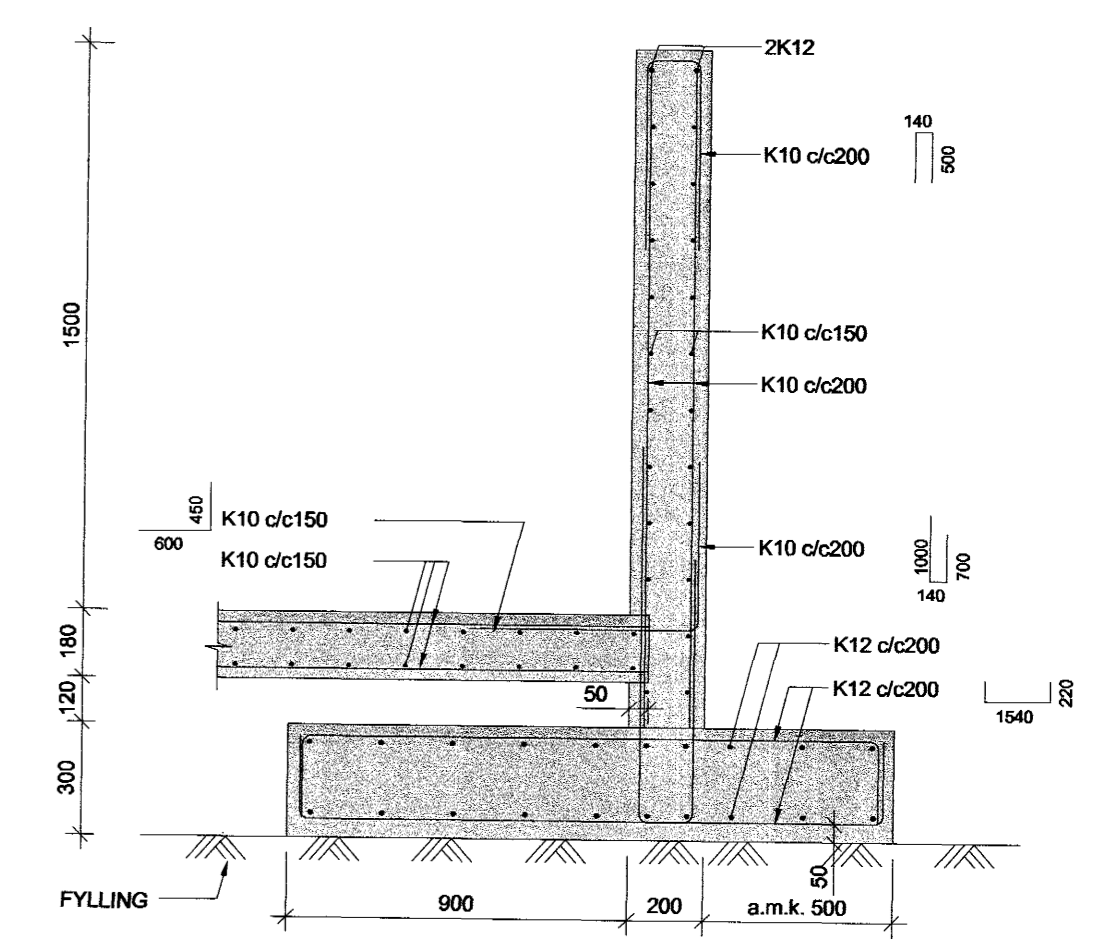


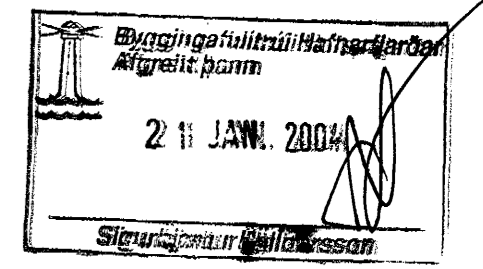
STEYPTUR VEGGUR OG SLITLAG - KVARDI 1:20



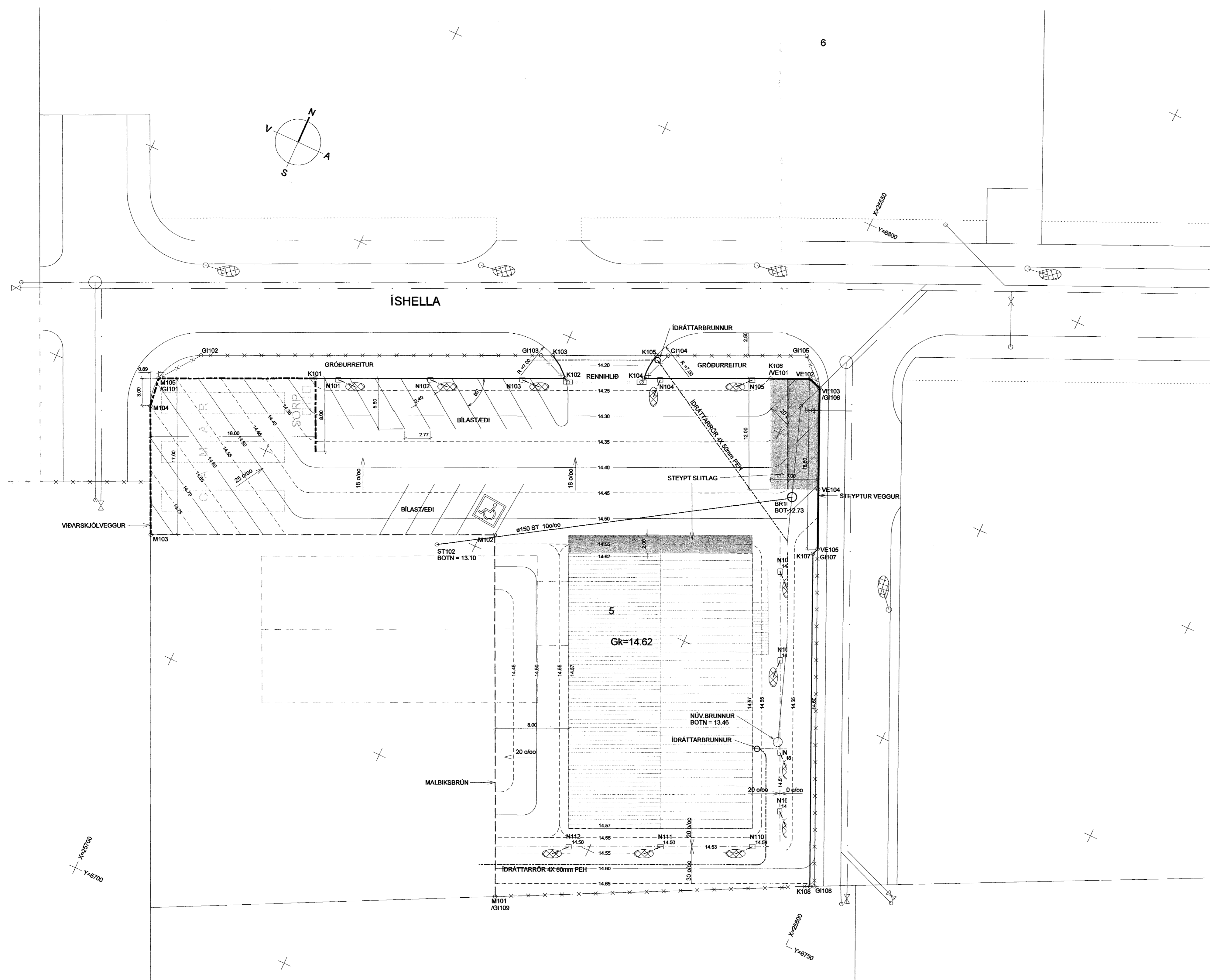
**STEYPA-STÖÐVEGGUR:**  
 BROTHOLSFOKKUR: C25/35  
 SEMENTSMAGN: MÍNNS 300kg/m<sup>3</sup>  
 VATNSSEMENTSTLA: <math>-0,55</math>  
 HÁMRSTEINASTÆRD: 25mm  
 LOFTINNHALD: 5-6%  
 SIGMÁL: 50-90mm

**STEYPA-SLITLAG:**  
 BROTHOLSFOKKUR: C40/50  
 SEMENTSMAGN: MÍNNS 320kg/m<sup>3</sup>  
 VATNSSEMENTSTLA: <math>-0,50</math>  
 HÁMRSTEINASTÆRD: 25mm  
 LOFTINNHALD: 5-6%  
 SIGMÁL: 50-90mm

**JÁRNABENDING:**  
 KAMBSTÁL MEÐ FLÖTSTYRK 500N/mm<sup>2</sup>.  
 STEYPUHLAÐ JÁRN SKAL VERA 30mm NEMA ANNAD SÉ SÝNT A  
 TEKNINGU.



*Alfreit Þorm.*

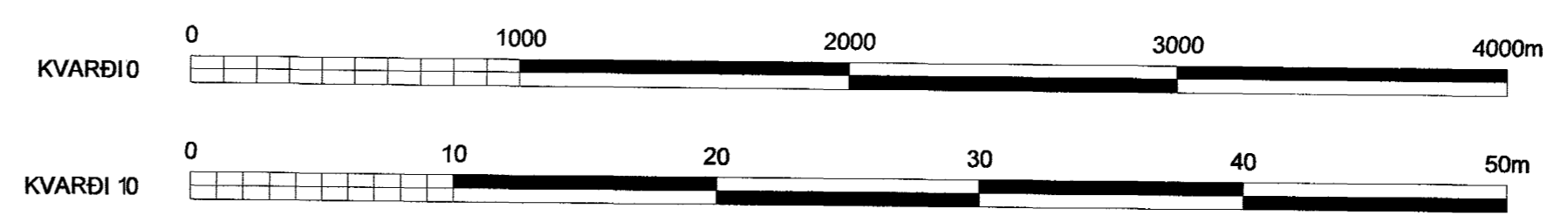


HNITASKRÁR

Kantasteinn			Niðurföll			Girðing		
Pkt.	Xhnit	Yhnit	Pkt.	Xhnit	Yhnit	Pkt.	Xhnit	Yhnit
K101	25696.312	6759.402	N101	25695.971	6760.294	GH101	25713.878	6752.300
K102	25673.588	6770.880	N102	25696.873	6764.444	GH102	25710.722	6756.488
K103	25675.351	6772.396	N103	25677.775	6768.594	GH103	25678.989	6771.672
K104	25665.779	6774.241	N104	25664.128	6774.820	GH104	25664.442	6777.600
K105	25665.592	6777.076	N105	25655.030	6778.970	GH105	25650.156	6784.118
K106	25663.276	6779.946	N106	25643.849	6781.261	GH106	25647.403	6781.528
K107	25640.354	6764.950	N107	25639.623	6752.436	GH107	25640.134	6765.607
K108	25625.338	6731.968	N108	25635.473	6743.340	GH108	25624.895	6732.188
			N109	25632.816	6737.516	GH109	25657.114	6716.175
			N110	25633.524	6732.787			
			N111	25643.014	6728.599			
			N112	25632.103	6724.430			
Malbiksbrún			Brunnar / Stútar			Steyptur veggur		
Pkt.	Xhnit	Yhnit	Pkt.	Xhnit	Yhnit	Pkt.	Xhnit	Yhnit
M101	25657.114	6716.175	BR101	25645.068	6769.561	VE101	25663.276	6779.946
M102	25675.545	6752.092	ST102	25678.838	6748.424	VE102	25648.727	6782.021
M103	25707.628	6736.454				VE103	25647.403	6781.528
M104	25713.443	6749.201				VE104	25642.837	6771.519
M105	25713.878	6752.300				VE105	25640.139	6765.605

SKÝRINGAR

- GIRÐING
- SJA NÁNAR UM UPPSETNINGU Í VERKLYSINGU OG VÍDAUKA
- RENNHLÍÐ
- SJA NÁNAR UM UPPSETNINGU Í VERKLYSINGU OG VÍDAUKA
- MALBKSBRÚN
- STEYPTUR VEGGUR
- SJA SNIB OG VERKLYSINGU
- VÍÐARSKJÓLVEGGUR
- SJA NÁNAR Í VERKLYSINGU
- SKÓLFLÖGN, ø150 OG BRUNNUR
- IDRÁTTARRÖR, ø150 OG BRUNNUR
- IDRÁTTARRÖR, ø4x 50mm PEH OG -BRUNNUR
- STEYPT SLITLAG
- SJA SNIB OG VERKLYSINGU
- YFIRBORÐSHÉÐ NIÐURFALLS
- NIÐURFALL
- GRJÓTPÖKKUR



BR.	DAGS.	BREYTING	REIKN.	TEIKN.
<b>BLENDI ehf. ÍSHELLA 5</b>				
LÓÐARFRÁGANGUR			HANNAÐ/TEIKN.	EKS/SJ
			ATH.	ATH.
			SAMBÝKKT	<i>Alfreit Þorm.</i>
			KT.	20-017-374
KVARDI A3 1:500 / A1 1:250			REYKJAVÍK	12.11.2003
			VERKNR.	TEIKN. NR.
			03211	01