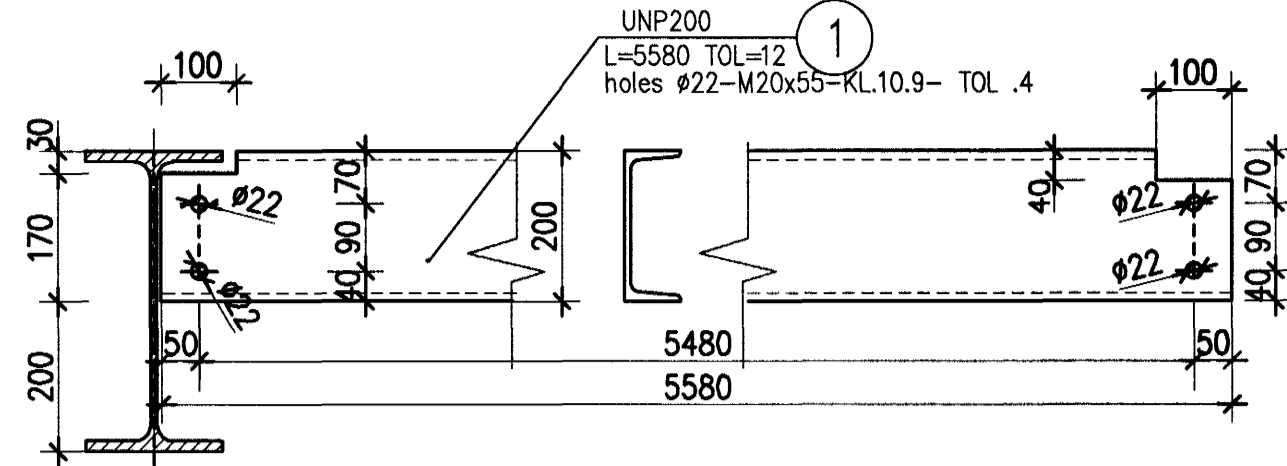


Biti UNP200 PURLIN P-2 PCS.12



Biti UNP200 PURLIN P-1 pcs.12

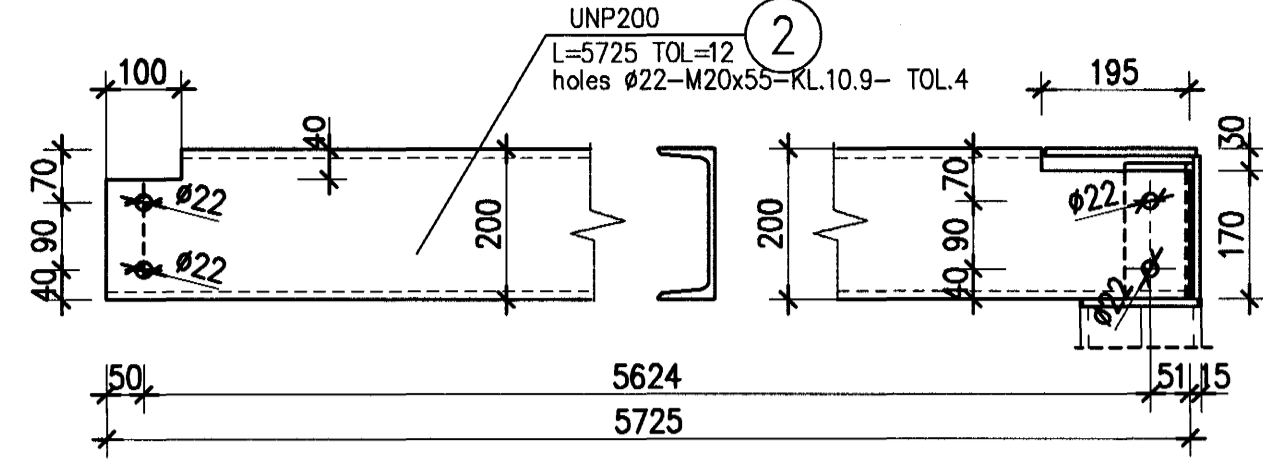


PLATE-PURLIN B-1

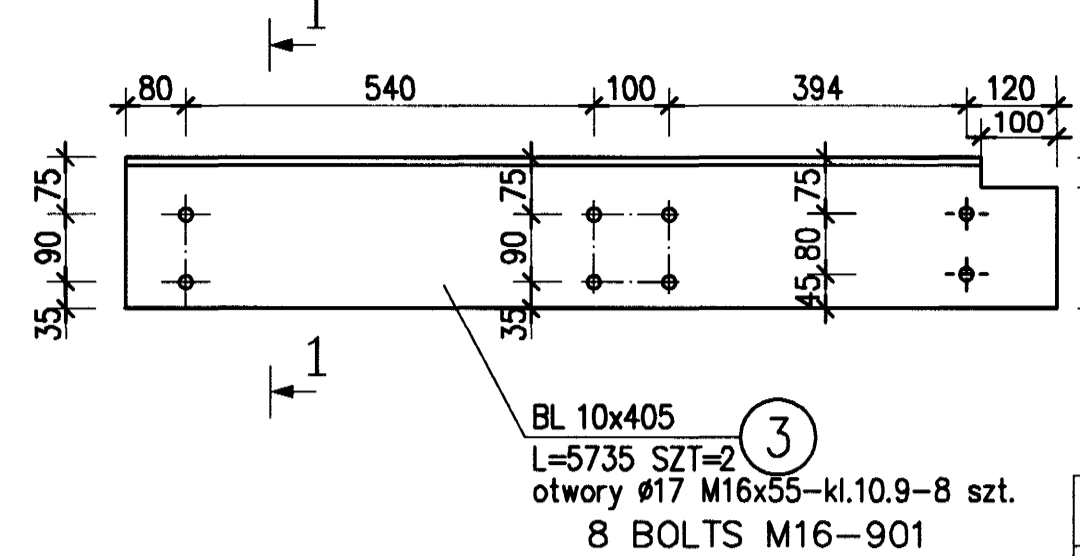


PLATE-PURLIN-(PLATEW B-2-PCS.2) 1-1

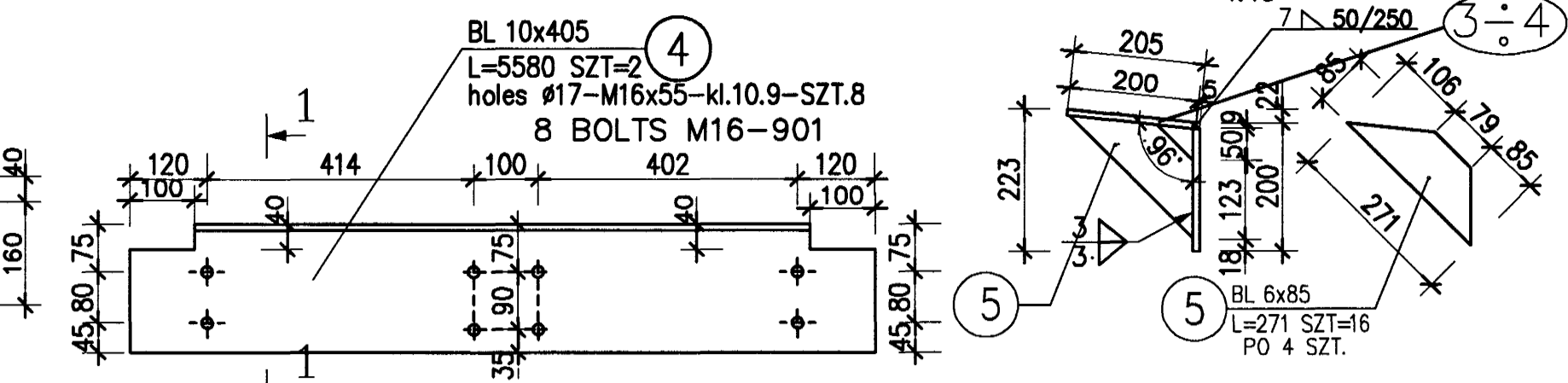
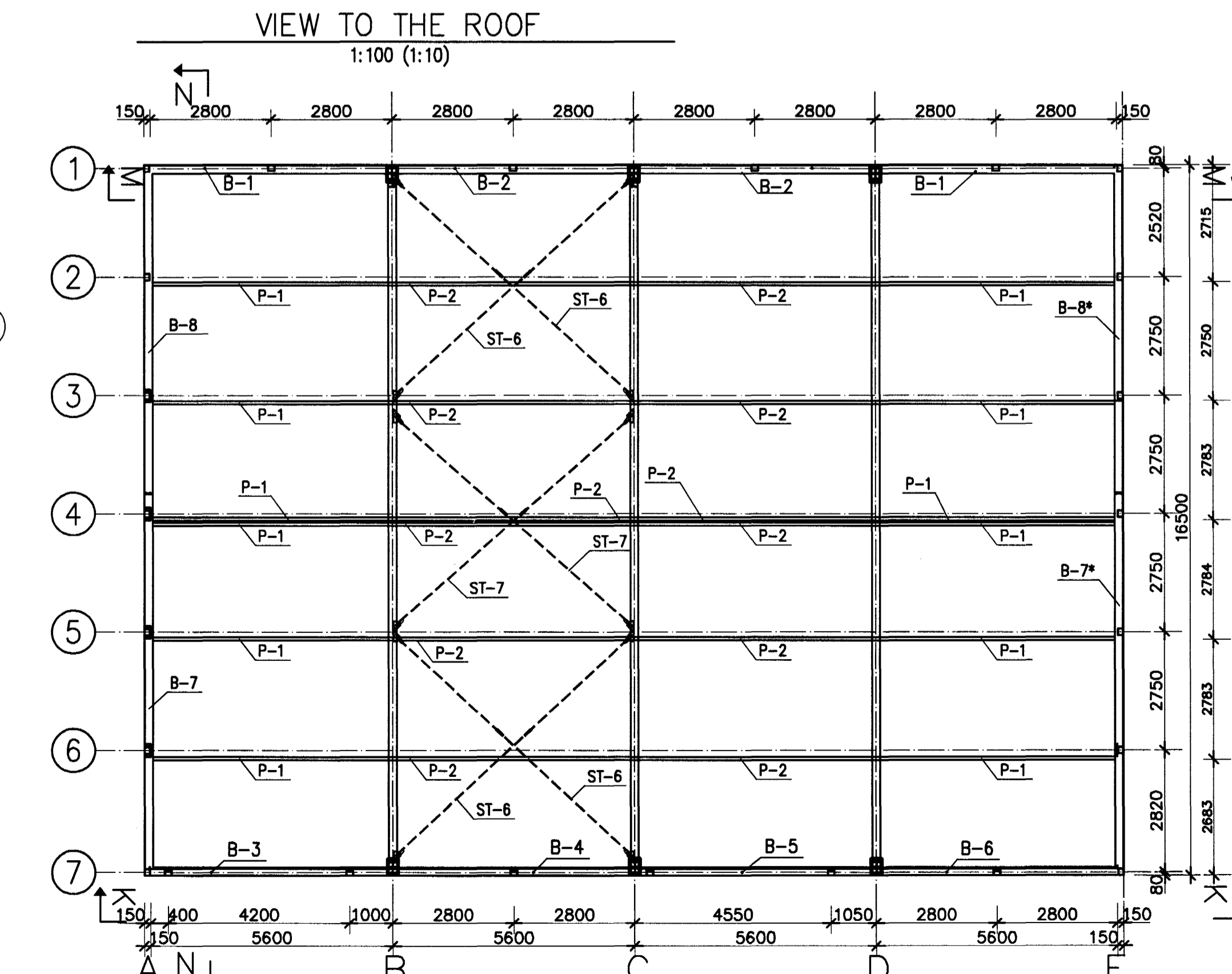
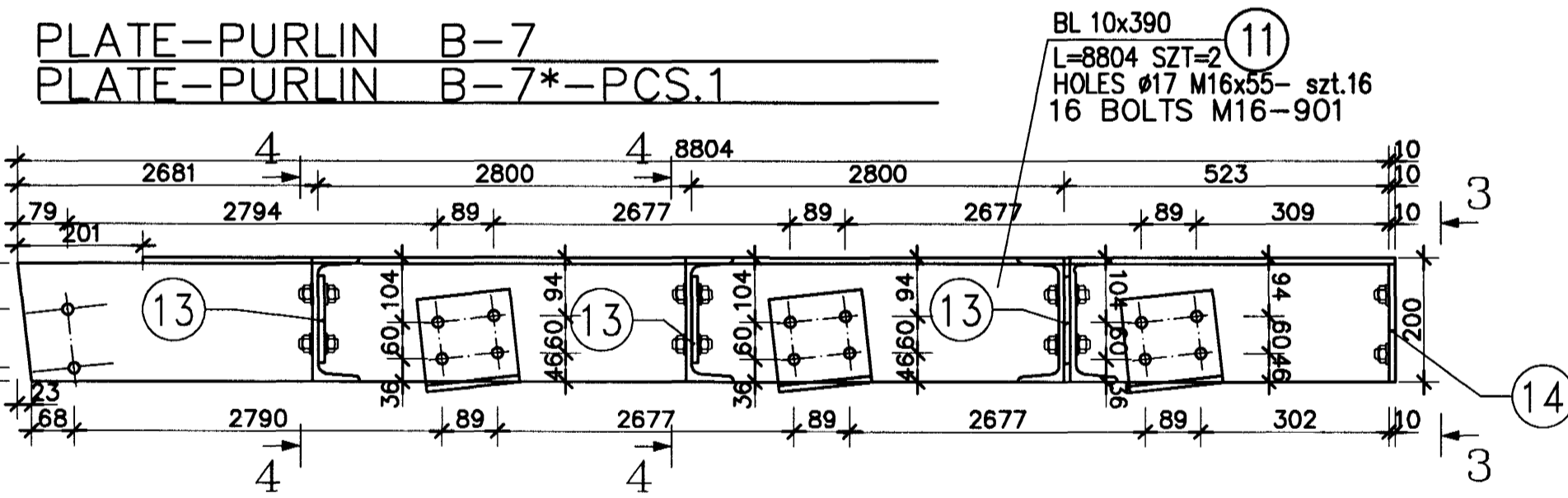
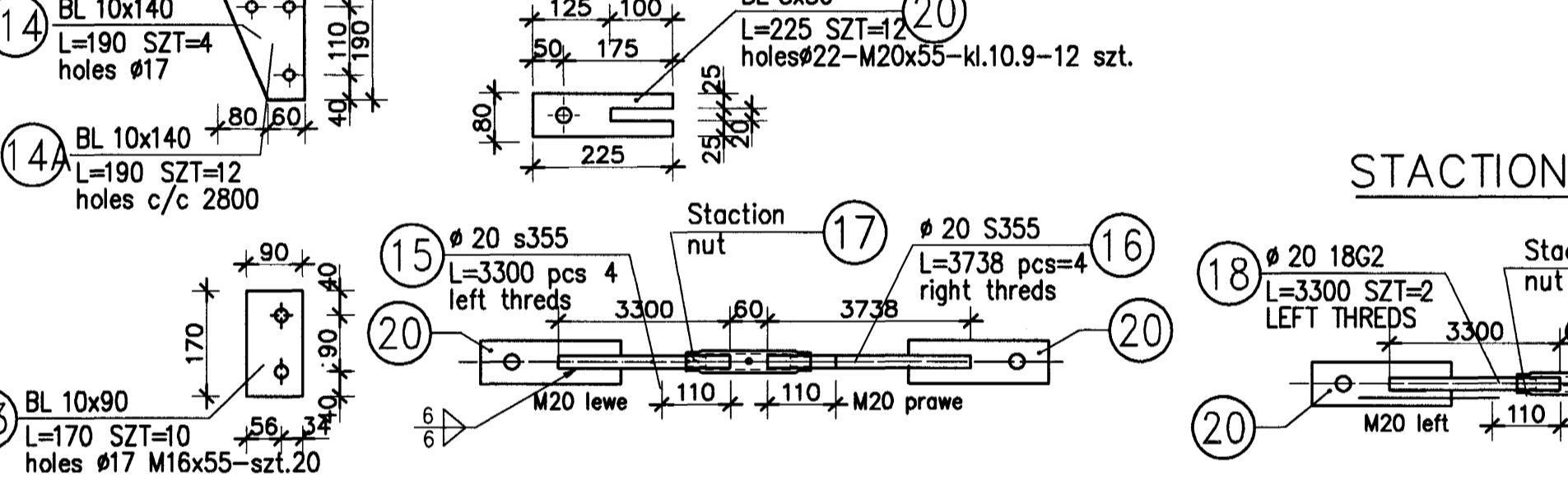
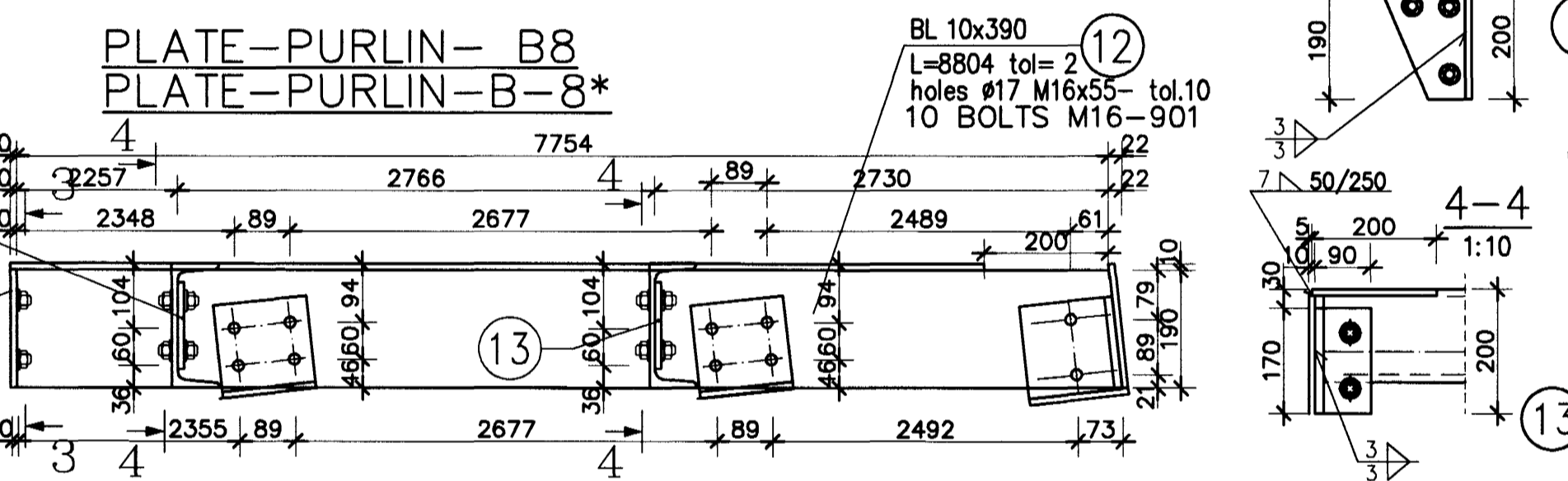
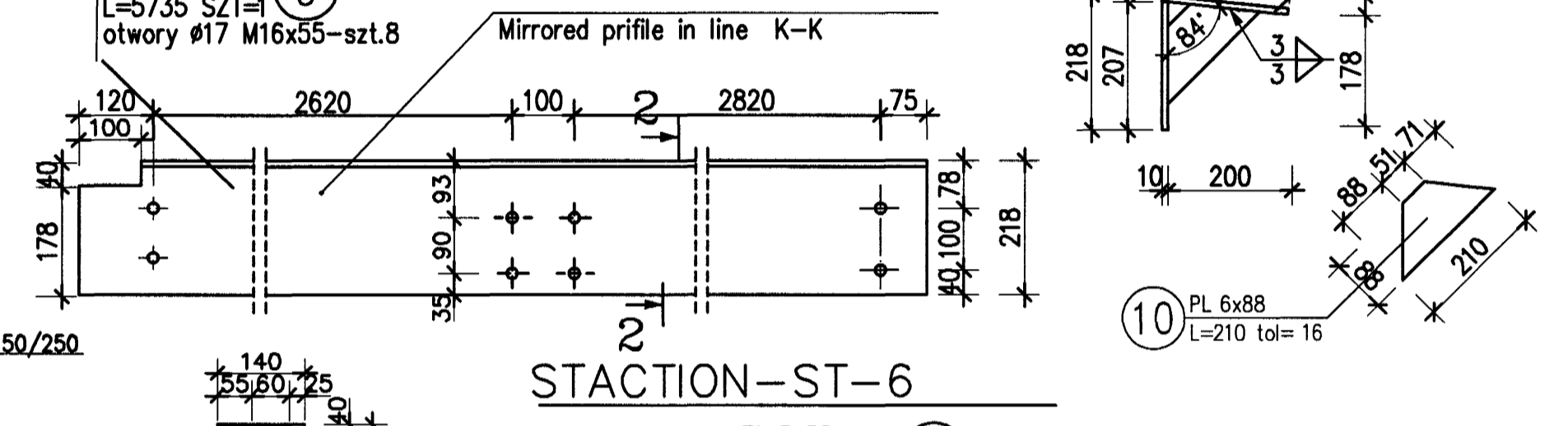
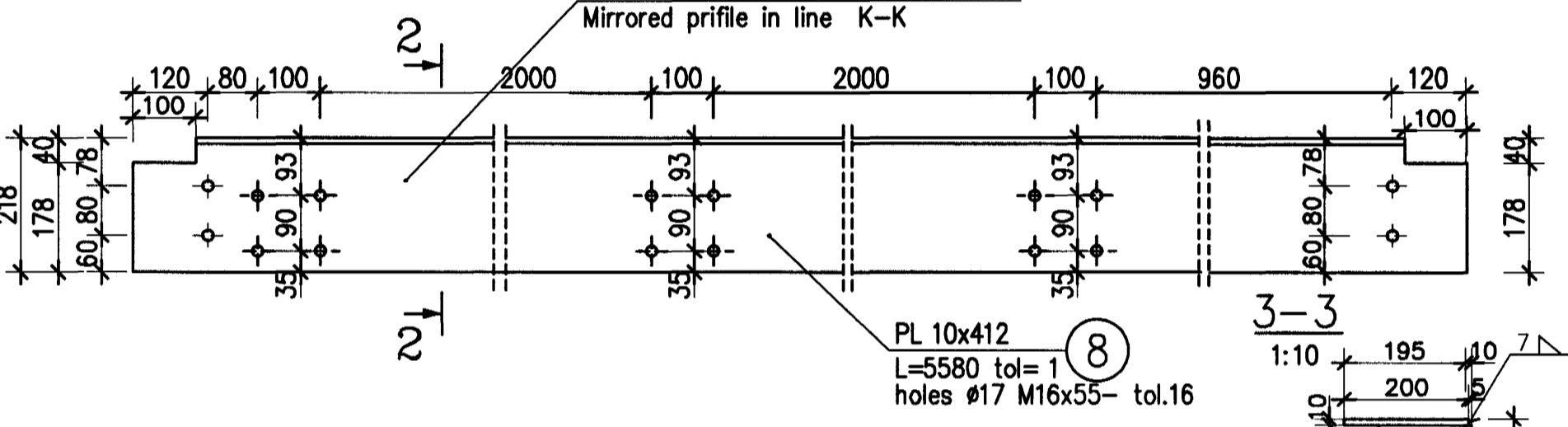
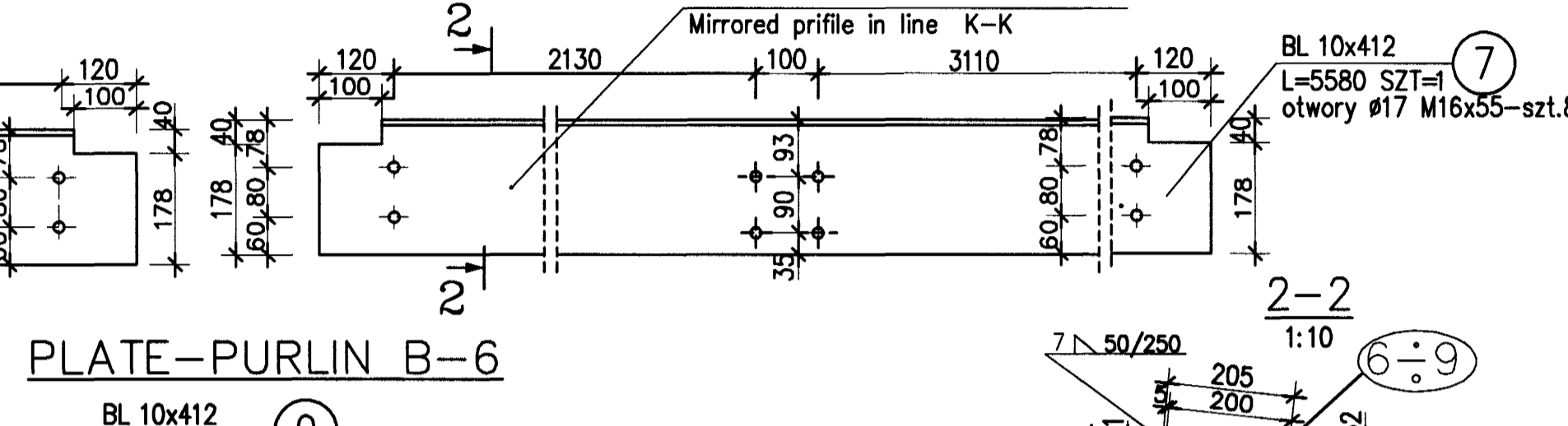
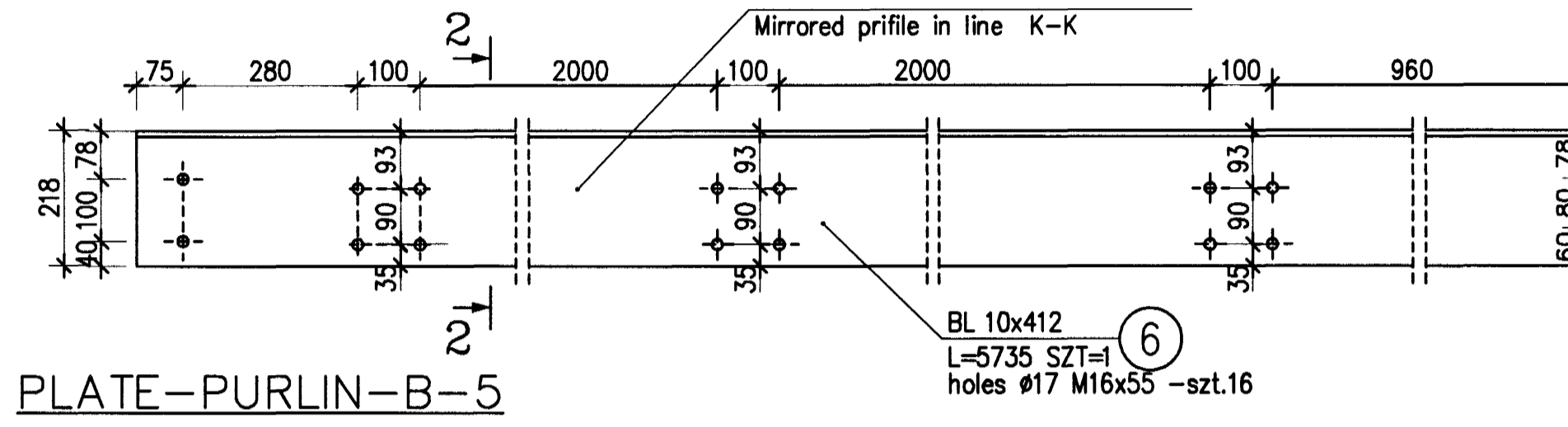


PLATE-PURLIN- B-3

PLATE-PURLIN B-4



LIST OF MATERIALS--ZESTAWIENIE OF STEEL

ELEMENT	NUMBER	TYPE OF ELEMENT	LENGTH [mm]	QUALITY OF STEEL	TOTAL PCS.	LENGTH TOT [m]	WGT / UNIT [kg/m]	WGT 1 ELEM [kg]	WGT TOT [kg]	AREA / UNIT [m2/m]	AREA 1 ELEM [m2]	AREA TOT [m2]	UNAJ
P-2	1	I 200	5580	S355	12	66.96	25.30	141.17	1694.09	0.66	3.68	44.18	
P-1	2	I 200	5725	S355	12	68.70	25.30	144.84	1738.11	0.66	3.78	45.33	
B-1	3	PL 10x405	5735	S355	2	11.47	31.79	182.33	364.66	0.83	4.76	9.52	
B-2	4	PL 10x405	5580	S355	2	11.16	31.79	177.40	354.80	0.83	4.63	9.26	
B-1+B-2	5	PL 6x85	271	S355	16	4.34	4.00	1.08	17.36	0.18	0.05	0.79	
B-3	6	PL 10x412	5735	S355	1	5.74	32.34	185.48	185.48	0.84	4.84	4.84	
B-4	7	PL 10x412	5580	S355	1	5.58	32.34	180.47	180.47	0.84	4.71	4.71	
B-5	8	PL 10x412	5580	S355	1	5.58	32.34	180.47	180.47	0.84	4.71	4.71	
B-6	9	PL 10x412	5735	S355	1	5.74	32.34	185.48	185.48	0.84	4.84	4.84	
B3-B6	10	PL 6x85	210	S355	16	3.36	4.14	0.87	13.93	0.19	0.04	0.63	
B-7	11	PL 10x390	8804	S355	2	17.61	30.62	269.53	539.07	0.80	7.04	14.09	
B-8	12	PL 10x390	8804	S355	2	17.61	30.62	269.53	539.07	0.80	7.04	14.09	
B-7+B-8	13	PL 10x90	170	S355	10	1.70	7.07	1.20	12.01	0.20	0.03	0.34	
B-7+B-8	14A	PL 10x140	190	S355	12	2.22	11.78	2.18	26.14	0.32	0.06	0.71	
B-7+B-8	14	PL 10x140	190	S355	4	0.74	11.78	2.18	8.71	0.32	0.06	0.24	
ST-6	15	# 20 S355	3300	S355	4	13.20	2.47	8.14	32.55	0.06	0.21	0.83	
ST-6	16	# 20 S355	3738	S355	4	14.95	2.47	9.22	36.87	0.06	0.23	0.94	
ST-7	18	# 20 S355	3300	S355	2	6.60	2.47	8.14	16.28	0.06	0.21	0.41	
ST-7	19	# 20 S355	3860	S355	2	7.72	2.47	9.52	19.04	0.06	0.24	0.49	
ST-6+ST-7	20	PL 8x80	225	S355	12	2.70	5.02	1.13	13.56	0.18	0.04	0.48	
		Bolts M20x55		M10.9	96			0.34	32.64				ocynk.
		Bolts M16x55		M10.9	4			0.15	0.6				ocynk.
		Bolts M16x55		M10.9	140			0.15	21.0				ocynk.
		ST-6+ST-7 17 STATIONS MADE OF ROUNDSTEEL 20x200-CLASS.10.9		M10.9	140			0.644	13.86				ocynk.
		Additions							6216.25			161.43	
		Additions by welds: 1.8%							111.89			2.91	
		Additions by tolerance: 2%							124.33			3.23	
		Additions by plates: 1.5%							93.24			2.42	
		TOT:							6546.0			168.99	

NOTICE!
 1. STEEL S355 (S355)
 2. SYMBOLS PL=PLATE
 3. POSITION 900=BOLT M22x55 CLASS 10.9
 4. POSITION 901=BOLT M16x55 CLASS 10.9

Samblykt þann
 16 DES. 2003
 Byggingafrullráðgjafi
 Fh. Sigurbjartur Halldórsson

Breyting nr.	Lýsing breytinga	Dags breytt	Undirrit.	Yfirfarir
<p>TEKNIstofan NYBYLI Nýbýlavegur 22 200 Kópavogur Sími 554-0098 Kt. 180449.4699</p>				
Liðis Magn	Undirritun:	Verk nr. 330		
Hannað af S. Ingi	Yfirfarir af Samblykt af	Skráarnafn FISKUR_1sl	Dags. 24.07.99	Kvarði 1:10
Grandatröð 5 Hafnarfj. Stálsmíði burðargrind	Hlutatekning grindarlhuta Þakásar	05	Útgáfa 0	Blað 5/10