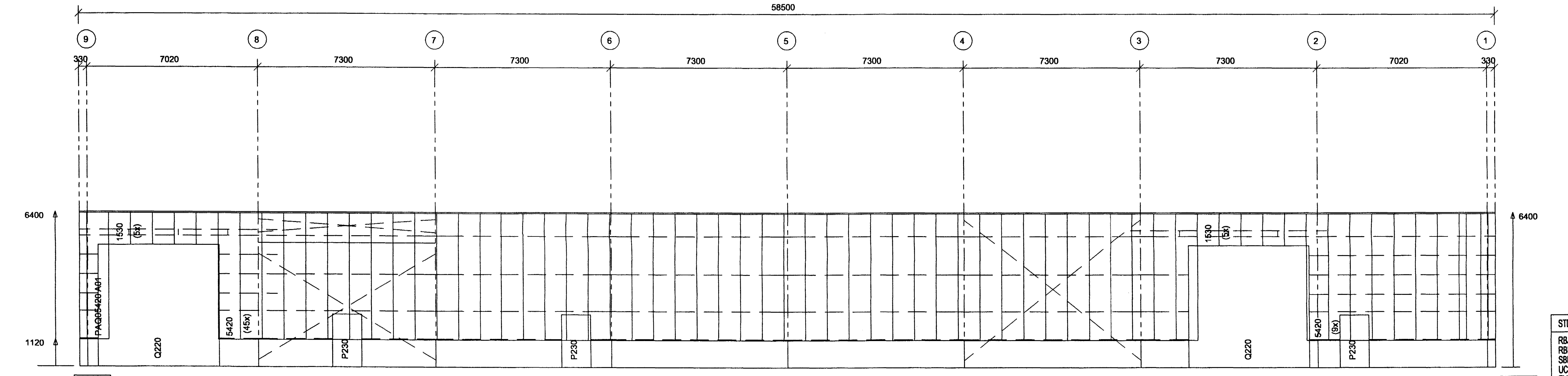


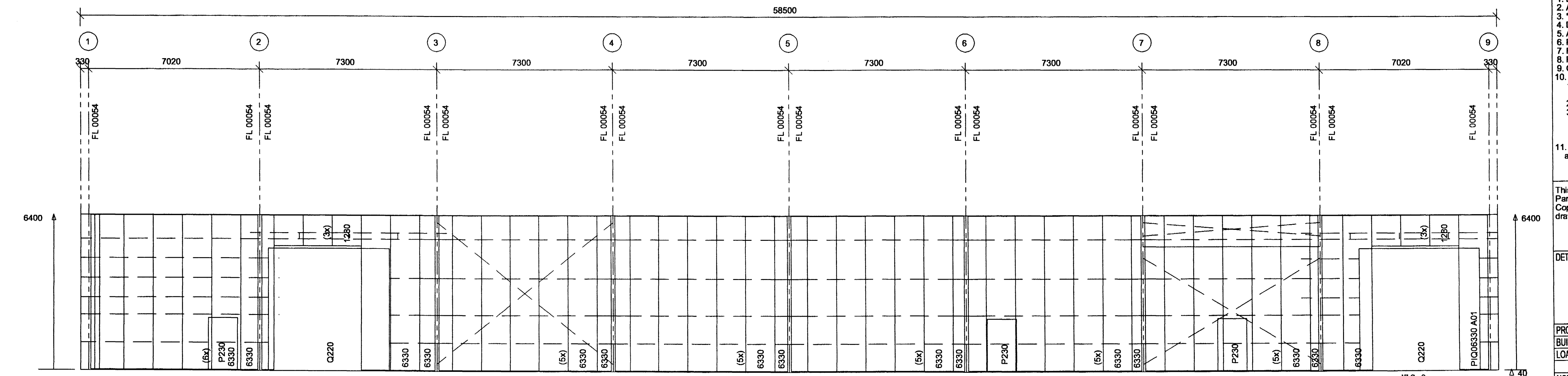
SIDEWALL AXIS A - FRAMING

(SCALE: 1/100)



SIDEWALL AXIS A - SHEETING

(SCALE: 1/100)



SIDEWALL AXIS A - INSIDE SHEETING

(SCALE: 1/100)

I case of strong wind, doors have to be kept closed!

STD PROFILES DESCRIPTION LIST	NSTD PROFILES DESCRIPTION LIST
RBJ: TIE ROD DIAM 24 RBK: TIE ROD DIAM 30 SBH: STRUT PIPE 168 * 4.0 UCQ: SILL CHANNEL 254*77*1.95 ZLI: ZEE LAP COND. 254*2.00 ZLJ: ZEE LAP COND. 254*2.30 ZLK: ZEE LAP COND. 254*2.70 ZLN: ZEE LAP COND. 254*1.70	XCH-A: DOOR HEADER 305mm XCL-A: DOOR JAMB 305mm
<b>TECHNICAL NOTES</b> 1. Drawings to read in conjunction with ASTRON technical manual 2. All measures in millimeters 3. * = Field adapted 4. Design of foundations by local engineer 5. Applicable column reactions see chart "Foundation Reactions" 6. Purlin spacings are rounded to mm and cannot be added 7. Flange bracings installation per standard detail W1 chapter 8. Field locate roof openings and accessories 9. Compensation of panel tolerance currently during installation 10. Unless noted differently: 1) Purlin diaphragms - At peak (see W316, W326, W327) - Double purlins (see W311, W321) 2) Wind bracing details, see chapter W2 3) Roof stabilisation if necessary: - Purlin spacers (HSA, HSB, HSC, HSD. SEE W37 AND W38) - Sag rods (RSG...) see W5 and cross section - Tie straps (TIC 250) see W7 chapter 11. Field cut and adapt girts and panels shown in overlap with an accessory element	
This design is the property of ASTRON BUILDINGS, a Division of Parker Hannifin. Copying and manufacturing components according to these drawings or calculations is illegal.	
DET: 4T100 4T199 4T200 4T225 4T226 4T31 4T35 4T43 S141 K280 K281 K282 K283 S131 S136 S143 S182 S187 S231 S243 S331 S332 S333 S334 V431 V443 V486 W211 W212 W221 W222 W241 W321	
This design is the property of ASTRON BUILDINGS, a Division of Parker Hannifin. Copying and manufacturing components according to these drawings or calculations is illegal.	
PROJECT: Berghella MHL-2 - Hafnarfjörður Iceland BUILDING: AZM1 24.9% SPAN:17.000m EH:6.400m L:58.50m ALT. LOADS: LLW/Adxl: 100/16020 (Da/In2)	
B/D: Stalex CRANE: 60kN DATE: 05/04/02 ENG: W. Altmann DRAF: K. Olsson	
<b>ASTRON</b> ASTRON BUILDINGS S.A. - P.O. Box 152 - L-9202 DIEKIRCH-LUXEMBOURG - Tel: +352 80 29 11 - Fax: +352 80 34 66	

K.Rafnsson Tækniþjónusta  
 Klapparstíg 20 • 101 Reykjavík  
 Kt. 220850-2189

20 NOV. 2002

108560

SW-1