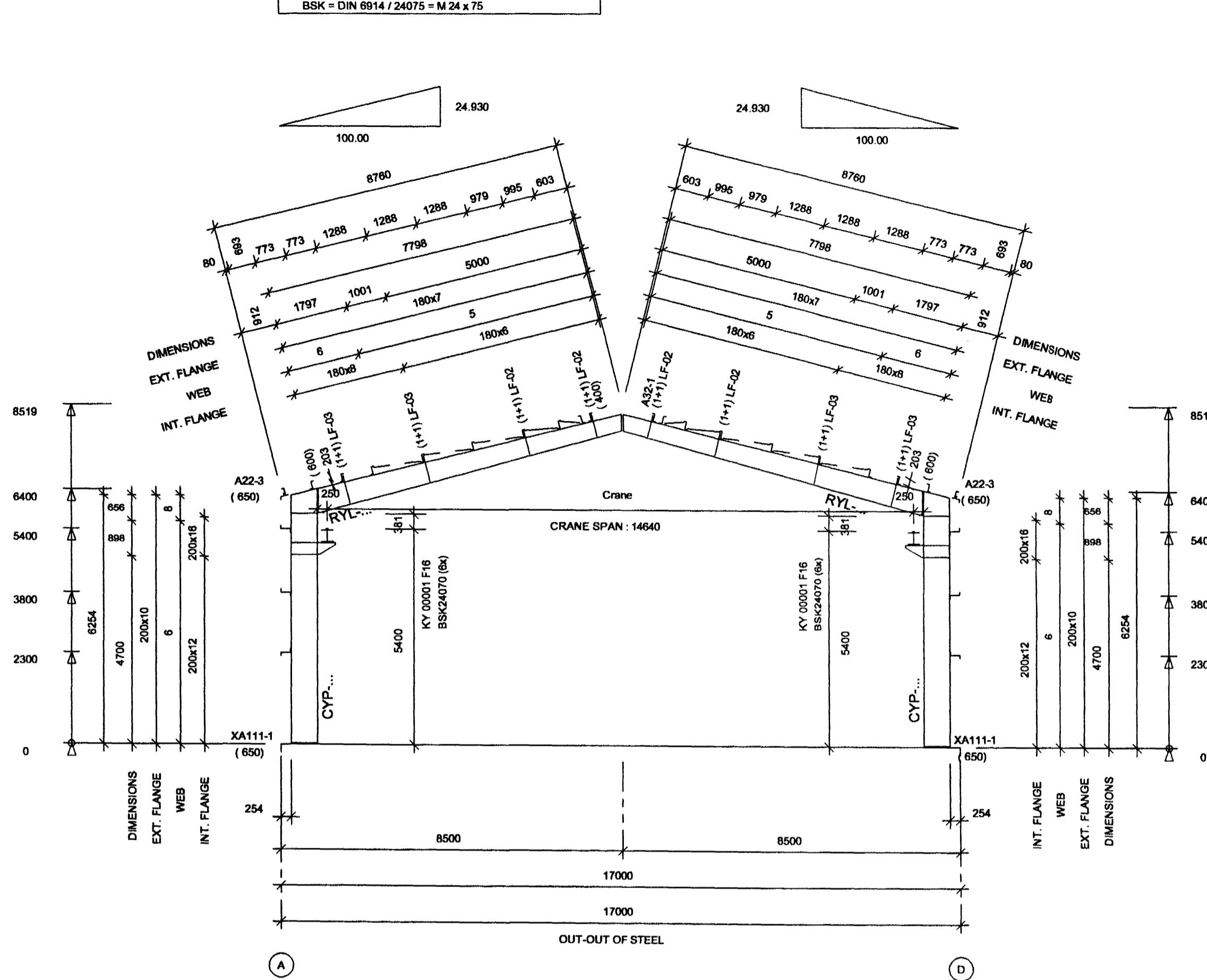
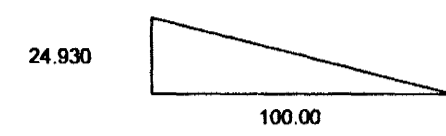
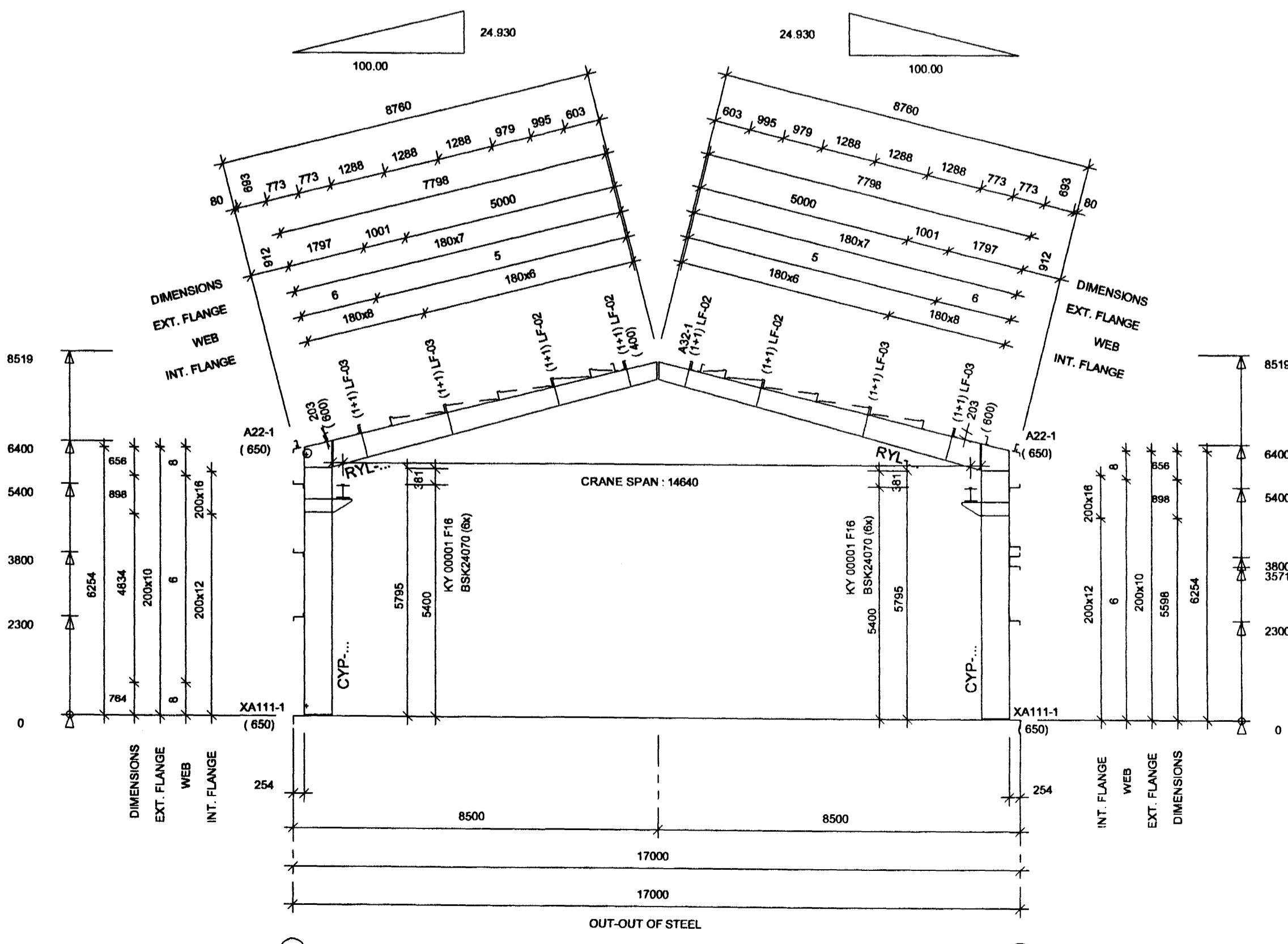


CONNECTION	BOLT	QTY
A22-3	BSK24075	0.4 - 2.2
A32-1	BSK20075	2.2 - 2.2
BSK = DIN 6914 / 24075 = M 24 x 75		



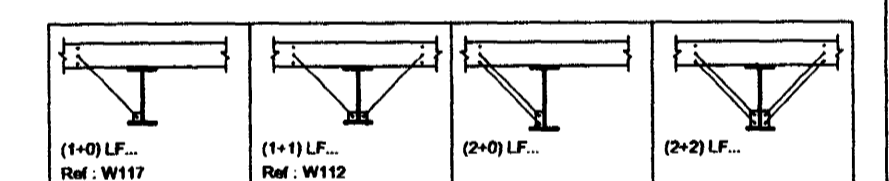
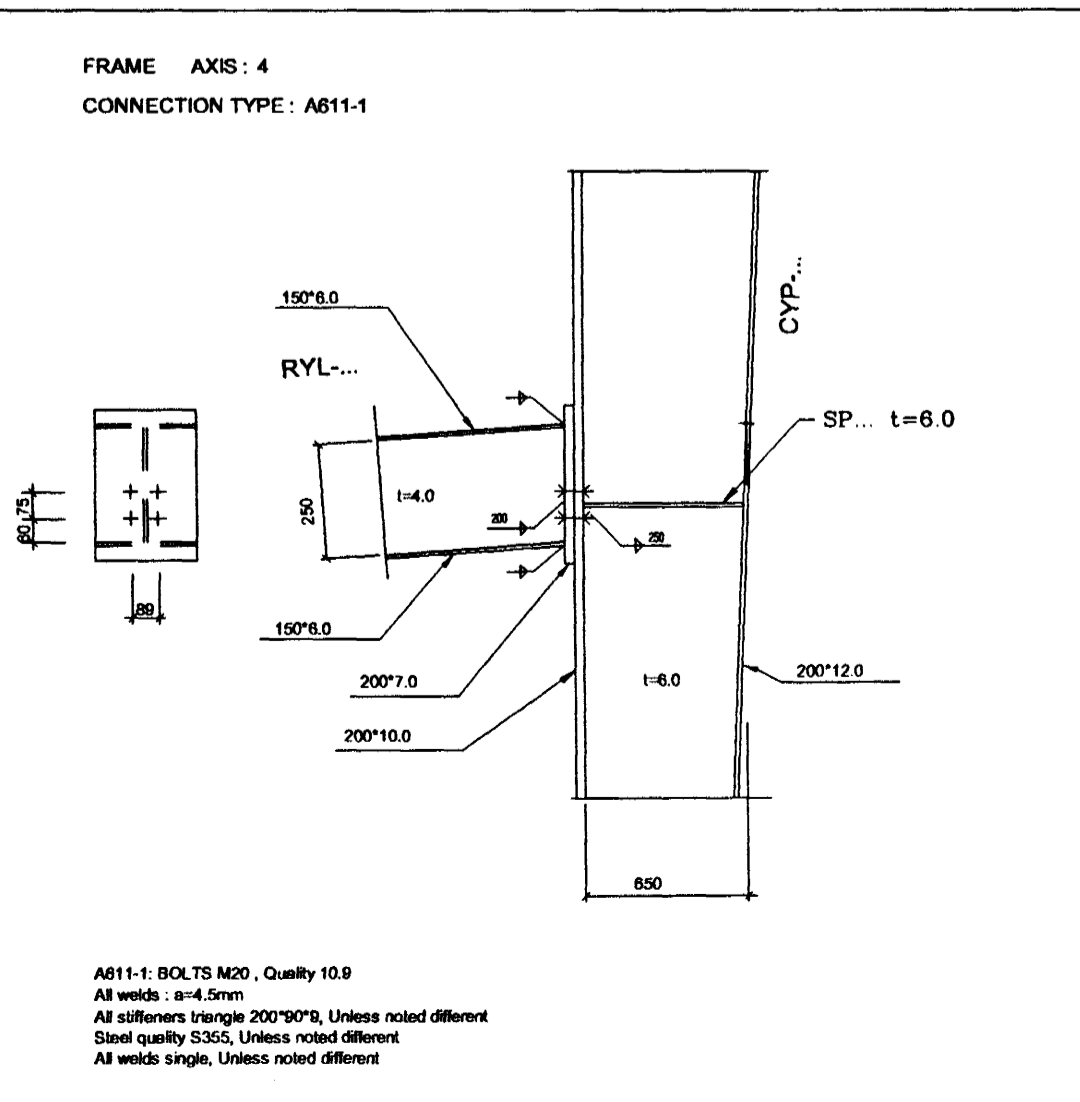
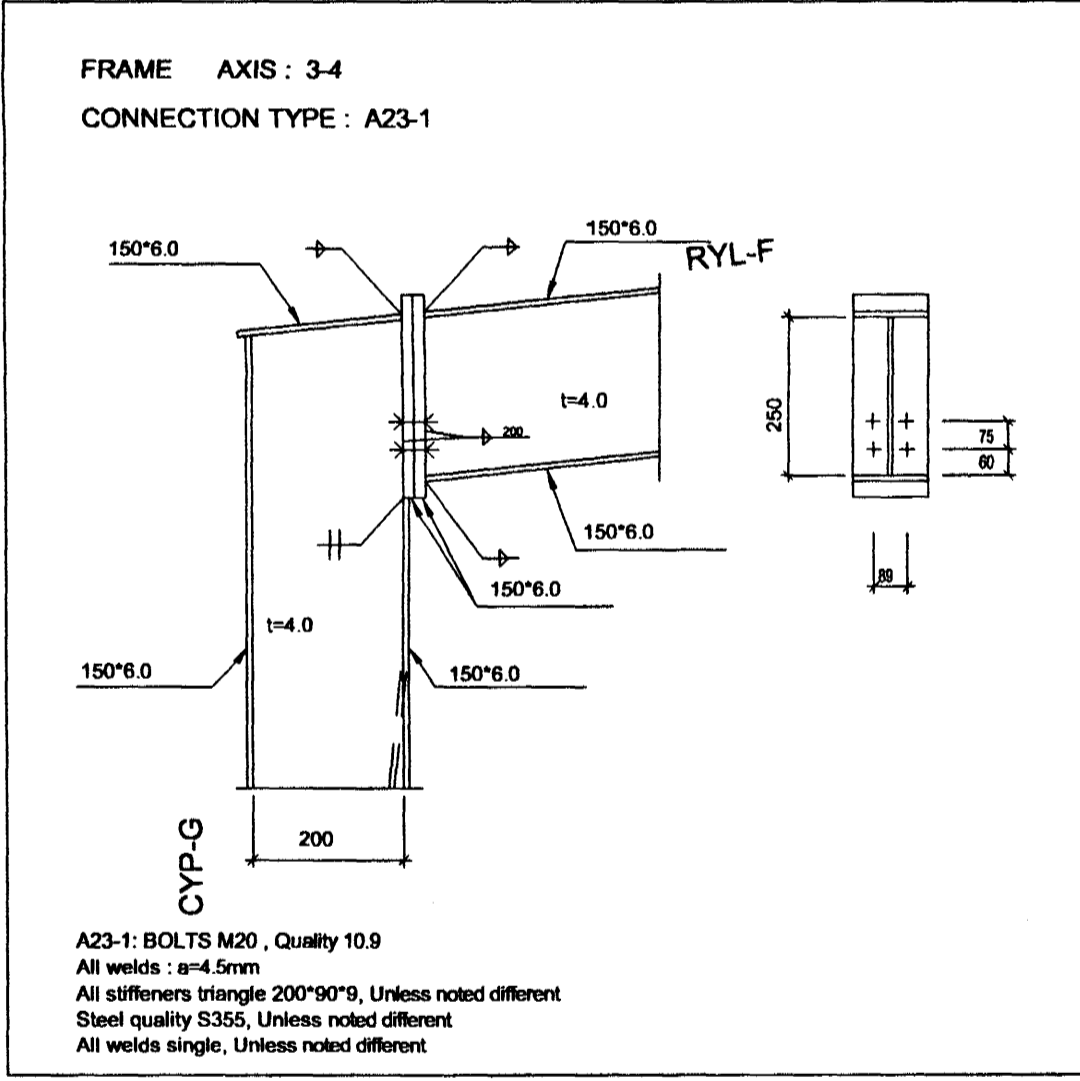
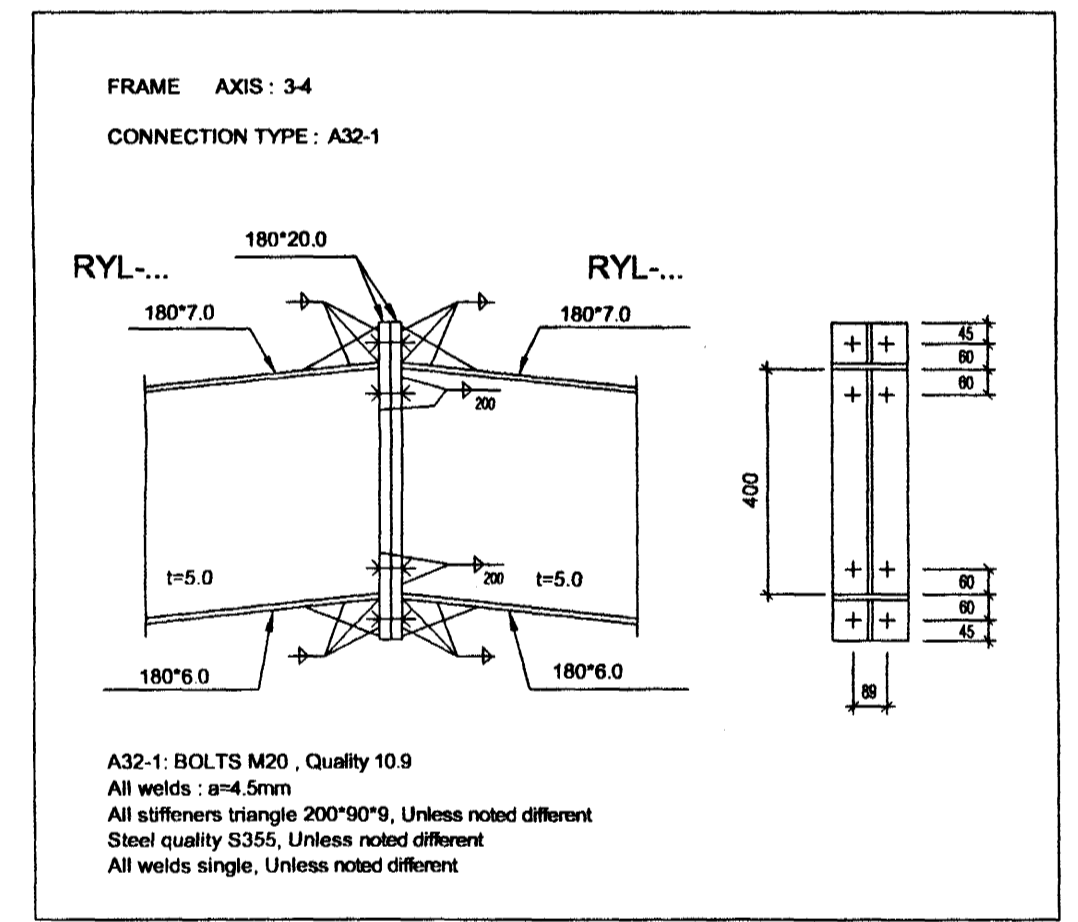
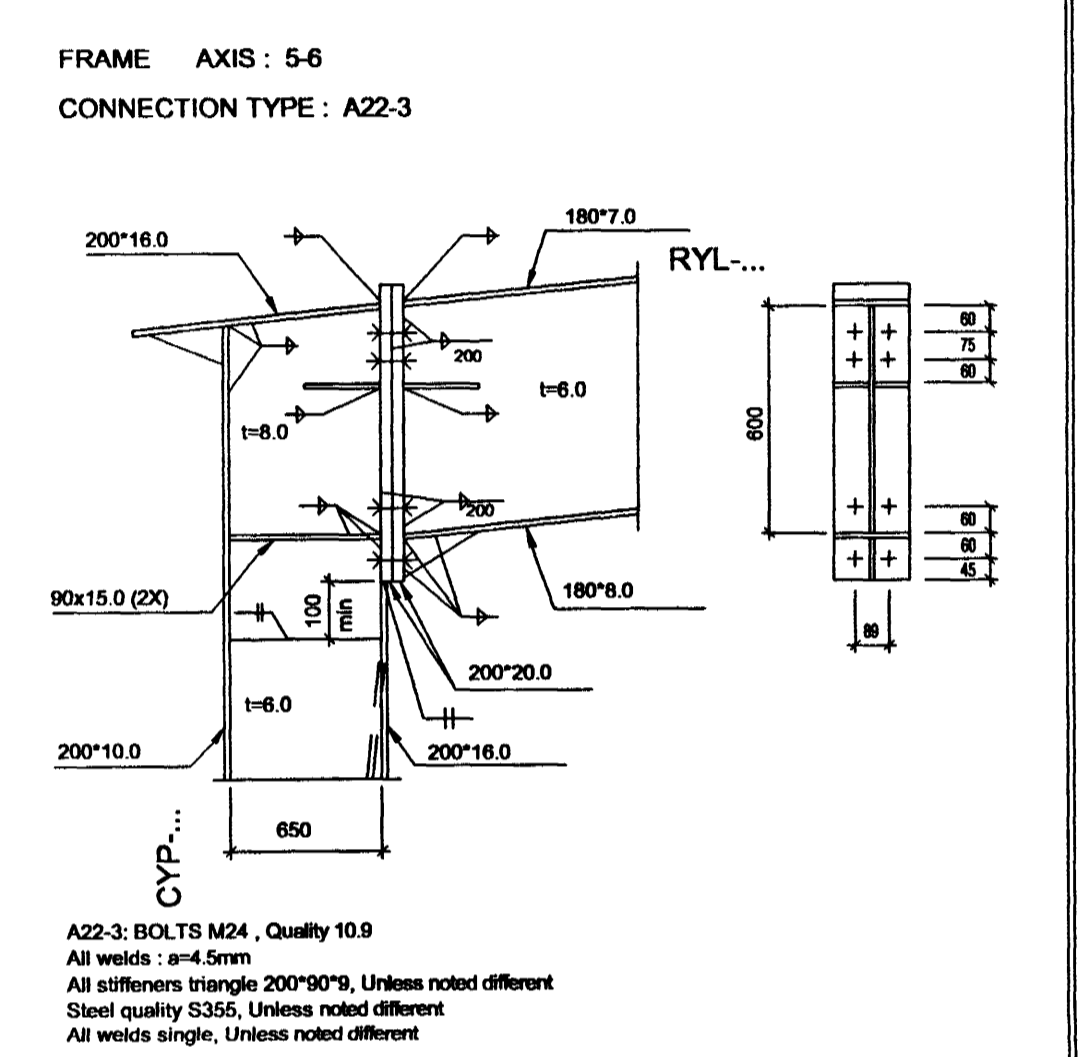
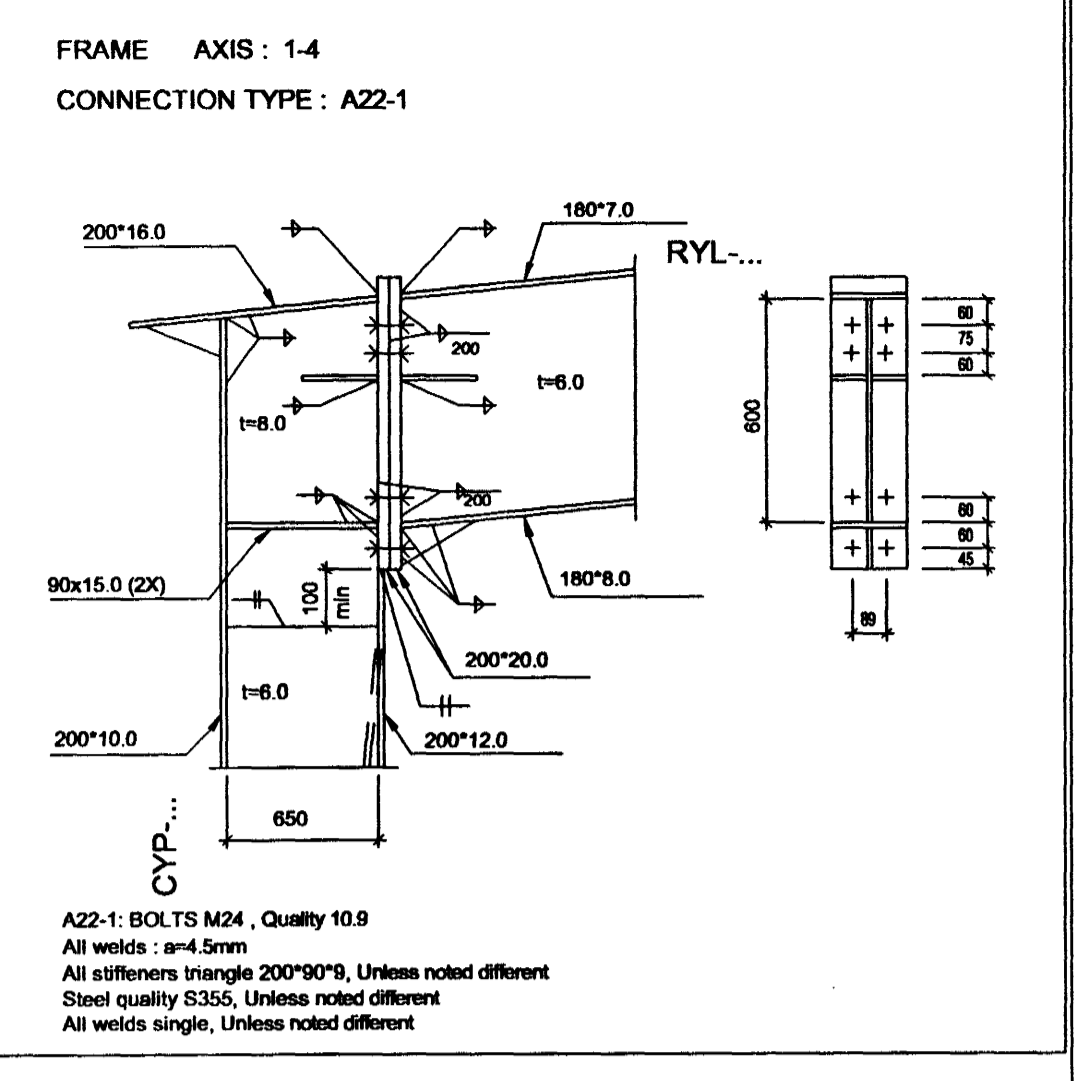
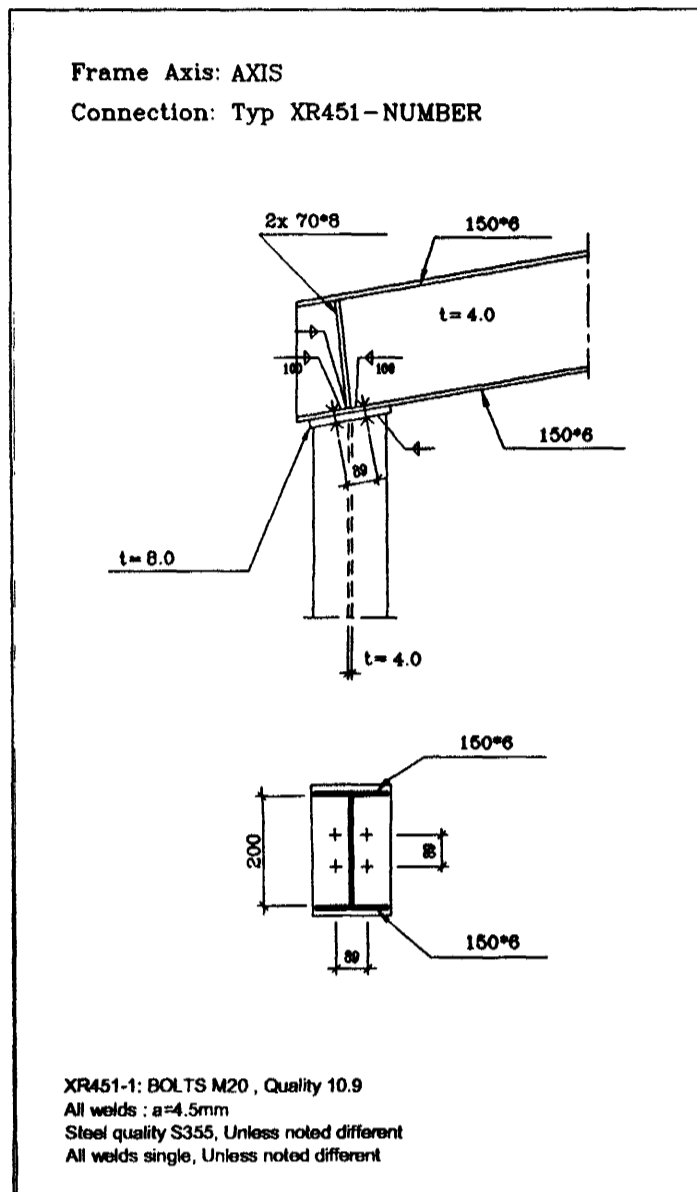
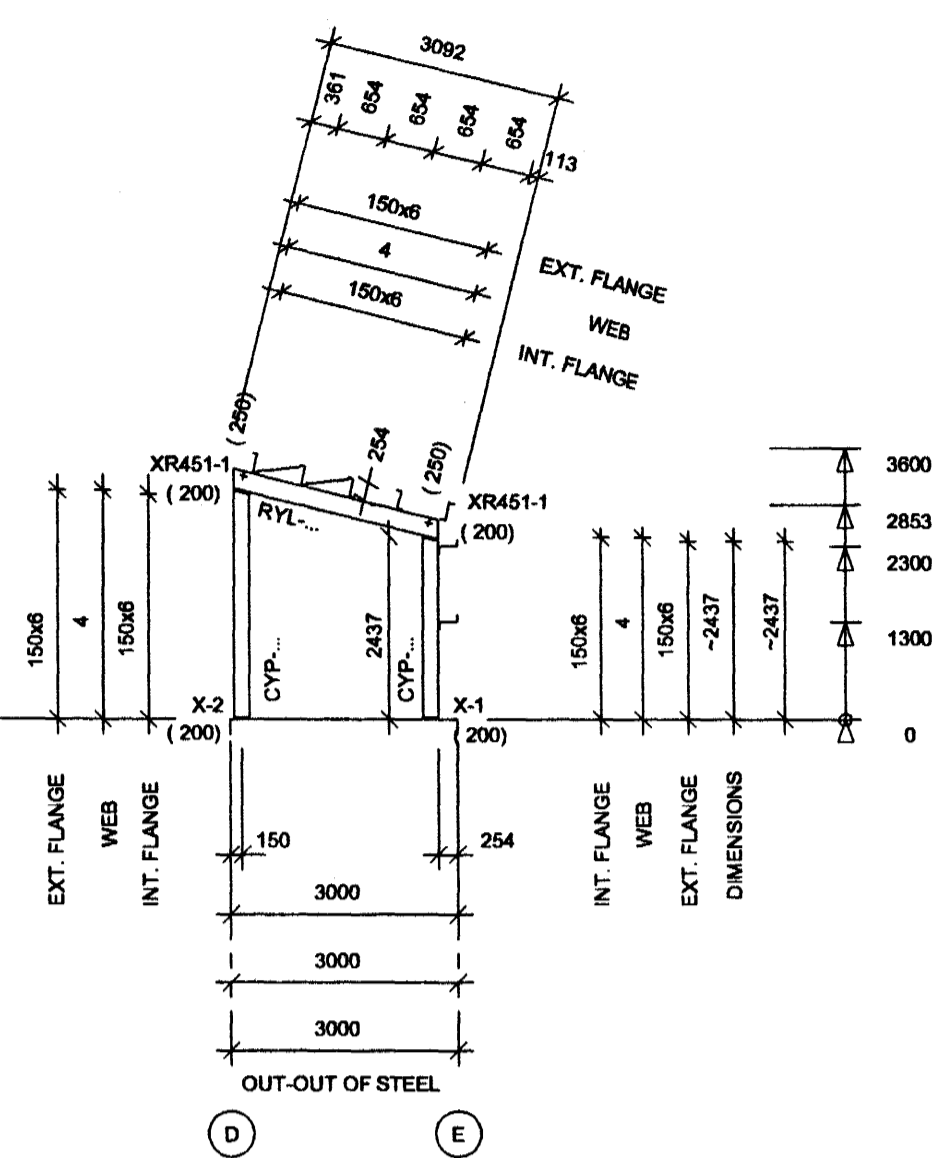
CONNECTION	BOLT	QTY
A22-1	BSK24075	0.4 - 2.2
A22-2	BSK20095	0.2 - 2.0
A32-1	BSK20075	2.2 - 2.2
A611-1	BSK20055	0.2 - 2.0
BSK = DIN 6914 / 24075 = M 24 x 75		



HV BOLTS:

MoS2 lubricate and prestress as follows

- M20 mit 450 Nm
- M24 mit 800 Nm



STD PROFILES DESCRIPTION LIST	NSTD PROFILES DESCRIPTION LIST
LF - FLANGE BRACING 50°50°3.2	

- TECHNICAL NOTES**
1. Drawings to read in conjunction with ASTRON technical manual
 2. All measures in millimeters
 3. = Field adapted
 4. Design of foundations by local engineer
 5. Applicable column reactions see chart "Foundation Reactions"
 6. Purlin spacings are rounded to mm and cannot be added
 7. Flange bracings installation per standard detail W1 chapter
 8. Field locate roof openings and accessories
 9. Compensation of panel tolerance currently during installation
 10. Unless noted differently:
 - 1) Purlin diaphragms - At peak (see W316, W326, W327)
 - Double purlins (see W311, W321)
 - 2) Wind bracing details, see chapter W2
 - 3) Roof stabilisation if necessary
 - Purlin spacers (HSA, HSB, HSC, HSD. SEE W37 AND W38)
 - Sag rods (RSG...) see W6 and cross section
 - Tie straps (HC 250) see W7 chapter
 11. Field cut and adapt girts and panels shown in overlap with an accessory element

K. Rafnsson Tækniþjónusta
Klapparstíg 20 • 101 Reykjavík
Kt. 220650-2189

This design is the property of ASTRON BUILDINGS, a Division of Parker Hannifin.
Copying and manufacturing components according to these drawings or calculations is illegal.

20 NOV. 2002

DET: A121 A22 A32 A611 W112 W117 XA111	17.04.02 Stalex (email)
	25.04.02 Stalex, Samuelsen
	25.04.02 Stalex, Erection
TRANSMITTALS	
PROJ: Berghella MHL-2 - Hafnarfjörður Ísland	BID: Stalex
BUILDING: AZM1 24.9% SPAN:17.000m EH:6.400m L:58.50m ALT:	CRANE: 60kN
LOADS: LL/WL/AdL: 100/160/20 (Da/N/m2)	
NORMS: PRIM. IST SEC. DS	MEMOL - 11h33
FRAME SECTION AXIS 4-6 RAMMAR-LÍNUR 4-6	
REV. A: additional purlin axis 3	DATE: 06/04/02
REV. B: cross section axis 3' added, detail added, wing unit changed	25.06.2002 J. Steyer
REV. C: Purlin in canopy reversed, Flange thickness axis 4, Stiffener for crane axis 4	ENG.: W. Altmann
DRAF: K. Olsson	
ASTRON BUILDINGS S.A. - P.O. Box 152 - L-9202 DIEKIRCH-LUXEMBOURG - Tel: +352 80 29 11 - Fax: +352 80 34 66	