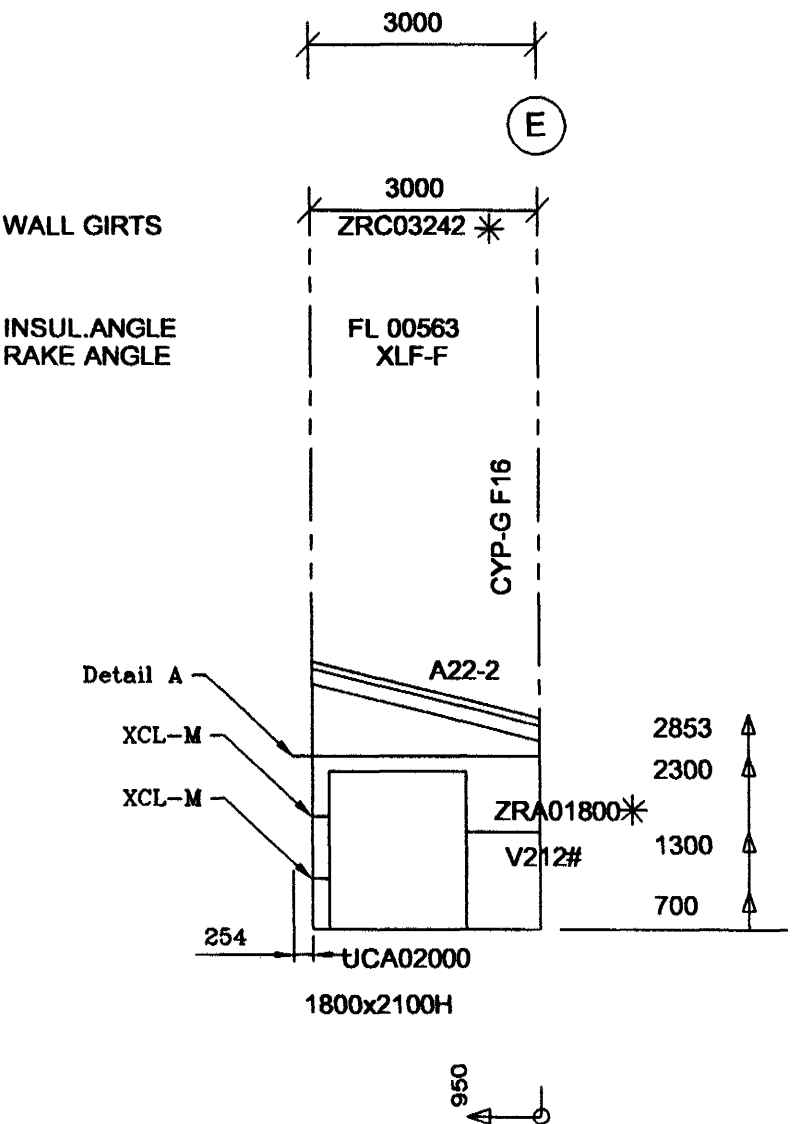
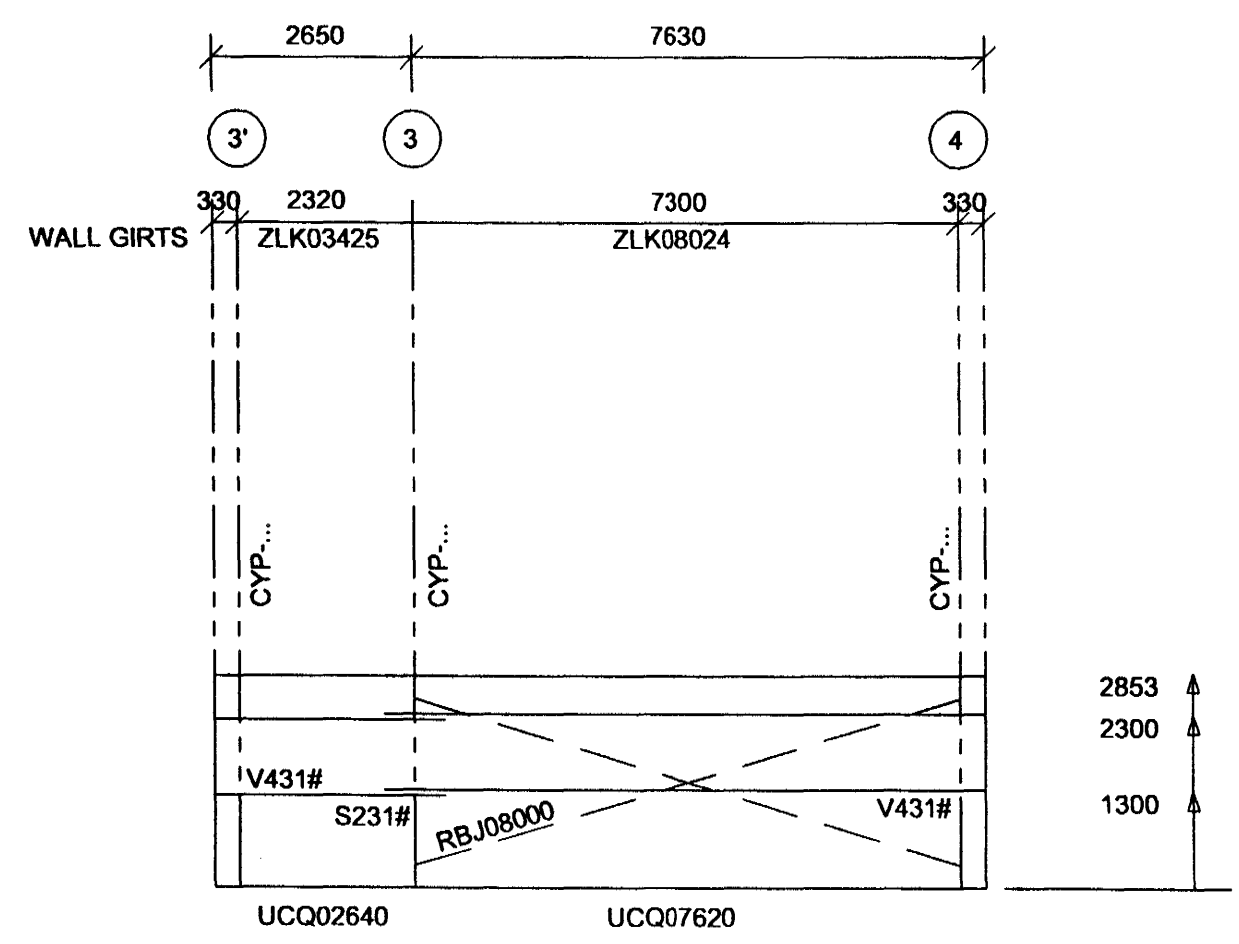


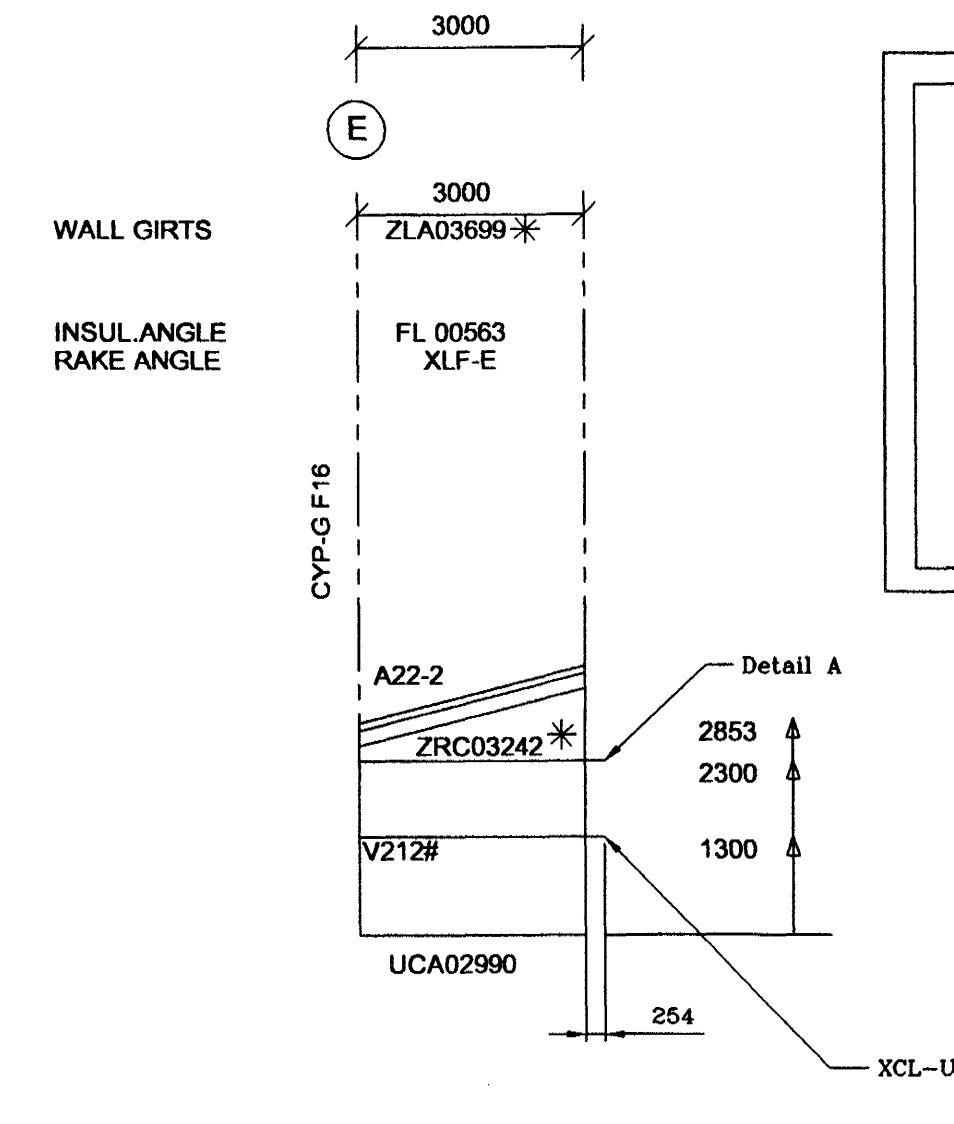
In case of strong wind, doors have to be kept closed!



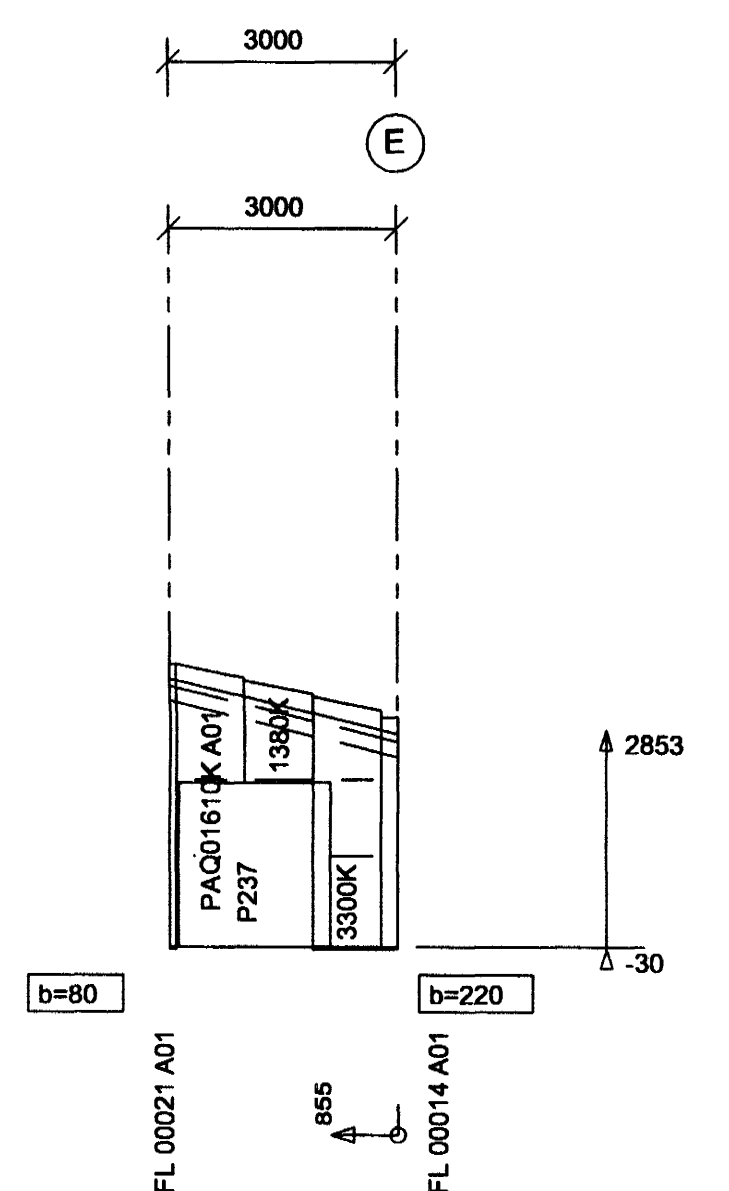
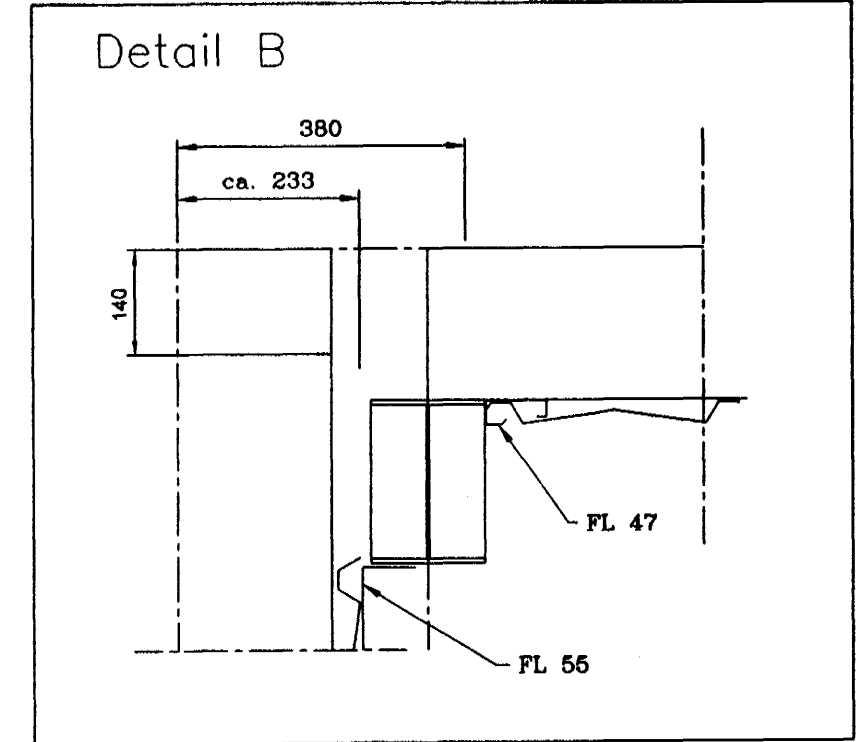
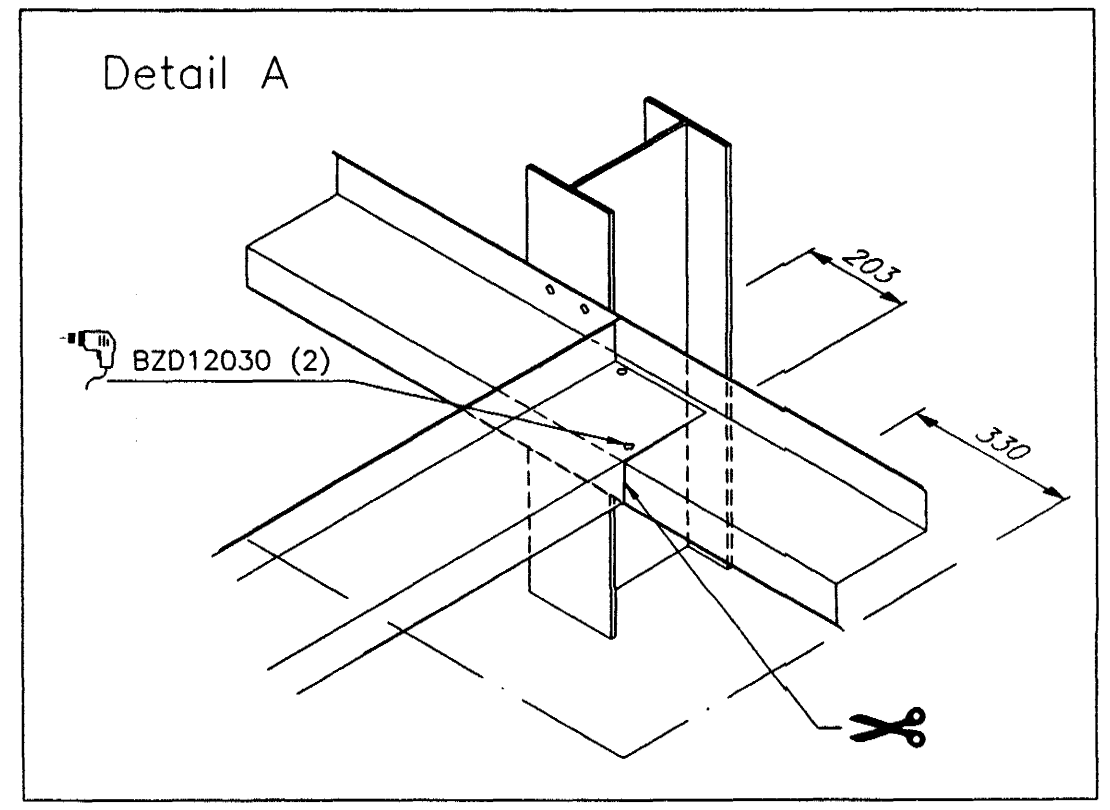
ENDWALL AXIS 3
(SCALE:1/100)



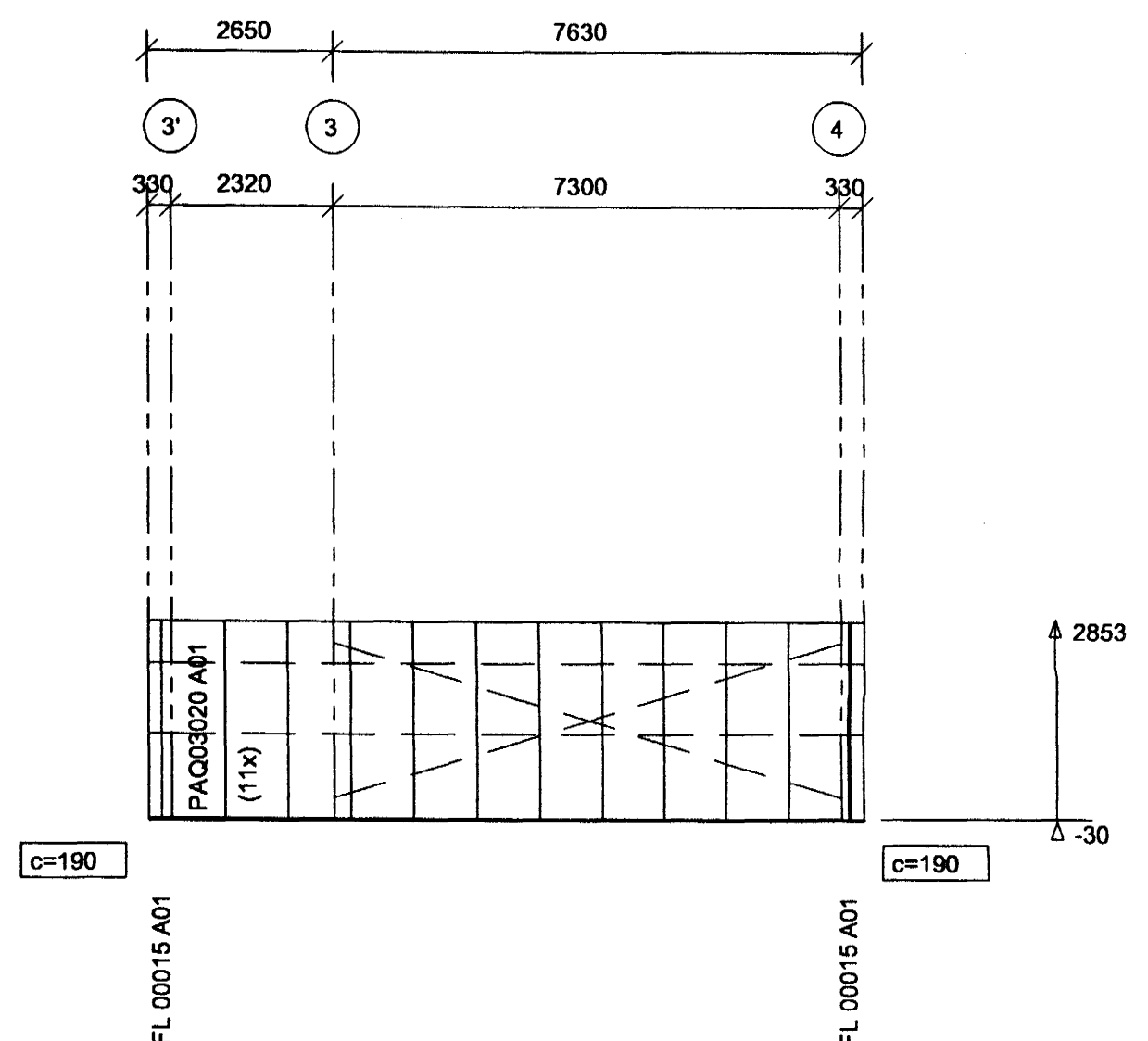
SIDEWALL AXIS - FRAMING
(SCALE:1/100)



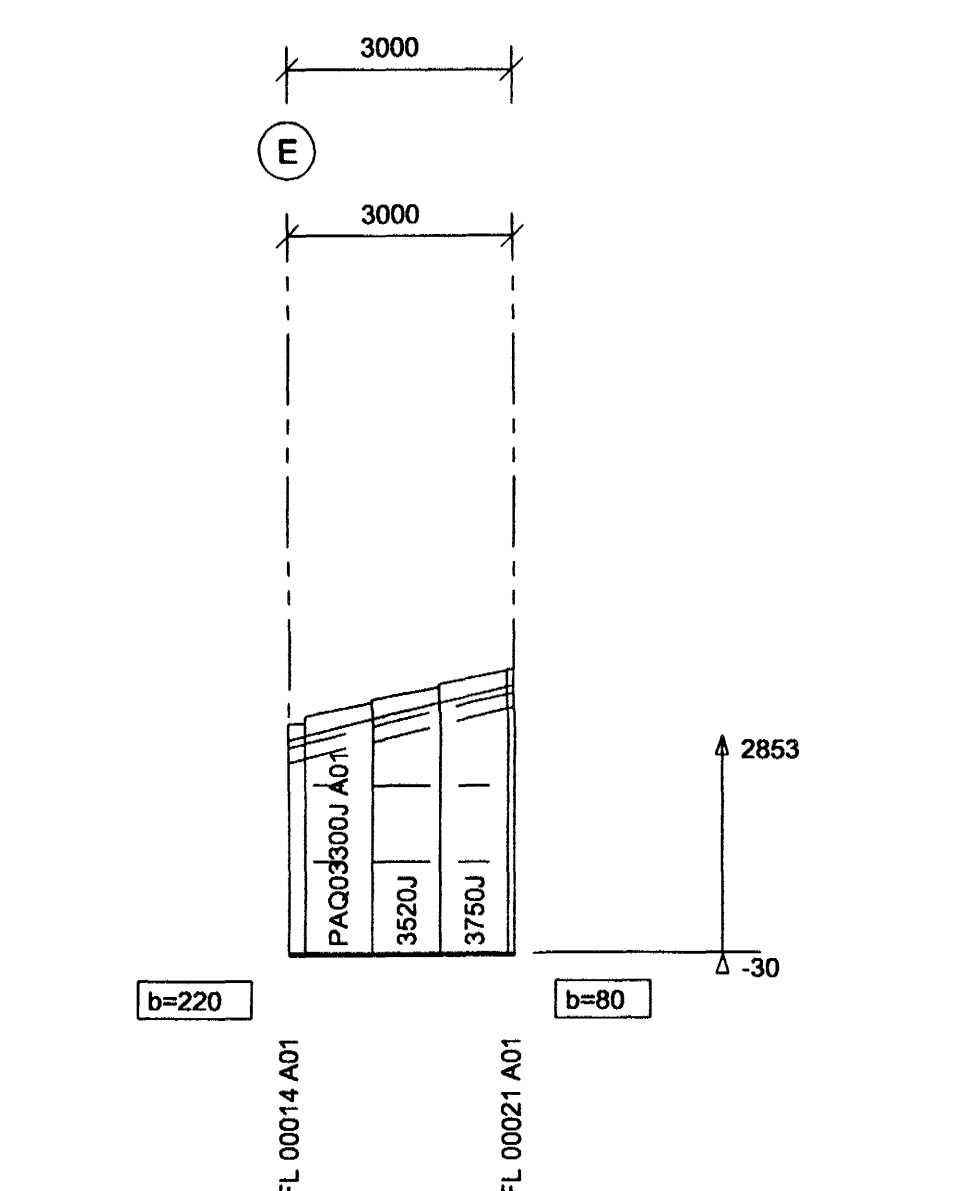
ENDWALL AXIS 4
(SCALE:1/100)



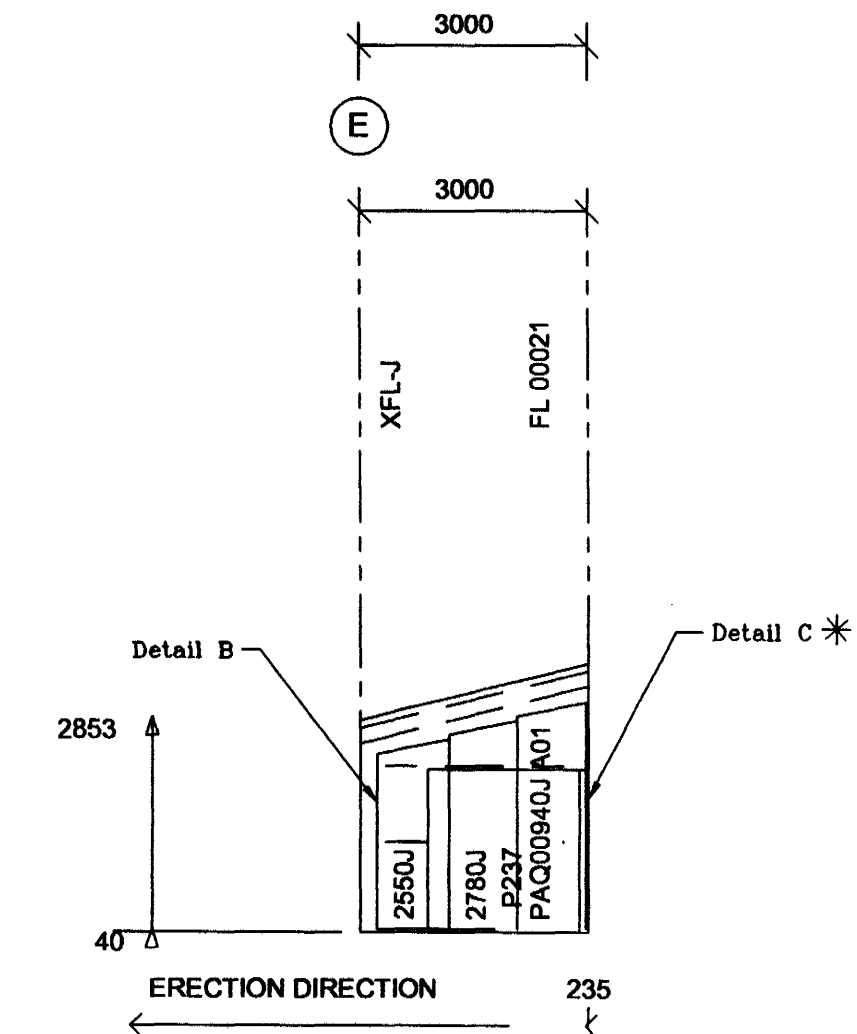
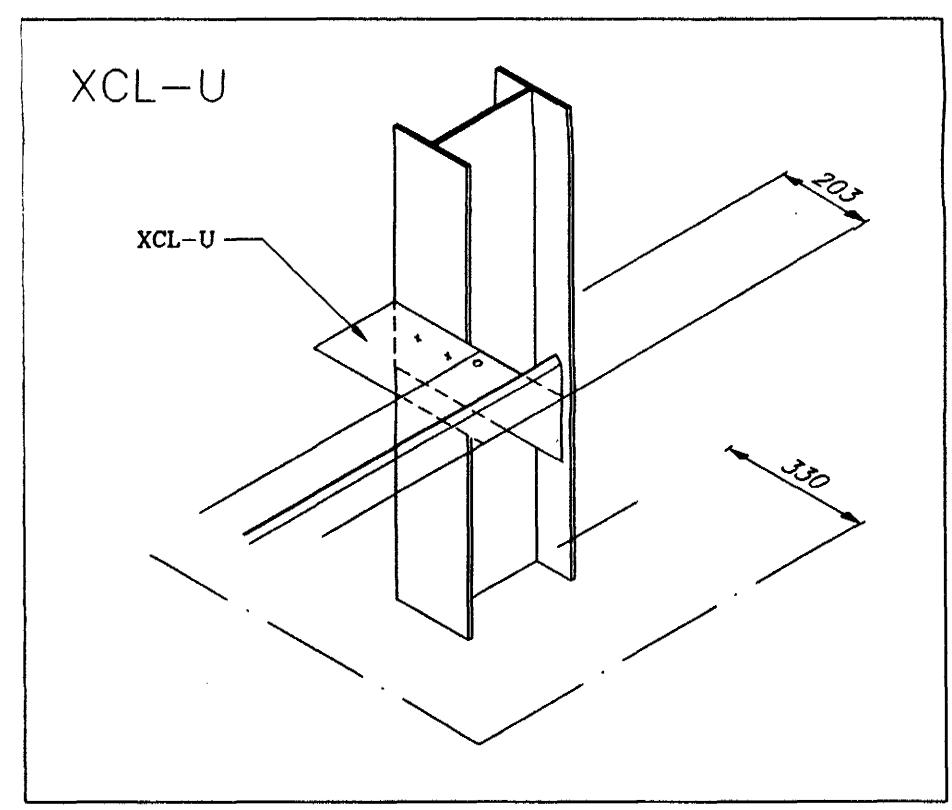
ENDWALL AXIS 3
(SCALE:1/100)



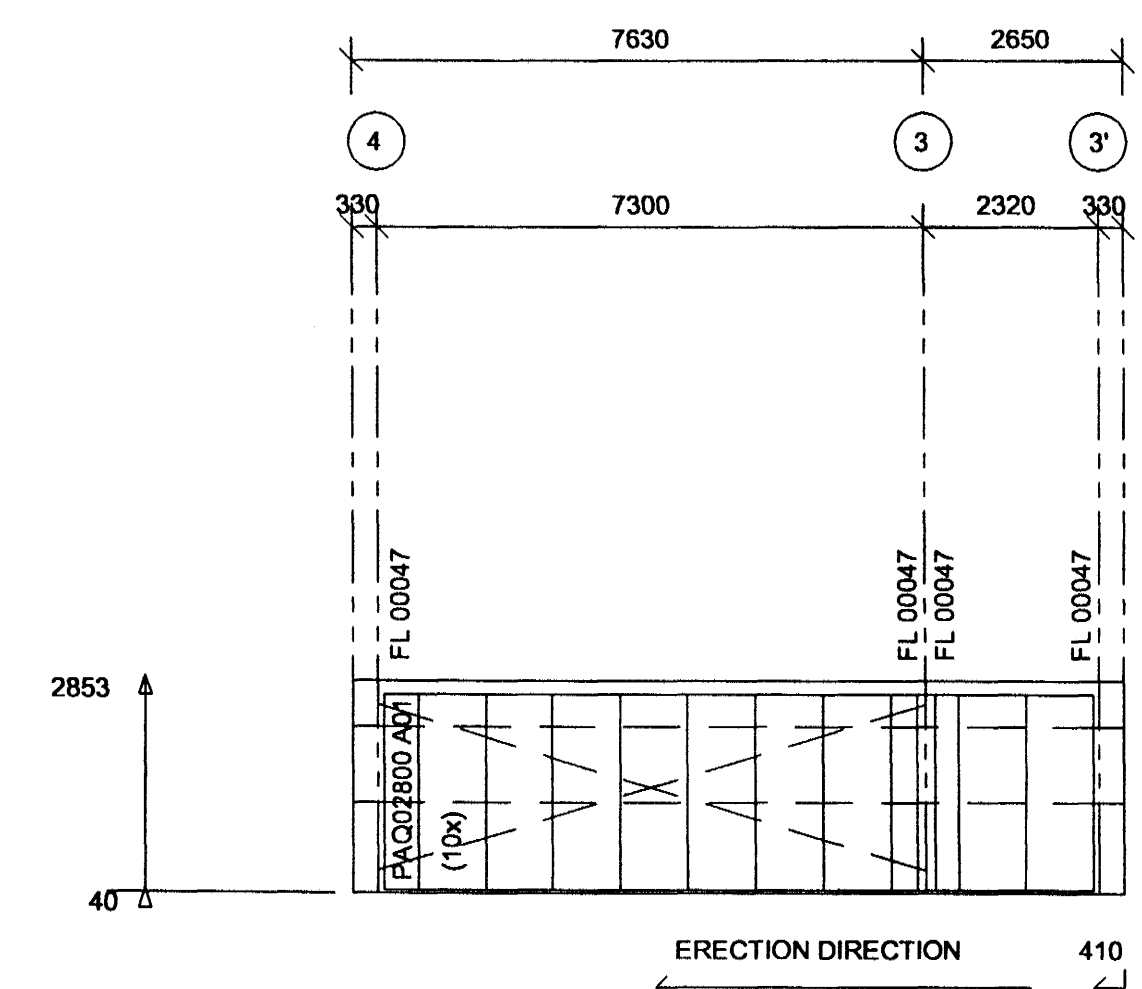
SIDEWALL AXIS - SHEETING
(SCALE:1/100)



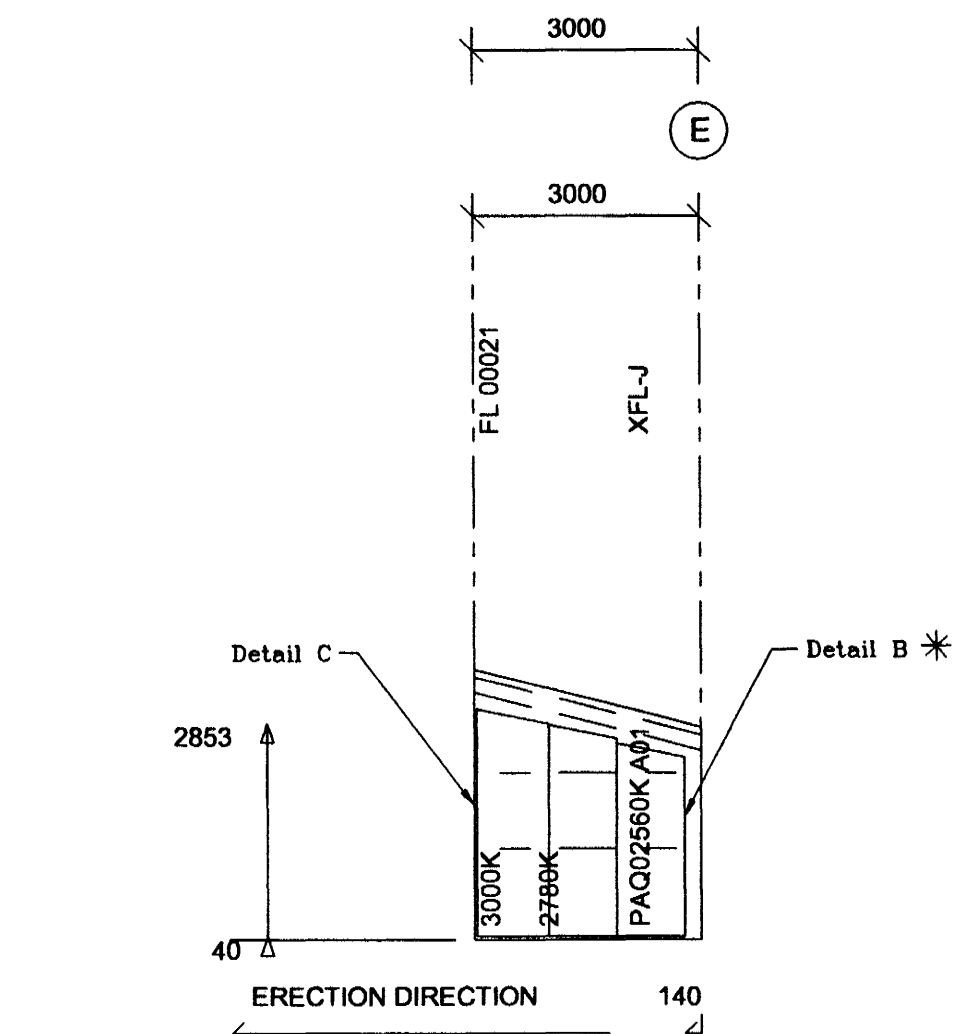
ENDWALL AXIS 4
(SCALE:1/100)



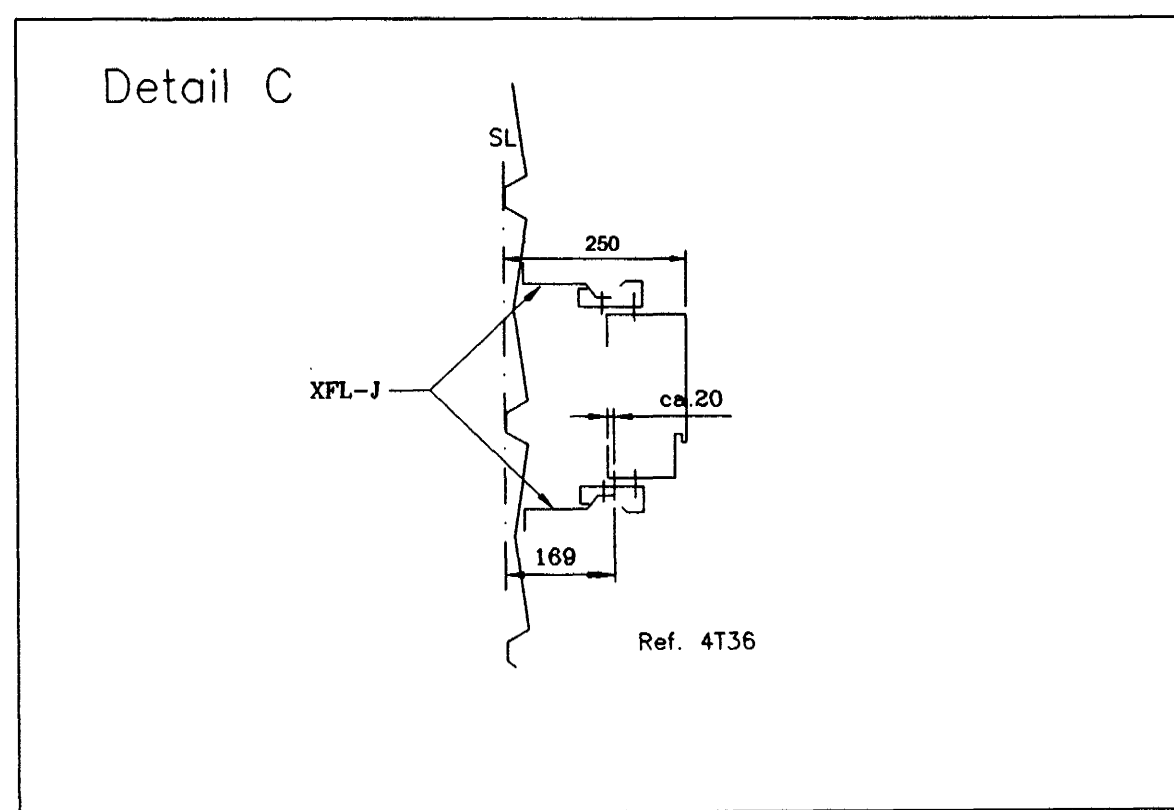
ENDWALL AXIS 3
(SCALE:1/100)



SIDEWALL AXIS - INSIDE SHEETING
(SCALE:1/100)



ENDWALL AXIS 4
(SCALE:1/100)



K.Rafnsson Tæknibjónusta
Klapparstíg 20 • 101 Reykjavík
Kt. 220650-2189

STD PROFILES DESCRIPTION LIST	NSTD PROFILES DESCRIPTION LIST
FL - Flashing RB: TIE ROD DIAM 24 UCA: SILL CHANNEL 203*81*1.95 UCQ: SILL CHANNEL 254*77*1.95 ZRK: ZEE SIMPLE SPAN 254*2.67 ZSA: ZEE SIMPLE SPAN 203*1.52 ZSC: ZEE SIMPLE SPAN 203*1.91	XLF : RAKE ANGLE 50°50'2

- TECHNICAL NOTES
- Drawings to read in conjunction with ASTRON technical manual
 - All measures in millimeters
 - * = Field adapted
 - Design of foundations by local engineer
 - Applicable column reactions see chart "Foundation Reactions"
 - Purlin spacings are rounded to mm and cannot be added
 - Flange bracings installation per standard detail W1 chapter
 - Field locate roof openings and accessories
 - Compensation of panel tolerance currently during installation
 - Unless noted differently:
 - Purlin diaphragms - At peak (see W316, W326, W327)
 - Double purlins (see W311, W321)
 - Wind bracing details, see chapter W2
 - Roof stabilisation if necessary:
 - Purlin spacers (HSA, HSB, HSC, HSD. SEE W37 AND W38)
 - Sag rods (RSG...) see W6 and cross section
 - Tie straps (HC 250) see W7 chapter
 - Field cut and adapt girts and panels shown in overlap with an accessory element

This design is the property of ASTRON BUILDINGS, a Division of Parker Hannifin. Copying and manufacturing components according to these drawings or calculations is illegal.

DET:	1x	47.04.02	Stalex (email)									
41100	41199	41200	41201	41225	4136	5141	A22	K280	1x	25.04.02	Stalex, email	
K281	K282	K283	K284	K285	S344	S910	S916	S917	S918	4x	25.04.02	Stalex, email
S919	S931	S932	S933	S934	V***	V212	V217	W211	W212	2x²	25.04.02	Stalex, Erection
W221	W222	W241										

TRANSMITTALS

PROJ: Berghella MHL 2 - Hafnarfjörður Ísland B/D: Stalex

BUILDING: AZM1 24.9% SPAN:17.000m EH:6.400m L:58.50m ALT:

LOADS: LL/MJA:100/180/20 (Da/Nm²) CRANE: 60kN

NORMS: PRIM IST SEC. DS MENOL - 11x33

108560

WU-1

DATE: 05/04/02

ENG.: W. Altmann

DRAF: K. Olsson

ASTRON WING UNIT FRAMING AND SHEETING HLIDARBYGGING

REV. A: PA-panels inside sheeting

REV. B: wing unit changed 25.06.2002 J. Speer

REV. C: Wall girts, panel lengths, corner flashings, door position

ASTRON BUILDINGS S.A. - P.O. Box 152 - L-9202 DIEKRICH-LUXEMBOURG - Tel: +352 80 29 11 - Fax: +352 80 34 66