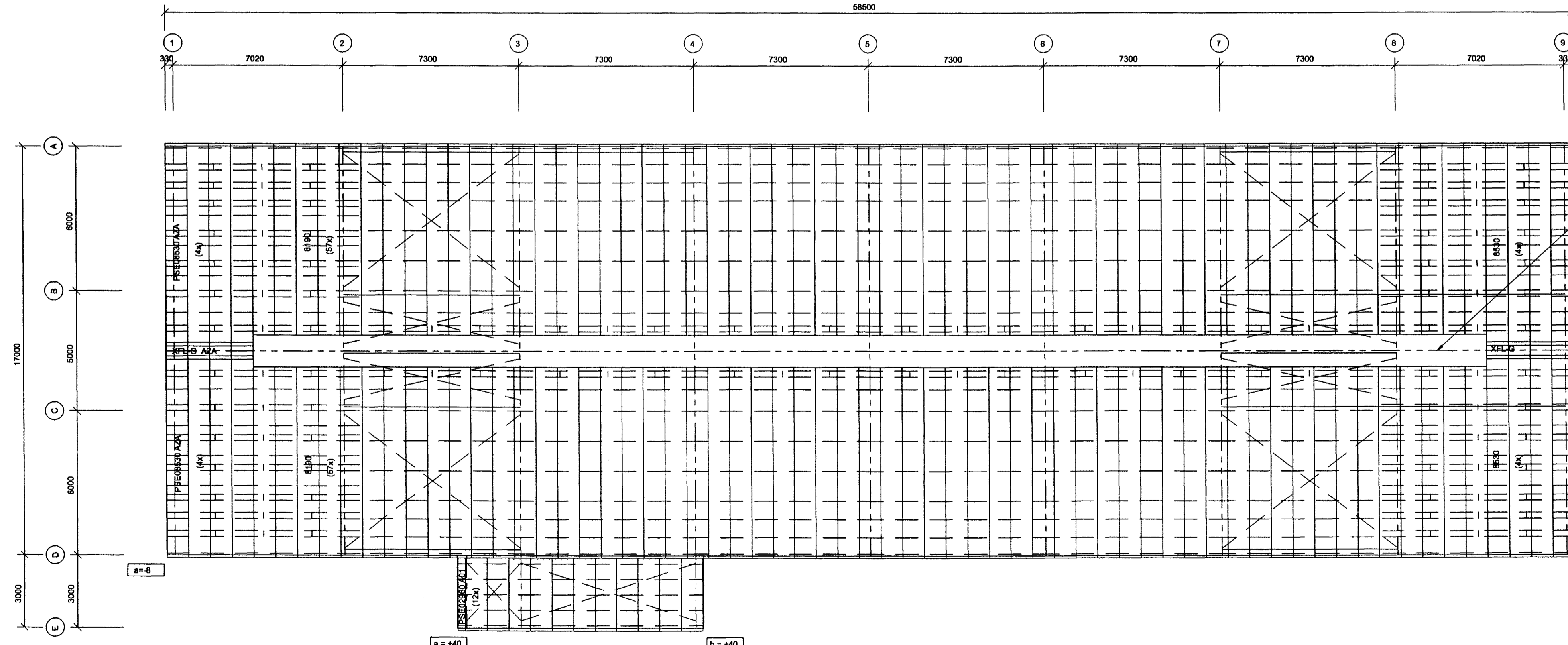
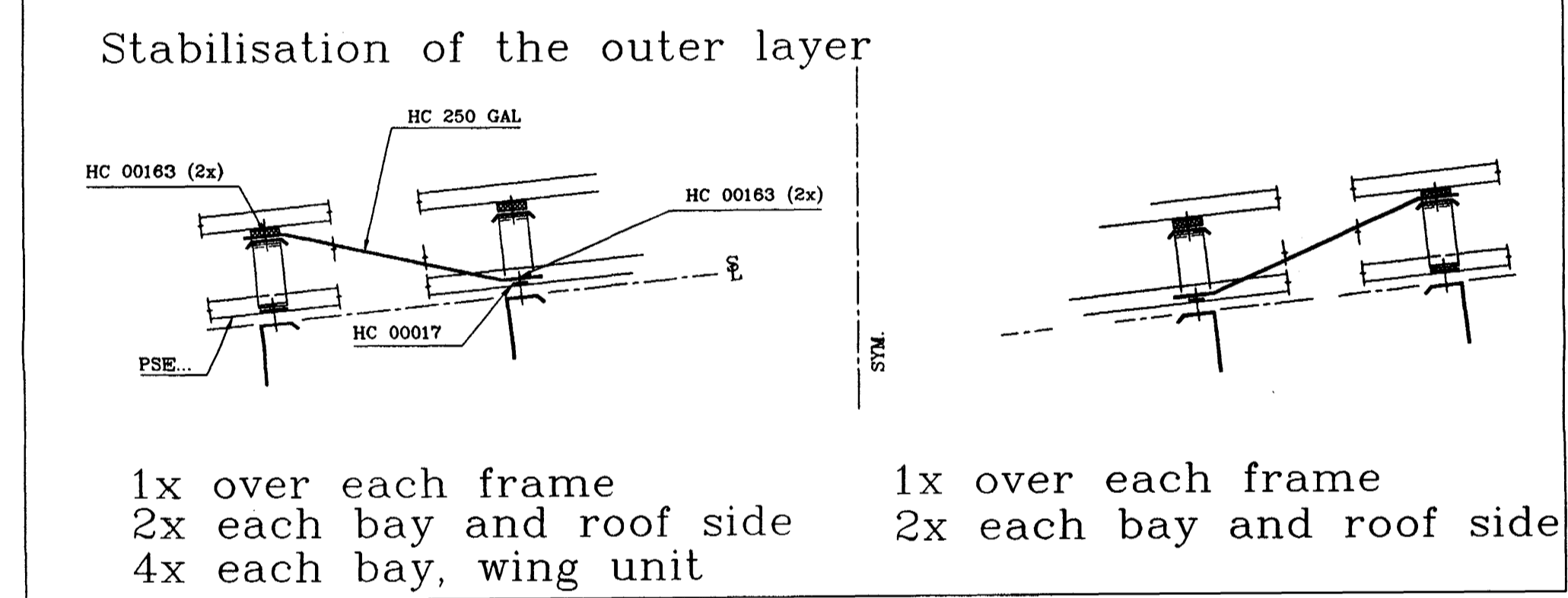


ROOF INSULATION  
(SCALE: 1/125)

Non standard pieces for PR 24,93%				
Teile Nr.	Finish/Dicke	Bezeichnung	Referenz	
XGE-A	B01	Exterior gutter	GE 10/11	
XFL-A	B01	Gutter trim	FL273	
XFL-L XFL-R	B01	Gutter end closure left Gutter end closure right	FL 286 L FL 286 R	
XFY-A	B01	Peak final	FY 486	
FY-130L FY-130R	***	Outs corner closure left Outs corner closure right	FY 130 L FY 130 R	
XCL-E	GAL	Peak dia.	CL 22	
XFL-F XFL-G	AZA	Ridge cap Inside ridge cap	FL 00002 FL 00546	



DOUBLE SKIN ROOF (LOWER SKIN)  
(SCALE: 1/125)

K.Rafnsson Tæknibjónusta  
Klappartíg 20 • 101 Reykjavík  
Kt. 220850-2189

*K. Rafnsson*

RAA SB

**TECHNICAL NOTES**

- Drawings to read in conjunction with ASTRON technical manual
- All measures in millimeters
- \* = Field adapted
- Design of foundations by local engineer
- Applicable column reactions see chart "Foundation Reactions"
- Purlin spacings are rounded to mm and cannot be added
- Flange bracings installation per standard detail W1 chapter
- Field locate roof openings and accessories
- Compensation of panel tolerances currently during installation
- Unless noted differently:
  - Purlin diaphragms - At peak (see W316, W326, W327)
    - Double purlins (see W311, W321)
  - Wind bracing details, see chapter W2
  - Roof stabilisation if necessary:
    - Purlin spacers (HSA, HSB, HSC, HSD. SEE W37 AND W38)
    - Sag rods (RSC...) see W6 and cross section
    - Tie straps (HC 250) see W7 chapter
- Field cut and adapt girts and panels shown in overlap with an accessory element

This design is the property of ASTRON BUILDINGS, a Division of Parker Hannifin. Copying and manufacturing components according to these drawings or calculations is illegal.

Byggingatillit, Félmiðgjafi  
Aðrirritið  
20 NOV 2002

DET: 5T19 J201 J203 XL201 XL202 XL203 XL204 XL205	1x 17.04.02 4x 25.04.02 2x* 25.04.02	Stalex (email) Stalex, Samulsson Stalex, Erection
TRANSMITTALS		
PROJ: Berghella MHL-2 - Hafnarfjörður Ísland	B/D: Stalex	
BUILDING: AZM1 24.9% SPAN: 17.000m EH: 6.400m L: 58.50m ALT:	CRANE: 60kN	108560
LOADS: LL/WL/AdL: 100/160/20 (Da/N/m <sup>2</sup> )		RF-2
NORMS: PRIM. IST SEC. DS MENOL - 11h33		DATE: 05/04/02 ENG.: W. Altmann DRAF: K. Olsson
<b>ROOF INSULATION AND LOWER SHEETING</b> PAKEINANGR.-NEDRI KL REV. A wing unit changed 25.06.2002 J. Speer REV. B: Panel lengths REV. C:		
ASTRON BUILDINGS S.A. - P.O. Box 152 - L-9202 DIEKIRCH-LUXEMBOURG - Tel: +352 80 29 11 - Fax: +352 80 34 86		