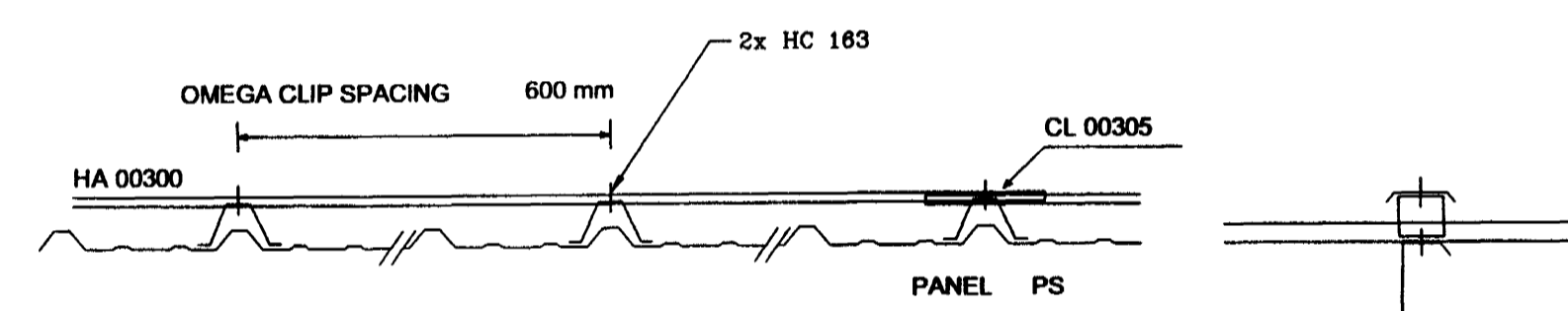


ROOF FRAMING
(SCALE: 1/125)

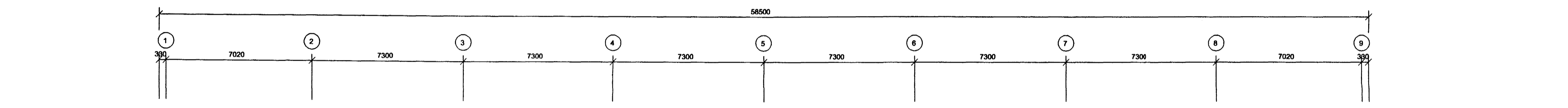
K. Rafnsson Tæknibjónusta
Klappartíg 20 • 101 Reykjavík
Kt. 22050-2189

K. Rafnsson

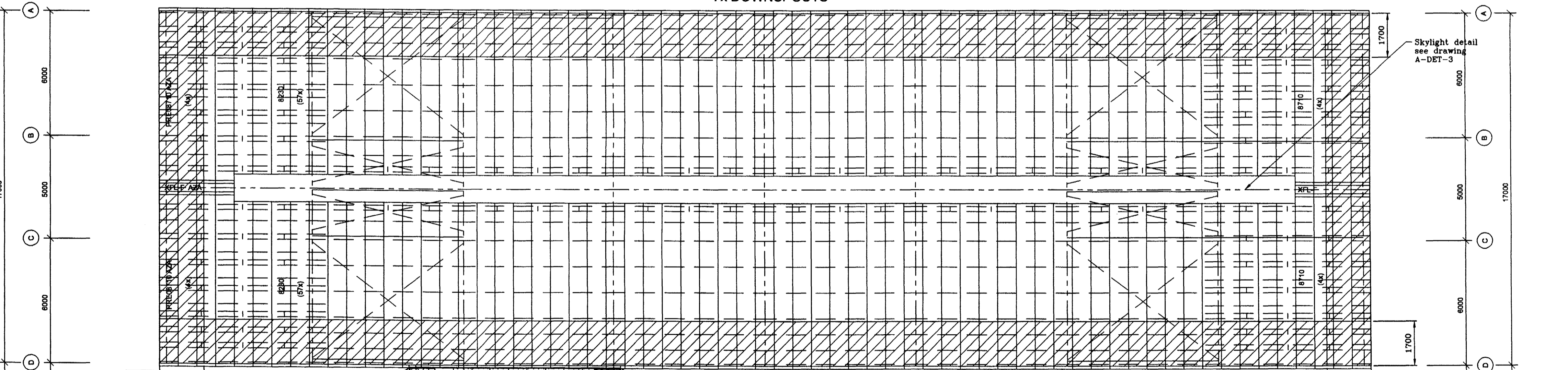


DOUBLE SKIN ROOF DETAIL

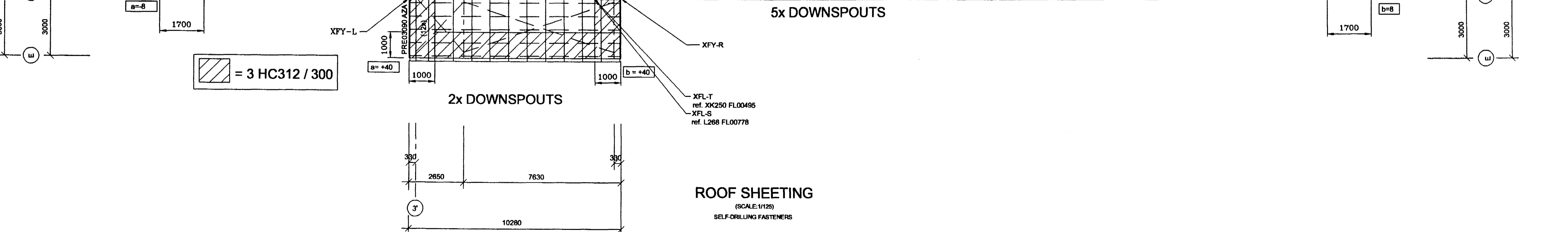
AA 80



7x DOWNSPOUTS



5x DOWNSPOUTS



2x DOWNSPOUTS

ROOF SHEETING
(SCALE: 1/125)
SELF-DRILLING FASTENERS

| STD PROFILES DESCRIPTION LIST | NSTD PROFILES DESCRIPTION LIST |
|---|---|
| RBH : TIE ROD DIAM 18 RBU : TIE ROD DIAM 24 RSG : SAG ROD M12 SBG : STRUT PIPE 152 * 3.2 ZLA : ZEE LAP COND. 203*1.52 ZLC : ZEE LAP COND. 203*1.91 ZLD : ZEE LAP COND. 203*2.21 ZLJ : ZEE LAP COND. 254*2.30 | XHE-A : EAVE RAIL XHE-B : EAVE RAIL XHE-C : EAVE RAIL |

- TECHNICAL NOTES**
- Drawings to read in conjunction with ASTRON technical manual
 - All measures in millimeters
 - = Field adapted
 - Design of foundations by local engineer
 - Applicable column reactions see chart "Foundation Reactions"
 - Purlin spacings are rounded to mm and cannot be added
 - Flange bracings installation per standard detail W1 chapter
 - Field locate roof openings and accessories
 - Compensation of panel tolerance currently during installation
 - Unless noted differently:
 - Purlin diaphragms - At peak (see W316, W326, W327)
 - Double purlins (see W311, W321)
 - Wind bracing details, see chapter W2
 - Roof stabilisation if necessary:
 - Purlin spacers (HSA, HSB, HSC, HSD, SEE W37 AND W38)
 - Sag rods (RSG,...) see W6 and cross section
 - Tie straps (HC 250) see W7 chapter
 - Field cut and adapt girts and panels shown in overlap with an accessory element

This design is the property of ASTRON BUILDINGS, a Division of Parker Hannifin. Copying and manufacturing components according to these drawings or calculations is illegal.

| DET: | DATE: | BY: |
|--|-------------|-------------------|
| S111 S128 S211 S223 S228 S416 S516 S711 S723 S728 | 1x 17.04.02 | Stalex (email) |
| S731 S736 U136 U418 W211 W212 W221 W222 W311 W316 | 4x 25.04.02 | Stalex, Samuelsen |
| W612 W622 | 2x 25.04.02 | Stalex, Erection |
| 4T100 XK201 XK202 XK203 XK204 XK205 XK206 XK207 XK250 K252 | | |
| K252 | | |

PRQJ: Berghella MHL-2 - Hafnarjardur Island B/D: Stalex
BUILDING: AZM1 24.9% SPAN: 17.000m EH: 6.400m L: 58.50m ALT: 108560
LOADS: LL/WL/AxL: 100/160/20 (DaNm2) CRANE: 60kN
NORMS: PRIM. IST SEC. DS MENCL: 11k33
DATE: 05.04.02
ENG: W. Almann
DRAF: K. Olsson

ASTRON
ROOF FRAMING AND SHEETING
PAKVIRKI-KLÆÐNINGAR

REV. A: wing unit changed, strut pipes added 25.06.2002 J. Speer
REV. B.: Connection, Purlin lengths, XHE
REV. C.

ASTRON BUILDINGS S.A. - P.O. Box 152 - L-9202 DIEKIRCH-LUXEMBOURG - Tel: +352 80 29 11 - Fax: +352 80 34 66