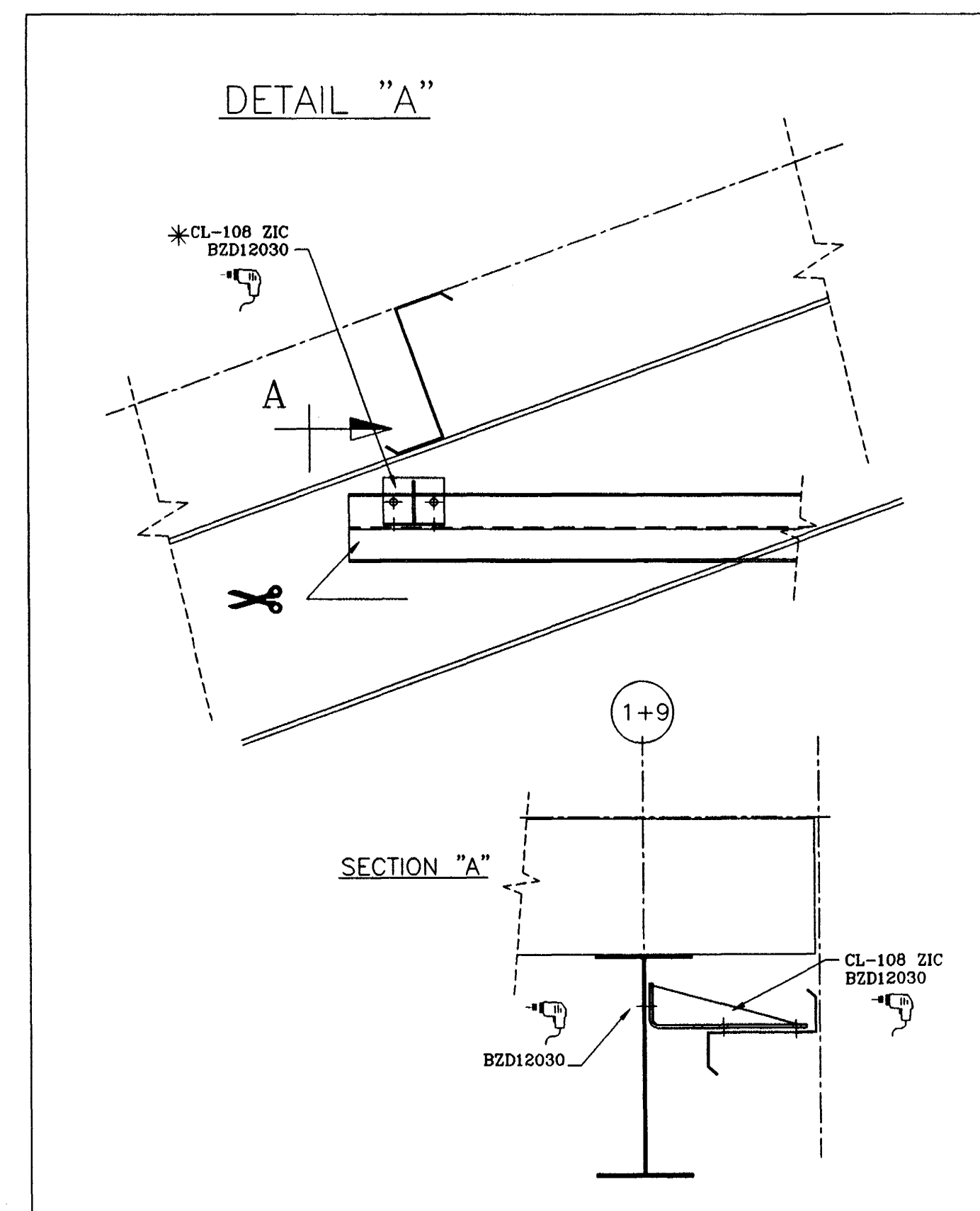
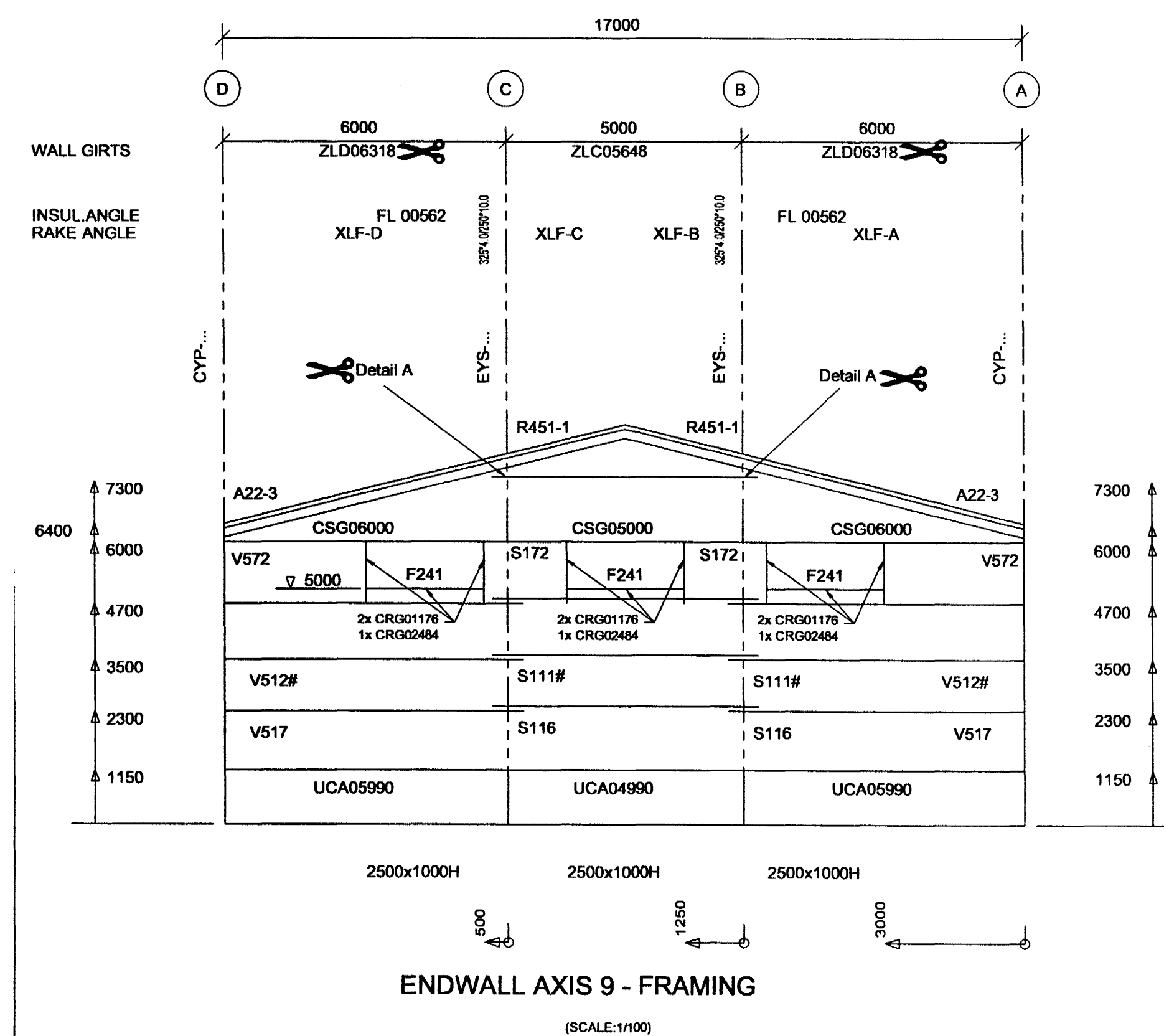


In case of strong wind, doors have to be kept closed!



K. Rafnsson Tæknipjónusta  
Klappargstíg 20 • 101 Reykjavík  
Kt. 220850-2189

STD PROFILES DESCRIPTION LIST	NSTD PROFILES DESCRIPTION LIST
UCA: SILL CHANNEL 203*81*1.95 ZLD: ZEE LAP COND. 203*2.21 ZLC: ZEE LAP COND. 203*1.9	EYS: ENDWALL COLUMN XLF: RAKE ANGLE 50°50'2"

- TECHNICAL NOTES**
- Drawings to read in conjunction with ASTRON technical manual
  - All measures in millimeters
  - \* = Field adapted
  - Design of foundations by local engineer
  - Applicable column reactions see chart "Foundation Reactions"
  - Purlin spacings are rounded to mm and cannot be added
  - Flange bracings installation per standard detail W1 chapter
  - Field locate roof openings and accessories
  - Compensation of panel tolerance currently during installation
  - Unless noted differently:
    - Purlin diaphragms - At peak (see W316, W326, W327)
      - Double purlins (see W311, W321)
    - Wind bracing details, see chapter W2
    - Roof stabilisation if necessary:
      - Purlin spacers (HSA, HSB, HSC, SEE W37 AND W38)
      - Sag rods (RSG,...) see W6 and cross section
      - Tie straps (HC 250) see W7 chapter
  - Field cut and adapt girts and panels shown in overlap with an accessory element

This design is the property of ASTRON BUILDINGS, a Division of Parker Hannifin.  
Copying and manufacturing components according to these drawings or calculations is illegal.

Byggingatillití Hjálparáttar  
2 0 NOV. 2008

DET:	4T199	4T198	4T20	4T201	4T223	4T225	4T35	5T41	A22	1x	17.04.02	Stalax (email)
K280	K281	K282	K283	R451	S111	S116	S910	S916	S917	4x	25.04.02	Stalax, Samúelsson
S918	S919	S931	S932	S933	S934	V511	V516	W211	W212	2x*	25.04.02	Stalax, Erection
W221	W222	W241										

**TRANSMITTALS**

PROJ:	Berghella MHL-2 - Hæfnarþjófur Ísland	B/D:	Stalax
BUILDING:	AZM 24.9% SPAN:17.000m EH:5.400m L:58.50m ALT:		
LOADS:	LL/M/Ad: 100/180/20 (Da/N/m2)	CRANE:	60kN
NORMS:	PRIM. IST	SEC. DS	MENOL-11h33

**108560**  
**EW-1**

DATE: 05/04/02  
ENG.: W. Almarr  
DRAF: K. Olsson

**ASTRON**  
ASTRON BUILDINGS S.A. - P.O. Box 152 - L-9202 DIEKRICH-LUXEMBOURG - Tel: +352 80 29 11 - Fax: +352 80 34 66