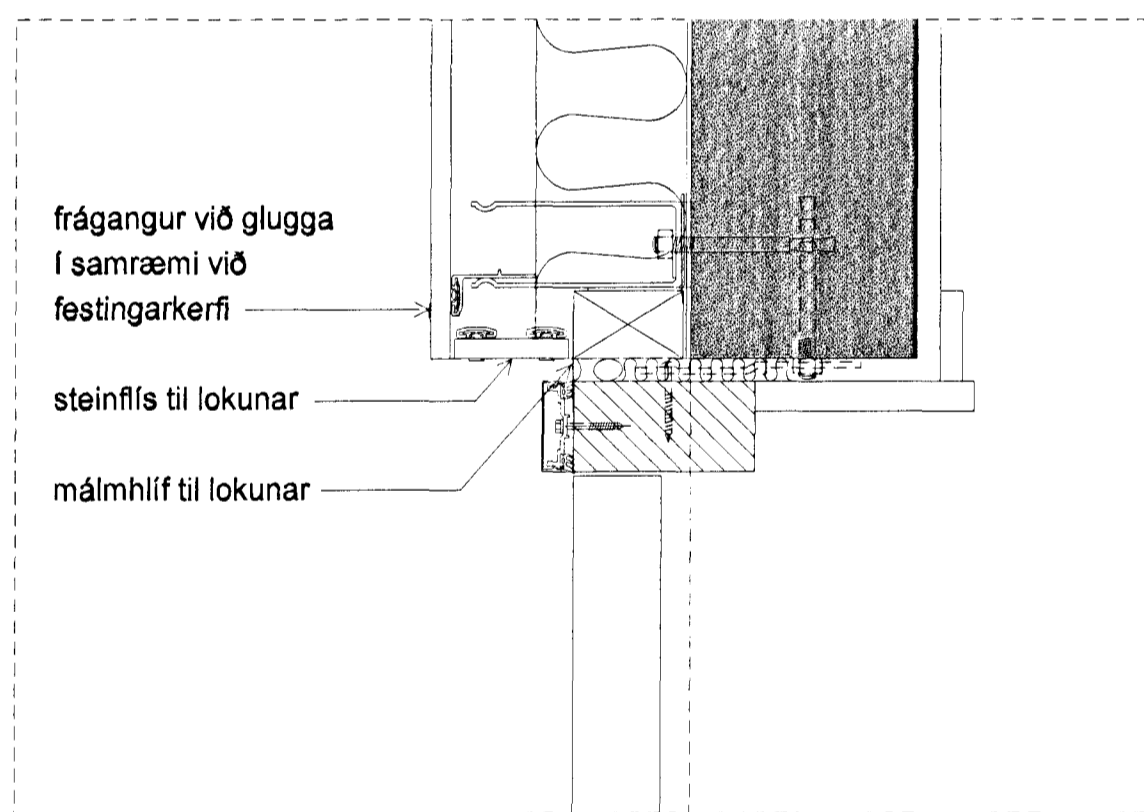
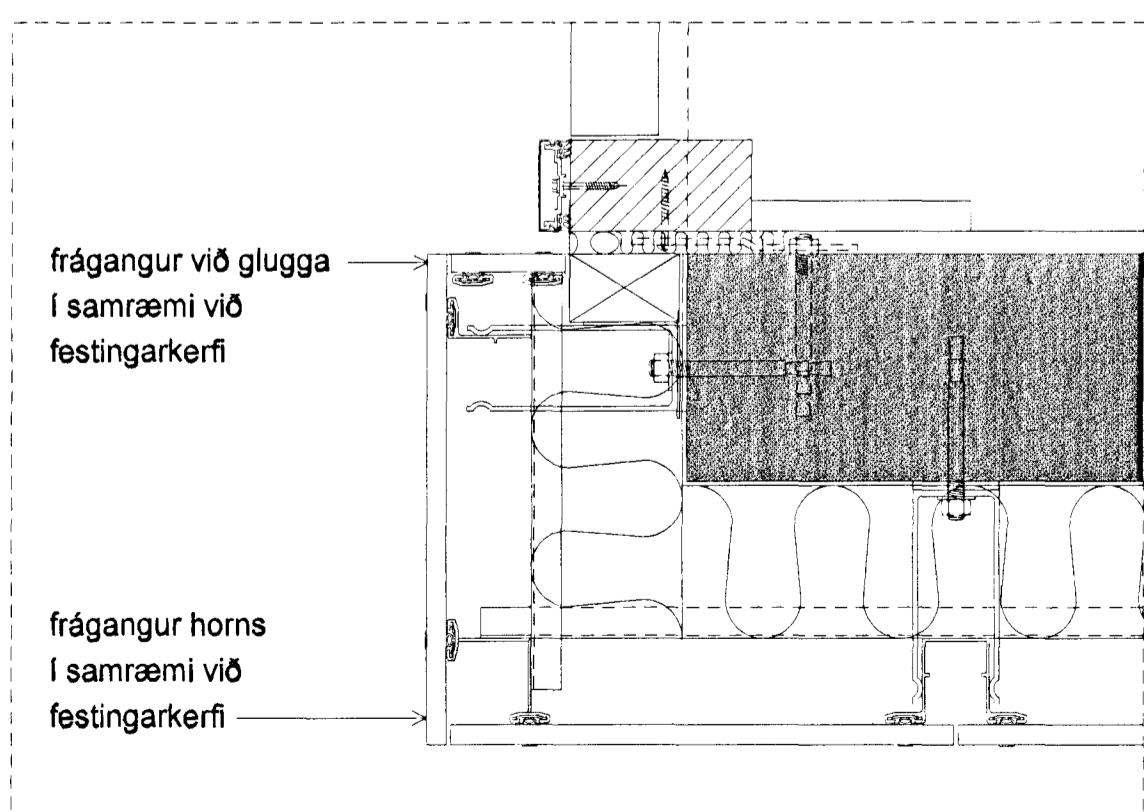


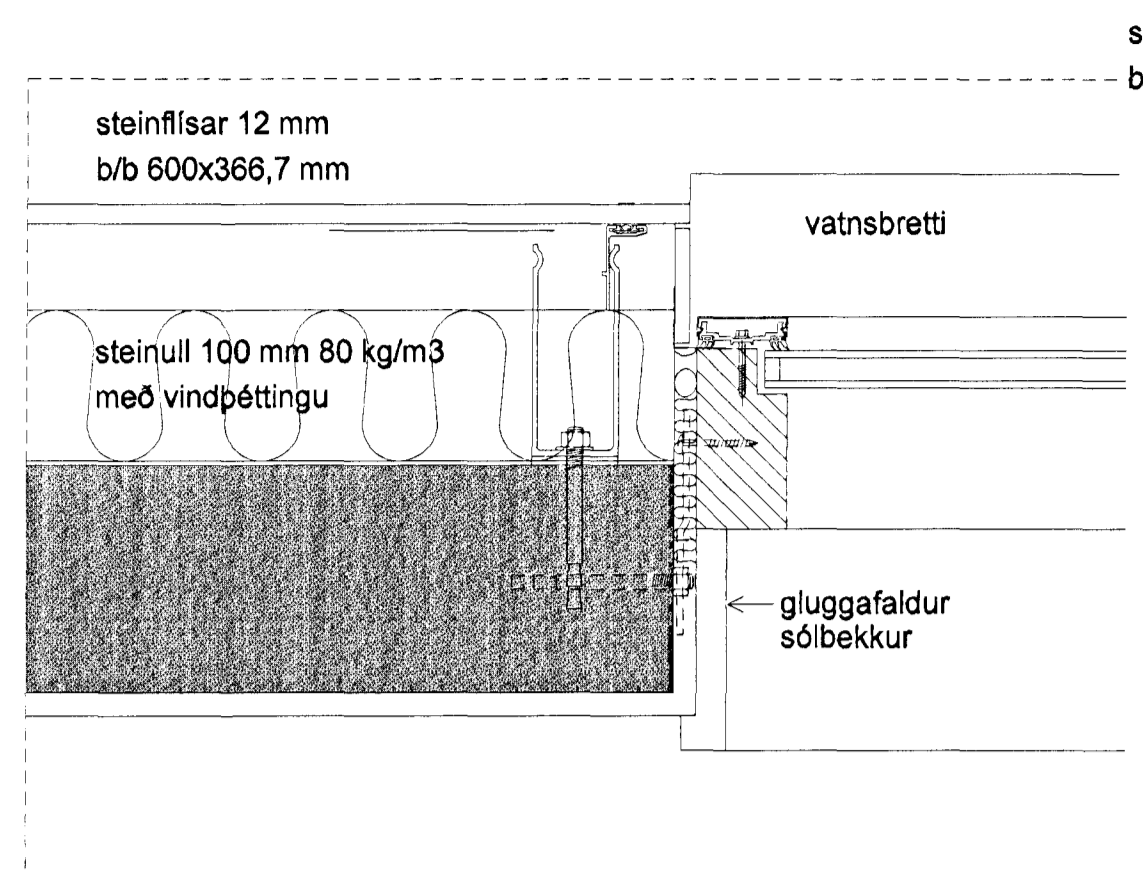
lárétt deili 401 A á úthorni



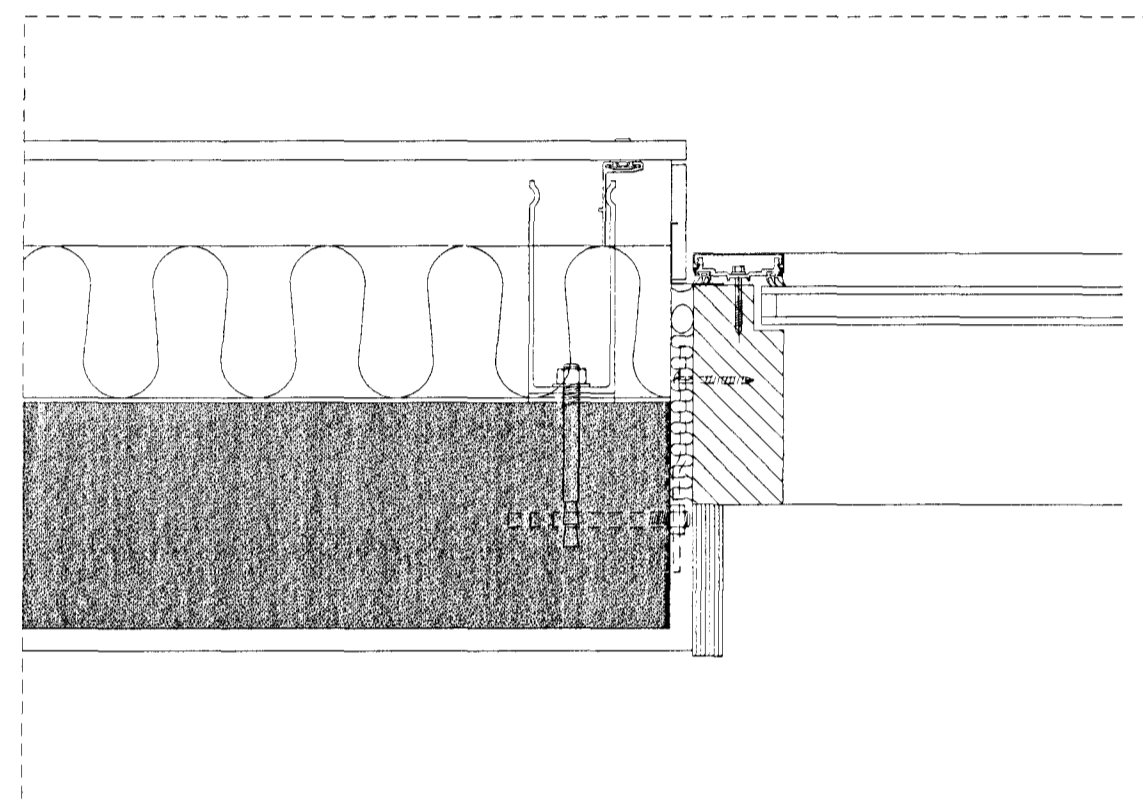
lárétt deili 401 B við geymsludyr á gaffli



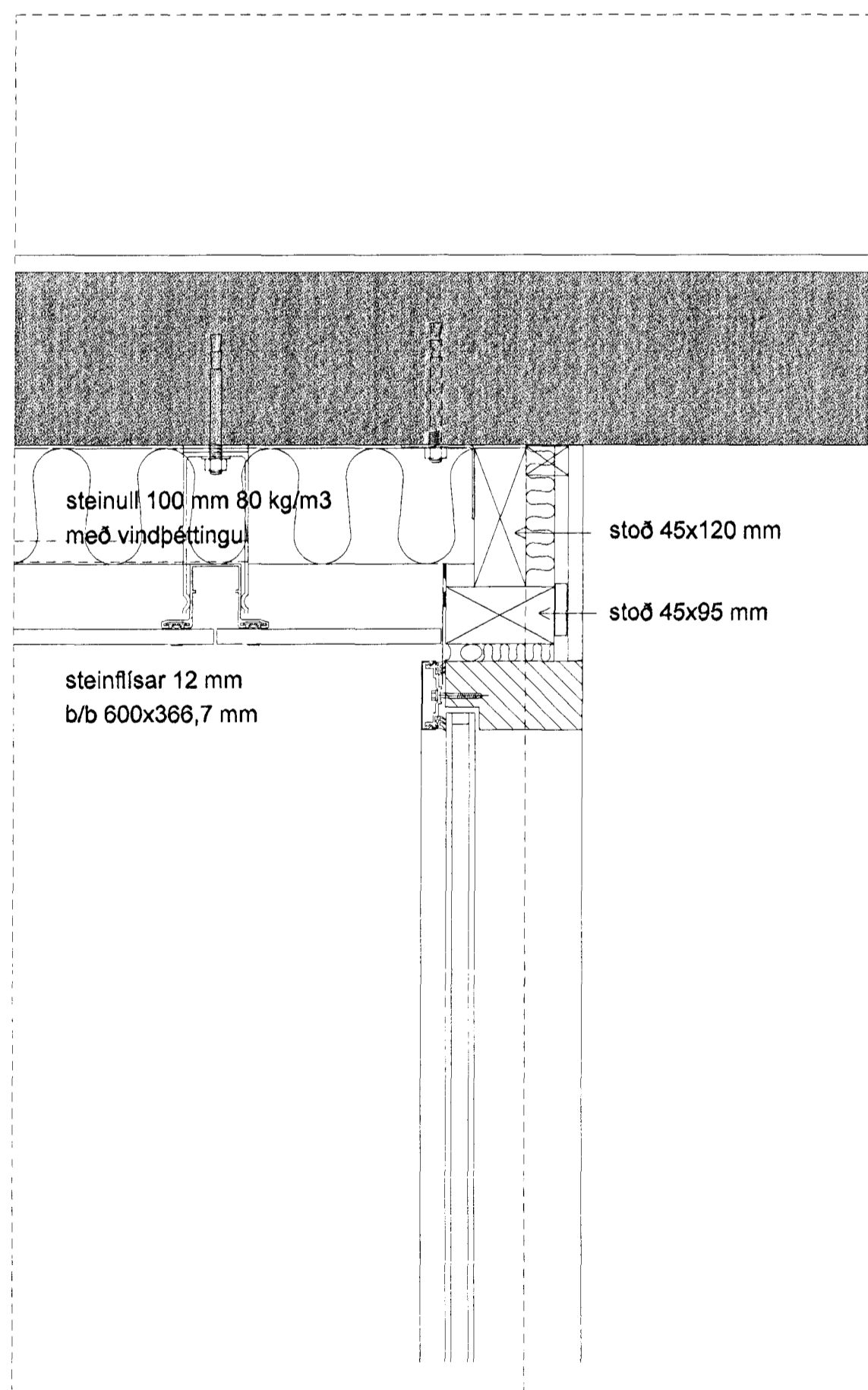
lárétt deili 401 C við geymsludyr og úthorn



lárétt deili 401 D við glugga

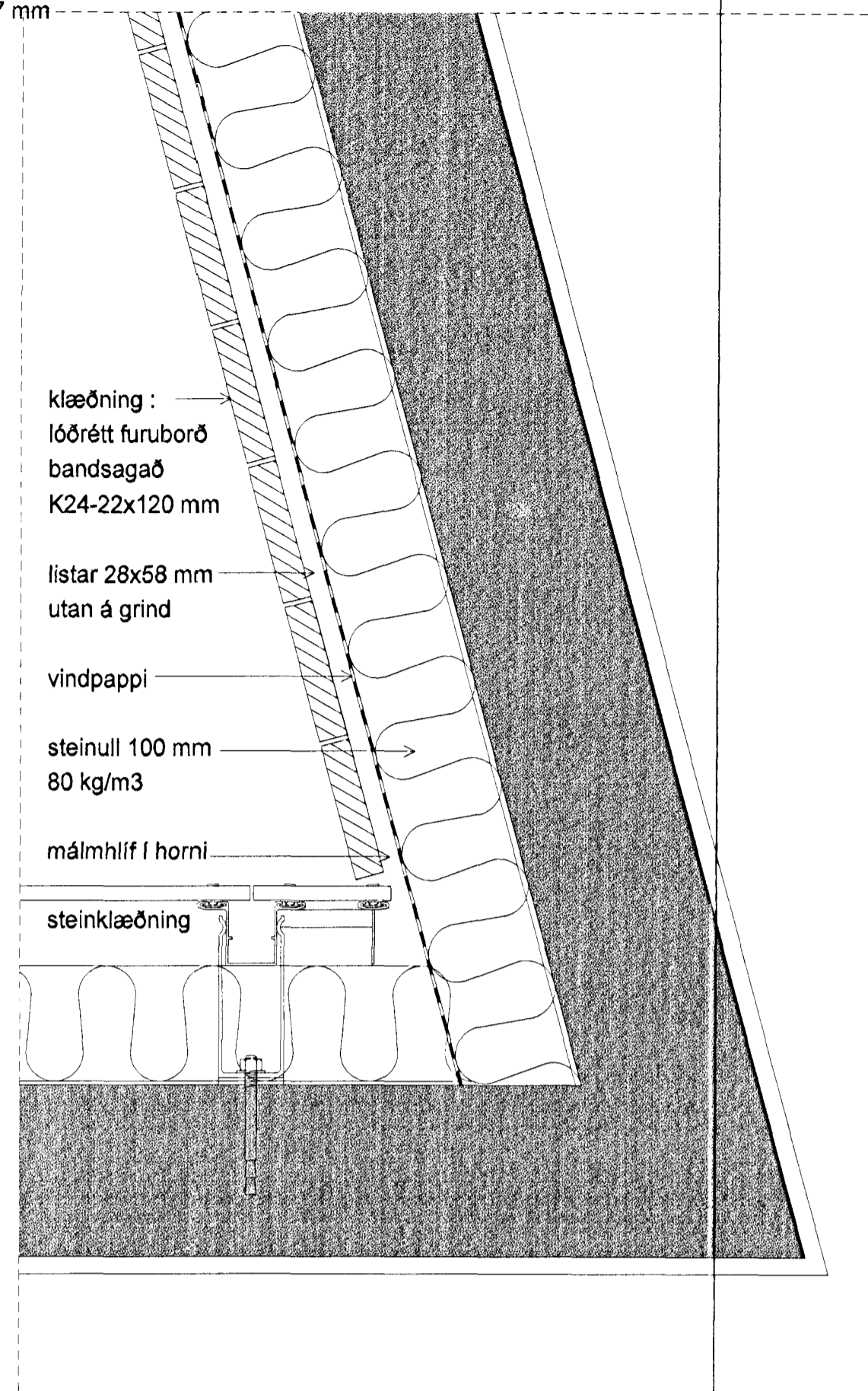


lárétt deili 401 E við aðaldyr

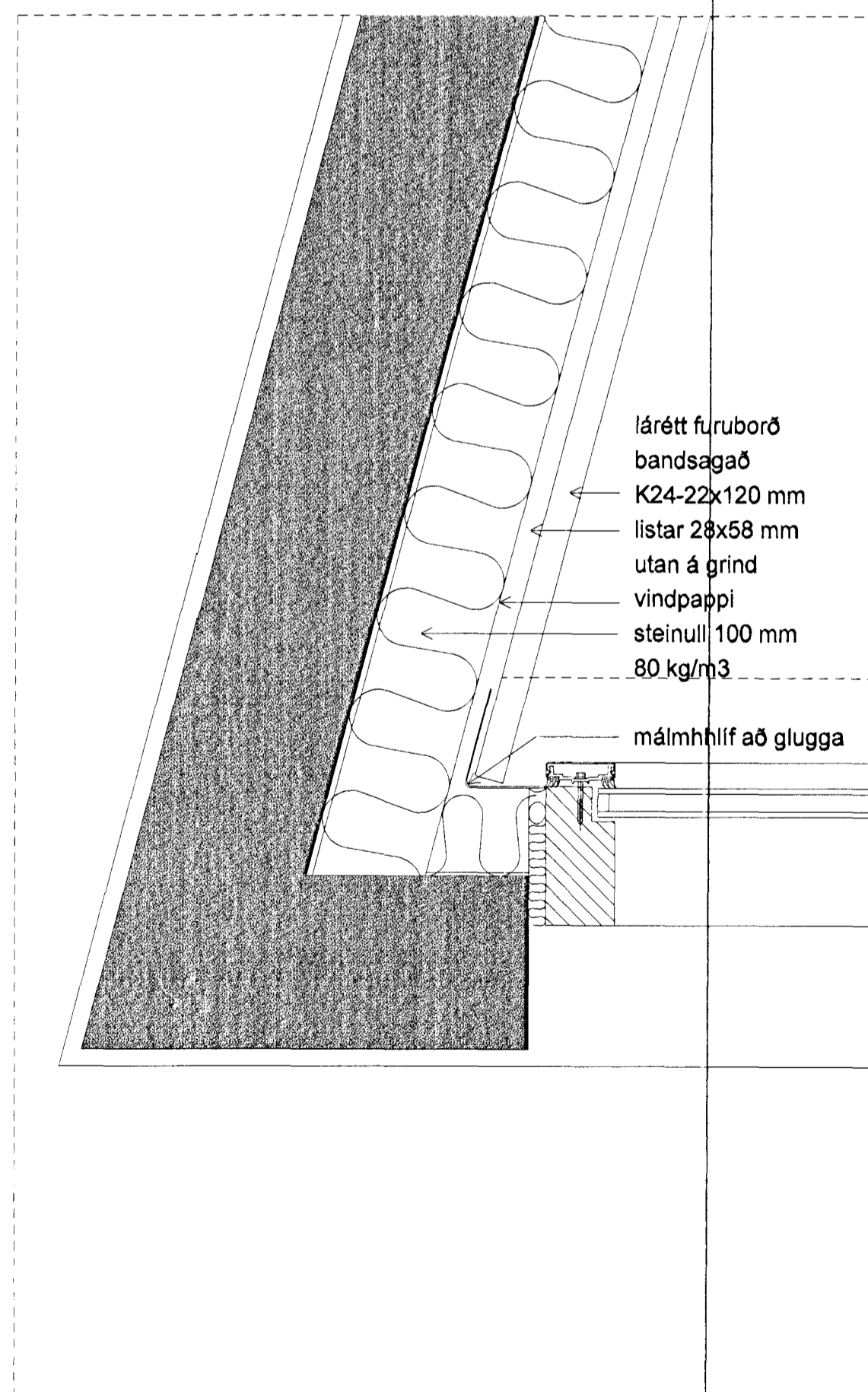


lárétt deili 401 F innhorn á gaffli

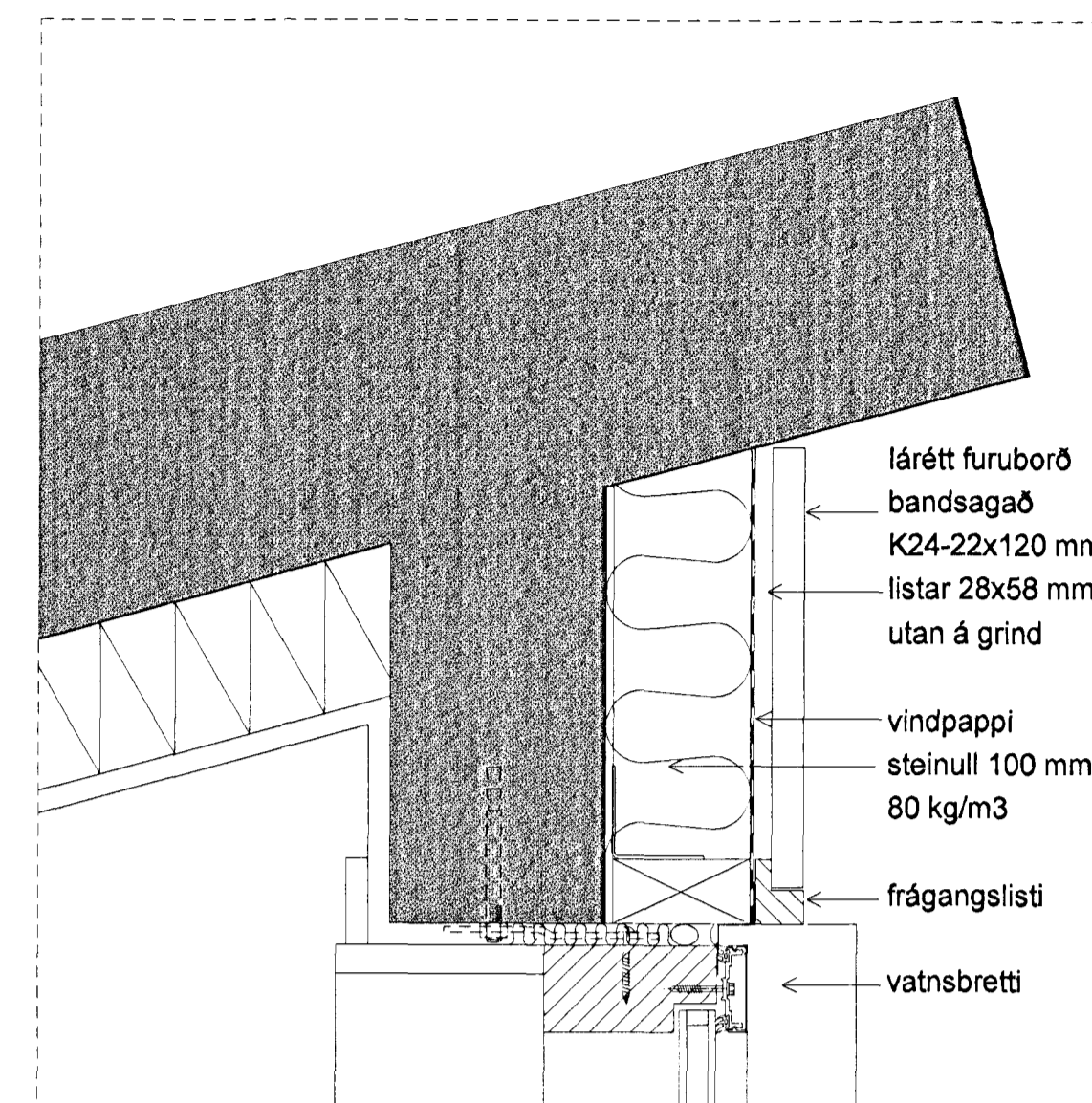
steinflísar 12 mm
b/b 600x366,7 mm



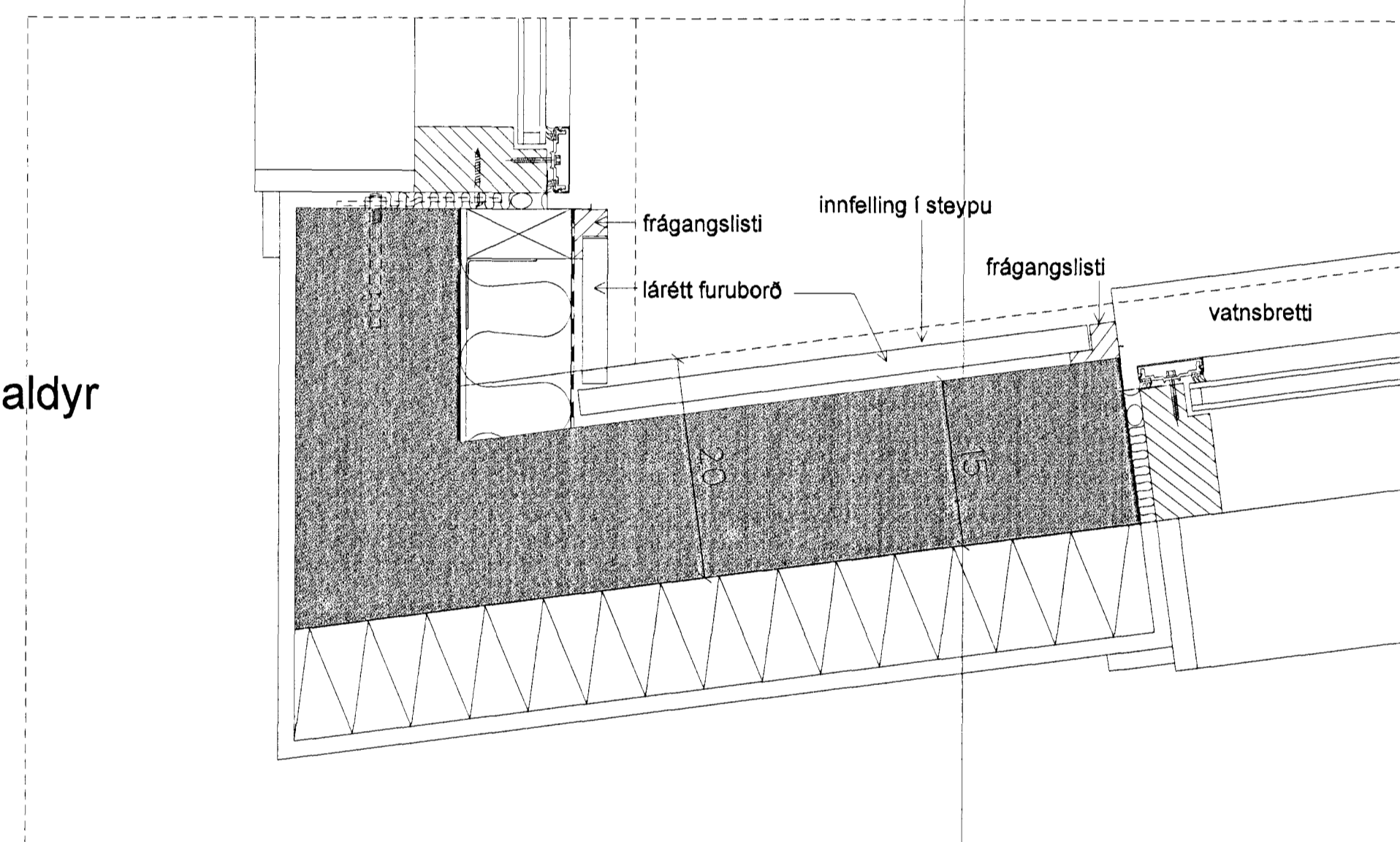
lárétt deili 401 G innhorn ofan við glugga við aðaldyr



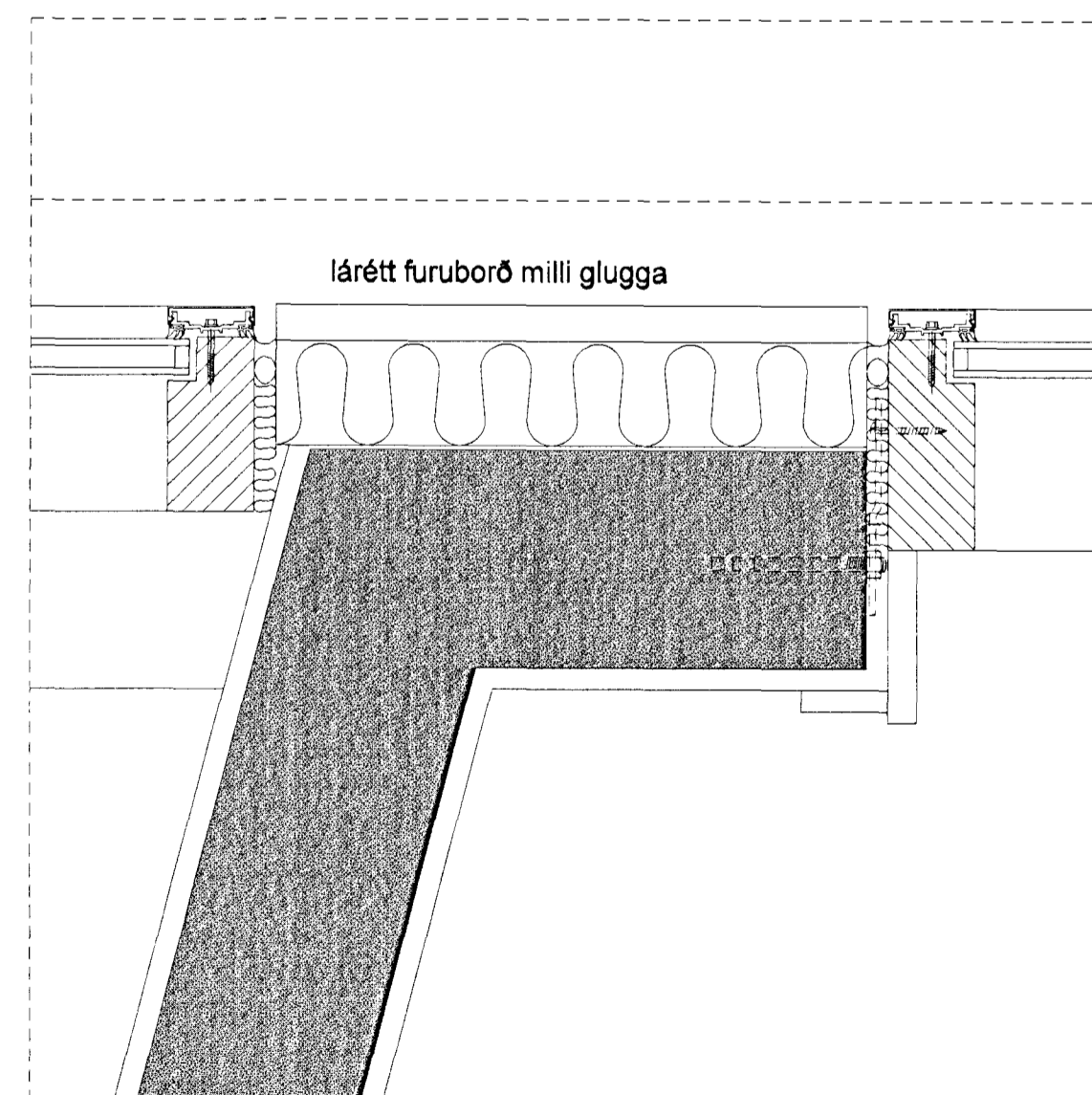
lárétt deili 401 H við innhorn á norðurhlíð



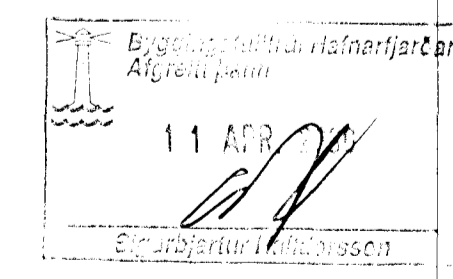
lárétt deili 401 I úthorn á norðurhlíð



lárétt deili 401 J við innhorn á norðurhlíð



lárétt deili 401 K milli glugga í stjórnun



LEIKSKÓLI HÁHOLTI 17
Í HAFNARFIRÐI

verk nr. 990306 teikn. nr. 4-01

lárétt deili 401 A til 401 K í steinklæðningu og norðurhlíð

1:5 A.Th. G.G. 28.10.1999

alvína thordarson arkitekt fal
k.t. 081039-2879 sími 588 8830
teiknistofa viðhið 45 fax 588 5530
105 reykjavík netfang alvina@simnet.is