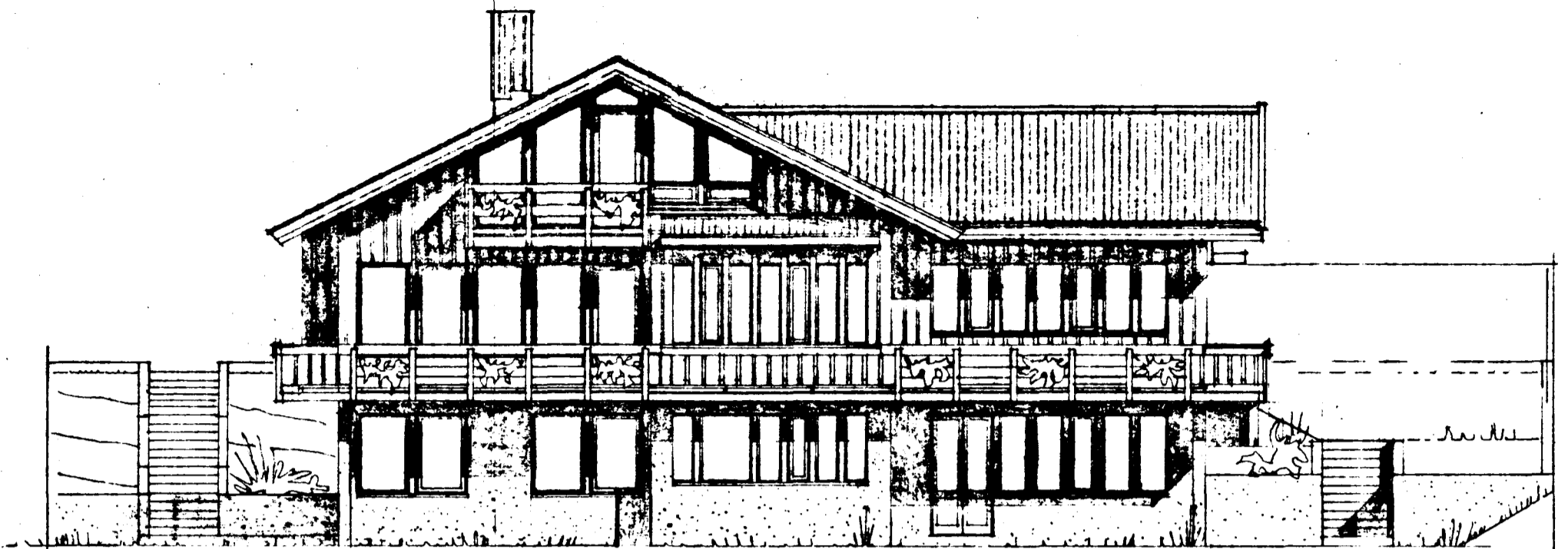


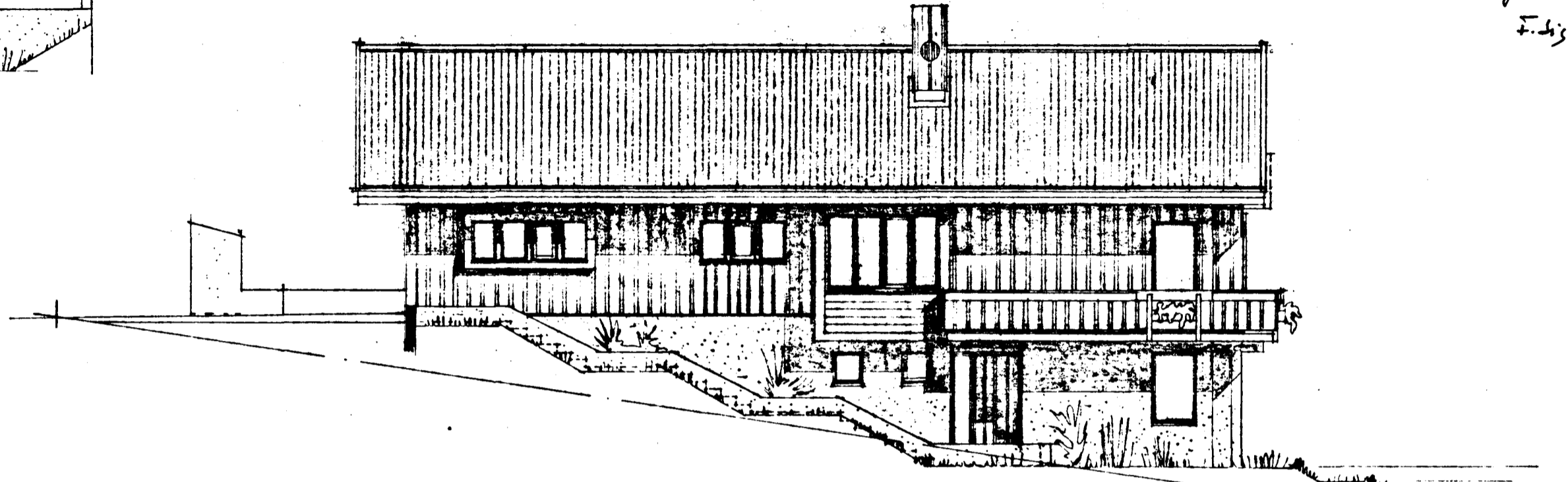
Samþykkt á fundi bygginga-
nefndar þ. 11.6.1980
BYGGINGAFULLTRÚINN
Í HAFNARFIRÐI
E. Guðm.

Ganga skal frá opnu
eldstæði í samráði við
slökkviliðsstjóra

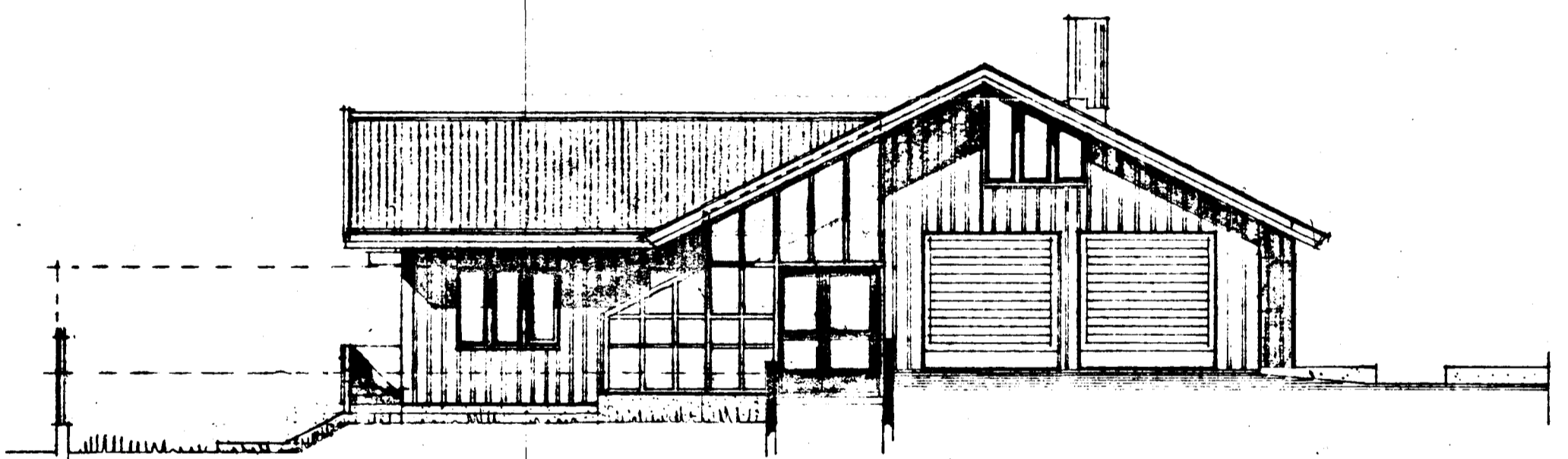
11/6 80
A. Þórðsson til veggja á
lögmarkum fletad
F. Þ.



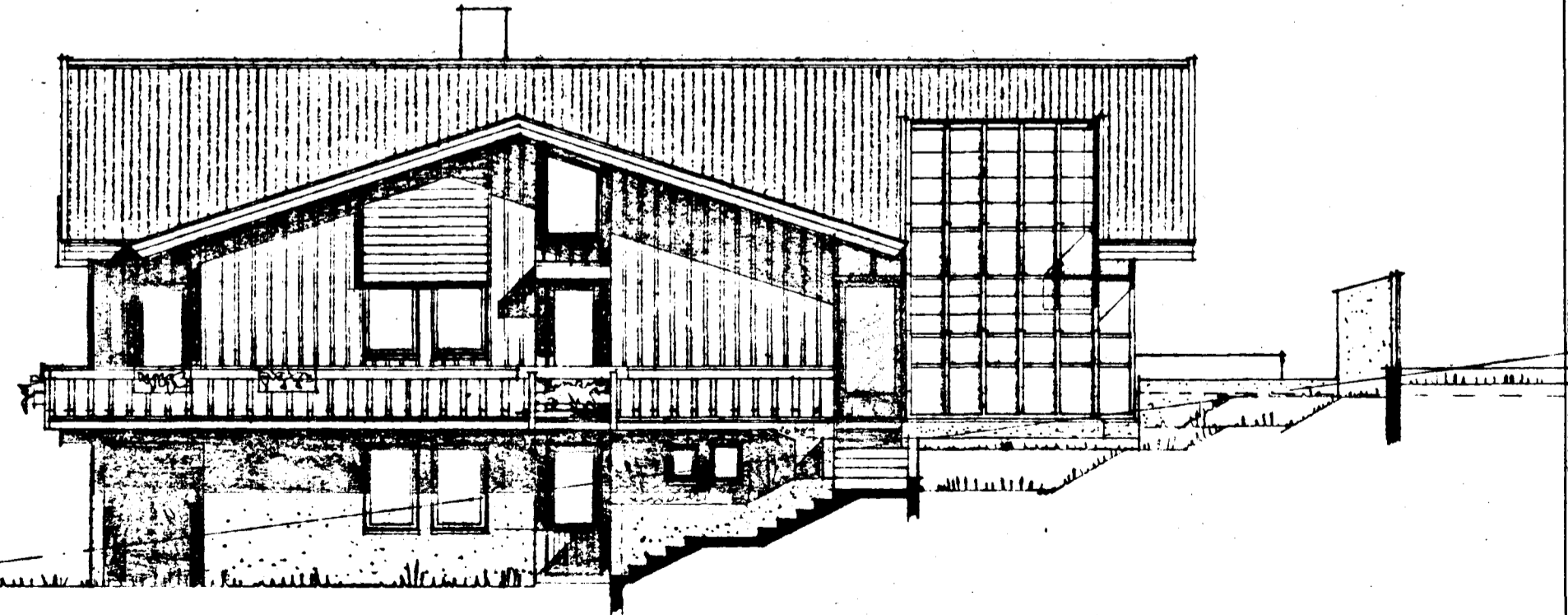
NORÐVESTUR



NORÐAUSTUR



SUÐAUSTUR



SUÐVESTUR