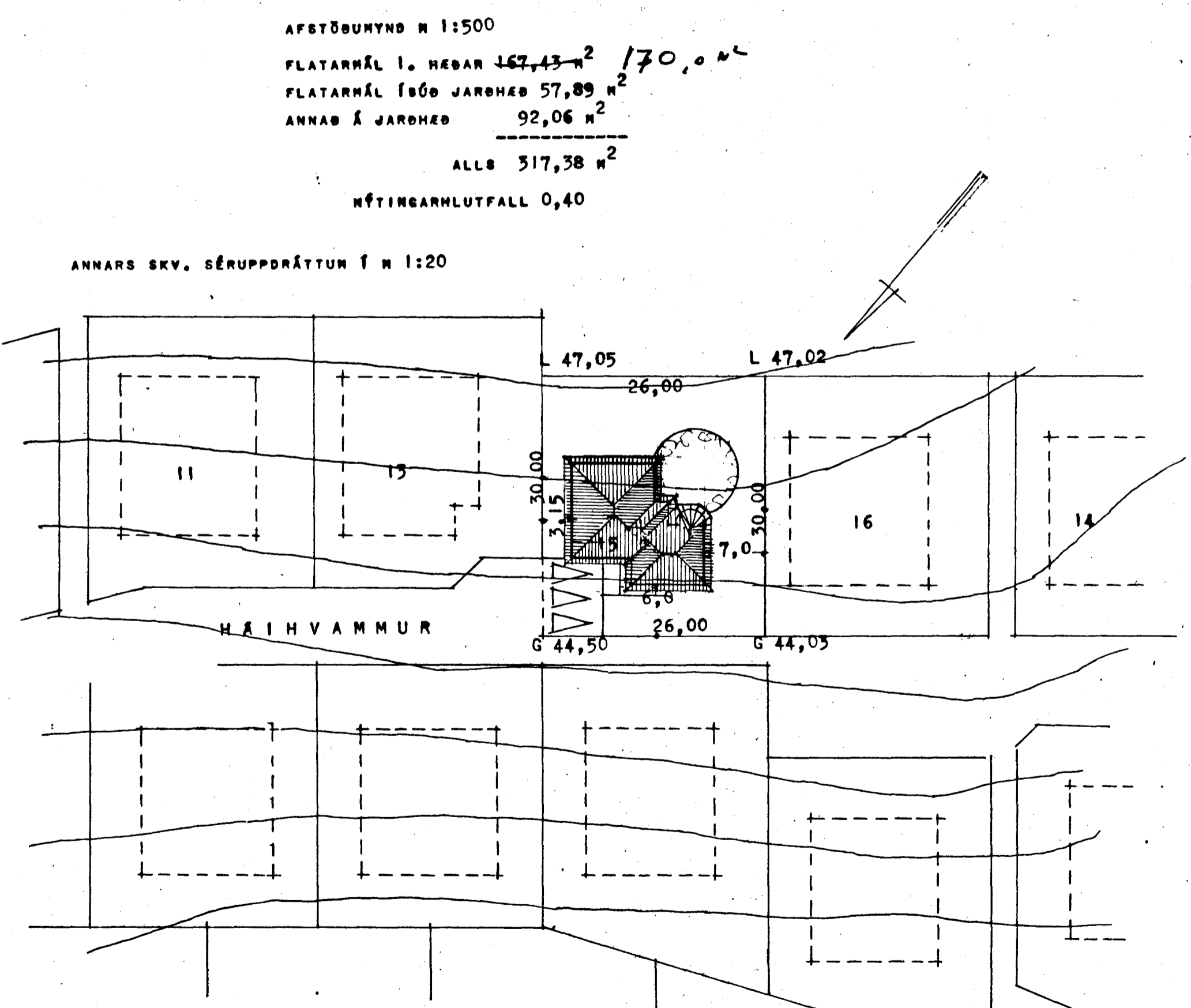
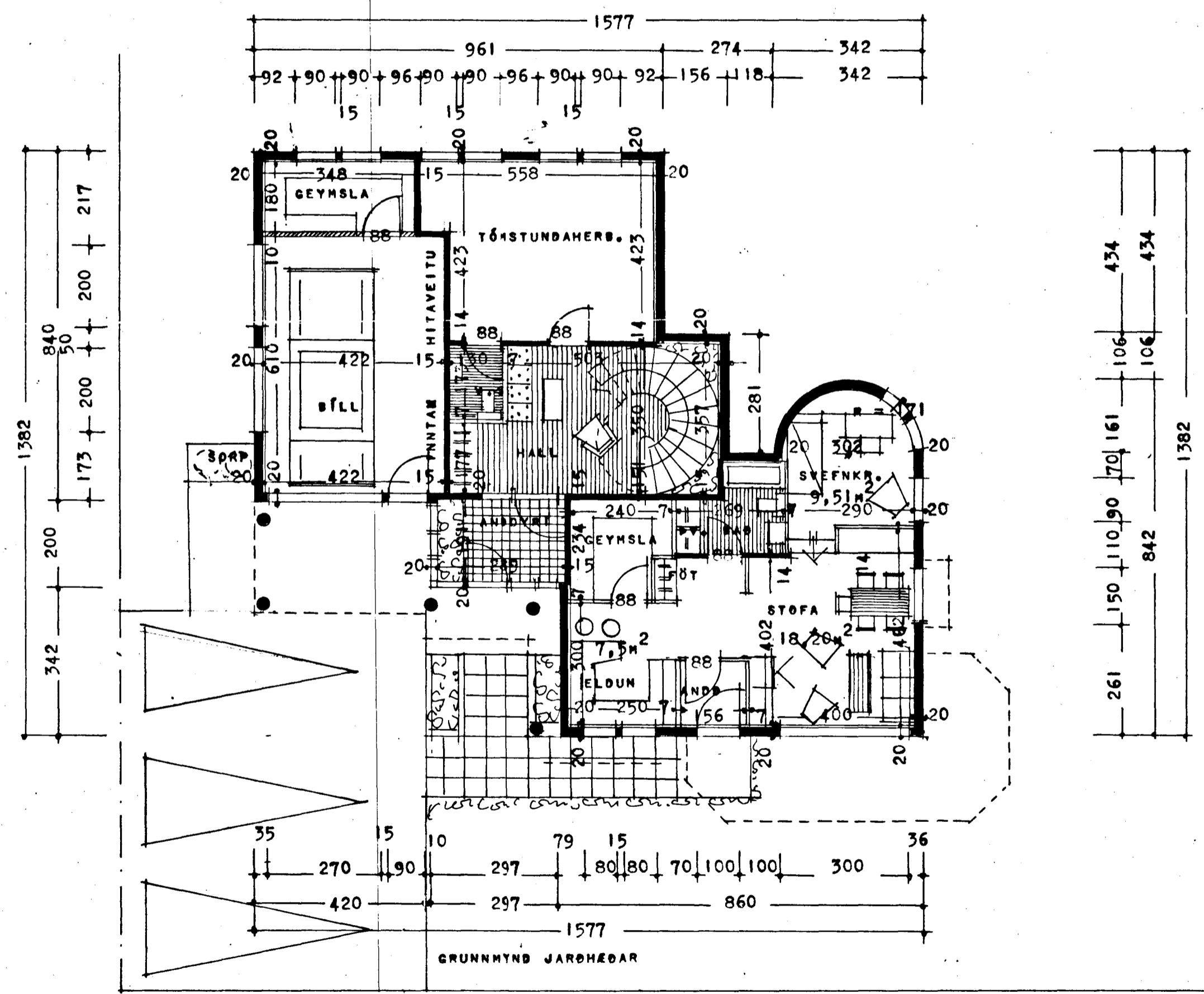


Samþykkt á fundi bygginga-
nefndar þ. 17/9 1980
BYGGINGAUFULLTRÚINN
Í HAFNARFIRÐI
L. Jartan

KÓLUNARTÖLUR

ÚTVEGGIR	1,0	m / m ²	c°
ÞAK	0,30	---	---
GÓLF	0,40	---	---



AFSTÖÐUMYND M 1:500
 FLATARMÁL 1. HÉÐAR 167,43 m² *170,0 m²*
 FLATARMÁL 1600 JARÐHÉÐ 57,89 m²
 ANNAR Á JARÐHÉÐ 92,06 m²
 ALLS 317,38 m²
 HÉTINGARHLUTFALL 0,40

ANNARS SKV. SÉRUPPDRÁTTUM f m 1:20

REYKJAVÍK Í SEPTEMBER 1980
L. Jartan Þorsson