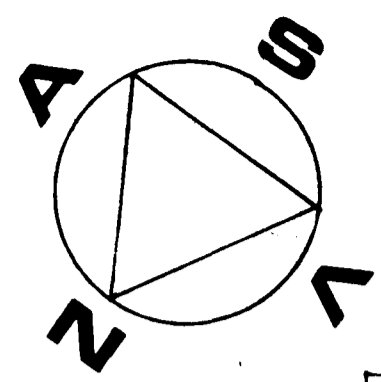
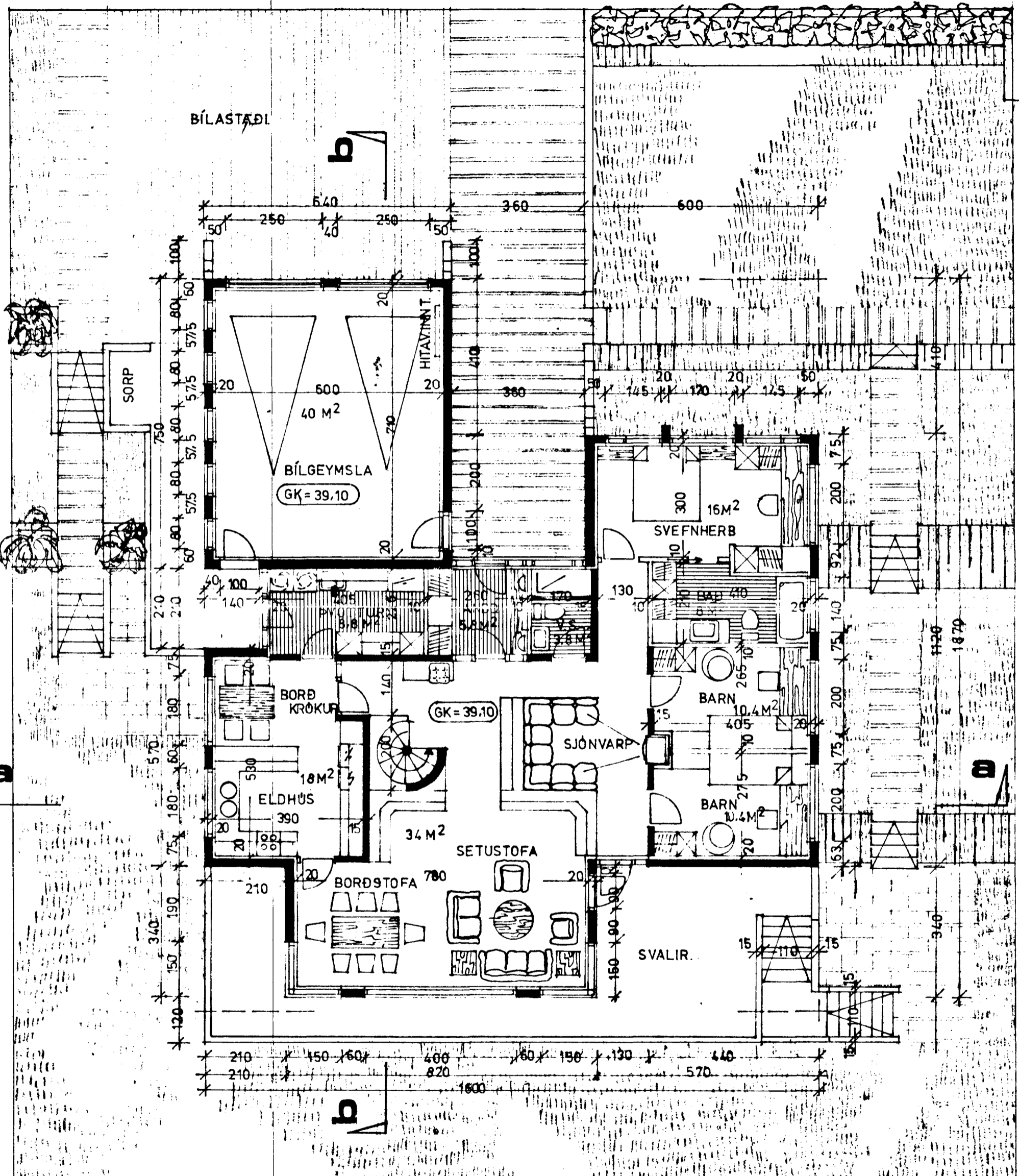


# HÁIHVAMMUR 4.

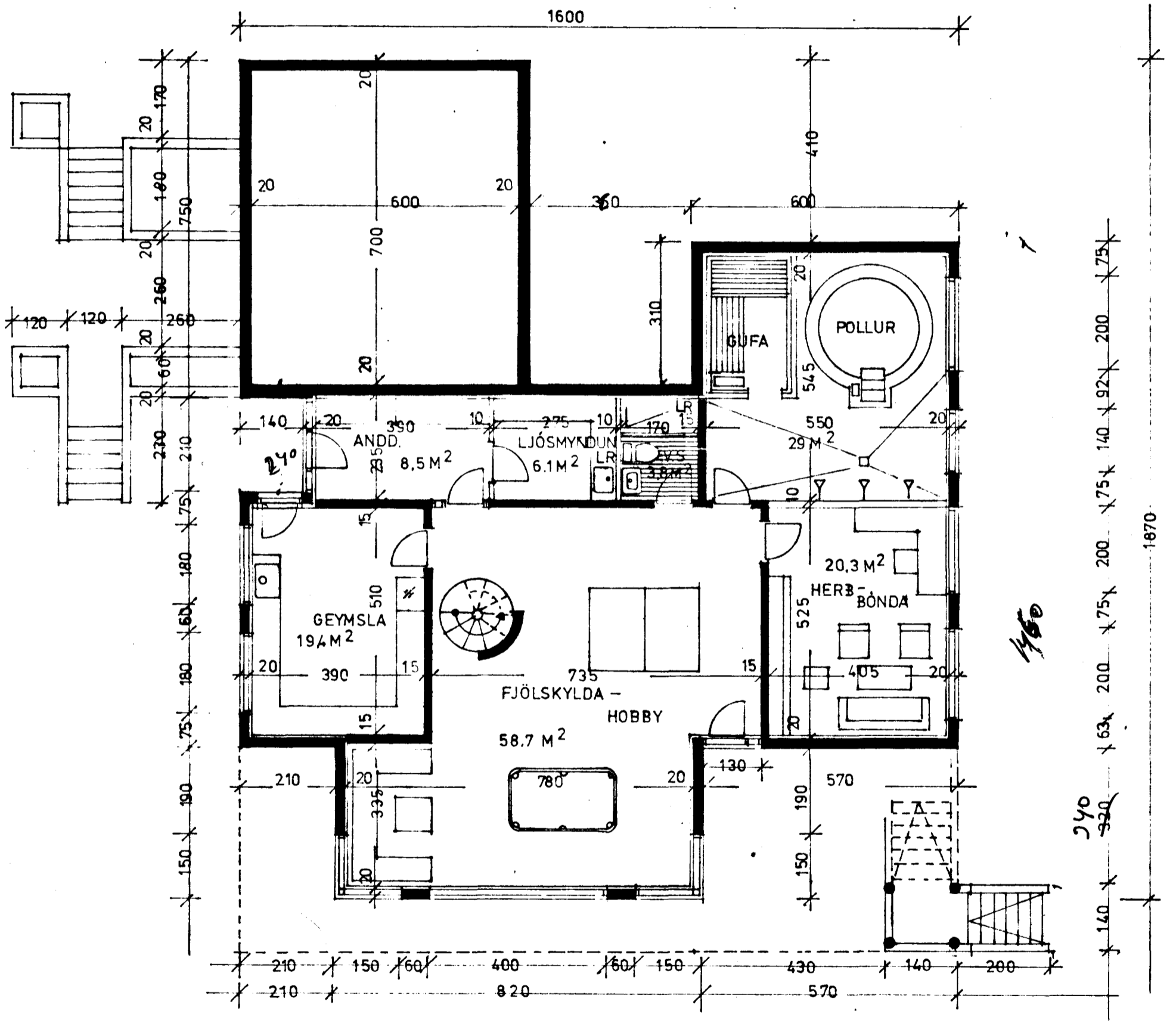
Samþykkt á fundi bygginga-  
nefndar þ. 7.15.1980  
BYGGINGAFULLTRÚÐIN  
Í HAFNARFIRÐI  
*Sigurður Þorvarðarson*



FLATARMÁL HUSS	M <sup>2</sup> brúttó	M <sup>2</sup> netto
1 HÆÐ HÚÐ	171,2	151,8
-4- BÍLGÆMSLA	48	40
KJALLARI	171,7	154,5
RÖMMÁL HÚSS = <del>4229</del> 1245 M <sup>3</sup> brúttó		
NÝTINGARHLUTFALL LÓÐAR ≈ 0,24		



**grunnmynd hæðar m 1:100**



**grunnmynd kjallara m 1:100**

*Sigurður Þorvarðarson*