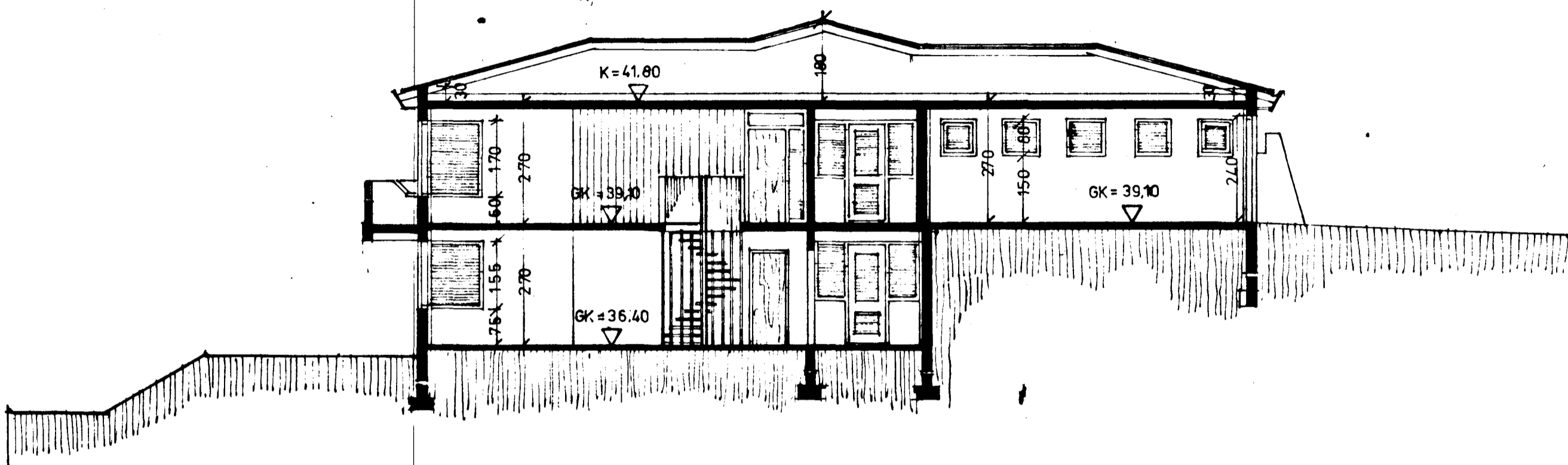
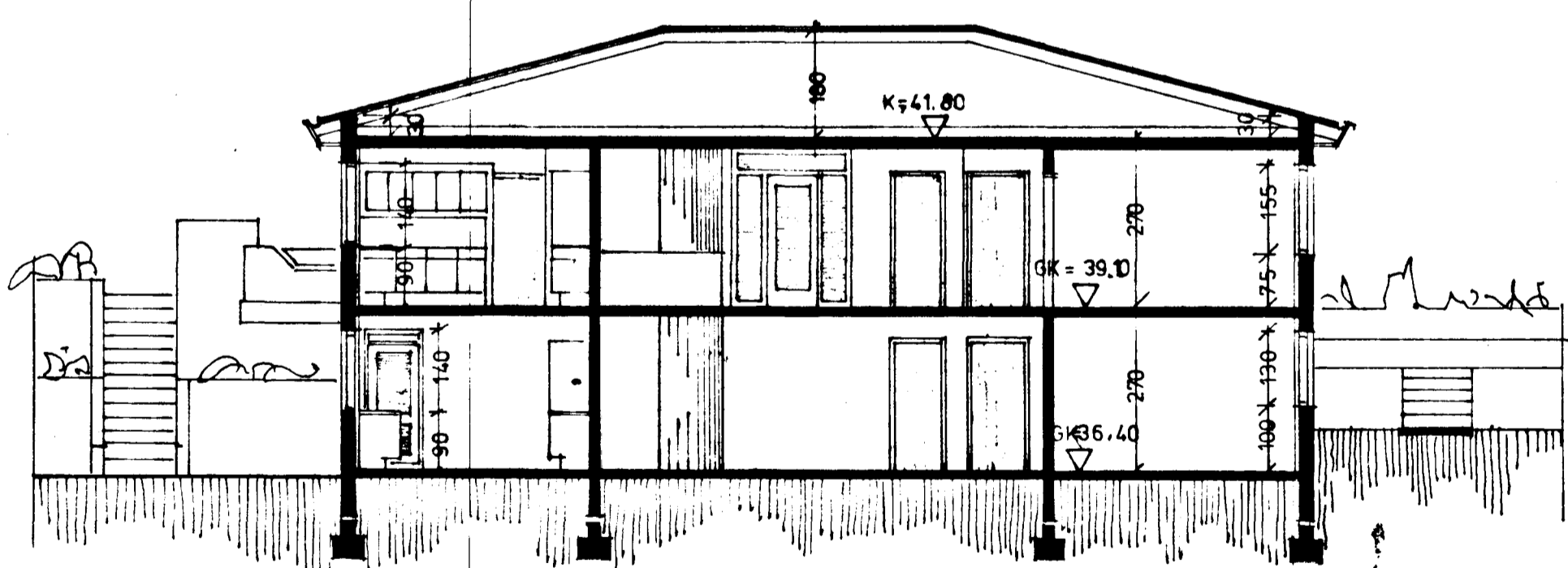


HÁIHVAMMUR 4.

Samþykkt á fundi bygginga-
nefndar þ. 21.5.1980
BYGGINGAFULLTRÚIN
Í HAFNARFIRÐI

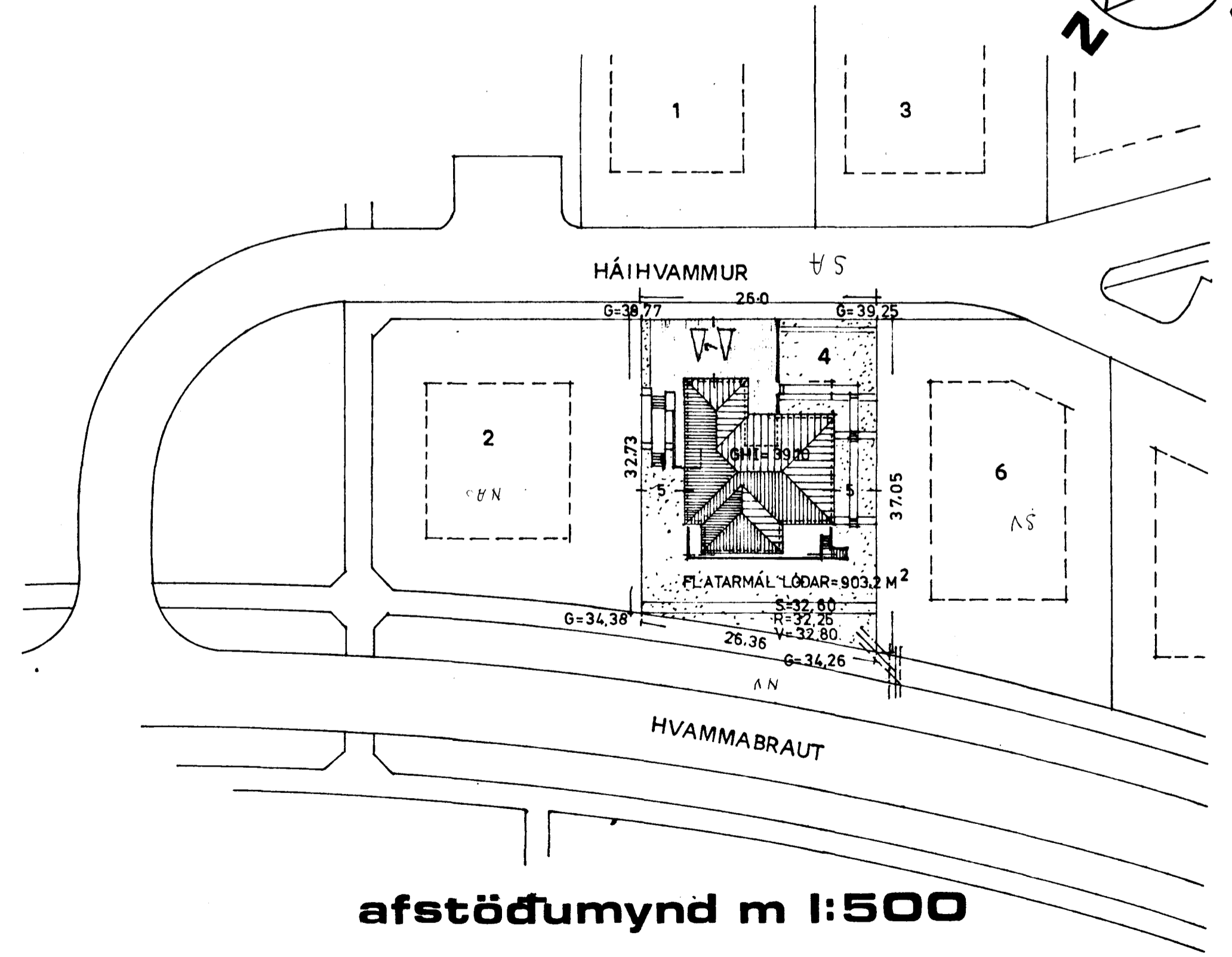
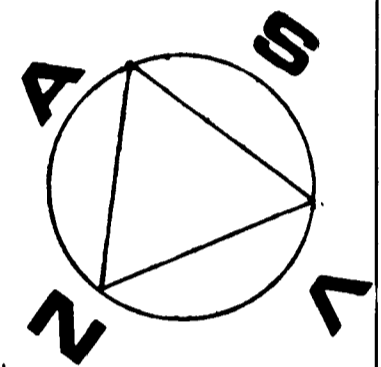


snid b-b m 1:100



snid a-a m 1:100

KÓLNUNARTÖLUR (EFNISLÝSING)	
PAK: 16 cm JB.ST. 15cm EINANGRUN	$\Rightarrow K = 0,27 \text{ W/m}^2\text{C}^\circ$
KJALLAR: UPPHITABUR LOFTPLATA 16cm JB.ST.	
KJALLARAGÓLF: 4cm LÖGN, 10cm STEYPA, RAKAVARNARLAG, 5cm EINANGRUN	$\Rightarrow K = 0,4 \text{ W/m}^2\text{C}^\circ$
VEGID MEÐALGILDI KÓLNUNARTALNA ÚTVEGGJA MEÐ GLUGGUM OG HURBUM:	
VEGGIR 20cm ST. 7,5cm EINANGRUN 2cm MÚRHÚÐ	$\Rightarrow K = 0,45 \text{ W/m}^2\text{C}^\circ$
TVÖFALT EINANGRUNARGLER 12mm LOFT	$K = 2,5 \text{ W/m}^2\text{C}^\circ$
HURÐIR	$K = 2,2 \text{ W/m}^2\text{C}^\circ \Rightarrow \text{MEÐAL K. GILDI} \approx 0,95 \text{ W/m}^2\text{C}^\circ$



afstöðumynd m 1:500