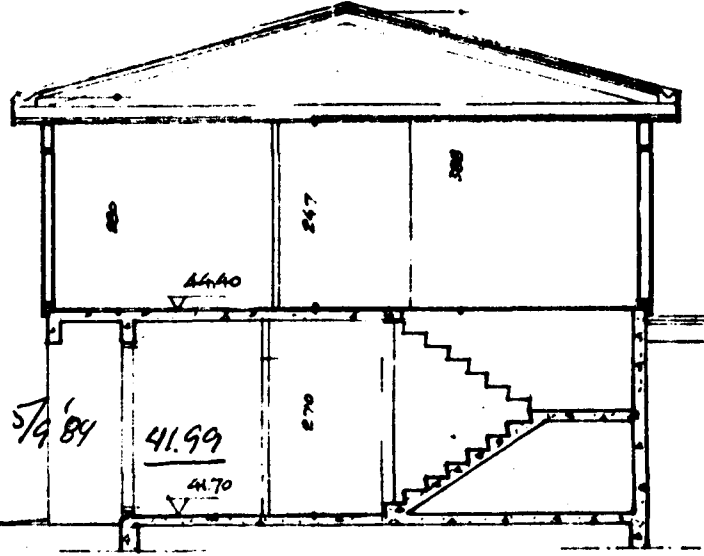
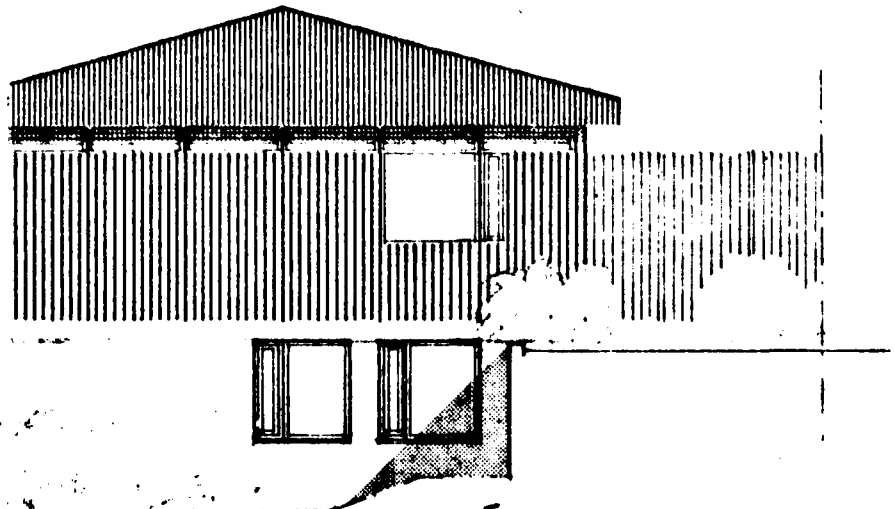
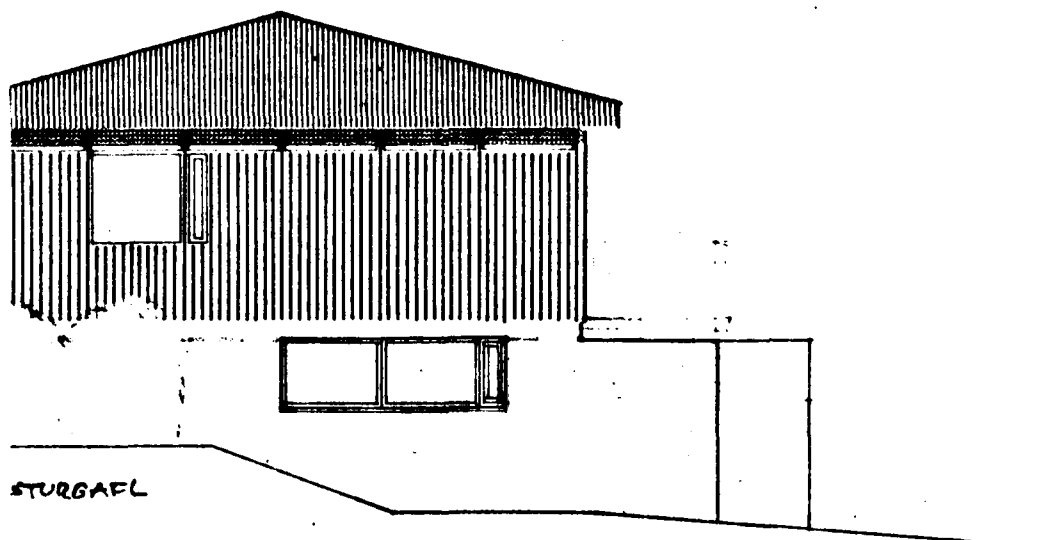


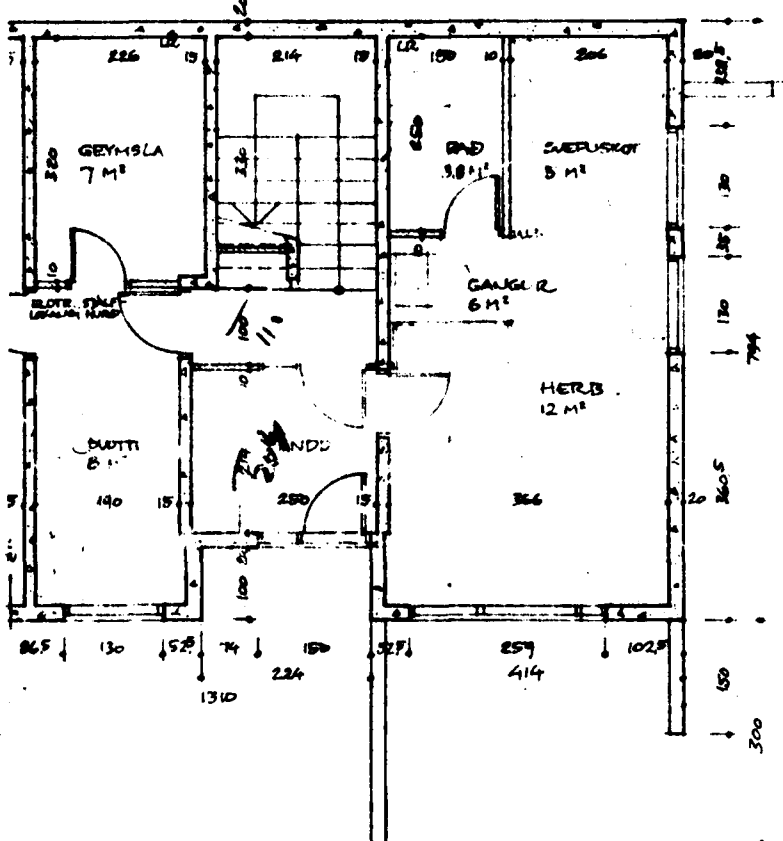
Samþykkt á fundi bygginga-
nefndar þ. 22.8.1979
BYGGINGAFULLTRÚINN
Í HAFNARFIRÐI
S. Þ. Þorsteinsson



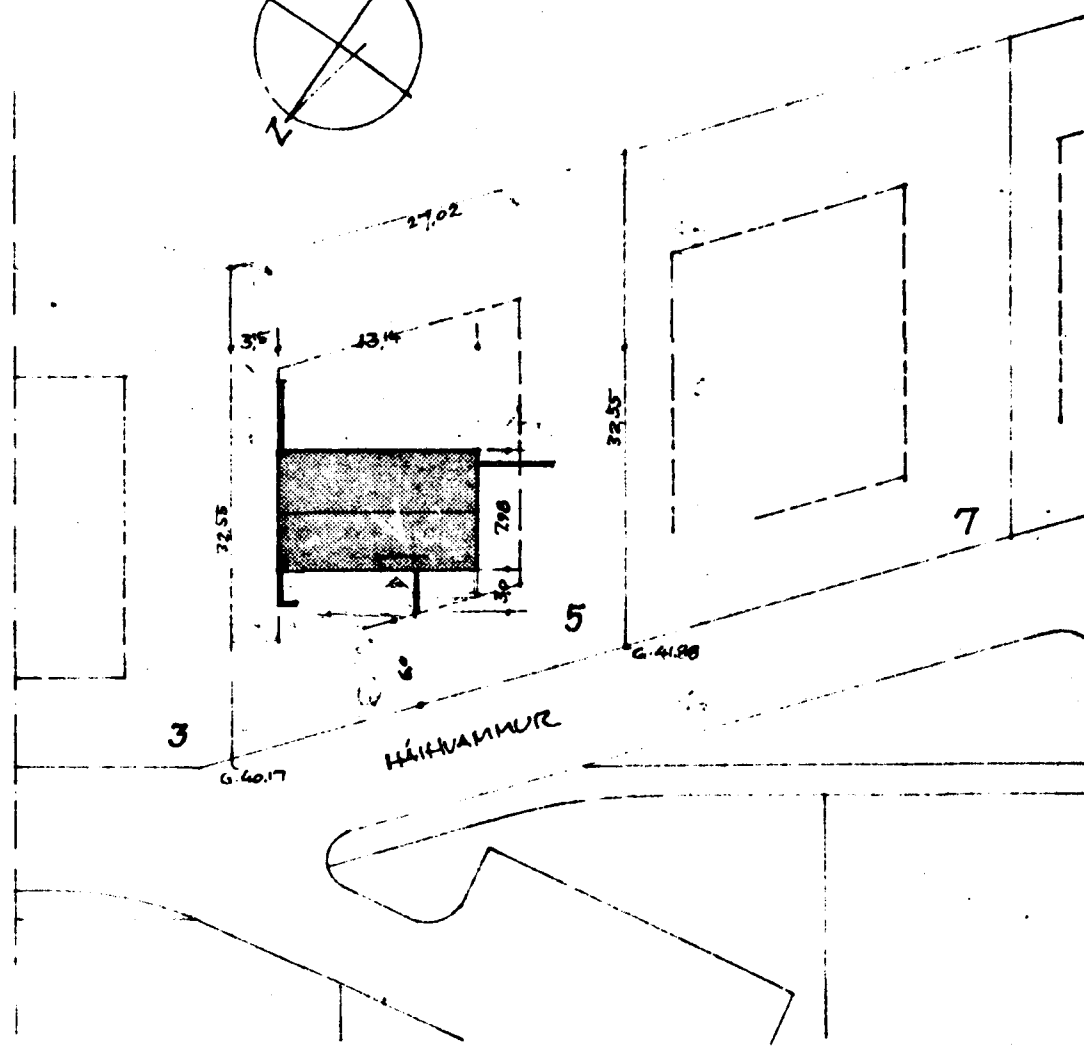
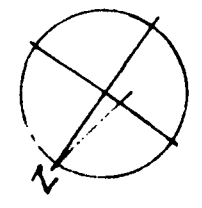
shv. mál. 7/9 '84

41.99
41.70

STURGAÆL
40.7
VID LÖGABÓRÐ
CA 40.80 - F. MIÐJUM HULS
FYRIR MIÐJUM BÍLSKÚL
HALLI Á INNKEYRSLU - CA 1:0.5



HÉÐAR - 1:100



AFSTÖÐUMMÁL, 1:500

FLATARMÁL (BR.)	RÚMMÁL (BR.)
104.8 M²	350 M³
101.8	275
206.6 M²	625 M³

HÚSGERÐ 46 (A1-K)

HÚS ÚR TIMBUREININGUM FRÁ HÚSEININGUM HE, SIGLUFIRÐI
(SÍEUSLEYPTUR KJALLARI)
HÁIKHAMMUR 5, HAFNARFIRÐI

GRUNNMYNDIR,
ÚTLIT, SKURÞUR - MELLIV. 1:100
AFSTÖÐUMMÁL - 1:500

REYKJAVÍK Í JÚLÍ 1979 - BRÍÐAG'79 HM
HELGI HAFLÍÐASON, ARKITEKT PÁ
SKIPHÓLTI 1 - SÍM. 2.21.49

TEIÐU NÚ