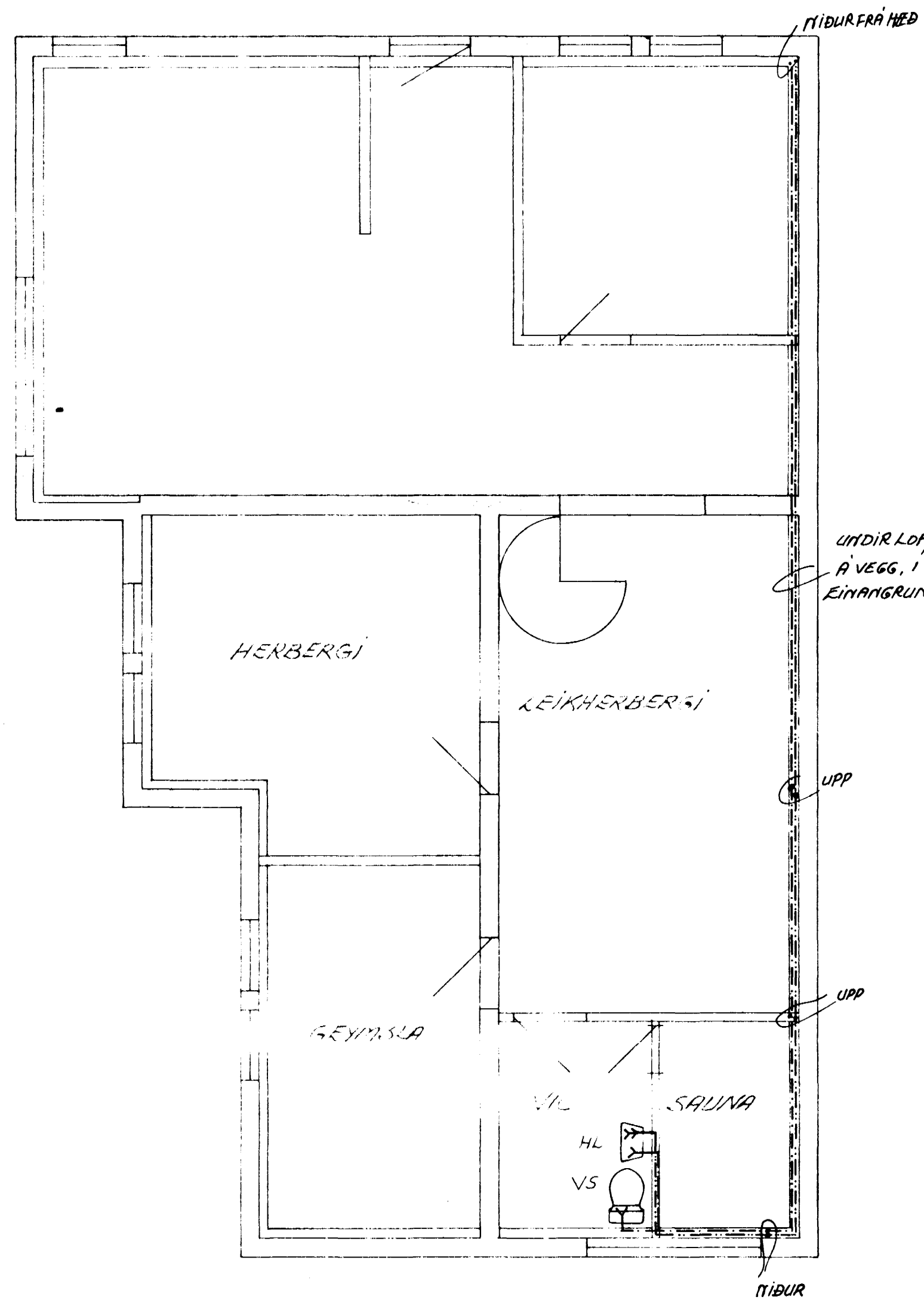
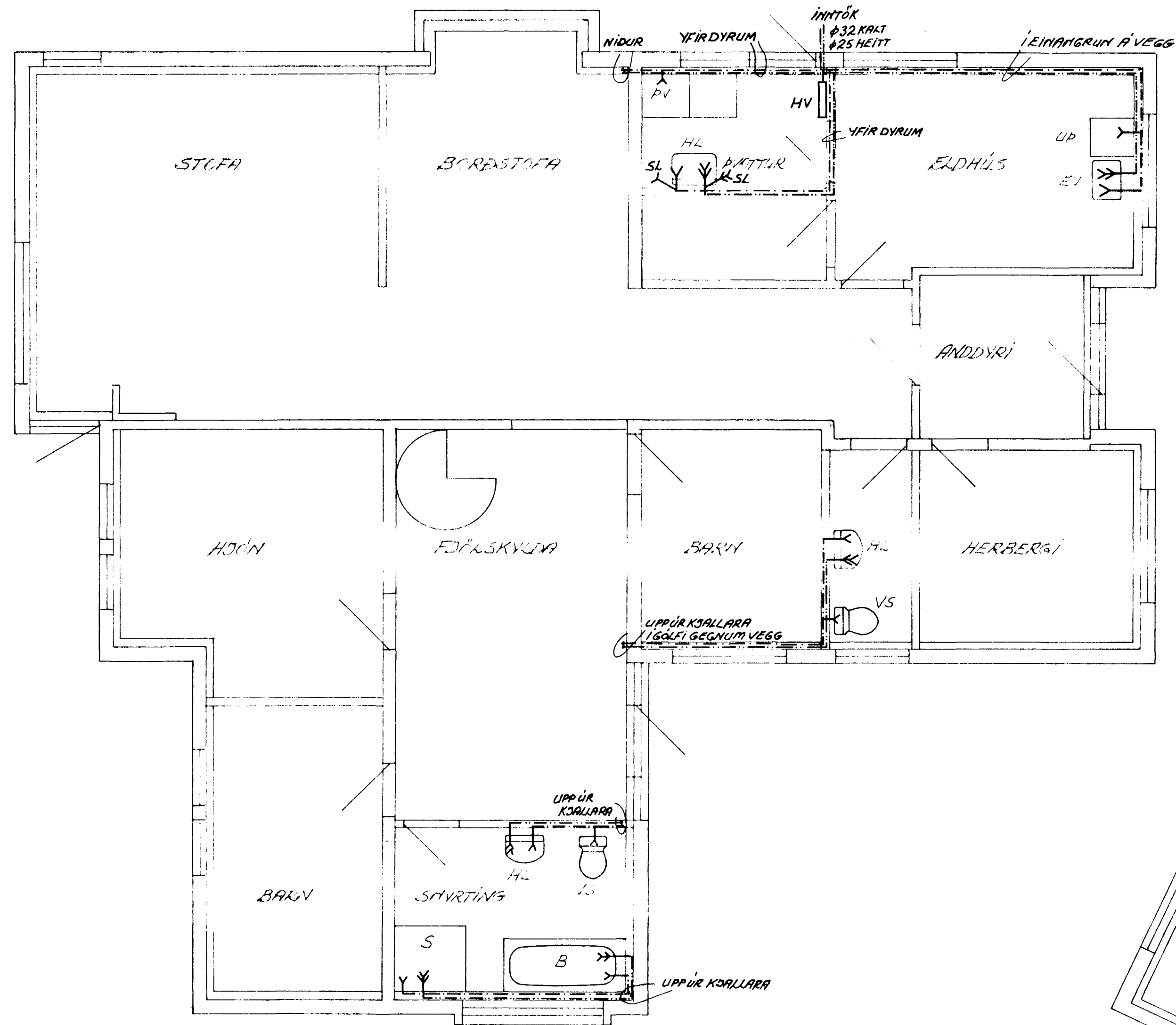


GRUNNMYND KJALLARA 1:50



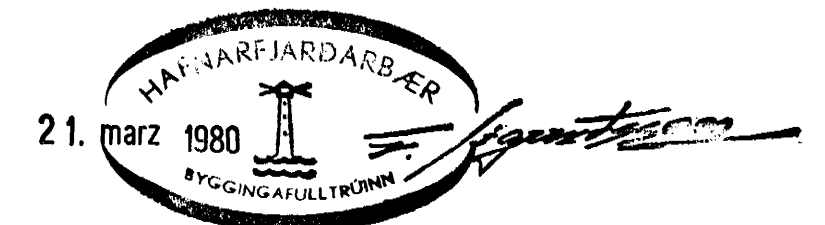
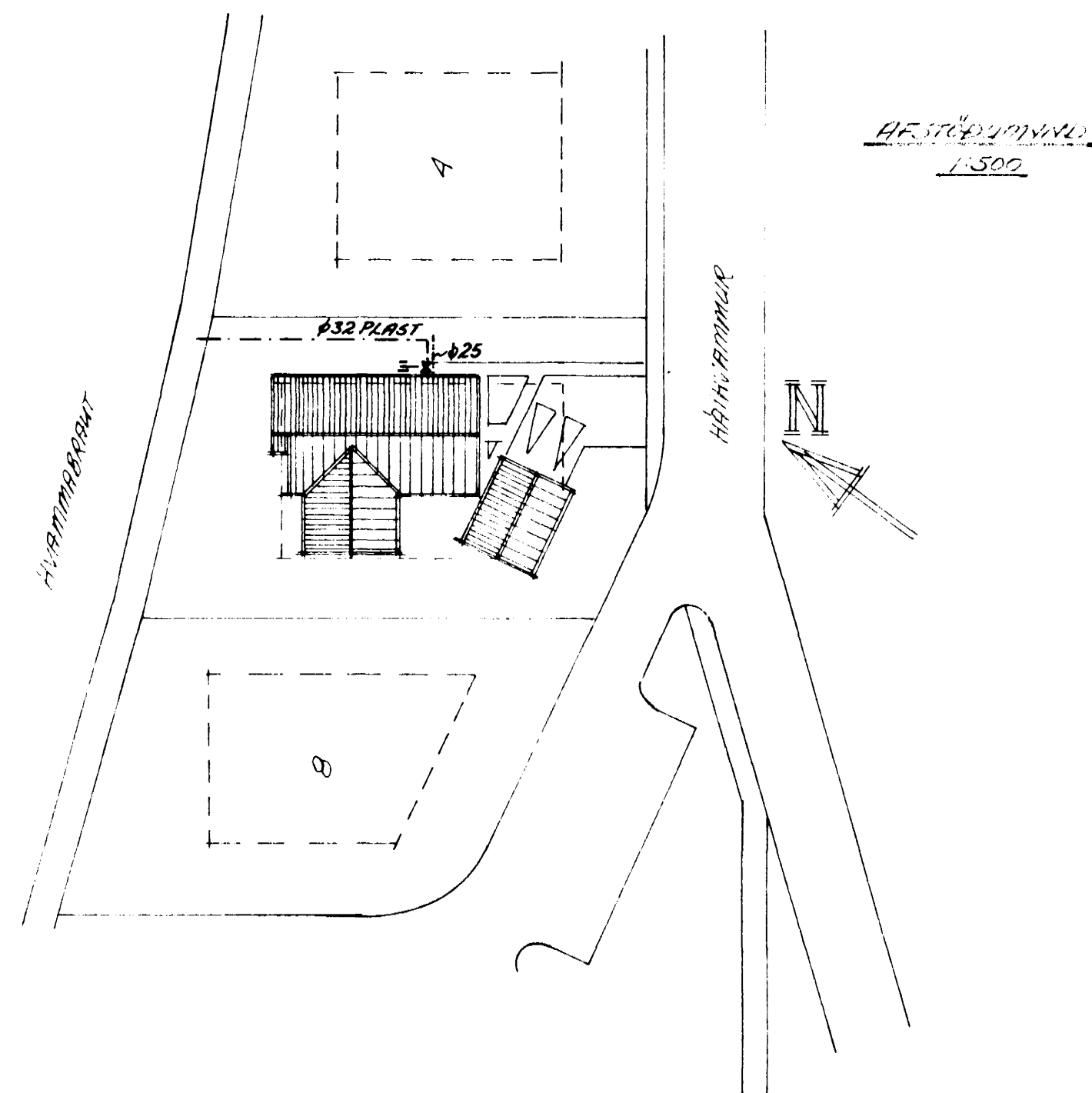
GRUNNMYND HÉÐAR 1:50



SKÝRINGAR:

- — — — — KALT VATN
- — — — — HEITT VATN
- — — — — KALDAVATNSKRANI
- — — — — HEITTA " " " "
- — — — — RENNILOKI
- — — — — MEÐ SPINDLI UPPÚR JÖRD
- — — — — EINSTREYMISLOKI
- — — — — VATNSMÆLIR
- — — — — SLÖNGUKRANI

PIPUR SKULU EINHANGRABAR MEÐ ROMMI GLERULLAR-
HÖLKUM OG VAFBAR MEÐ PLASTDÚK.
ALLT EFTIR, PÍPUR OG FITTING, SKAL VERA GALVANISERAB.
KERFI SKAL PRÓFAD MEÐ KÖLDU VATTNI VÍÐ 6 KG/CM².
BALLDIFIX RENNILOKAR SÉLU VÍÐ HVERT TÆKI, EINSTREYMIS-
LOKI VÍÐ ÞVOTTARVÉLAR. FRÁGANGUR INNTAKS OG LOFT-
PÚÐAR SKV. FÓRSKRIFTUM VATTNSV. HAFAFARFD.



HÁTTAVAMMUR E. HAFNAREYRI	HAFNARF 17.02.80
VATNSLÖGN GRUNNMYNDIR 1:500	TEIKNING NR. 3.1.
HAUSDAR HANNESSON BYGGVERFAFIRMI HAFNAREYRI	