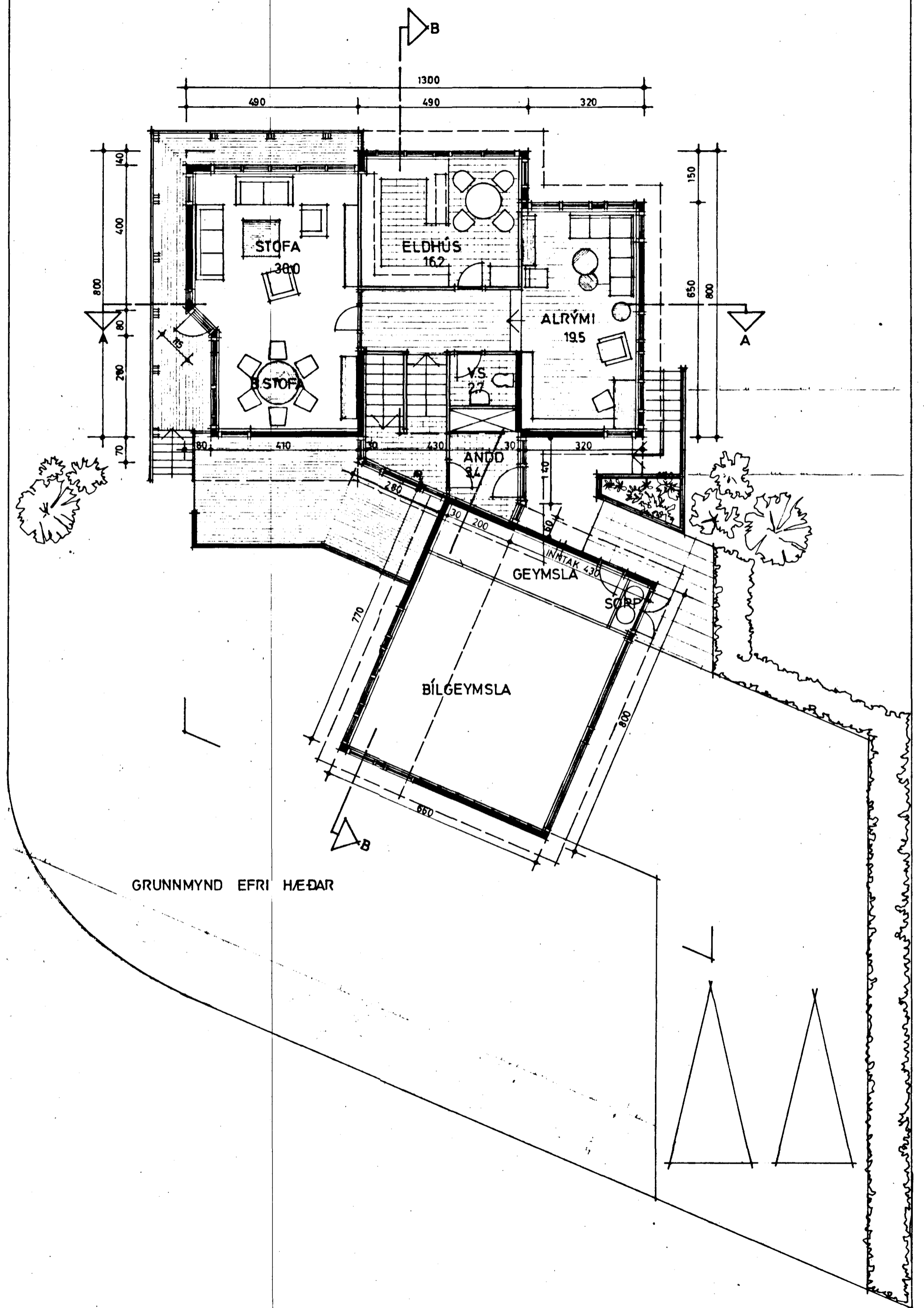
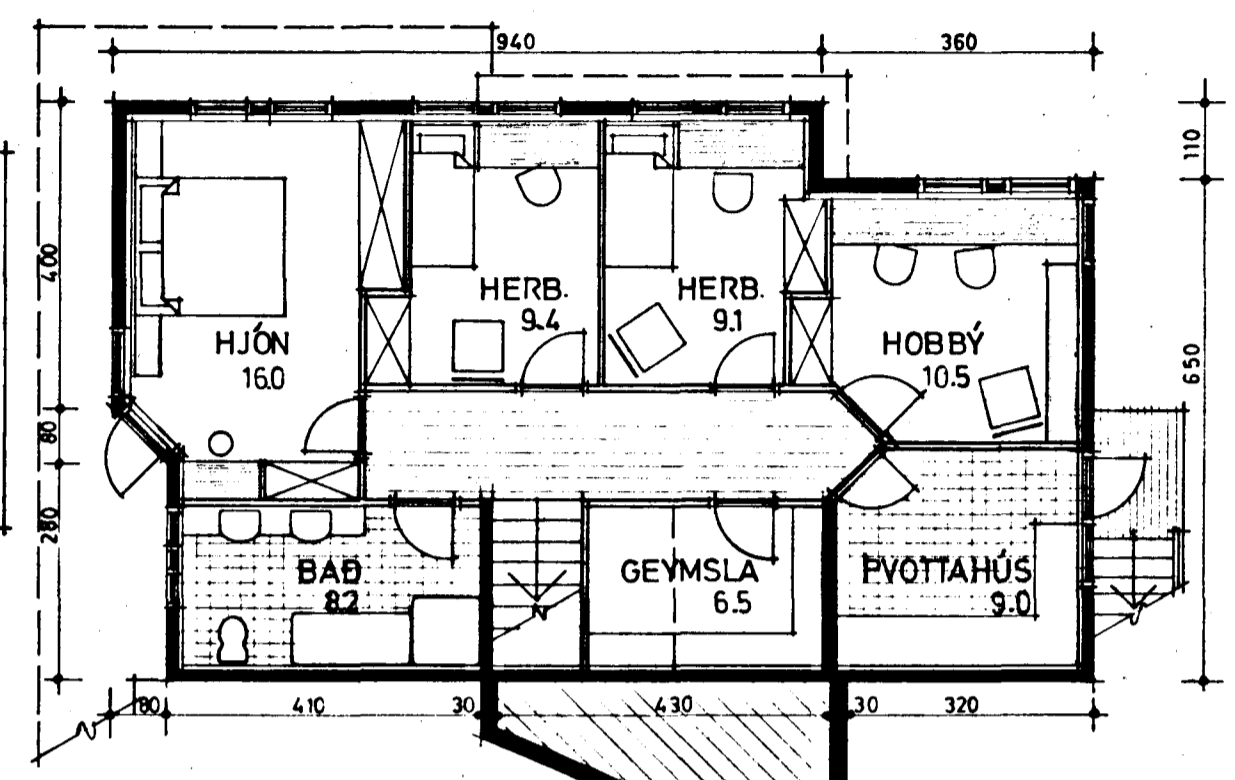


Samþykkt á fundi bygginga-
nefndar þ. 18. 7. 1979
BYGGINGAFULLTRÚINN
Í HAFNARFIRÐI
Þ. Einar Sigurðsson

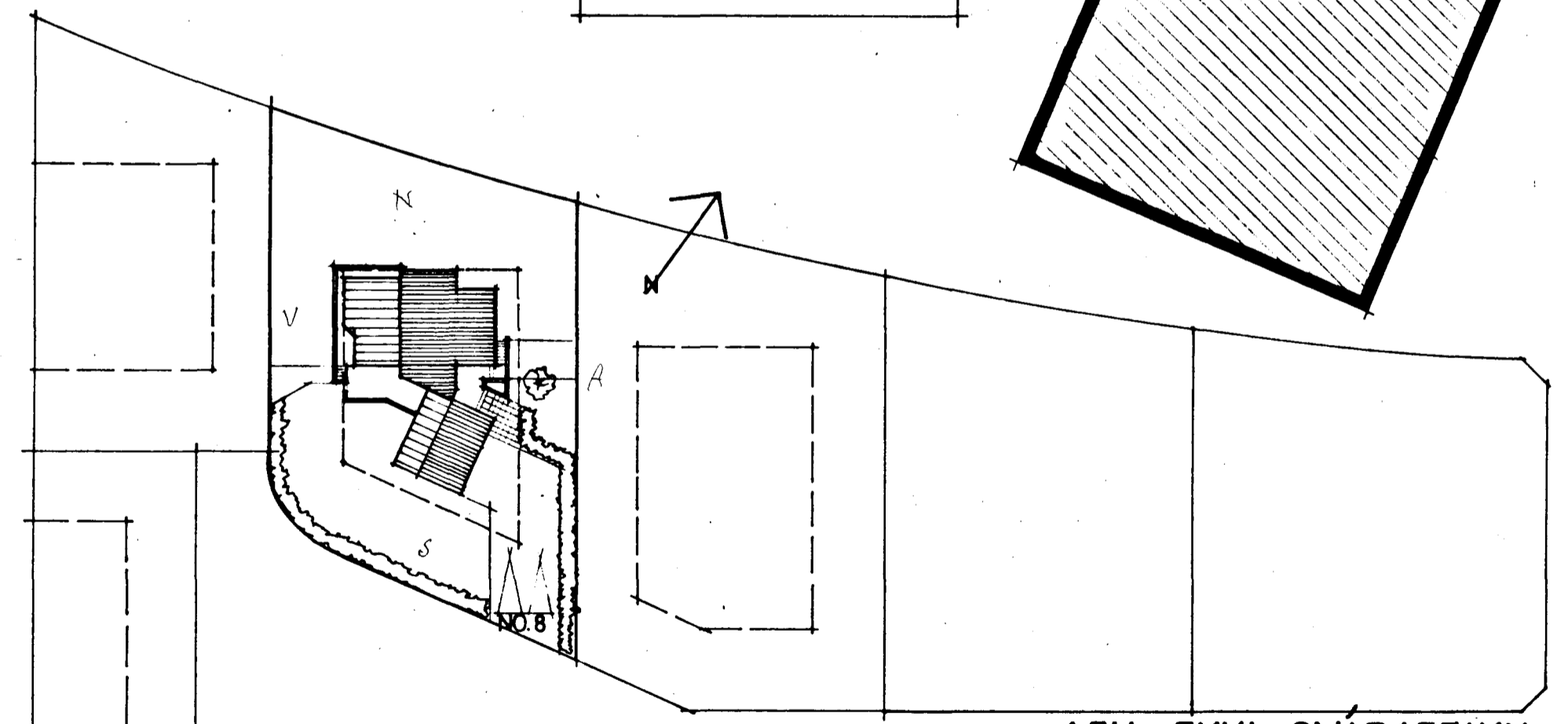
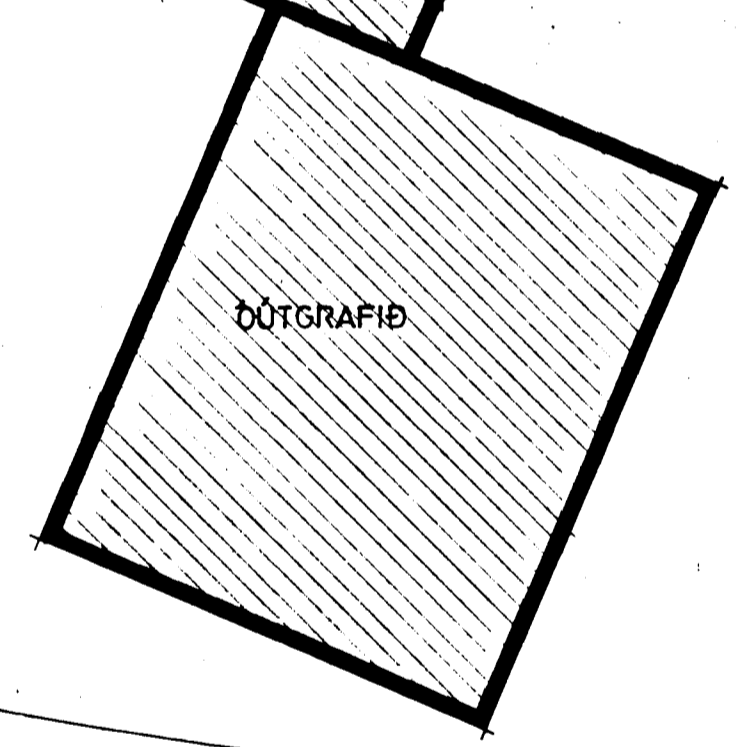


STÆRÐ LÓÐAR:	947.0 m ²
BRÚTÓ STÆRÐ HÚSS:	
EFRI HÆÐ:	103.07 m ² 3345 m ³
NEÐRI HÆÐ:	92.28 m ² 2410 m ³
BÍLGEYMSLA:	52.80 m ² 1690 m ³
ALLS:	24815 m ² 7445 m ³
NÝTINGARHLUTFALL:	0.26



GRUNNMYND NEÐRI HÆÐAR

KÓLNUNARTÖLUR:	
NEÐSTA PLATA	≅ 0.4
ÞAK	≅ 0.3
VEGIÐ MEÐALT. VEGGJA	≅ 1.0



HÁHVAMMUR

ATH. EKKI SMÍÐATEIKN.

AFSTÖÐUMYND 1:500

KVARDI	: 1:100, 1:500
DAGS.	: 13.7.79
VERKNR.	:
TEIKNNR.	:
UNNIÐ	: P.ÖL./Lgr
TEIKNUN SF	
ARKITEKTASTOFA	
FELLSMULA 26	
105 R.	S.82022