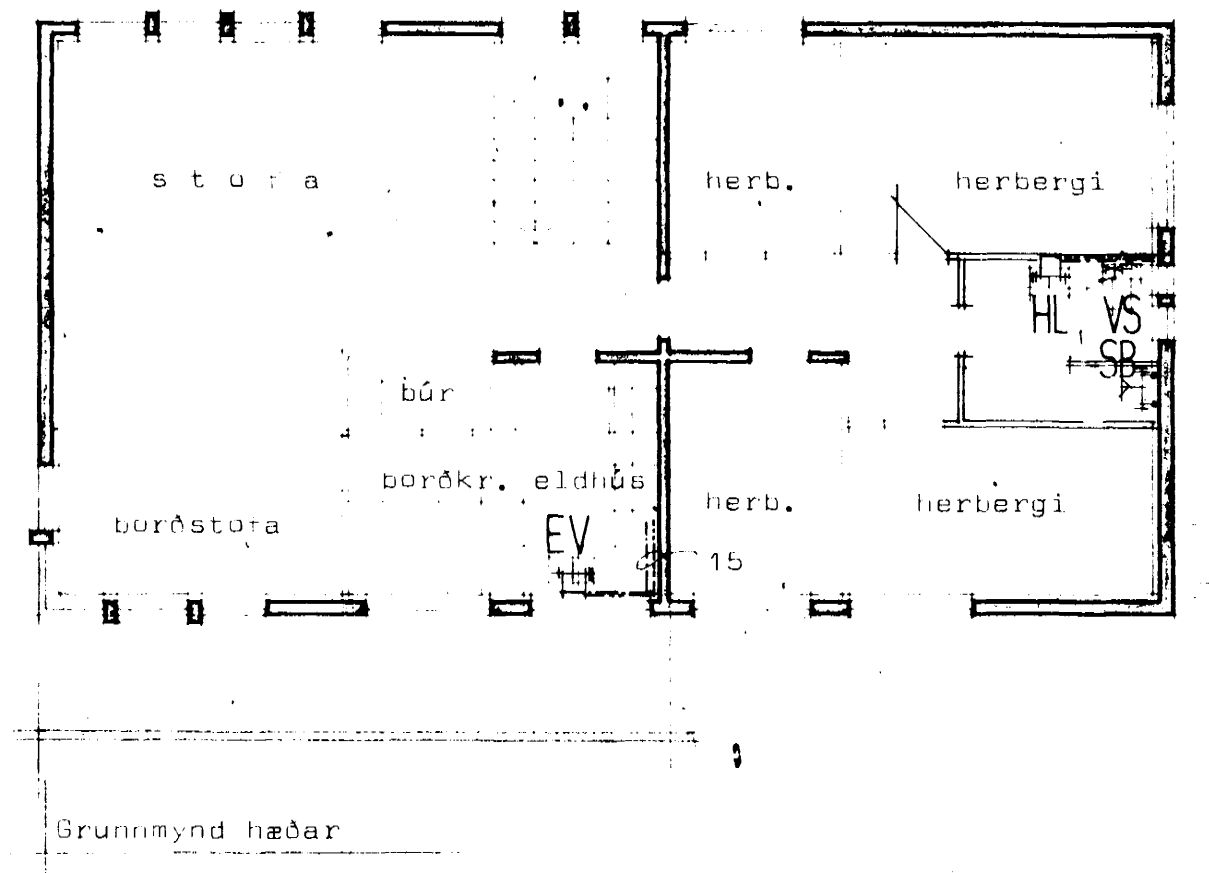
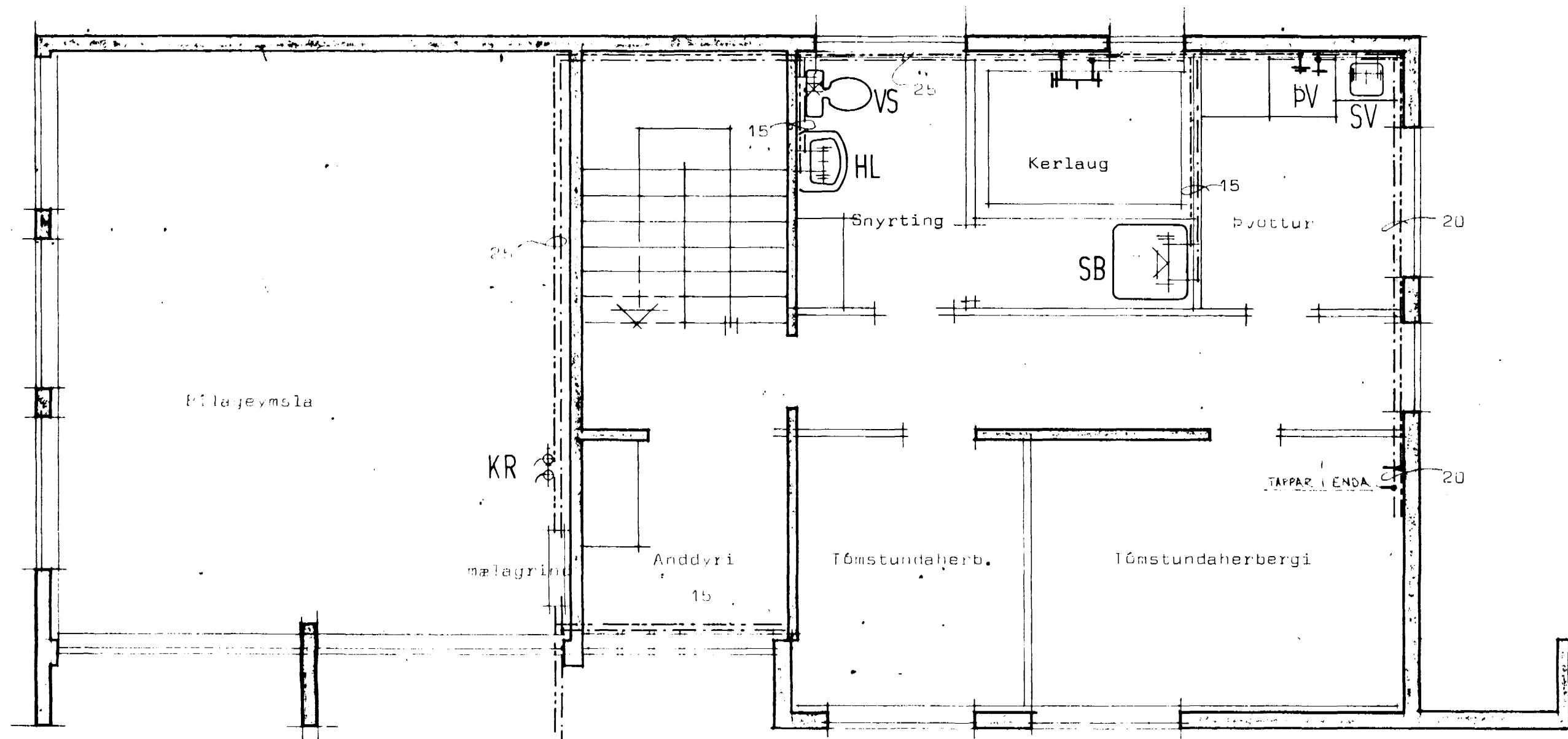
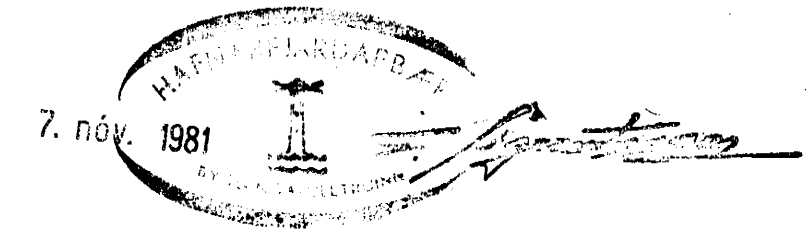
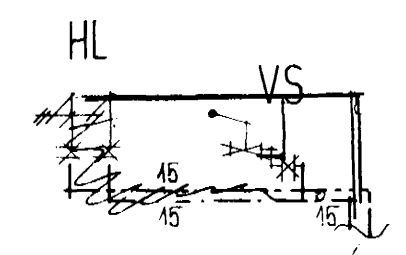
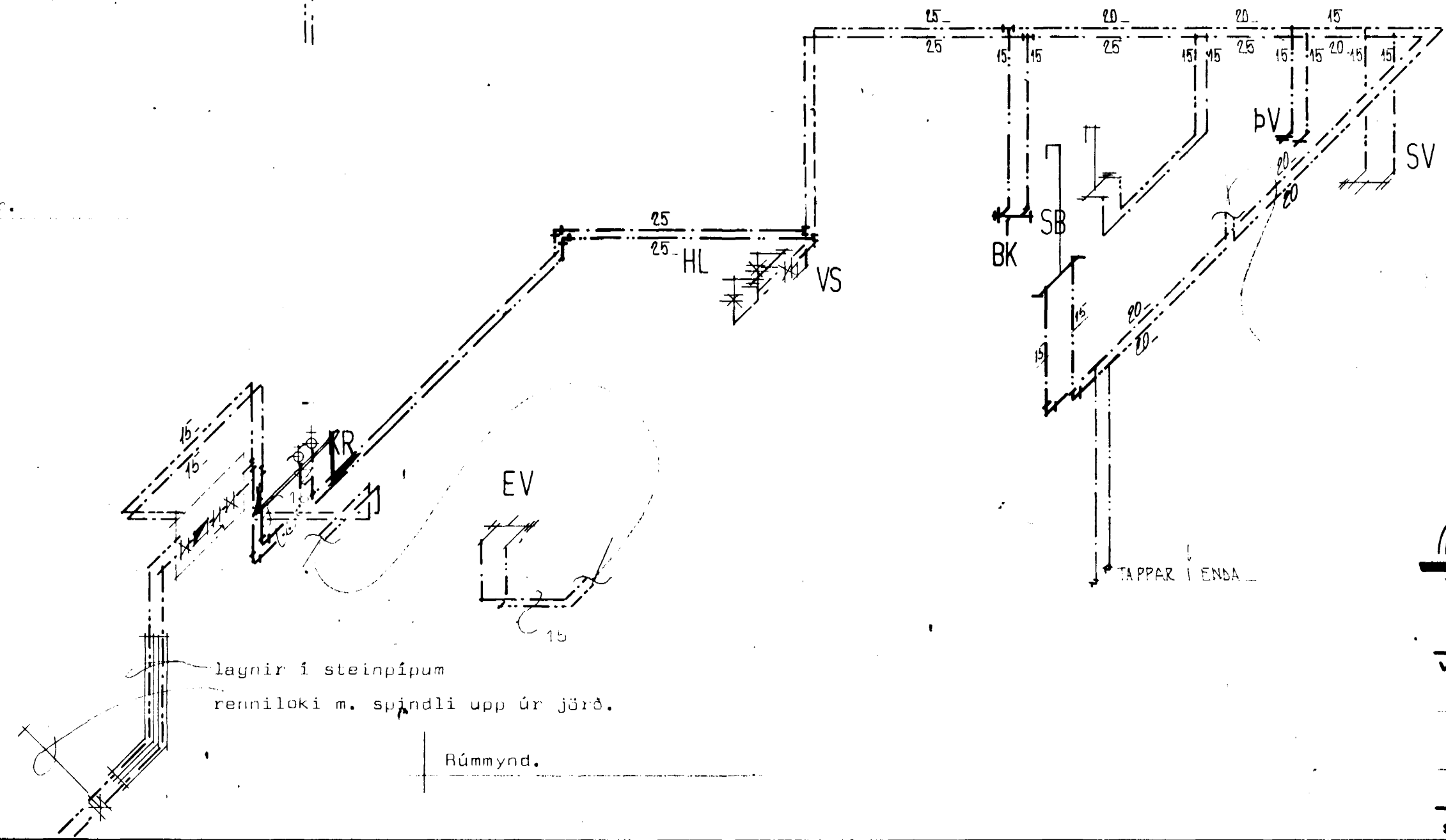


# HÁIHVAMMUR 9

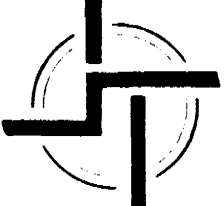


renniloki m. spindil upp úr jörð.

Grundmynd jarðhæðar.



SKýringar sjá blað nr 3.01.



## STAÐALHÚS

TEIKNISTOFA SIDUMÓLA 31 SIMI

<b>VERKEFNI</b> Neysluvatnslagnir Háihvammur 9 Hafnarfirði	<b>DAGS.</b> 1980 <b>MKV.</b> 1:100 1:50 <b>BR.</b> 12.11.80 <b>BLAD NR.</b> 1.1 3.01	<b>VERK NR</b> <span style="font-size: 2em; font-weight: bold;">H3</span>
_____ SIGURDUR GUDMUNDSSON      SIGURDUR P. KRISTJÁNSSON      FTFI		