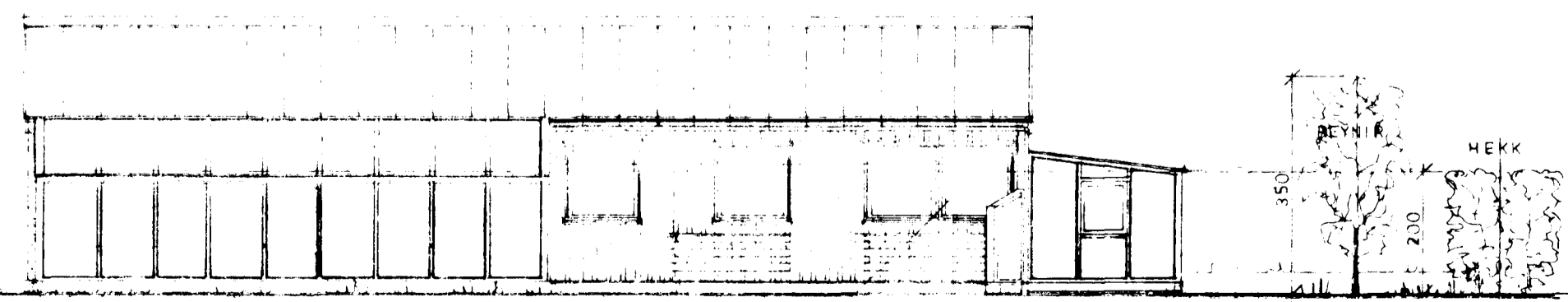
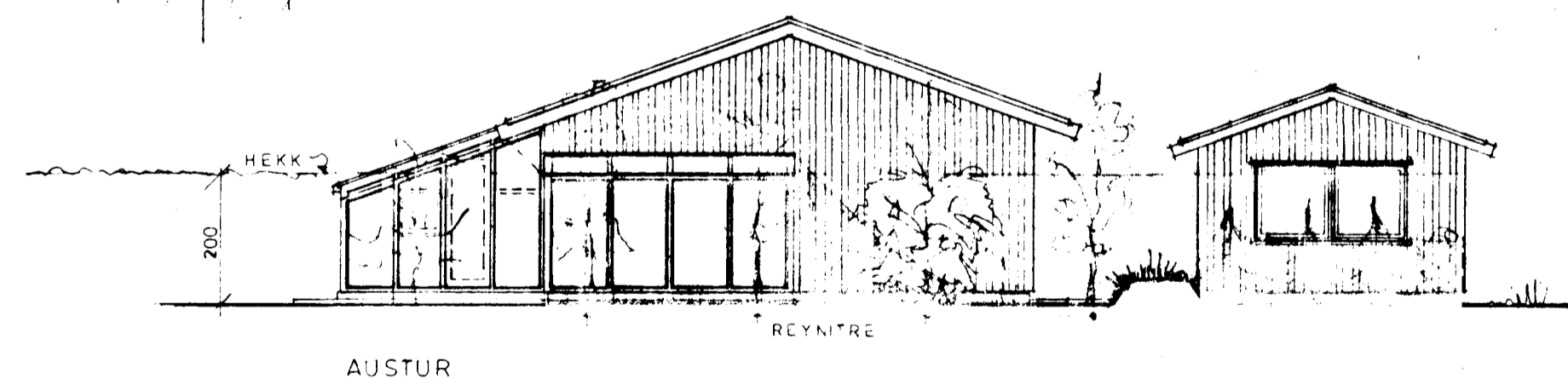
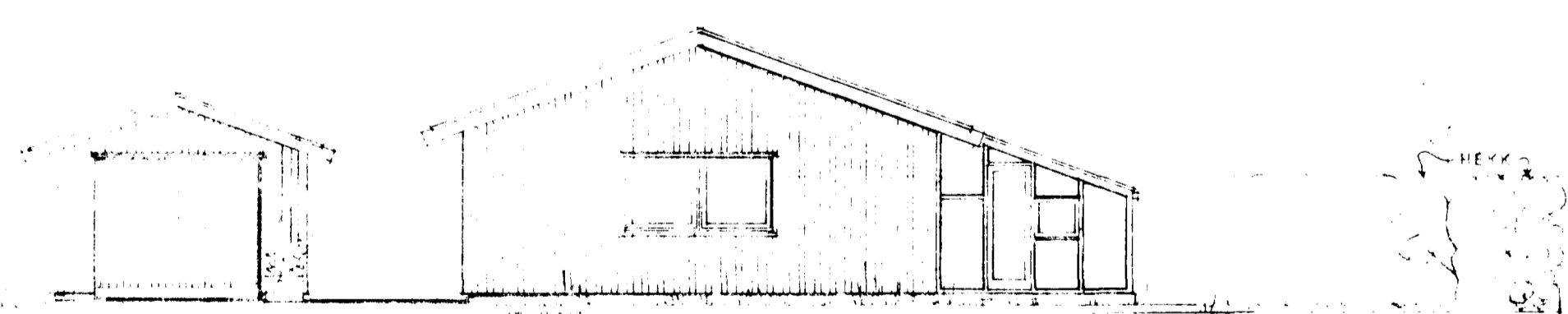
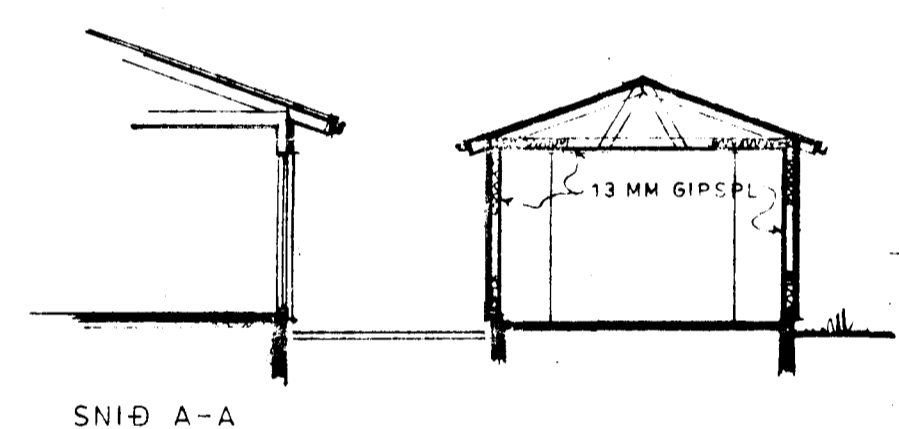
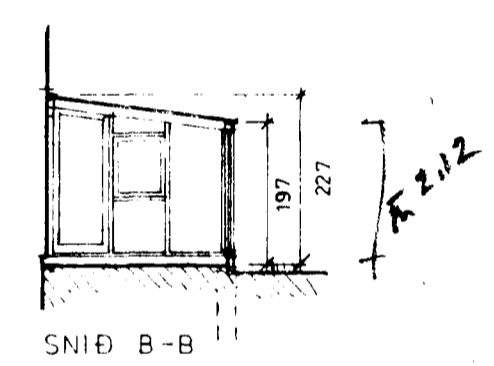
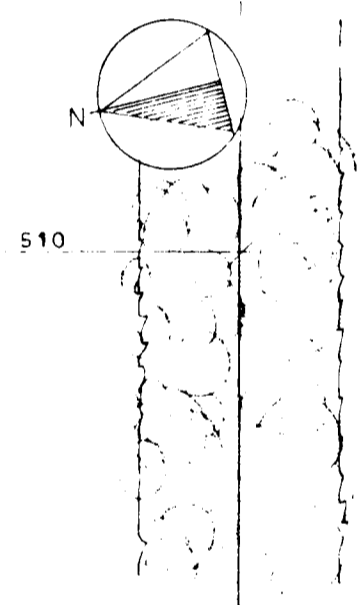
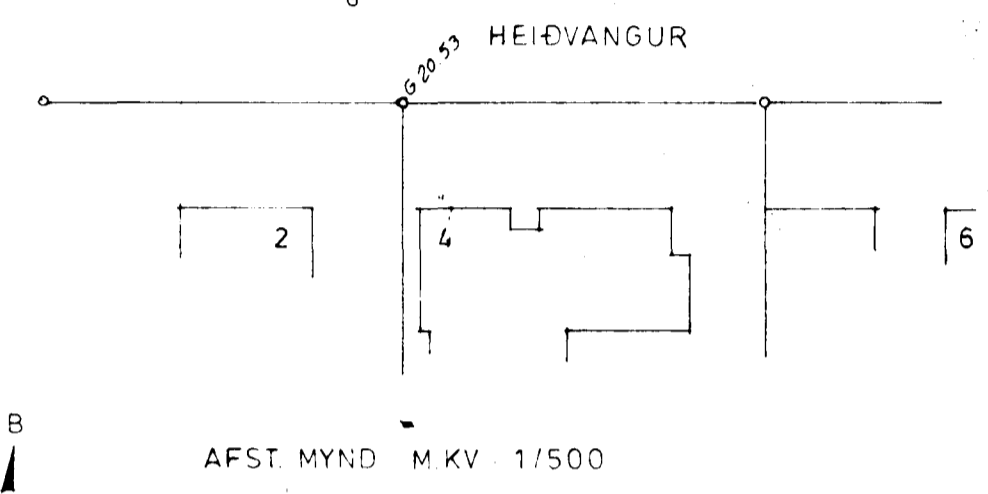
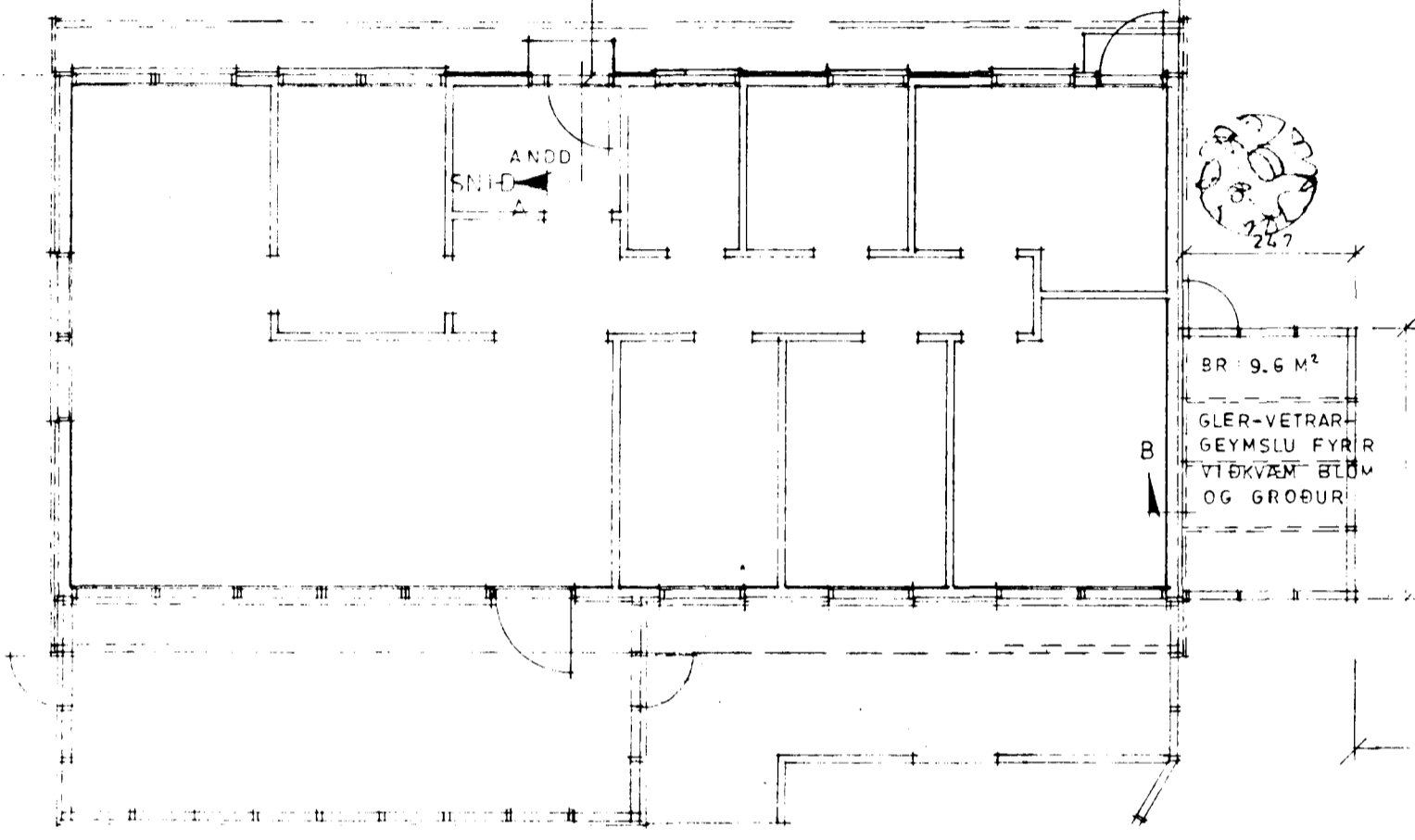
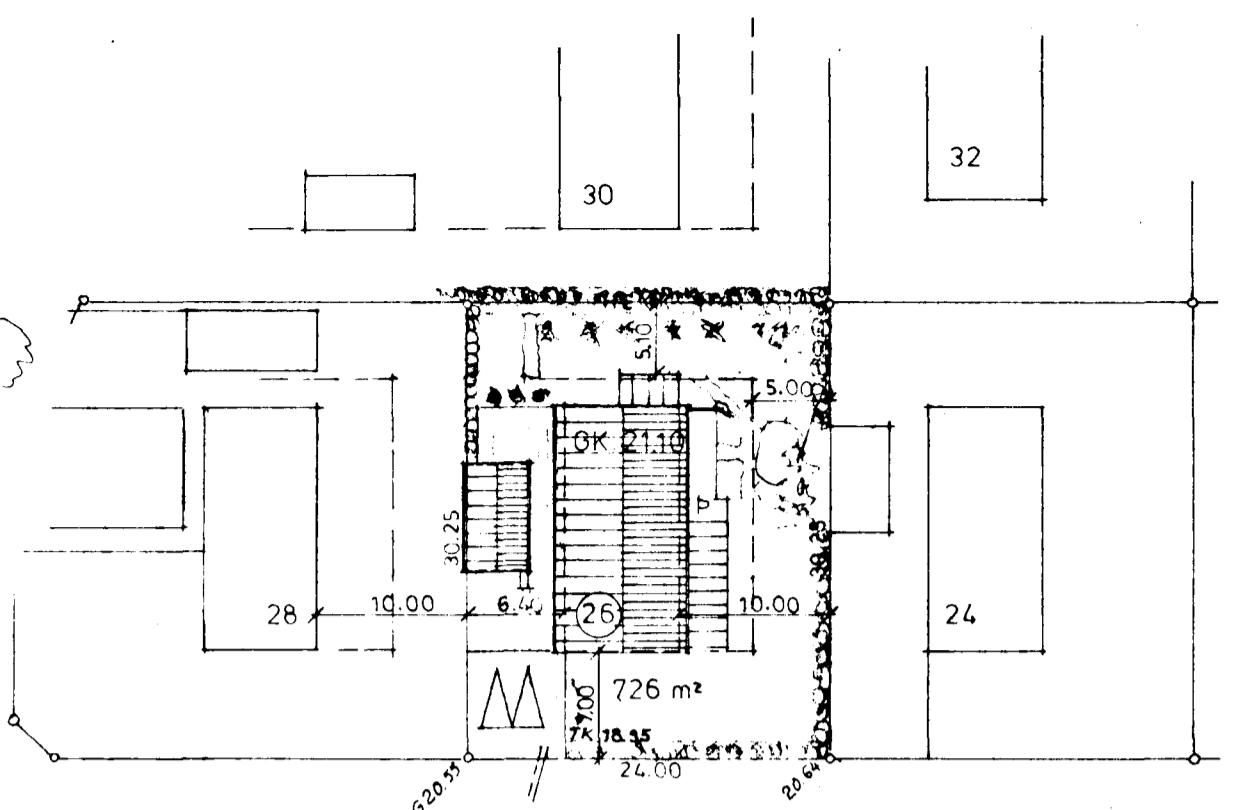
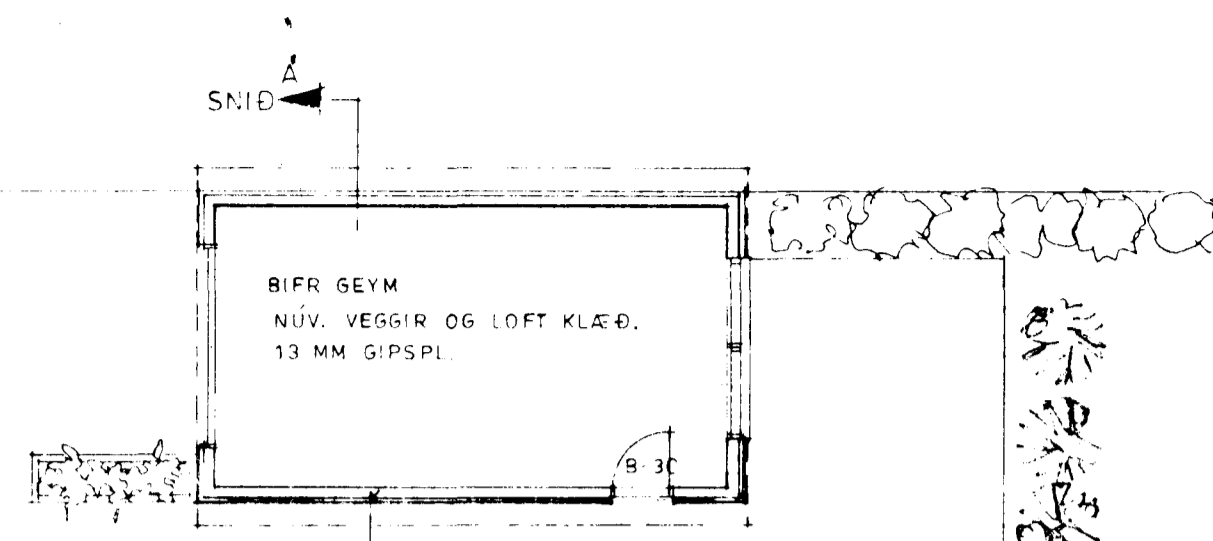


Samþykkt á fundi bygginga-  
nefndar þ. 21.7 1993  
BYGGINGAÞULLTRÖNN  
Í HAFNARFIRÐI  
*Sigurður Halldór*

HEIÐVANGUR 26



	FL MÁL	RÚMMÁL
GLER-VETRARGEYM.	9.6 M <sup>2</sup>	20.0 M <sup>3</sup>
NÚV. PUSS MÍGL.SK.	148.2 M <sup>2</sup>	472.0 M <sup>3</sup>
SAMT	157.8 M <sup>2</sup>	492.0 M <sup>3</sup>
BÍFR GEYM	29.5 M <sup>2</sup>	84.0 M <sup>3</sup>
LOÐ	726 M <sup>2</sup>	
NÝT HL.FALL:	0.26	

DRÖG : 8-7-93  
ÞREYTT : 1-1-93 (GLER-VETRARGEYM, UPPHENT OG TEIKNAD.)

DAGS.: 7-4-1992 • GRUNNMYND, SNÍÐ, AFST. MYND OG ÚTLIT • M.KV.: 1/100 OG 1/500 • HEIÐVANGUR 26 • HAFNARFIRÐI

LILA  
TEIKNISTOFAN  
Rauðfjörðvegur 56, 210 Hafnarfirði  
*Ólafur Þórðarson*  
ARKT. 1