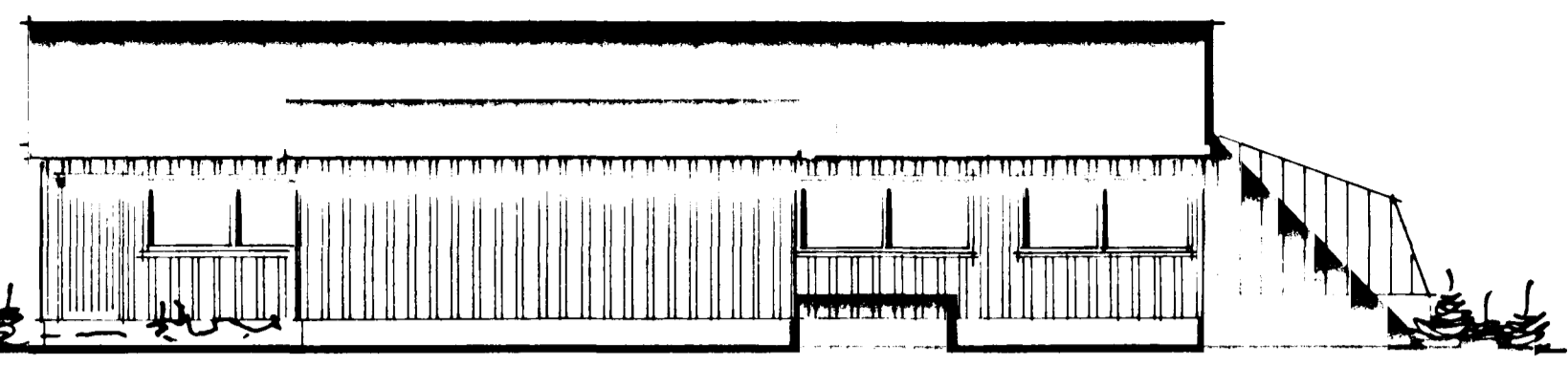
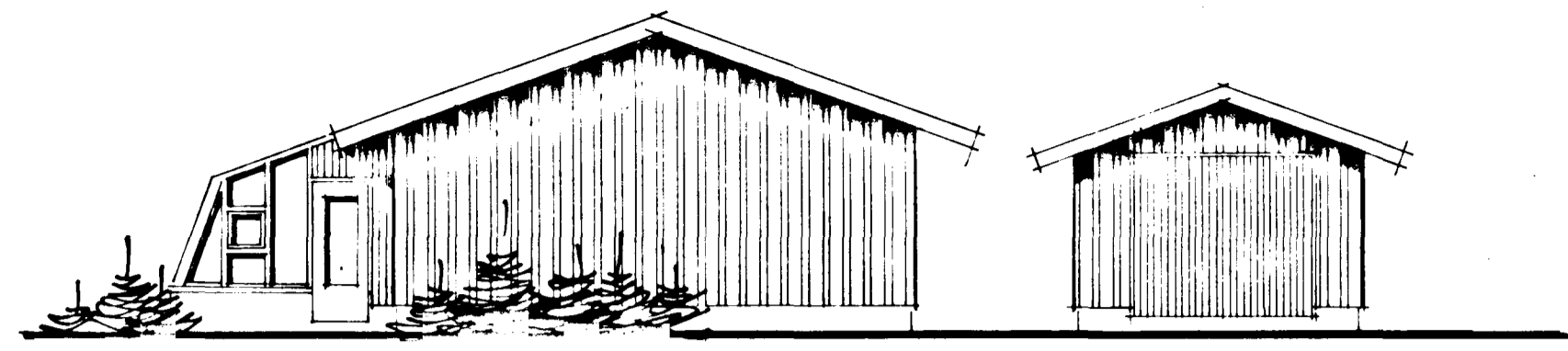


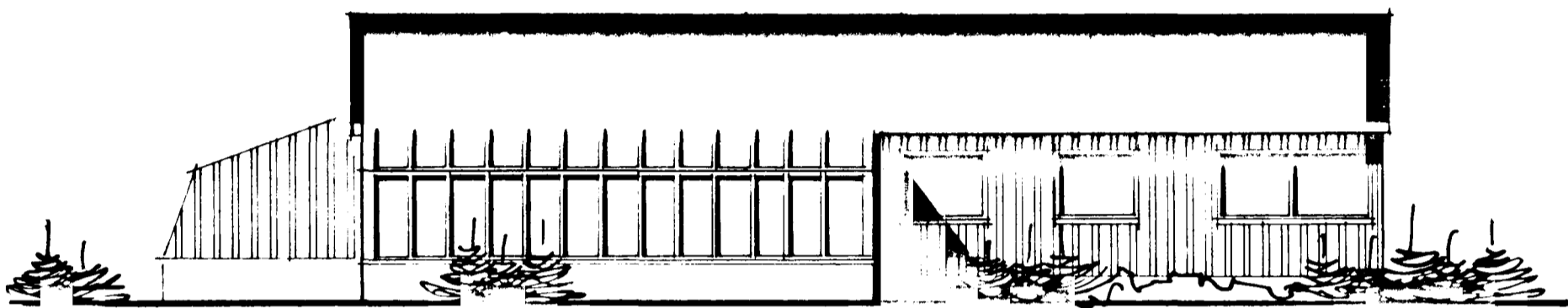
Sambýkt á fundi bygginga-  
 málnings 17/7 1985  
 BYGGI: TATULLÖNN  
 Í HAFNARFIRÐI  
 Sveinbjörn Sveinbjörnsson



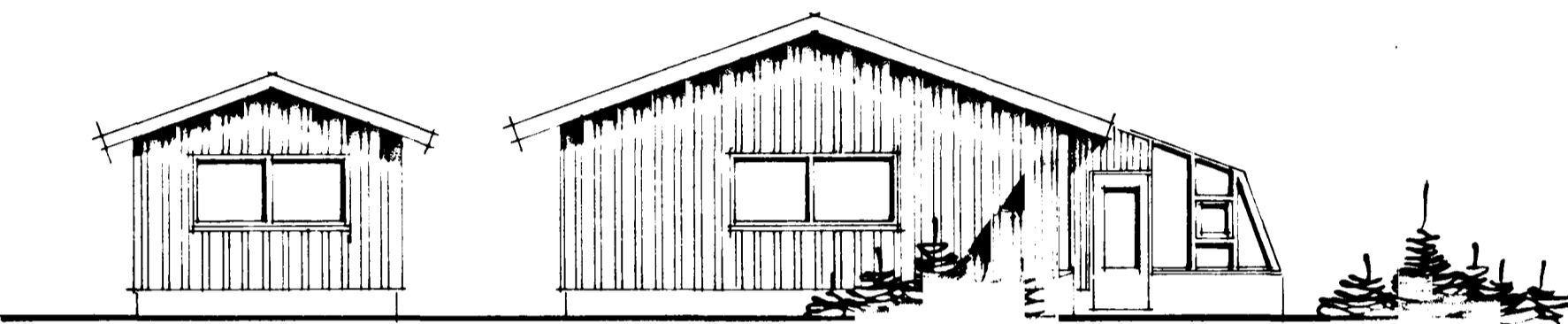
NORÐURHLIÐ



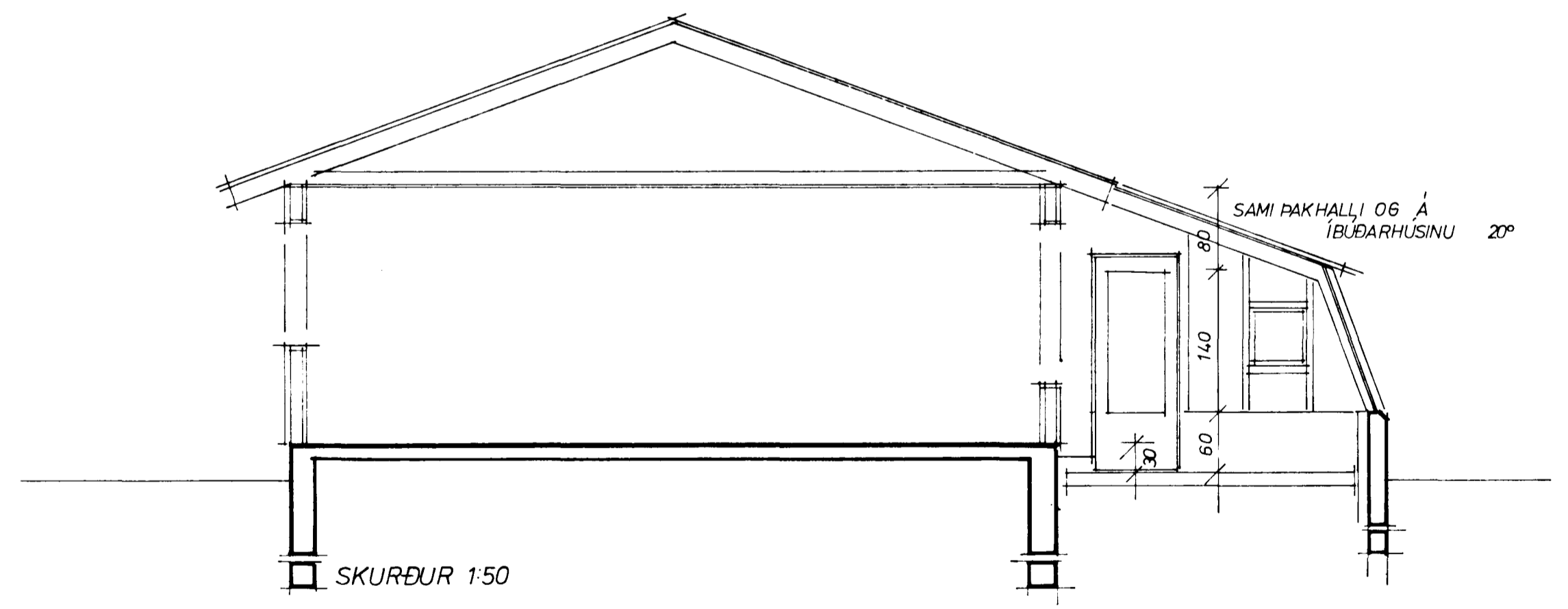
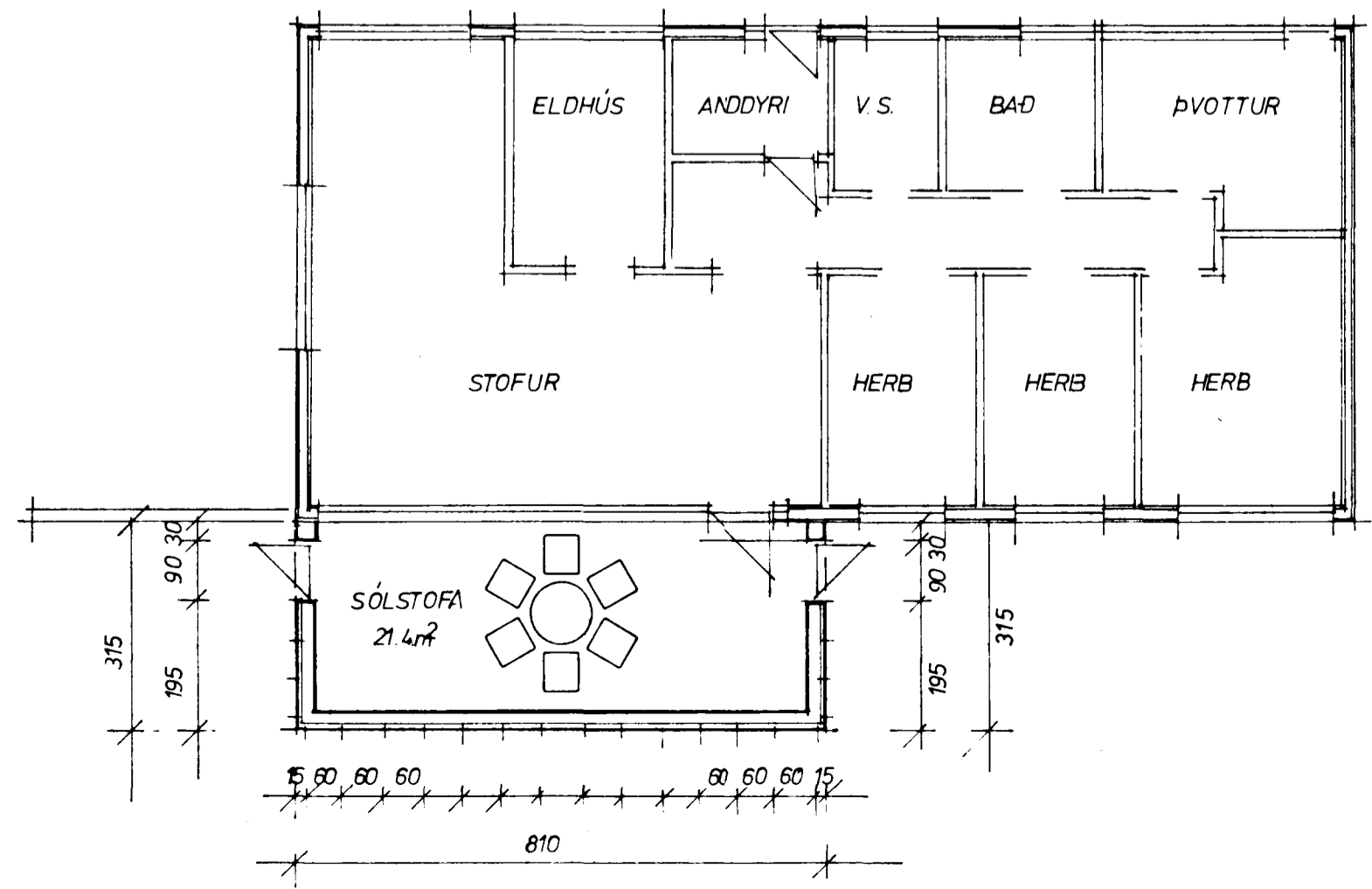
AUSTURHLIÐ



SUÐURHLIÐ



VESTURHLIÐ



SÓLSTOFA 25.5 m<sup>2</sup> 54.6 m<sup>3</sup>  
 SÖKKULL: STEYPTUR  
 VEGGIR: TIMBURGRIND OG TVÖF GLER  
 ÞAK: -- OG TVÖF PLEXIGLER

HEIÐVANGUR 26, HAFNARFIRÐI  
 SÓLSTOFA VIÐ ÍBÚÐARHÚSIÐ

Flatarmál: 3,15 x 8,1 = 25,5 m<sup>2</sup>  
 Rúmmál: 25,5 x 0,6 = 15,3 m<sup>3</sup>  
 8,1 x 1/2 (3,15 + 2,65) x 1,1 = 32,9 "  
 2,65 x 8,1 x 0,4 = 8,6 "  
 Σ = 57 m<sup>3</sup>

GRUNNMYD SKURÐUR ÚTLIT  
 1:100, 150 14.7.1985

MHÓL

MAGNÚS H. ÓLAFSSON ARKITEKT FAÍ - TEIKNISTOFA -  
 SKÓLABRAUT 21, AKRANESI 93-2210