

Samþykkt á fundi bygginga-
nefndar þ. / 14 1972

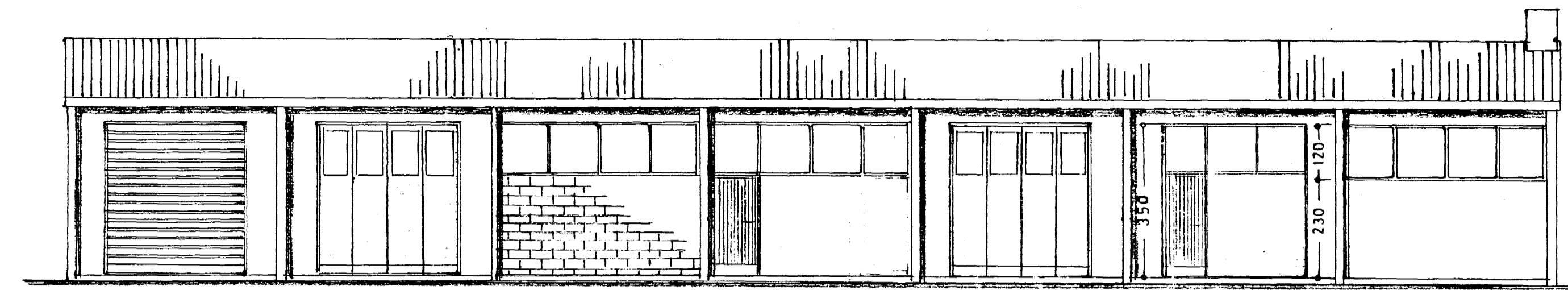
BYGGINGAFULLTRÚINN
Í HAFNARFIRDI

HELLUHRAUN NR 4

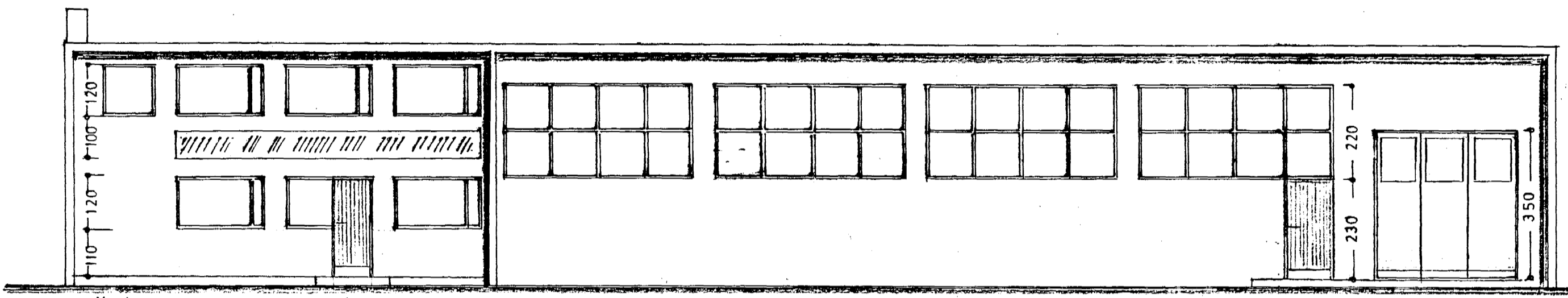
ÚTLIT } 1:100
GRUNNMYNDIR }
SNIÐ }
AFSTÖÐUMYND 1:2000

Hafnarfirði des 1971
Sigurðsson

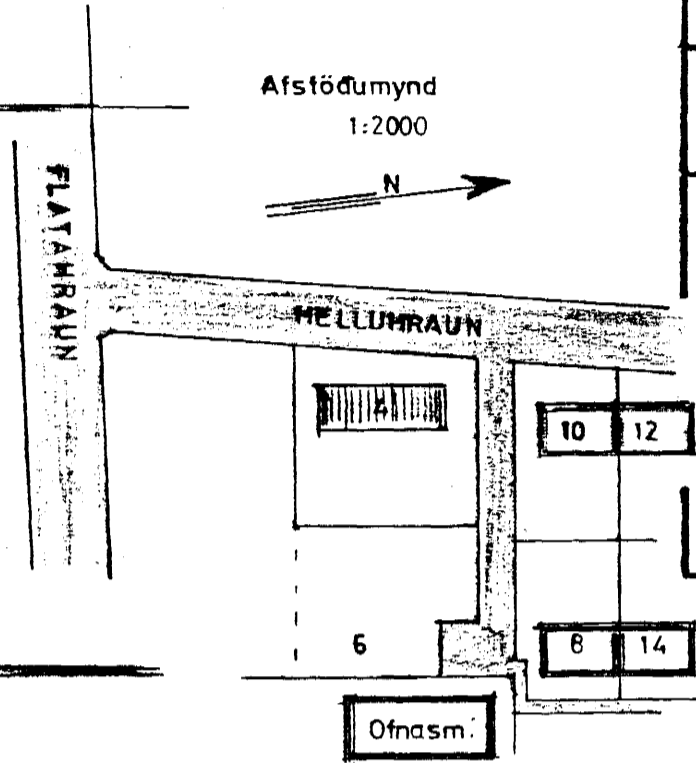
STÆRD HÚSS : 4140 m² 1.9870 m²



Austur

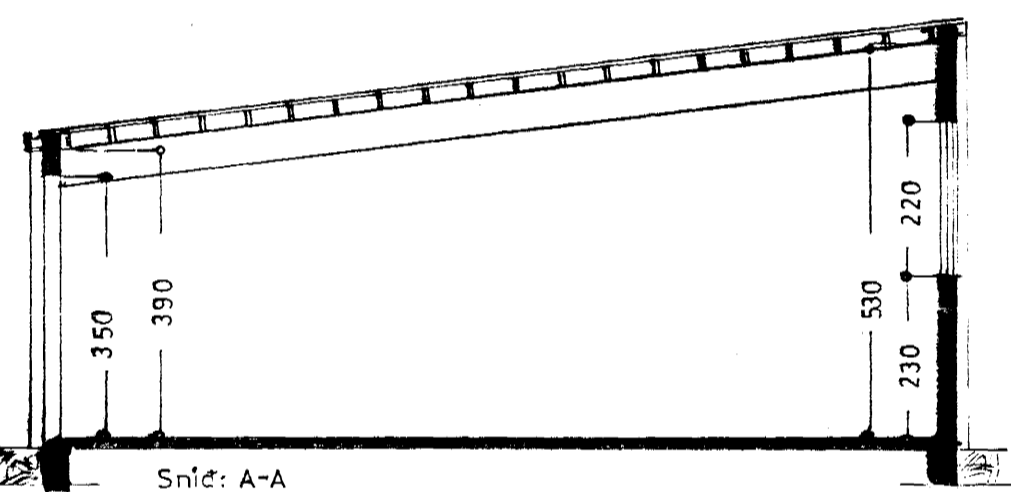


Vestur

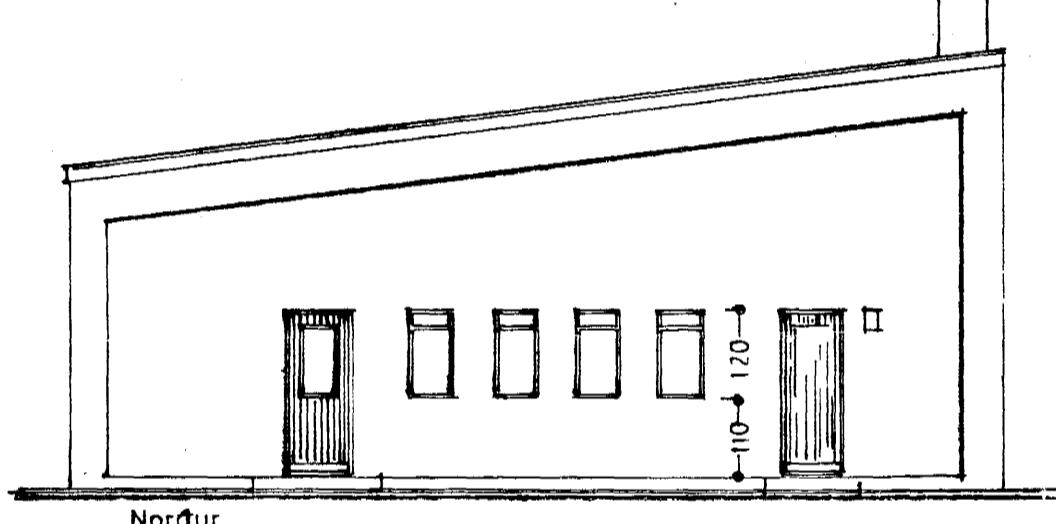


Afstöðumynd
1:2000

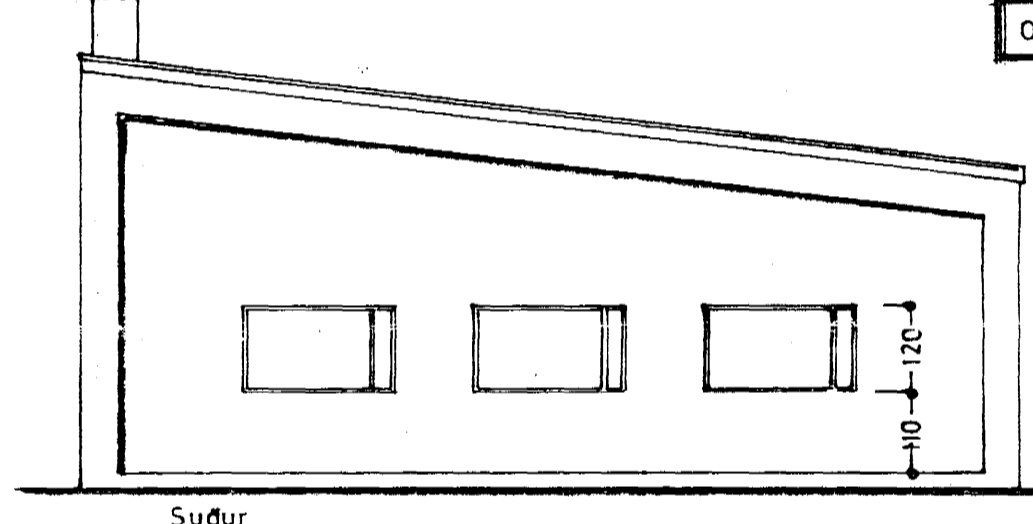
Ofnasm.



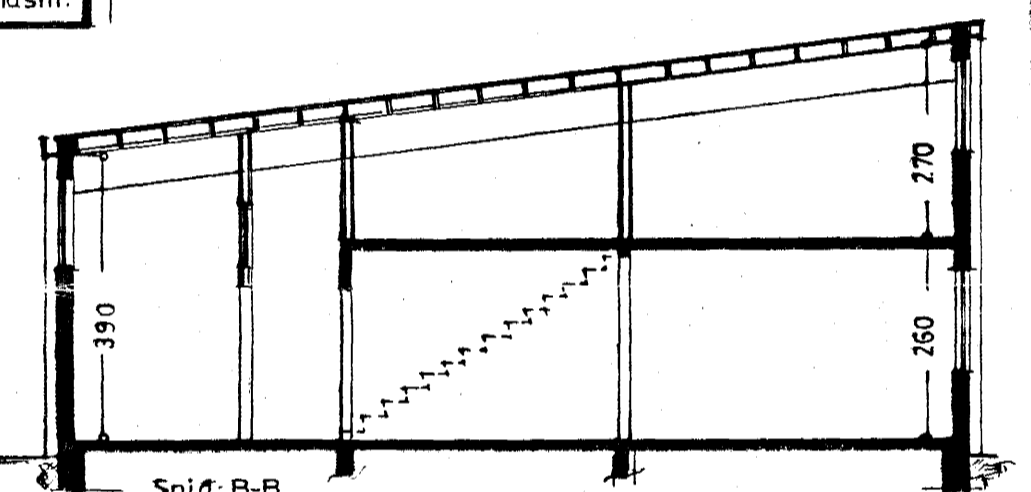
Snið: A-A



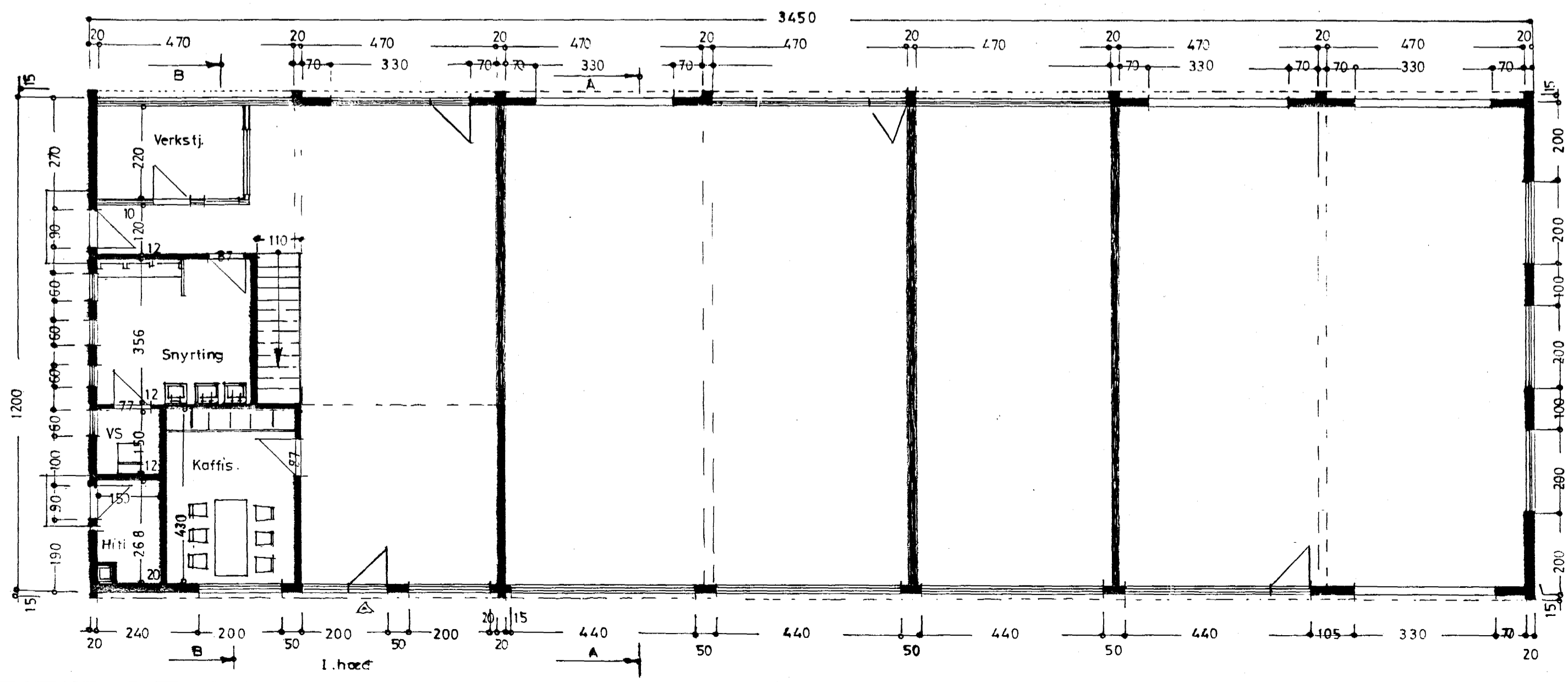
Norður



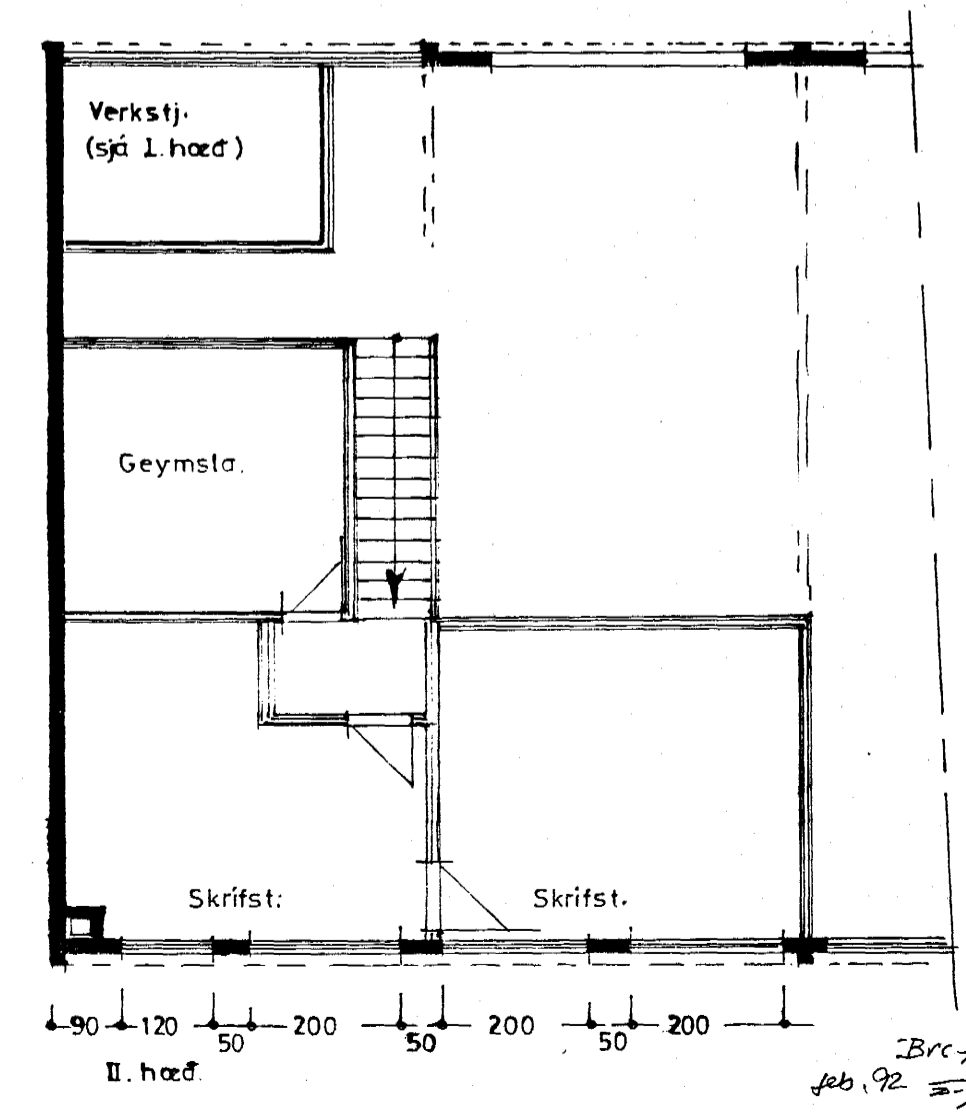
Suður



Snið: B-B



I. hæð



II. hæð

Þreyting á húsi
feb. 92
Sigurðsson