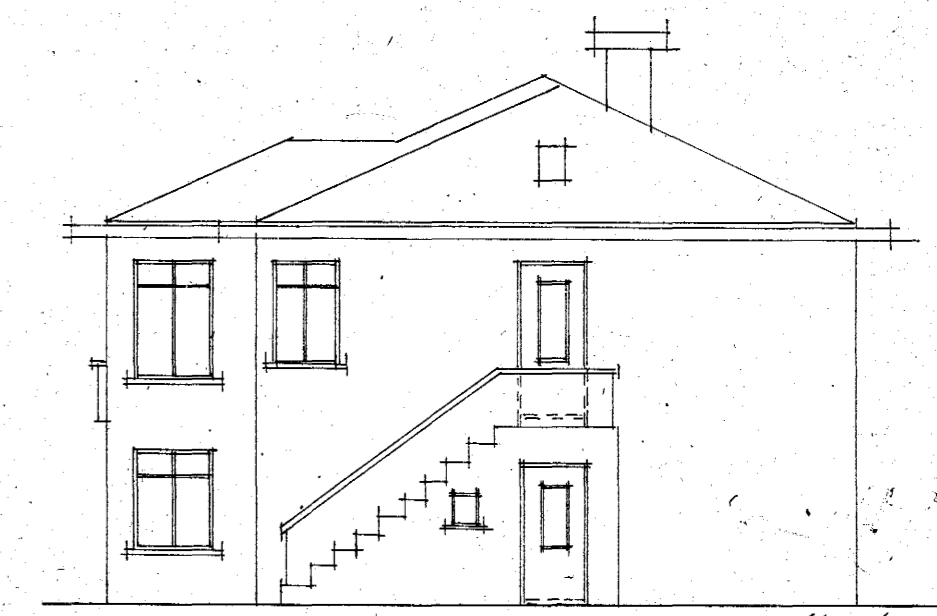


Hús Kristjáns Sigurðssonar við Sundlaugarveg í Hafnarfirði

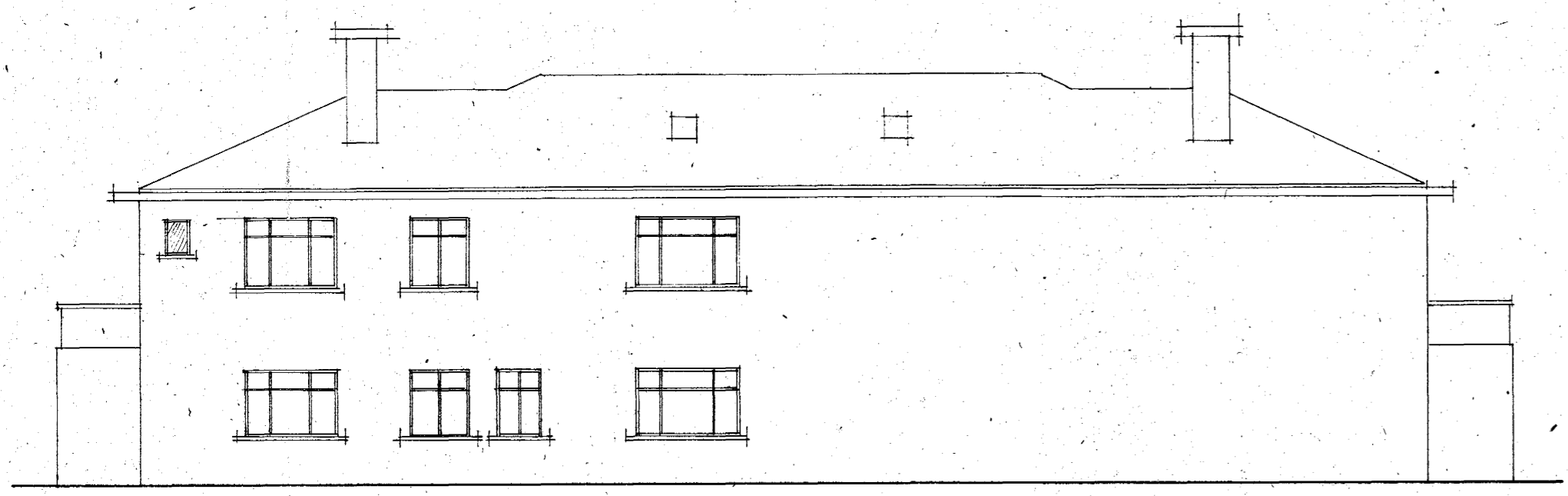
SP N^o 19 46

120
200

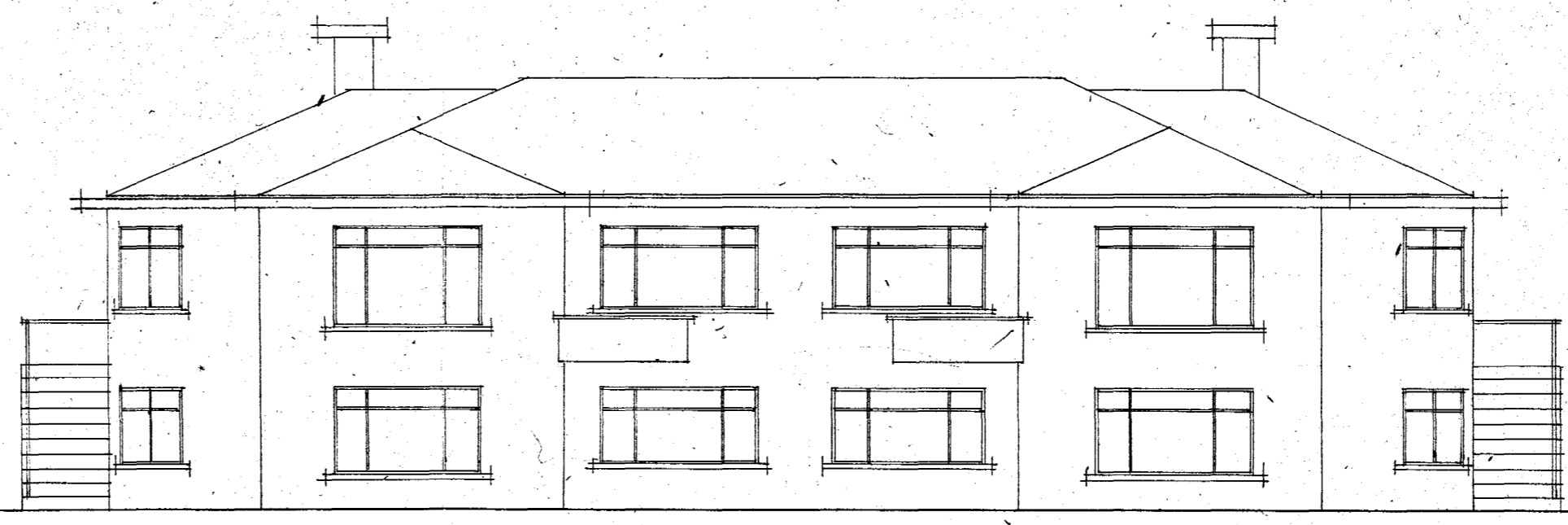
160
180



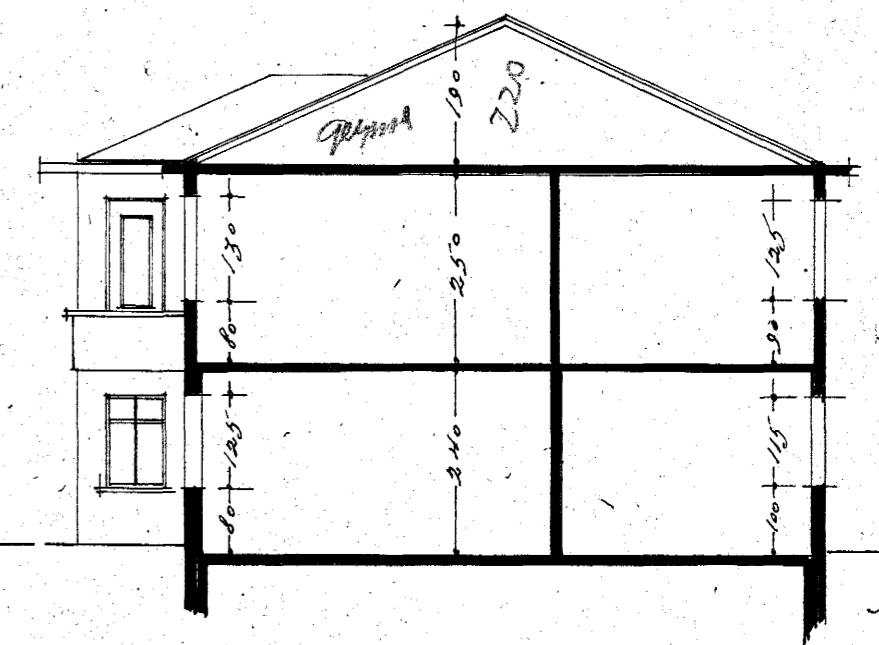
Nordur og Sudur -



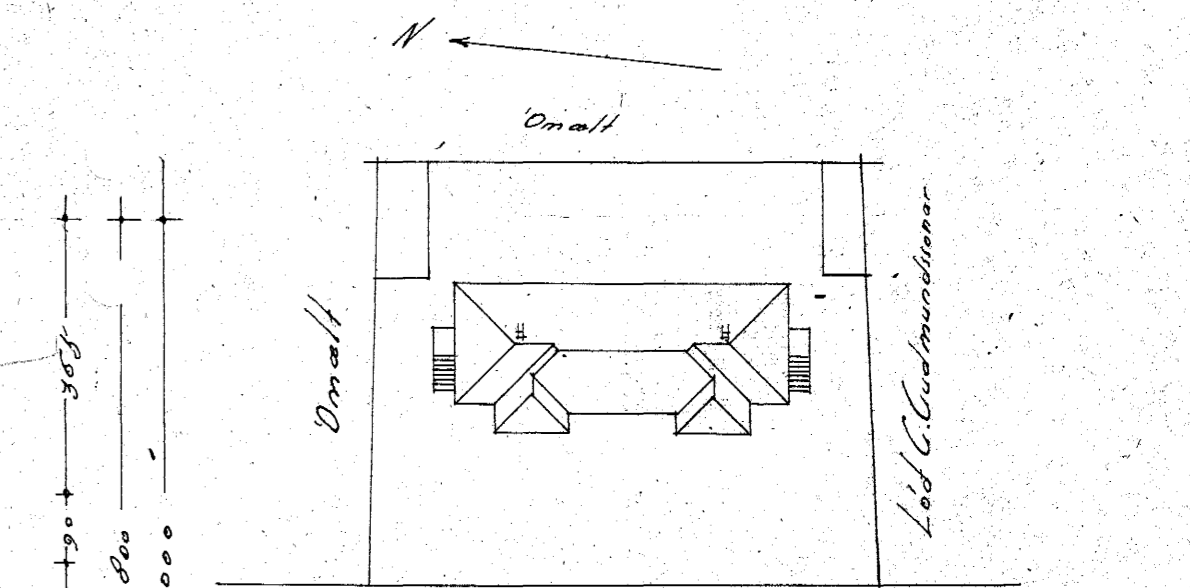
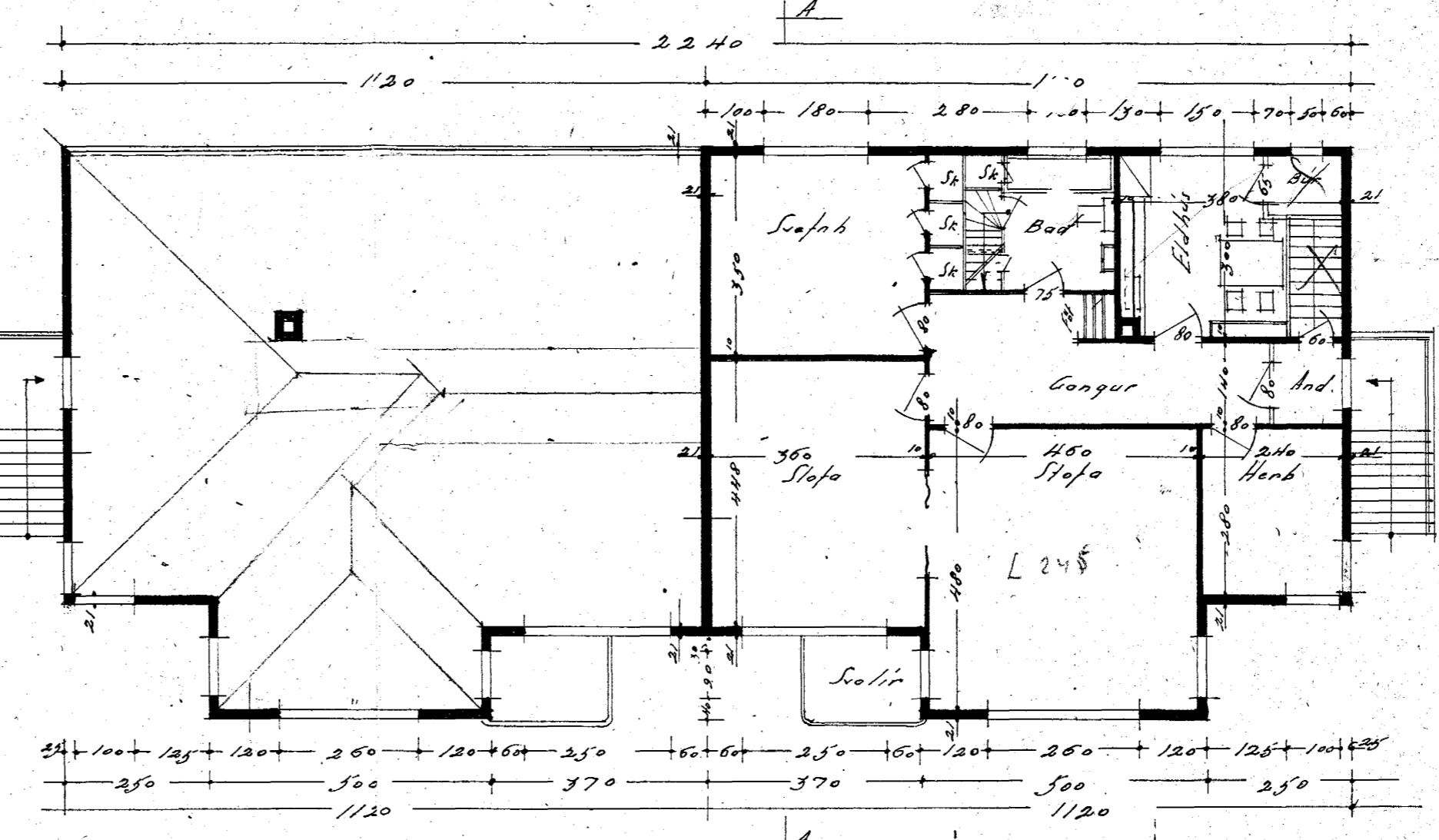
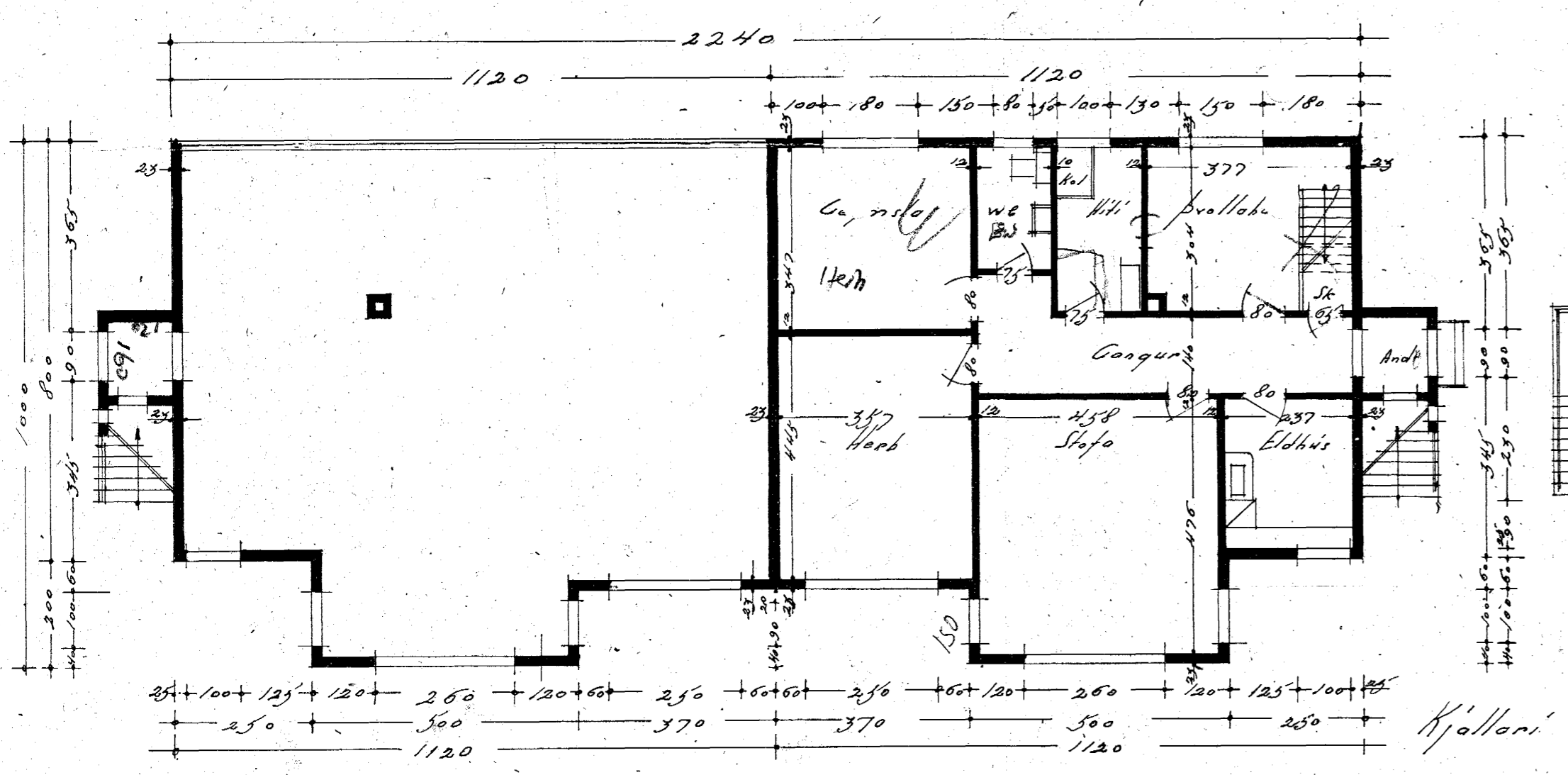
Austur



Vestur



Skundur A-A



Sundlaugarvegur

Mjöláumynd M. 1:500

HERJÓLFSGATA 12

Hádin

Hafnarfirði í ágúst 1946
Lodd Gudmundsson