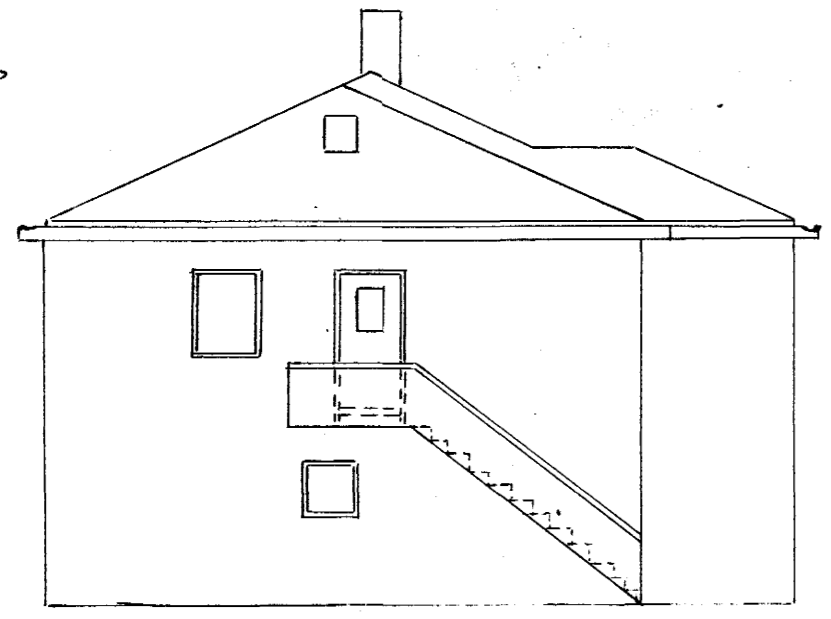


EFRI HÆÐ 58%
 NEDRI - - 32%
 ÞVOTTAHÚS 10%

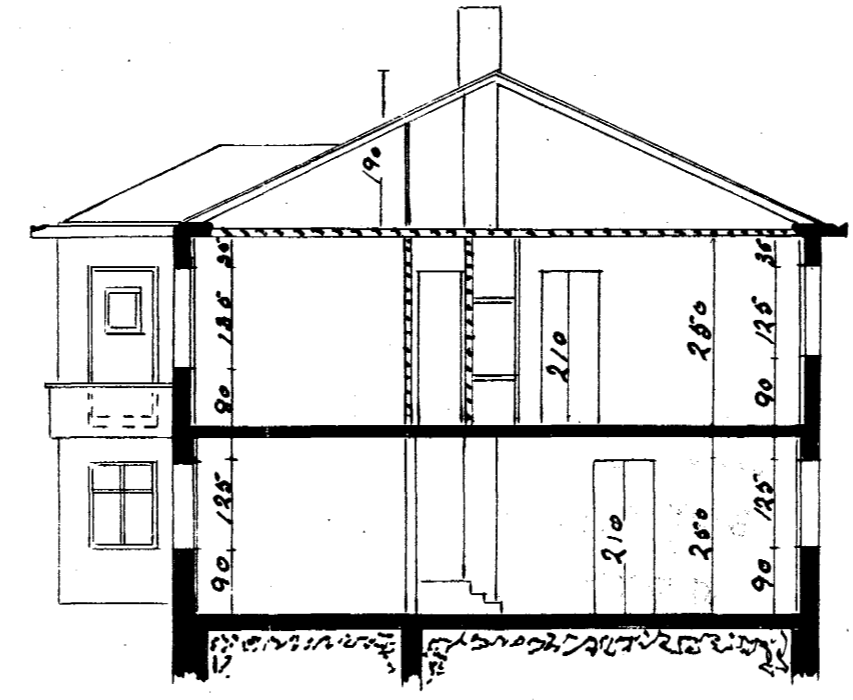
 100%

Hús Bjarna Björnssonar við Herjólfsgötu 18 Sundlaugarveg i Hafnarfirði

Samþykkt á fundi bygginga-
 nefndar þ. 21. 6. 1960
 BYGGINGAFULLTRÚINN
 (HAFNARFIRÐI)

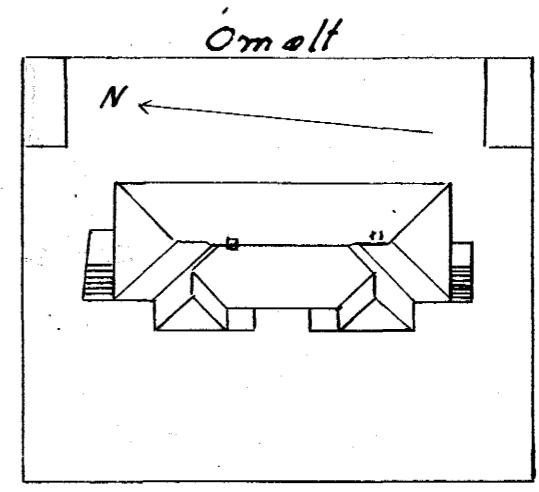


M 1:100



Sudurlhati hússins, lílits og afstöðumynd
 teiknadur af Sig Guðmunds
 Hafnarfirði 1946

HÚSASMÍÐAMEISTARI
 Bjarna Björnsson

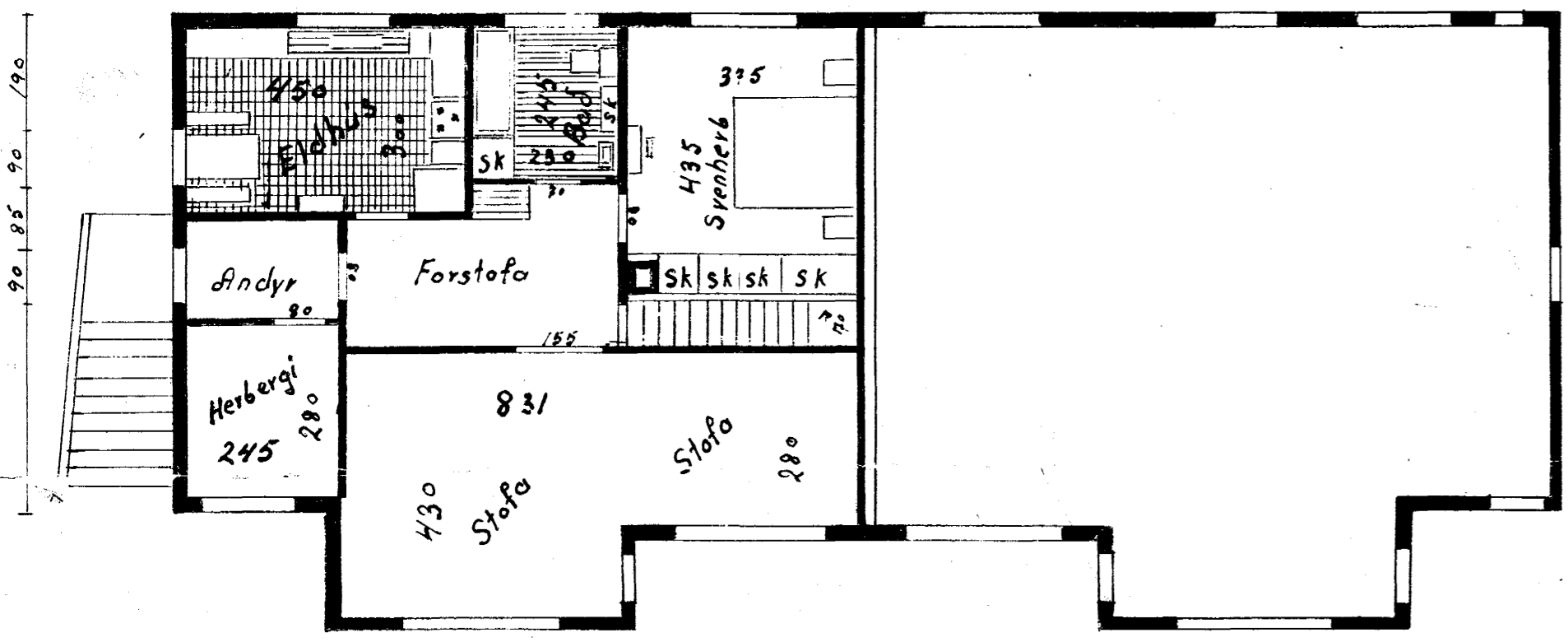


Skurður A-A

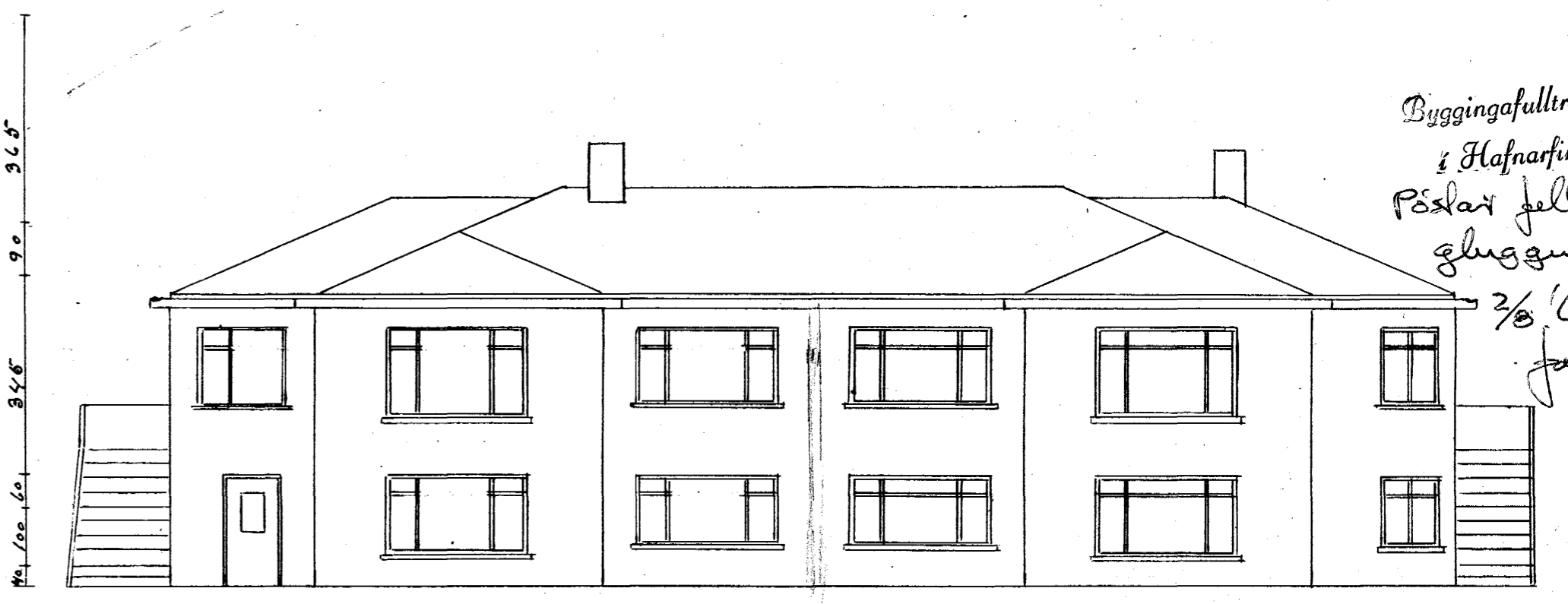
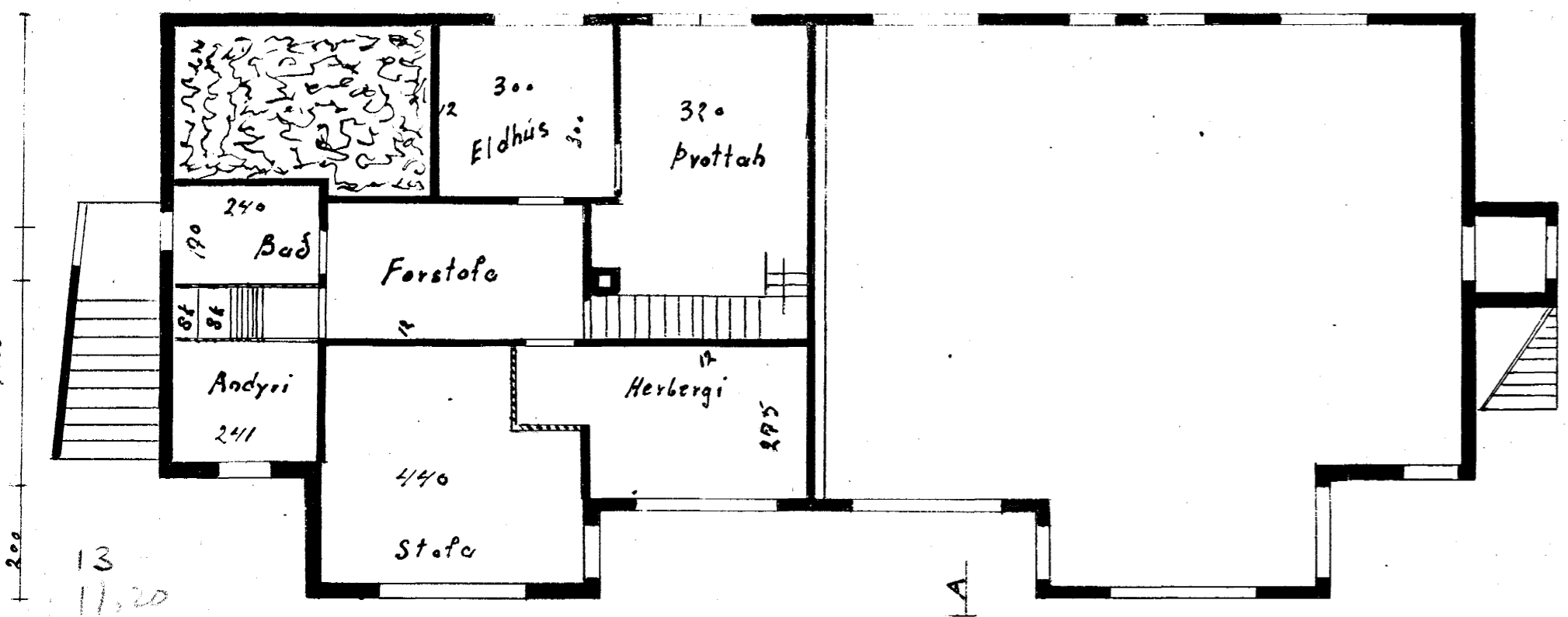
Loft og innveggir á efri hæð ekki steypt

Sundlaugarvegur
 afstöðumynd M. 1:500

150 185 150 150 190 200 190 280 100 180 150 90 60 60



150 115 110 100 100 130 150 90 50 100 130 150 180



Byggingafulltrúinn
 í Hafnarfirði
 Þóskar feldis úr
 gluggum
 2/8 '63
 Jón Þorgeirsson

13
 11,20
 11,20
 35,40
 100 90 60 135 250 125 60 250 60
 250 500 370 370 500 250
 1120 1120

965
 90
 345
 100 60