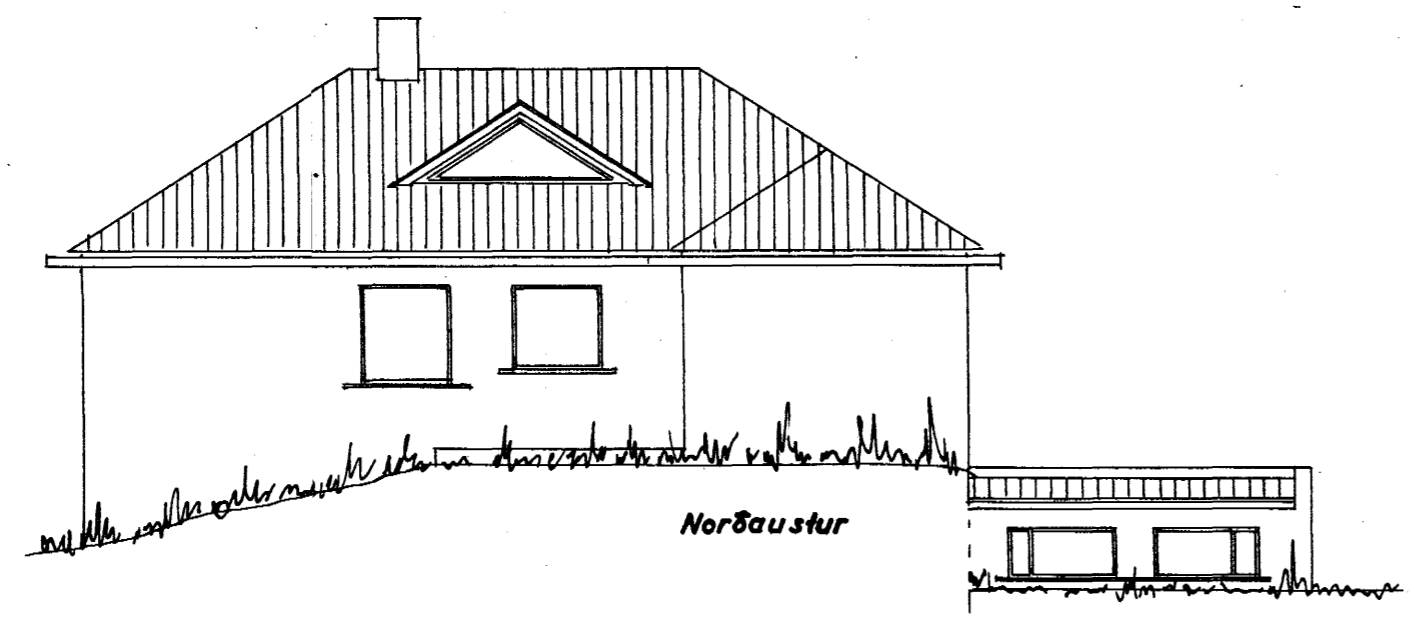


Samþykkt á fundi bygginga-  
nefndar þ. 13.12.1965

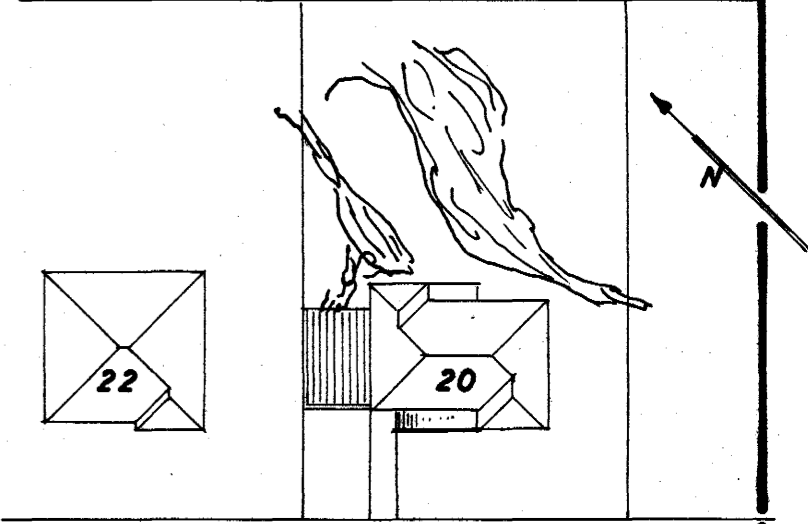
BYGGINGAFULLTRÚINN  
Í HAFNARFIRÐI

*Þorvaldur Thorgeirsson*

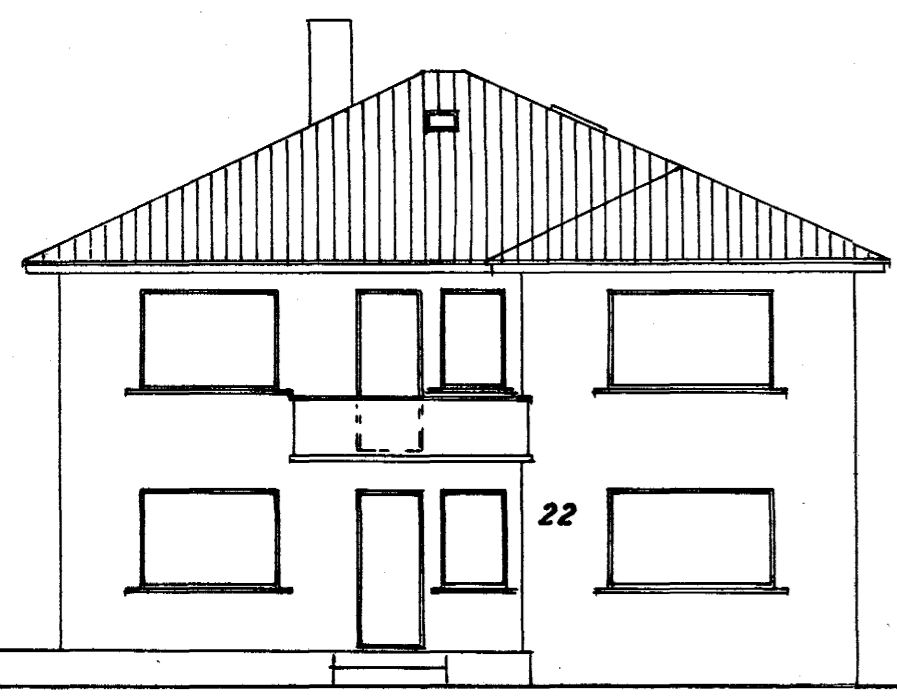


Norðaustur

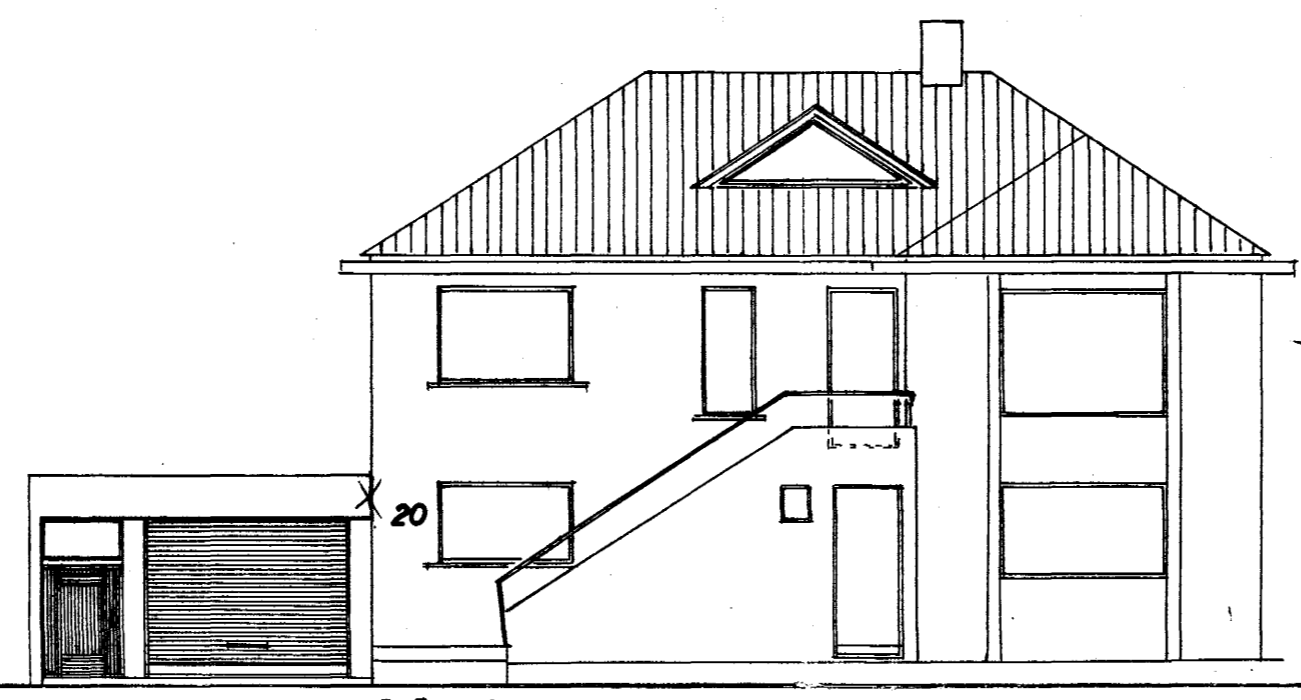
AFSTÖÐUMYND  
1:500



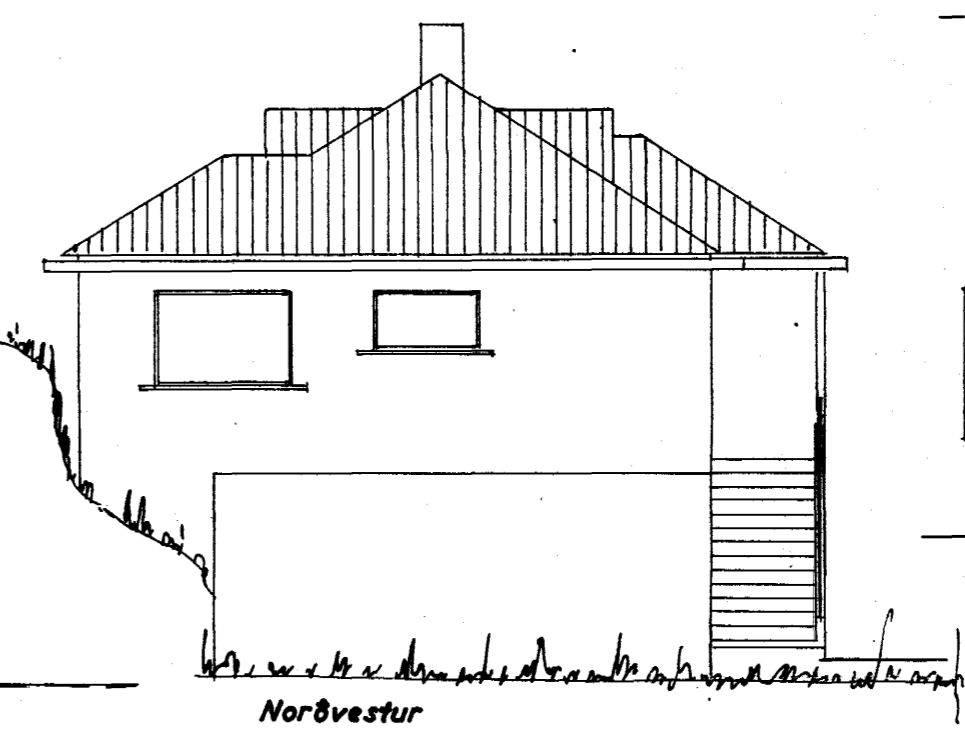
Herjólfsgrata



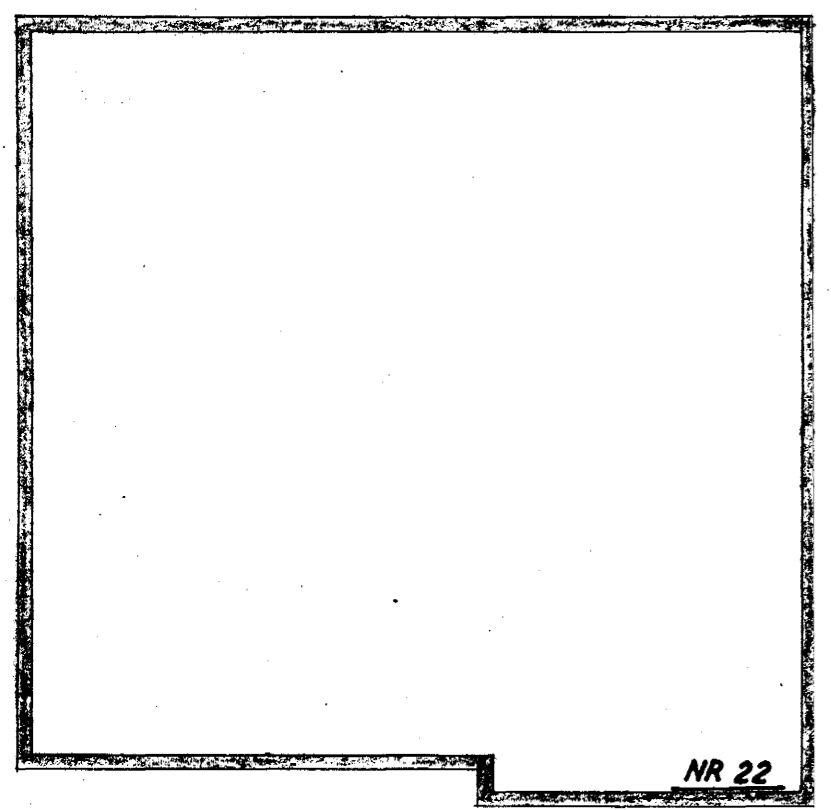
22



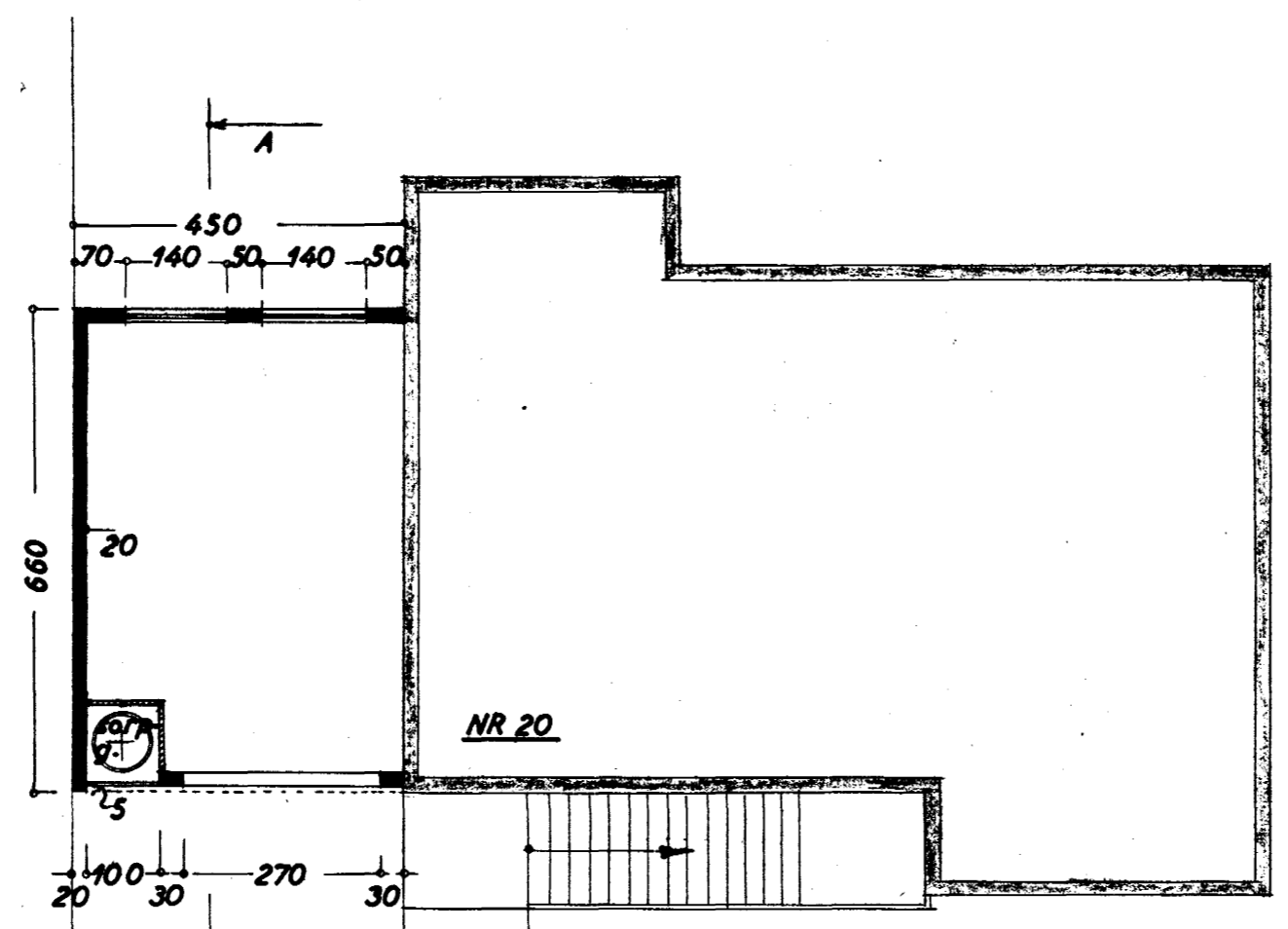
Suðvestur



Norðvestur

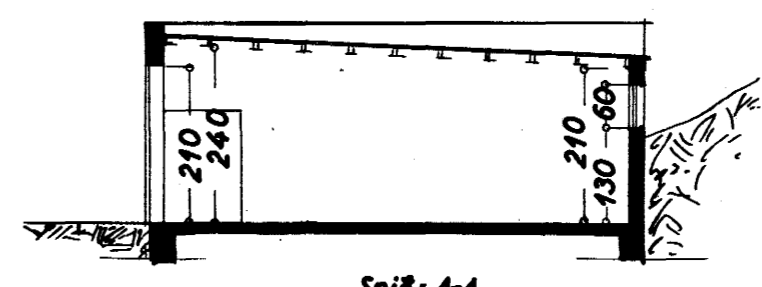


NR 22



NR 20

Grunnmynd



Snið: A-A

STÆRD:

Hús 95,7 m<sup>2</sup>  
Bílg. 29,7 m<sup>2</sup> 71,0 m<sup>3</sup>  
Lóð. 739,1 m<sup>2</sup>

HERJÓLFSGATA NR. 20  
BÍLGEYMSLA

Útlit } 1:100  
Grunnmynd }  
Snið }  
Afstöðumynd 1:500

Hafnarfirði 2. júlí 1965  
*F. Sigurðsson*

HERJÓLFSGATA