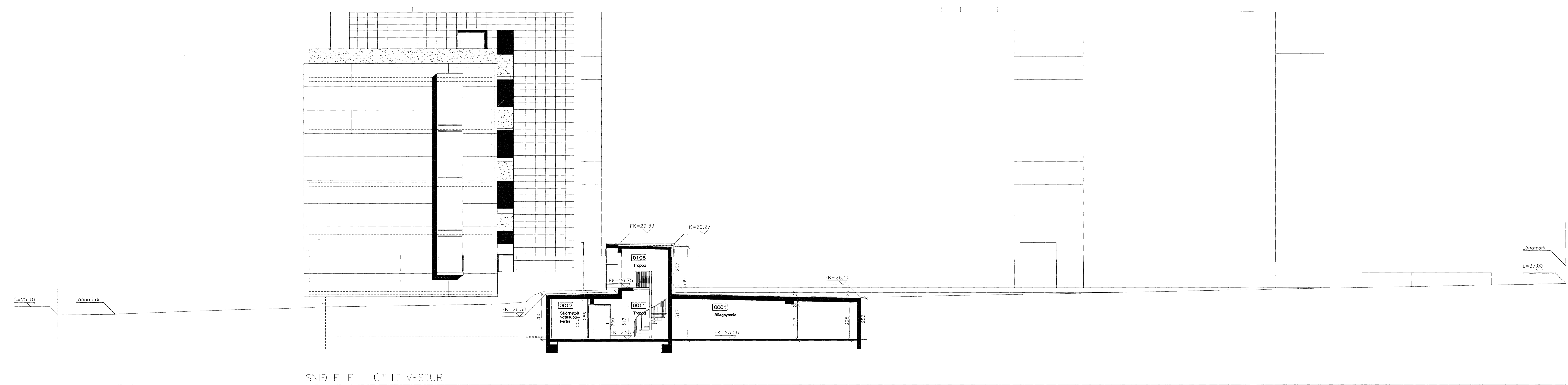
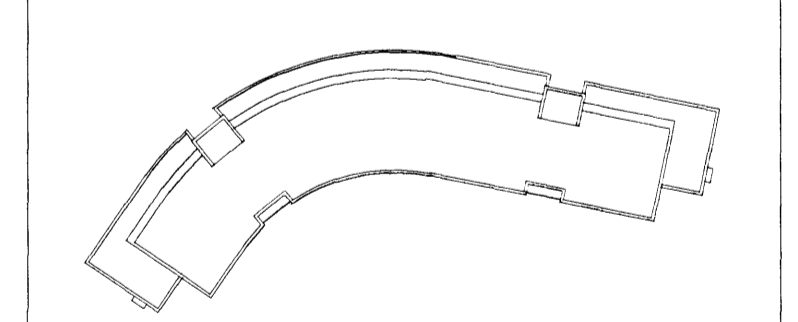


SNID D-D - ÚTLIT AUSTUR



SNID E-E - ÚTLIT VESTUR

C:
 B:
 A: Reyndartekning: 24.10.2007
 BREYTINGAR: DAGS:



ADALUPPDRATTUR

Dalshraun 1, Hafnarfirði
 Rís ehf. VERK: DAL5 0406
 KVARÐI: 1:100
 DAGS: 20.04.04
 SNID D-D/ÚTLIT AUSTUR TEKN: 0B
 SNID E-E/ÚTLIT VESTUR SKRÁ406-100 og 081.dwg

ÚTI INNI
ARKITEKTAR
 ÞINGHÖLTSSTRÆTI 27 101 REYKJAVÍK
 SIMAR 552 7660 & 542 7660 FAX 552 7661
 HEITFANG uti.inni@ui.is
 VEFANG
 BALDUR Ó. SVAVARSSON ARKITEKTAR FAI
 120357-5149
 JÓN ÞÓR ÞORVALDSSON ARKITEKTAR FAI
 021256-7579