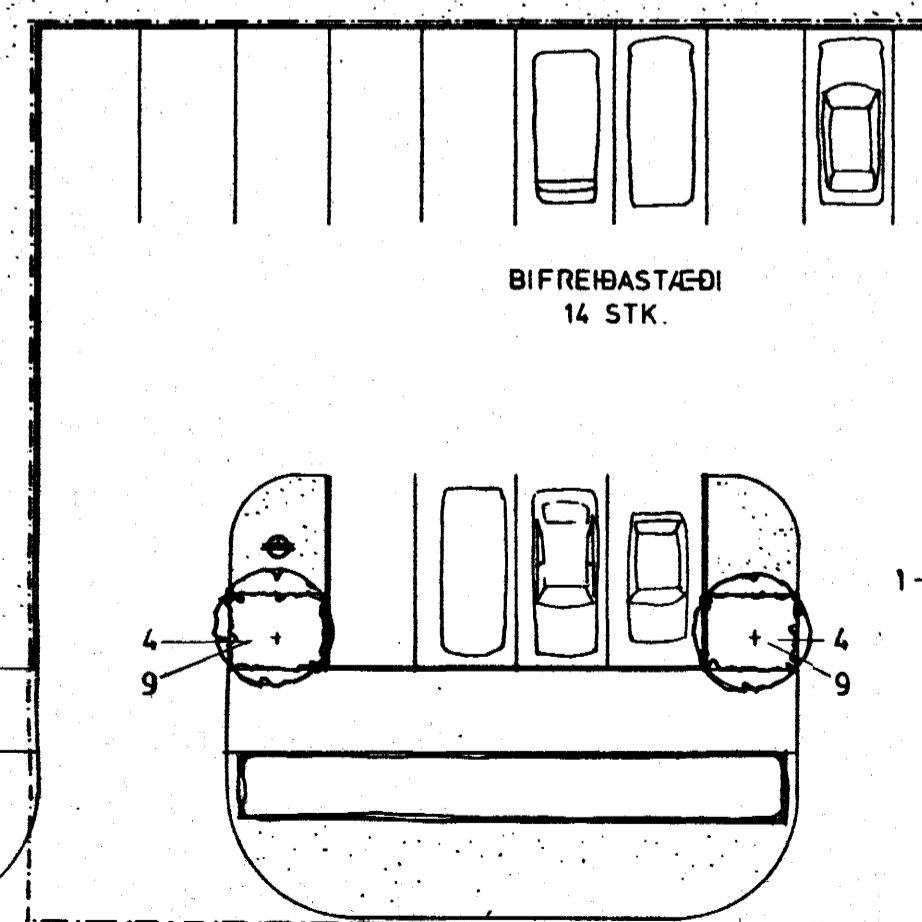
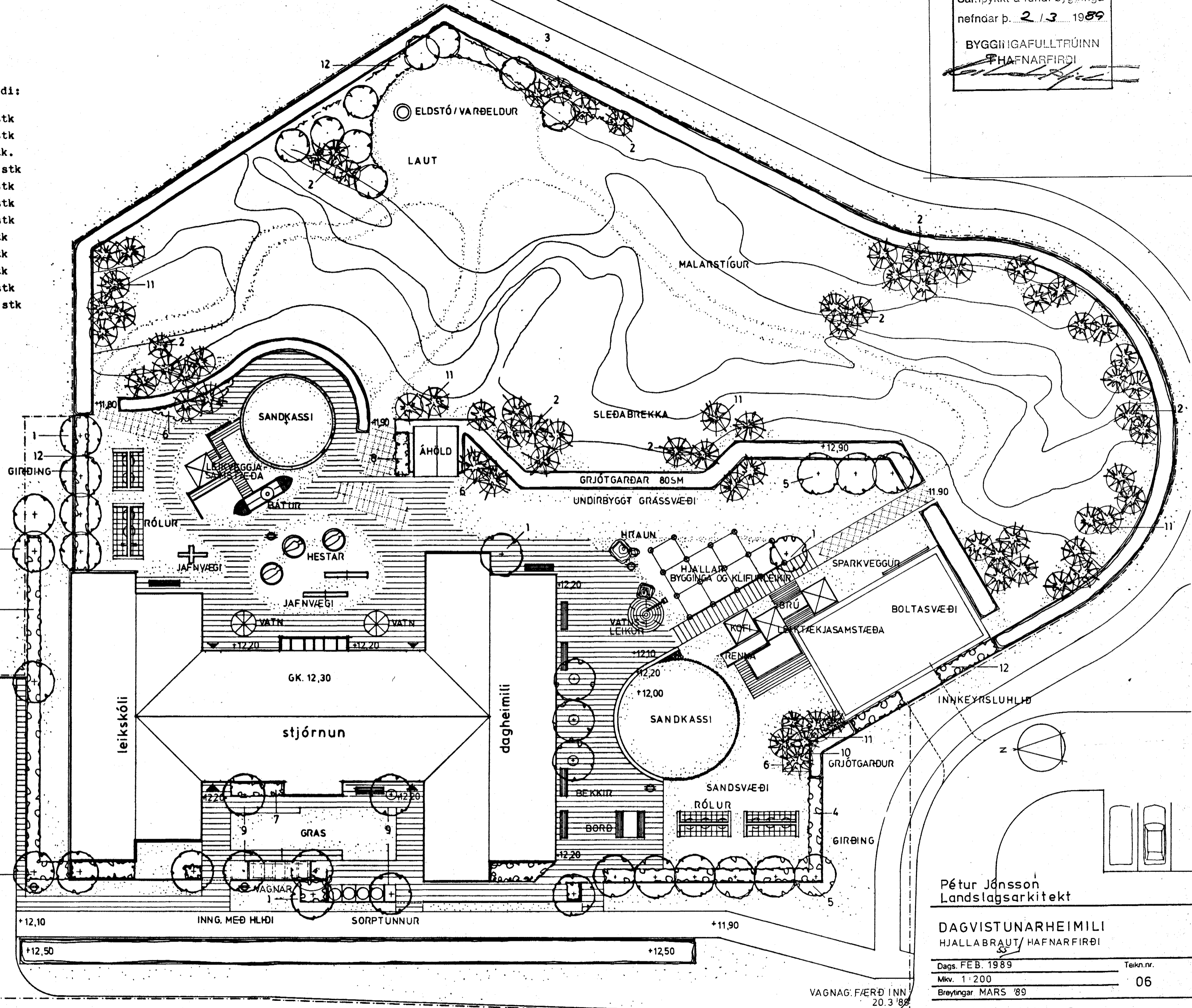


Skýringar:

| nr: | heiti:       | stærð/hæð:            | fjöldi: |
|-----|--------------|-----------------------|---------|
| 1   | alaskæsp     | 100-125 sm            | 15 stk  |
| 2   | bergfura     | 25-30 sm              | 42 stk  |
| 3   | birki        | 60-80 sm              | 9 stk.  |
| 4   | glansmispill |                       | 195 stk |
| 5   | ilmareynir   | 100-125 sm            | 12 stk  |
| 6   | loðvíðir     | 0/2                   | 55 stk  |
| 7   | runnamura    |                       | 25 stk  |
| 8   | rifs         |                       | 6 stk   |
| 9   | selja        |                       | 6 stk   |
| 10  | sitkagreni   | 40-60 sm              | 3 stk   |
| 11  | stafafura    | 30-40 sm              | 29 stk  |
| 12  | viðja        | 0/2klippt<br>30-40 sm | 150 stk |

|  |             |
|--|-------------|
|  | hellur      |
|  | gras        |
|  | sandsvæði   |
|  | malbik      |
|  | grassteinn  |
|  | trépollar   |
|  | gúmmihellur |
|  | þrifahellur |
|  | girðing     |
|  | lýsing      |



LÓÐ  
mkv. 1:200

Pétur Jónsson  
Landslagsarkitekt

DAGVISTUNARHEIMILI  
HJALLABRAUT/ HAFNARFIRÐI

Dags. FEB. 1989  
Mkv. 1:200  
Breytingar MARS '89

Arkitektar sf

Laufásveg 19  
101 Reykjavík  
Símar (91) 11010 - 19580

Arni Friðriksson arkitekt FAI  
Páll Gunnlaugsson arkitekt FAI  
Valdimar Harðarson arkitekt FAI

*Páll Gunnlaugsson Valdimar H.*

VAGNAG: FÆRÐ INN  
20.3.89