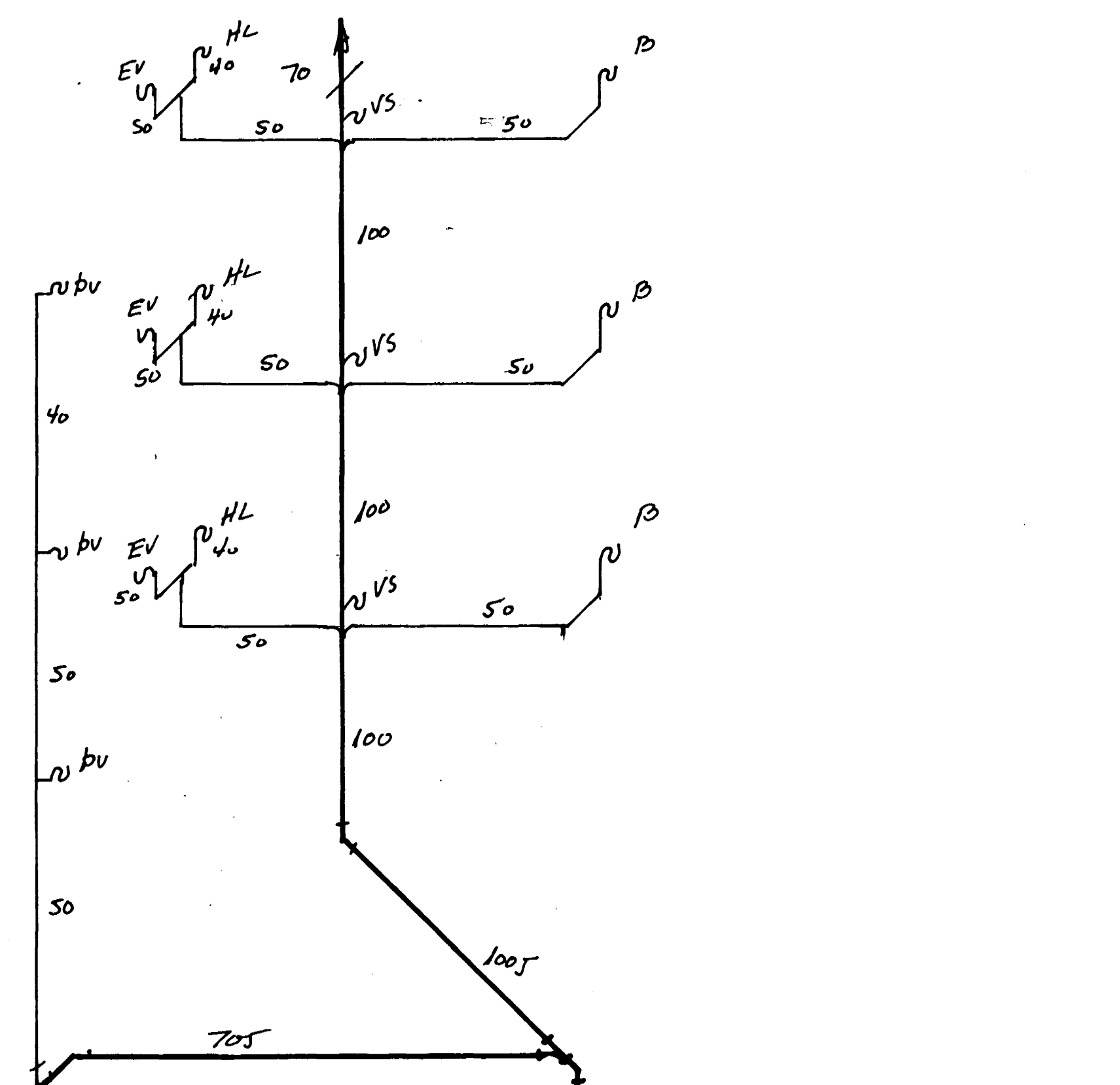
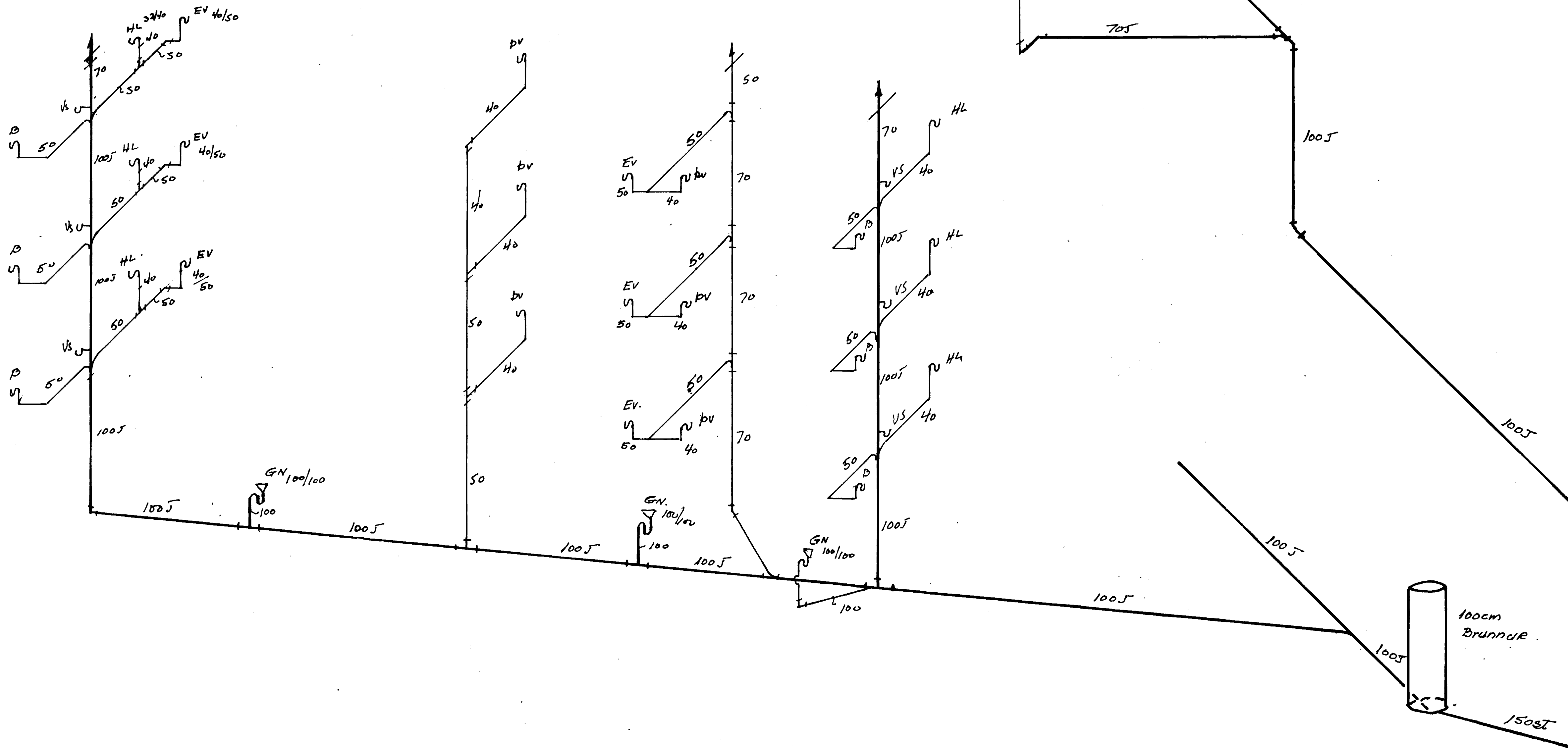


VATNSLASAR

- B 40/50
- EV 40/50
- HL 32/40
- bv 32/40
- VS 100/100
- GN 100/100



| | | |
|---------------------------------|------------|-------|
| HJALLABRAUT 5 SKOLP | TEKNI. DR. | 21571 |
| | DRAGI. | |
| KOLBEINN KG JONSSON TEKNIFF. | TEKNI. NR. | 7104 |
| | BL. | 6 |