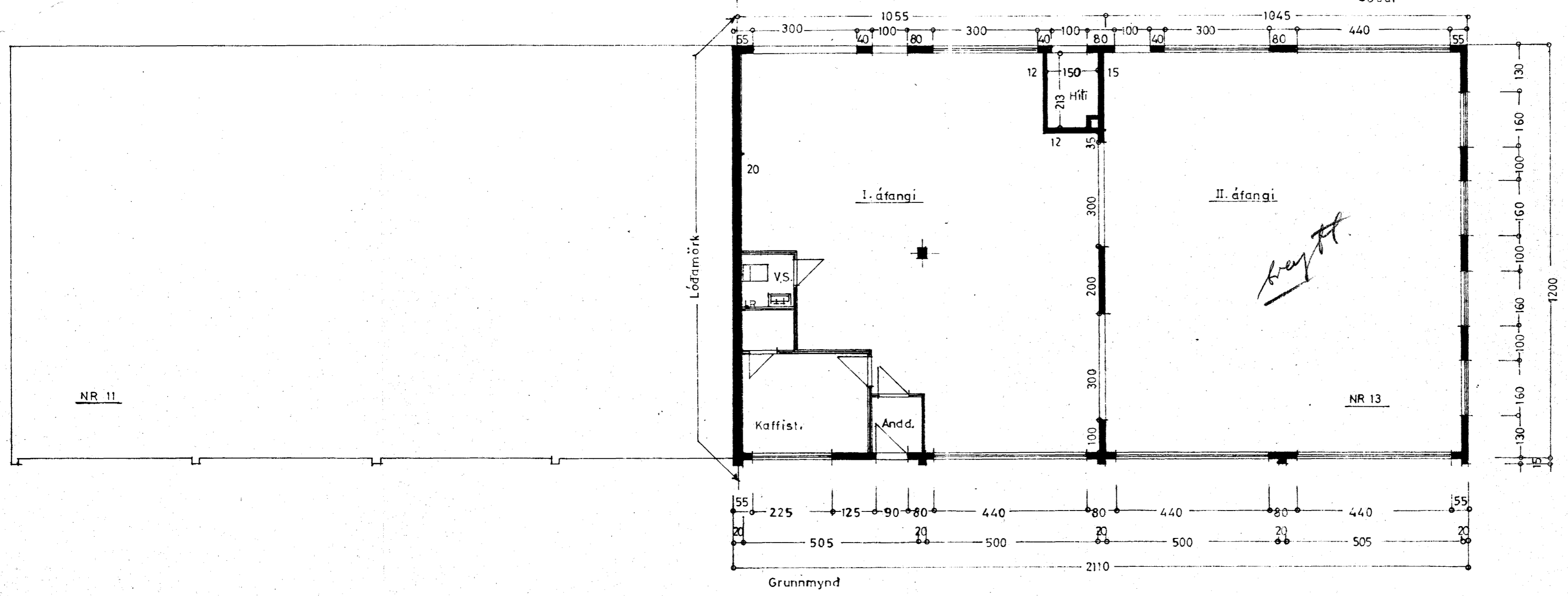
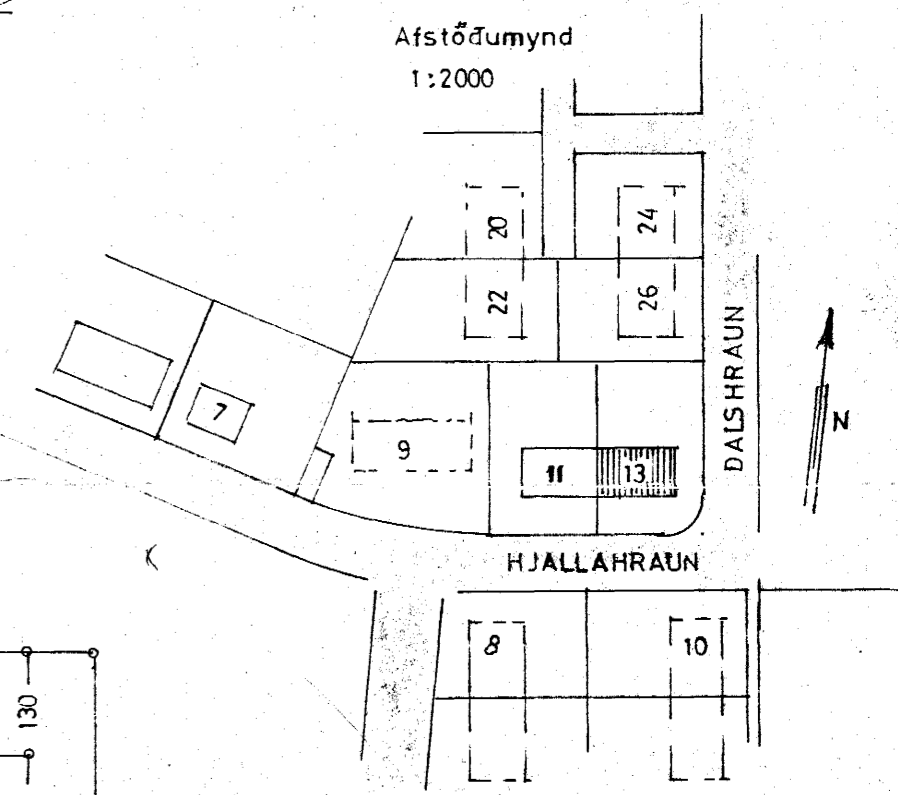
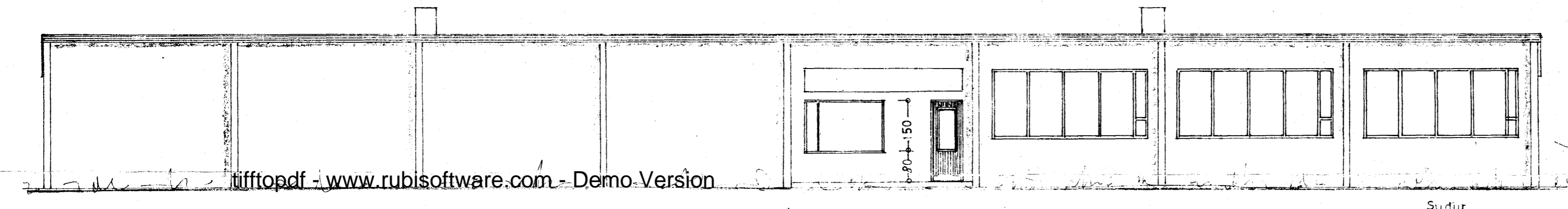
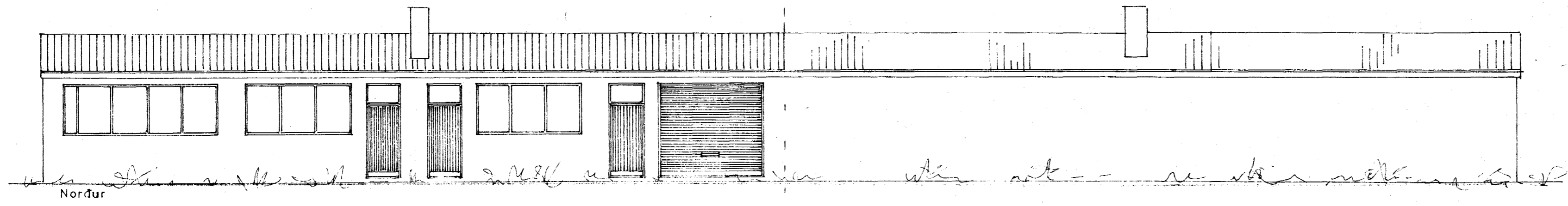
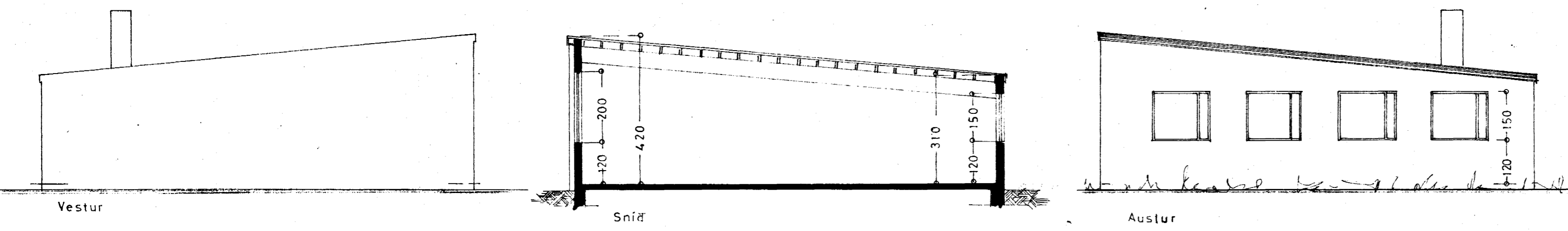


Samþykkt á fundi bygginga-
nefndar b. 5. 4. 1972
BYGGINGARURÐIÐINN
I HAFNASTÍÐI
E. Sigurðsson



STÆRD:

Löð	1.315,8 m ²
Hús:	
I. áfangi	126,6 m ² , 493,7 m ³
II. áfangi	125,4 m ² , 489,1 m ³
Total	252,0 m², 982,8 m³

HJALLAHRÁUN NR 13

ÚTLIT }
GRUNNMYND } 1:100
SNÍÐ }
AFSTÖÐUMYND 1:2000

Hafnaðir 2. mars 1972 TEIKN:
E. Sigurðsson