

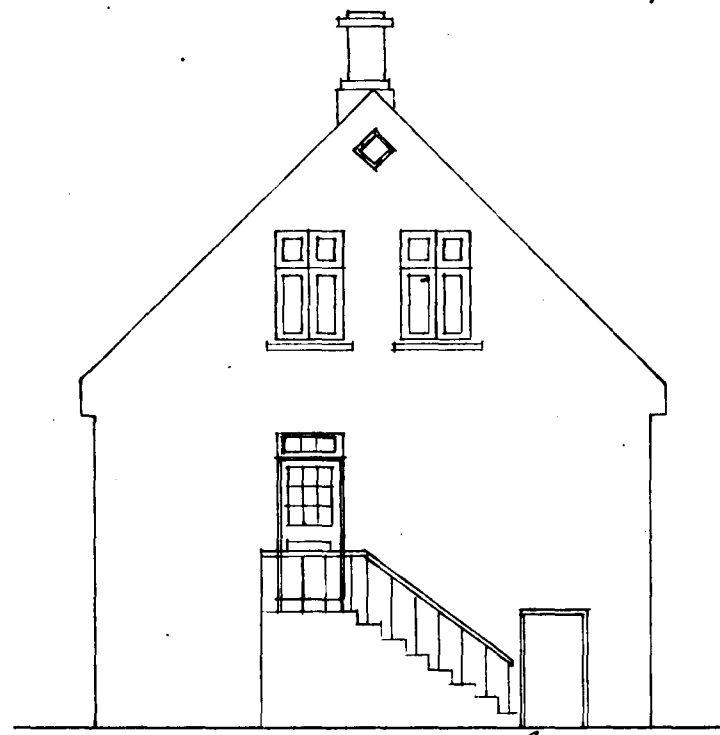
Húsið no. 7 við Hlíðarbraut í Hafnarfirði.

Húsið fyrir breytingu.

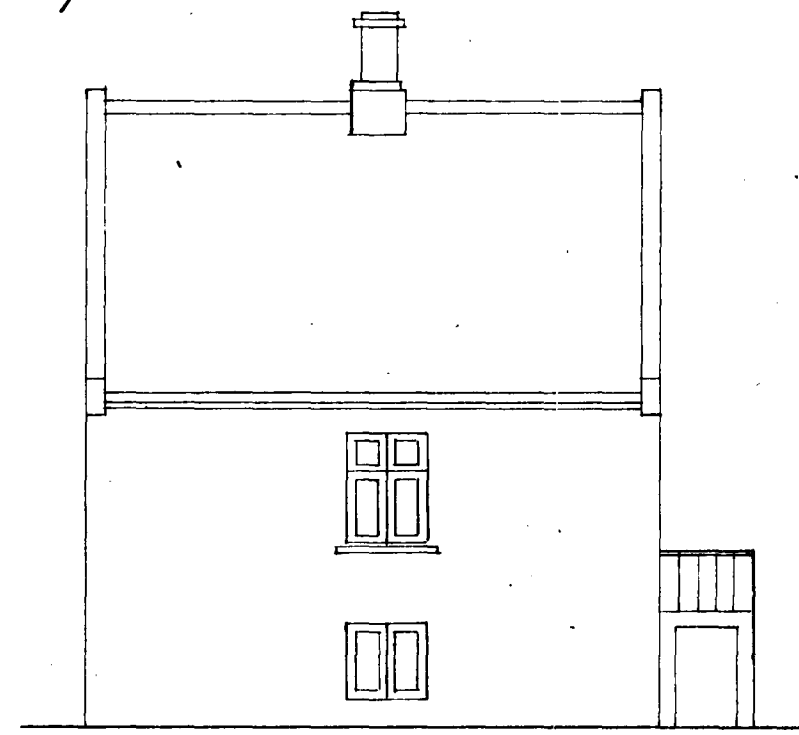
M.K. 1:100.



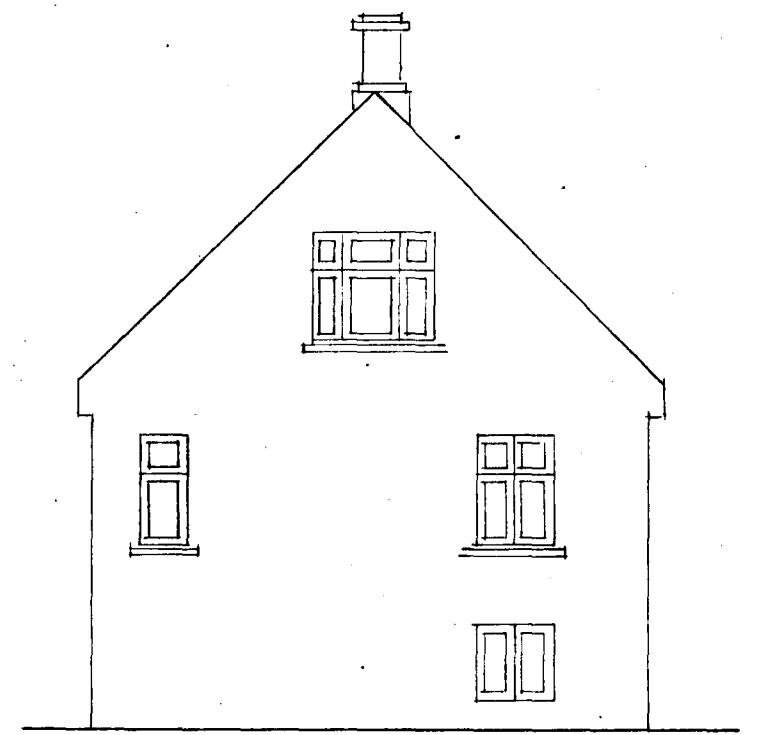
Vestur.



Nordur.

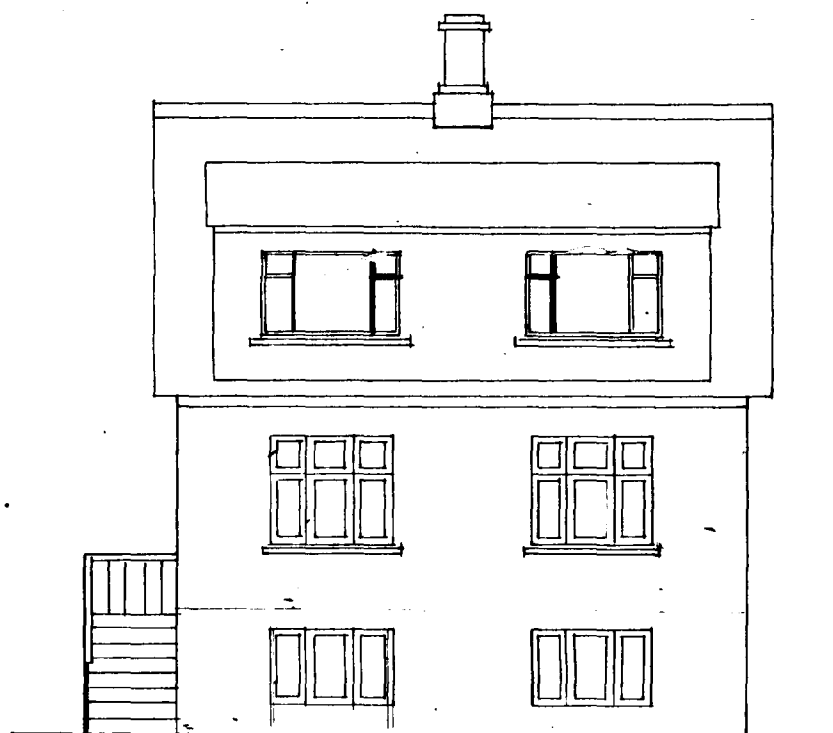


Austur.

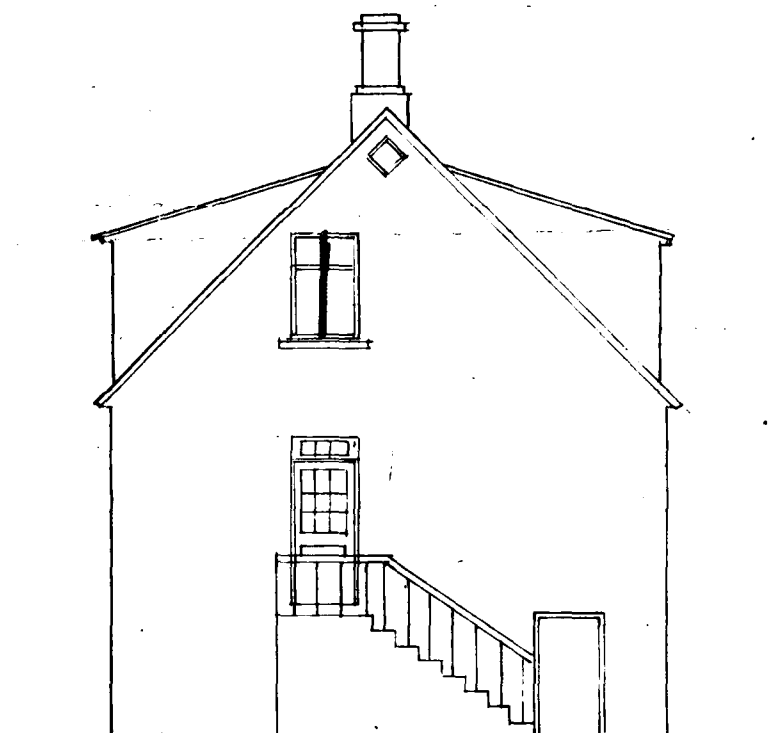


Sudur.

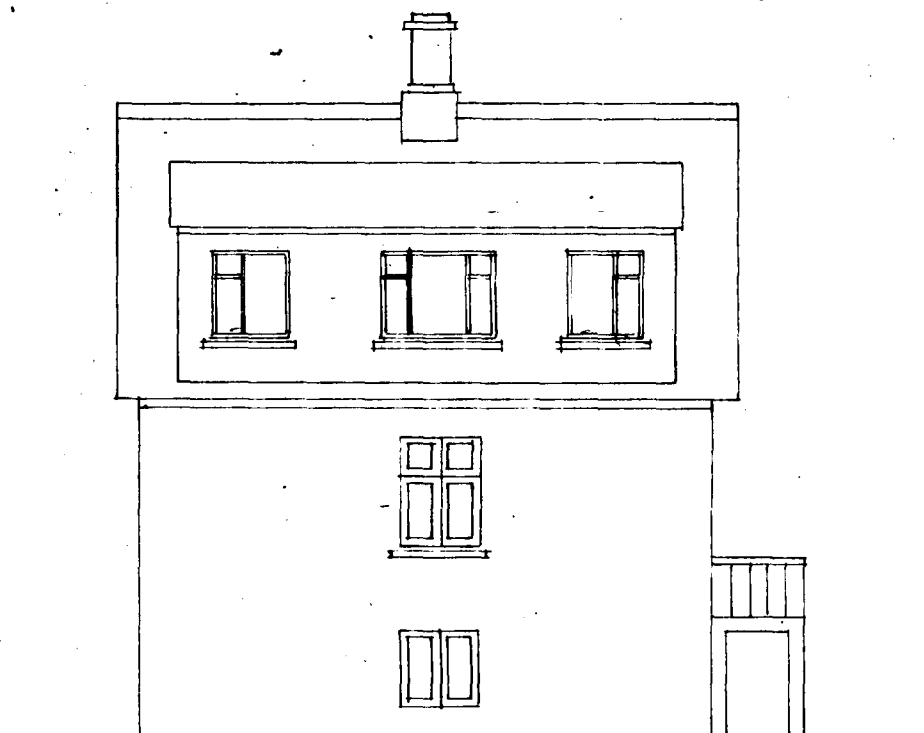
Húsið eftir breytingu.



Vestur.



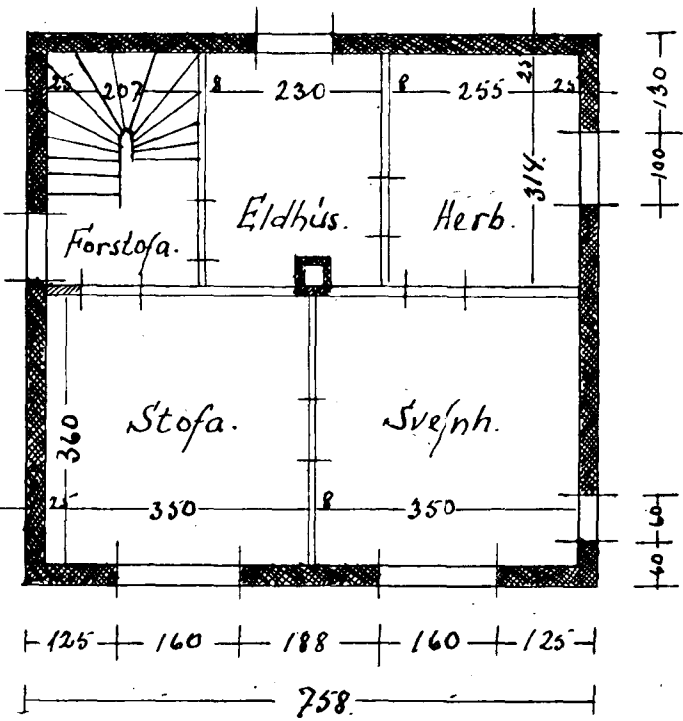
Nordur.



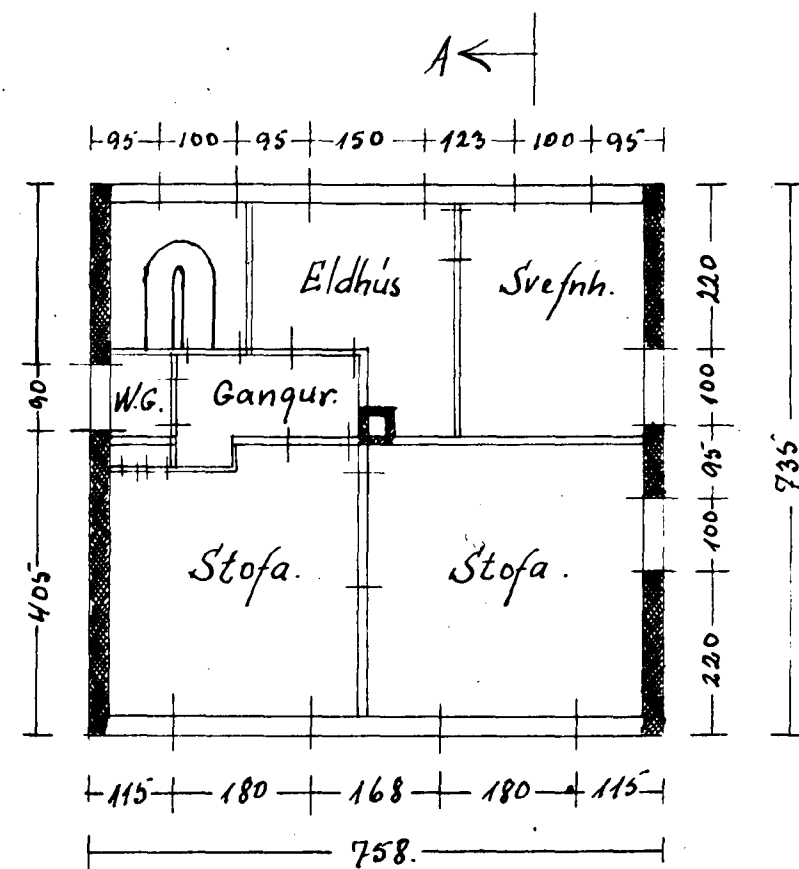
Austur.



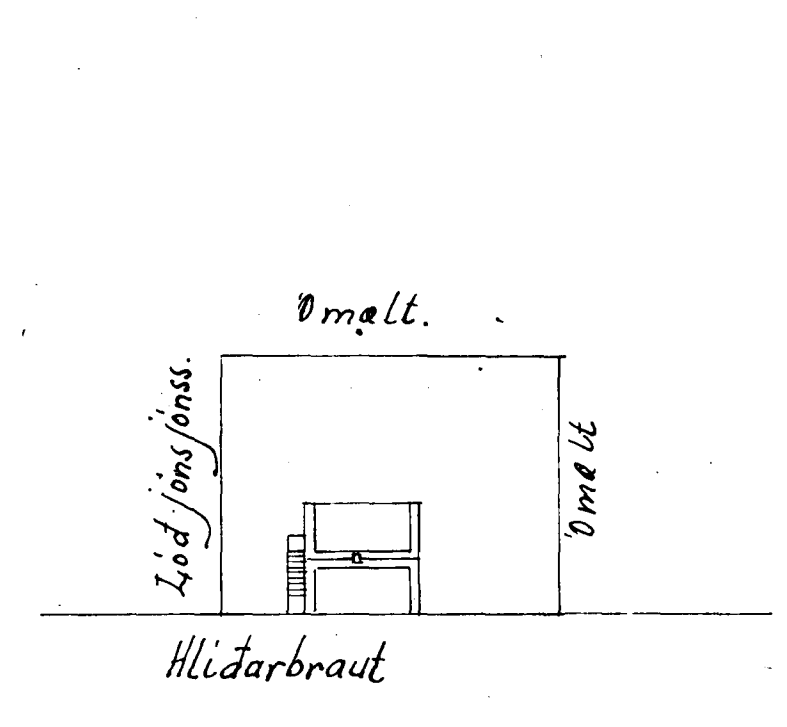
Sudur. RAUÐIR PÓSTAR HVERFI



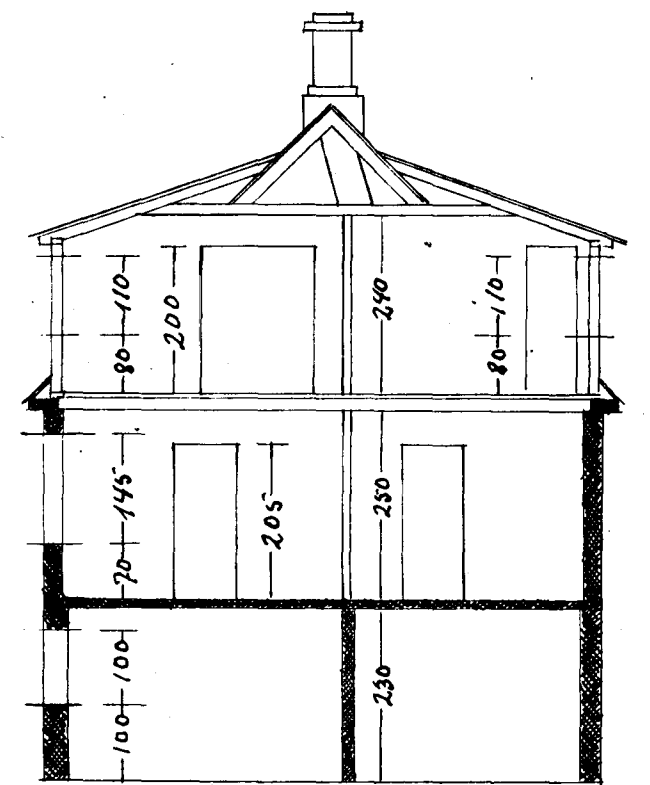
Hæðin.



Loftið A.



Afstöðumynd M.K. 1:500.



Skurður A.-A.

Hafnarfirði í janúar 1947.  
Liquódat Arnórsson