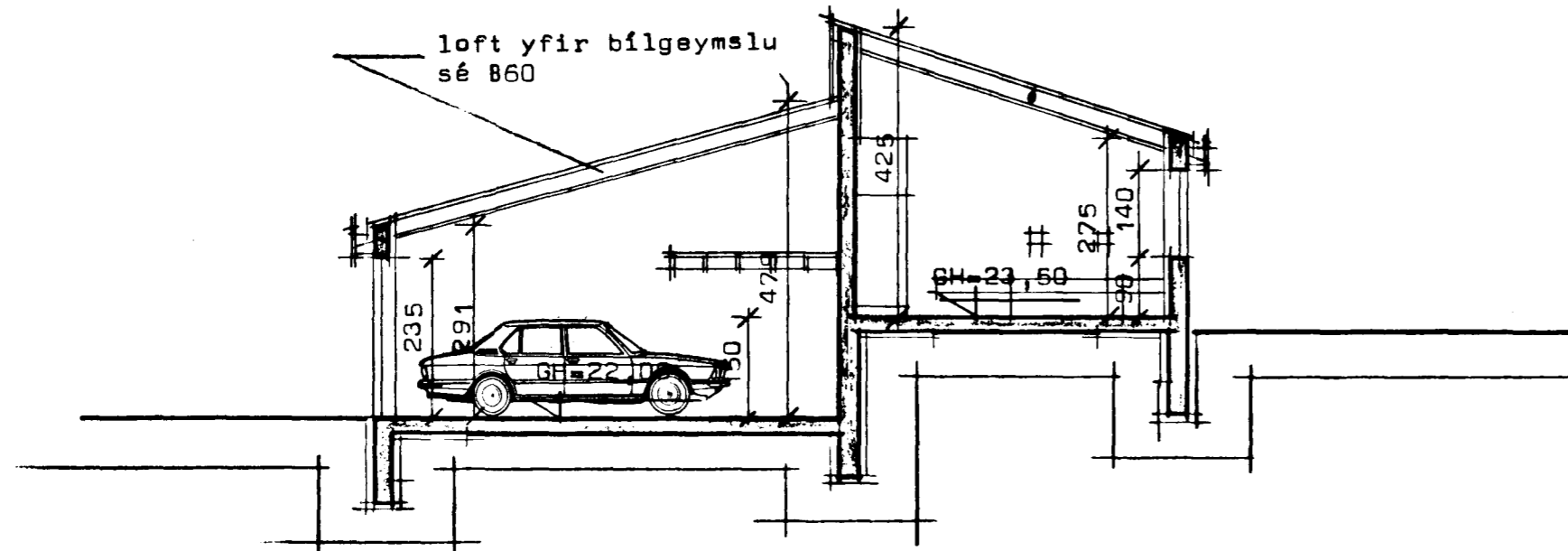
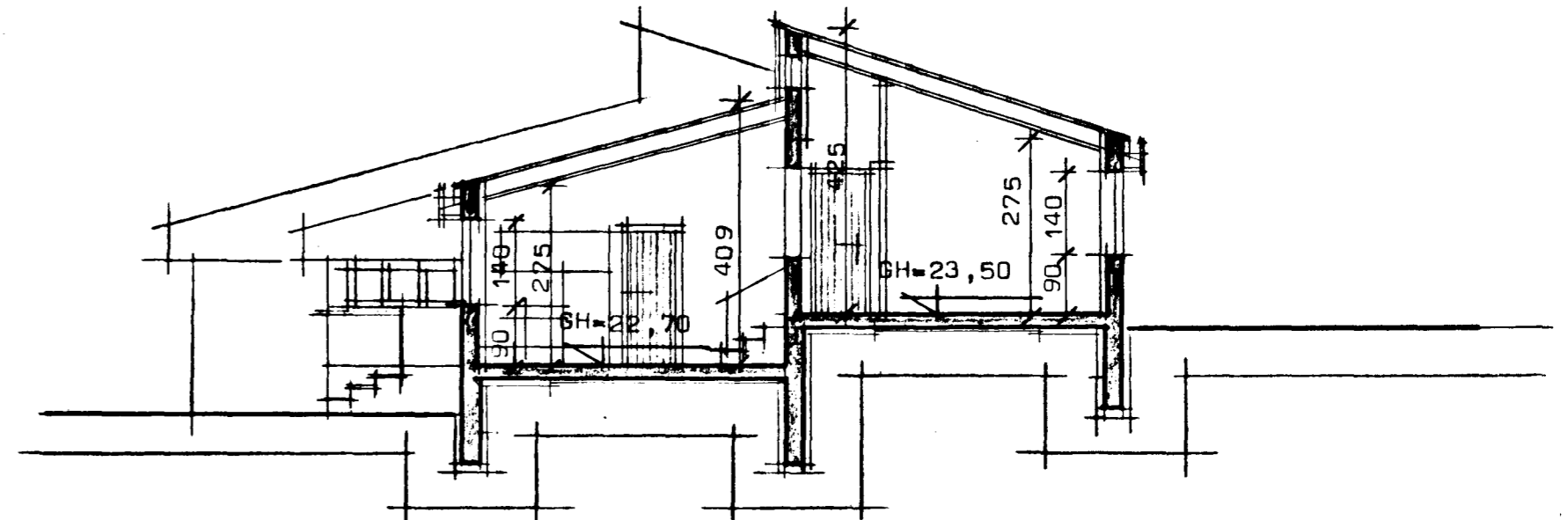


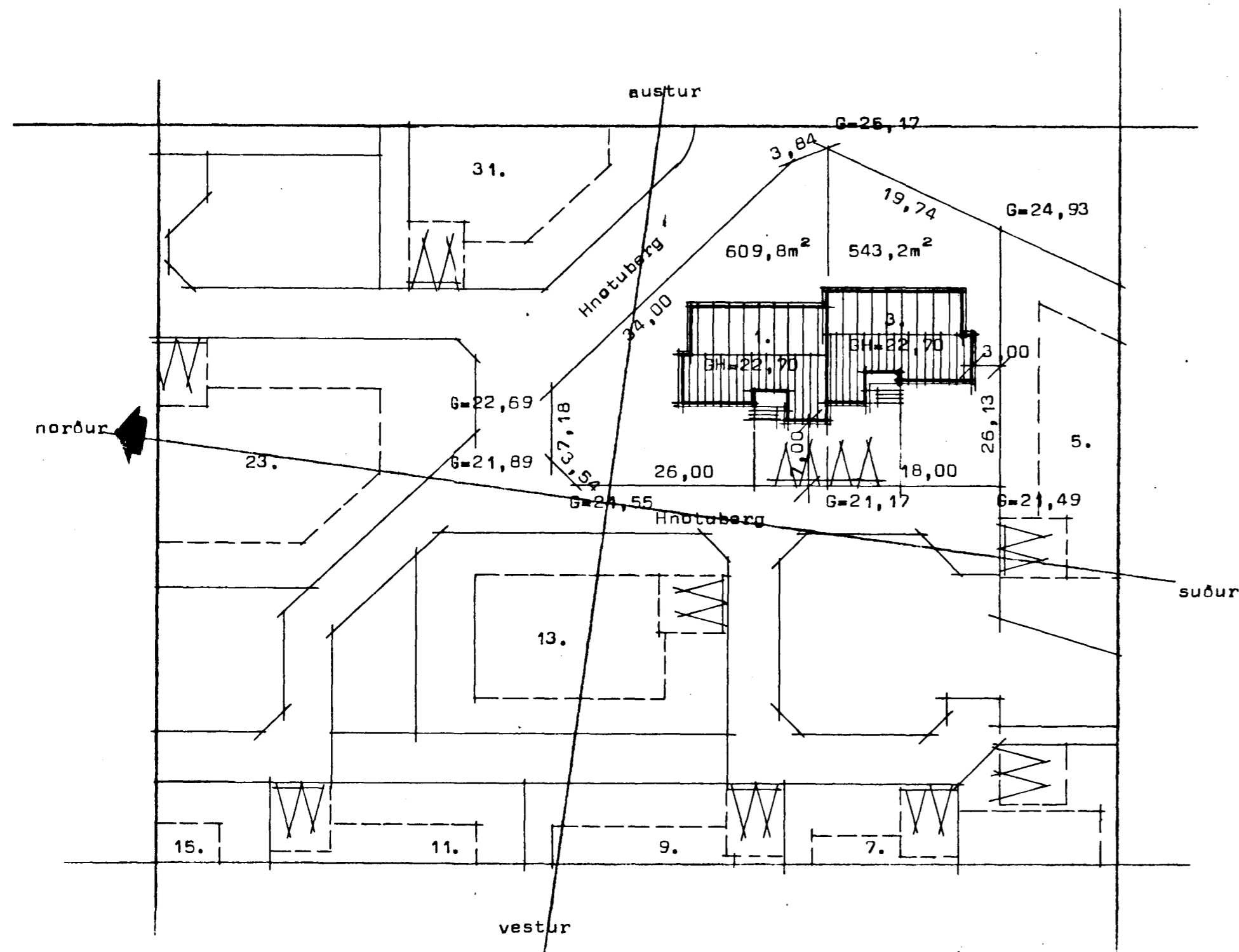
*[Signature]*



Sneiðing í bilgeymslu



Sneiðing í hús



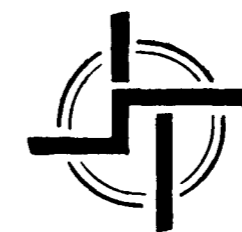
Afstöðumynd Mkv 1:500

Kólnunartölur K á hitaveitusvæði

- Þak ..... 0,20 w/m<sup>2</sup>C<sup>0</sup>
- Gólf ..... 0,30 w/m<sup>2</sup>C<sup>0</sup>
- Ötveggir ..... 1,00 w/m<sup>2</sup>C<sup>0</sup> vegið meðaltal.

- Flatarmál húss (1-3) ..... 308,00 m<sup>2</sup>
- Rúmmál húss (1-3) ..... 1102,00 m<sup>3</sup>

- Nýtingarhlutfall NR 1. .... 0,25
- Nýtingarhlutfall NR 3. .... 0,28
- 1r merkir loftrás á 125mm.



**STAÐALHÚS**

TEIKNISTOFA SIÐUMÚLA 3I SÍMI 8314I

VERKEFNI	DAGS. 1983	VERK NR
Sneiðingar og afstöðumynd	MKV. 11100 11500	BU 143
Hnotuberg 1-3 Hafnarfirði	BR.	
	BLAD NR 1.03	

*[Signatures]*  
SIGURDUR GUDMUNDSSON SIGURDUR P. KRISTJÁNSSON FTFÍ