

Sampykkt á fundi bygginga-
nefndar þ. 18.10.1987

BYGGINGAFULLTRÚINN
Í HAFNARFIRÐI

Ela Skarpholt

STÆKKUN:

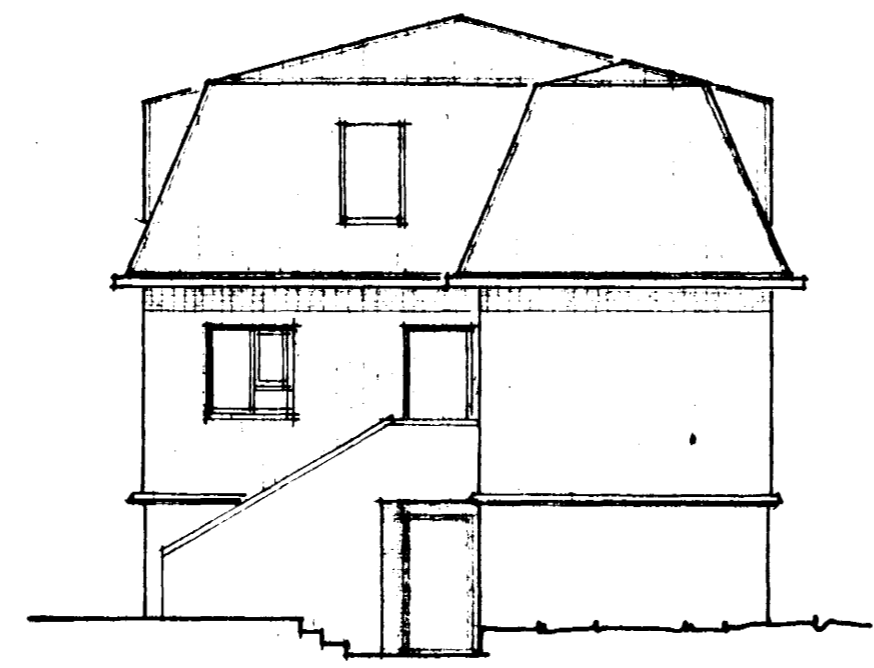
KJALLARI	8,3 m ²	19,6 m ³
MIDHÆÐ	8,3 m ²	22,2 m ³
RIS	83,3 m ²	230,0 m ³
ALLS:	99,9 m ²	271,8 m ³

VIÐBYGGING

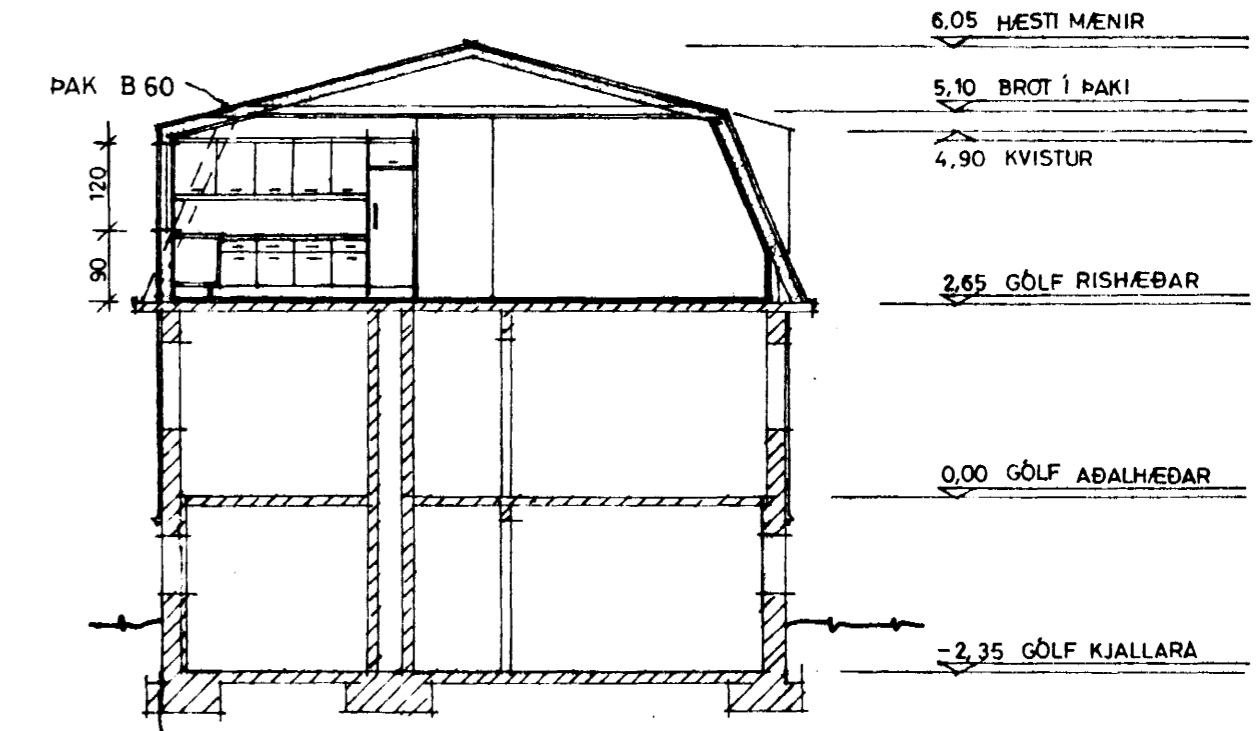
VIÐBYGGING



NORÐUR

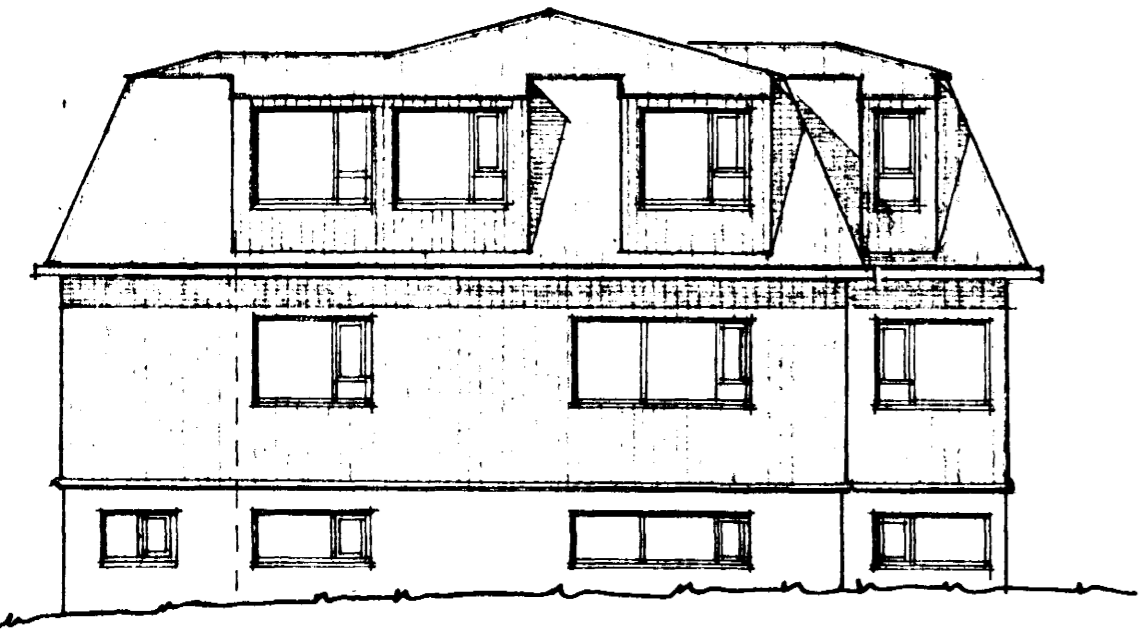


VESTUR

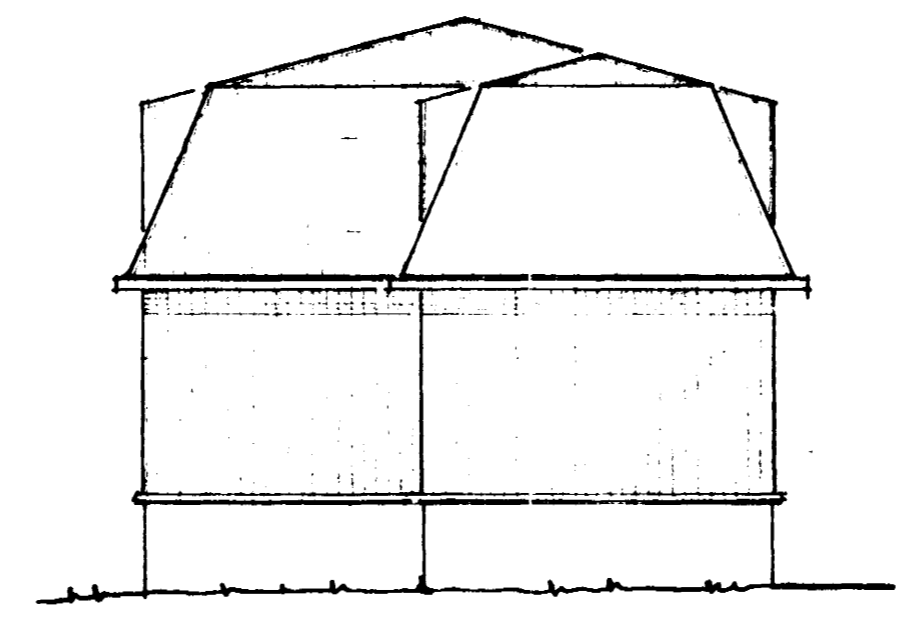


SNID A - A

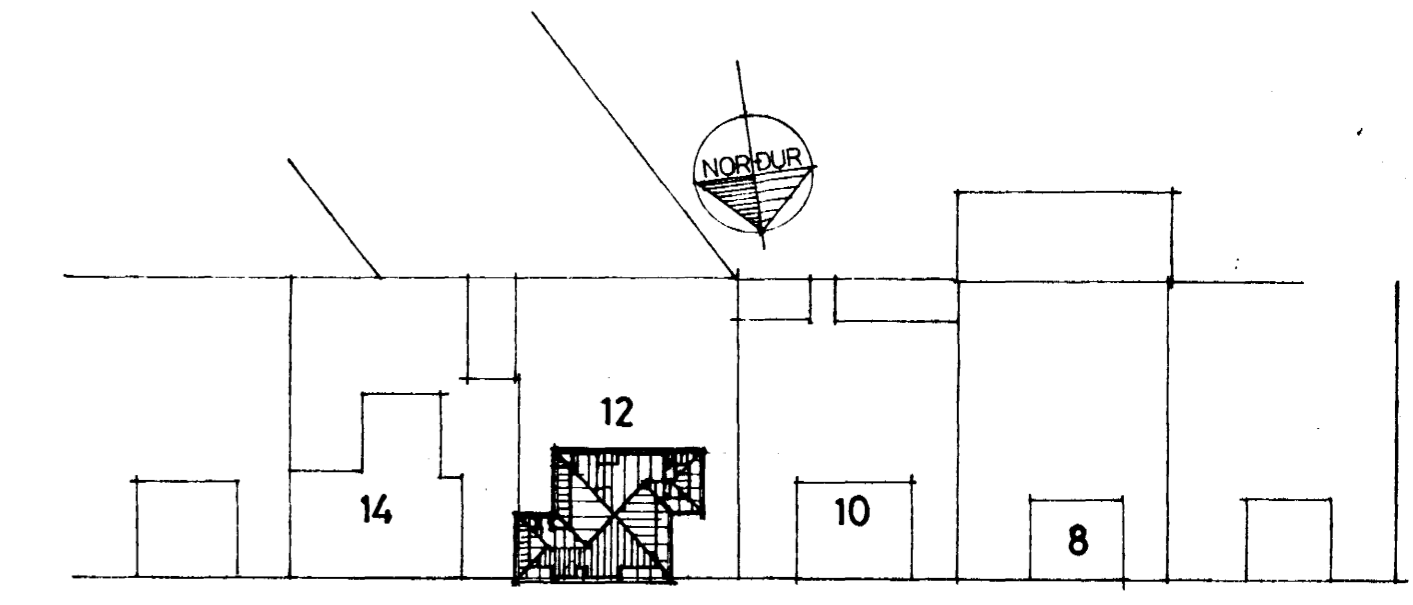
VIÐB.



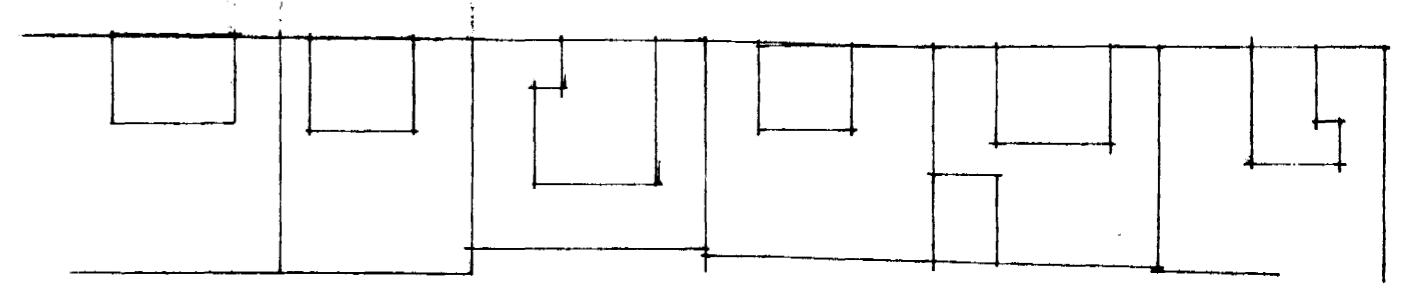
SUÐUR



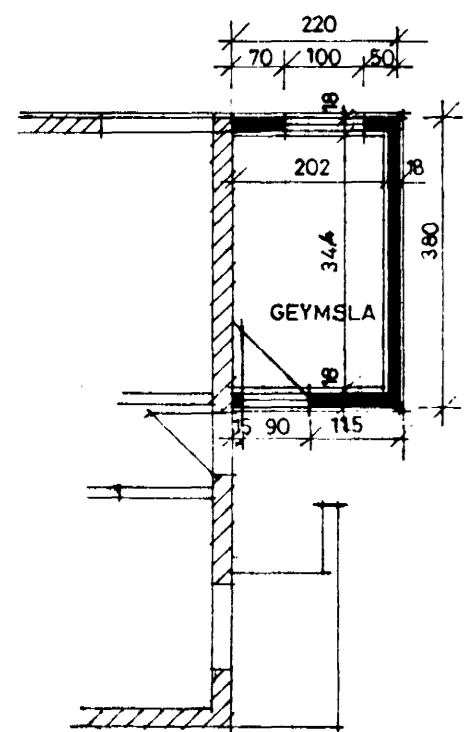
AUSTUR



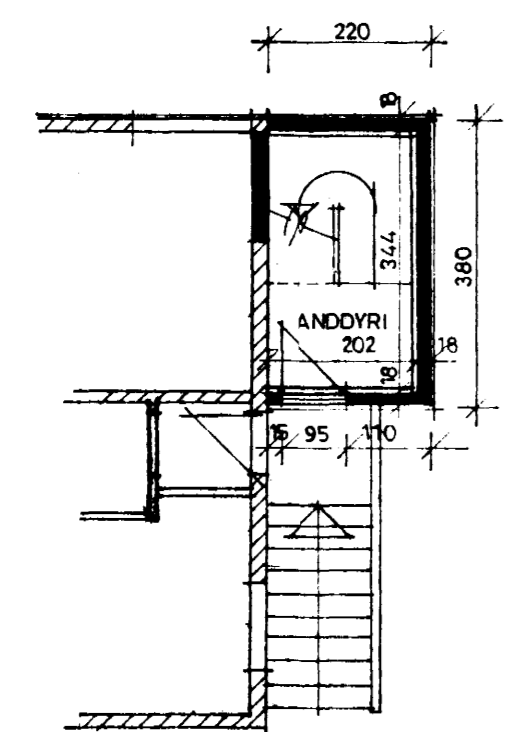
HOLTSGATA



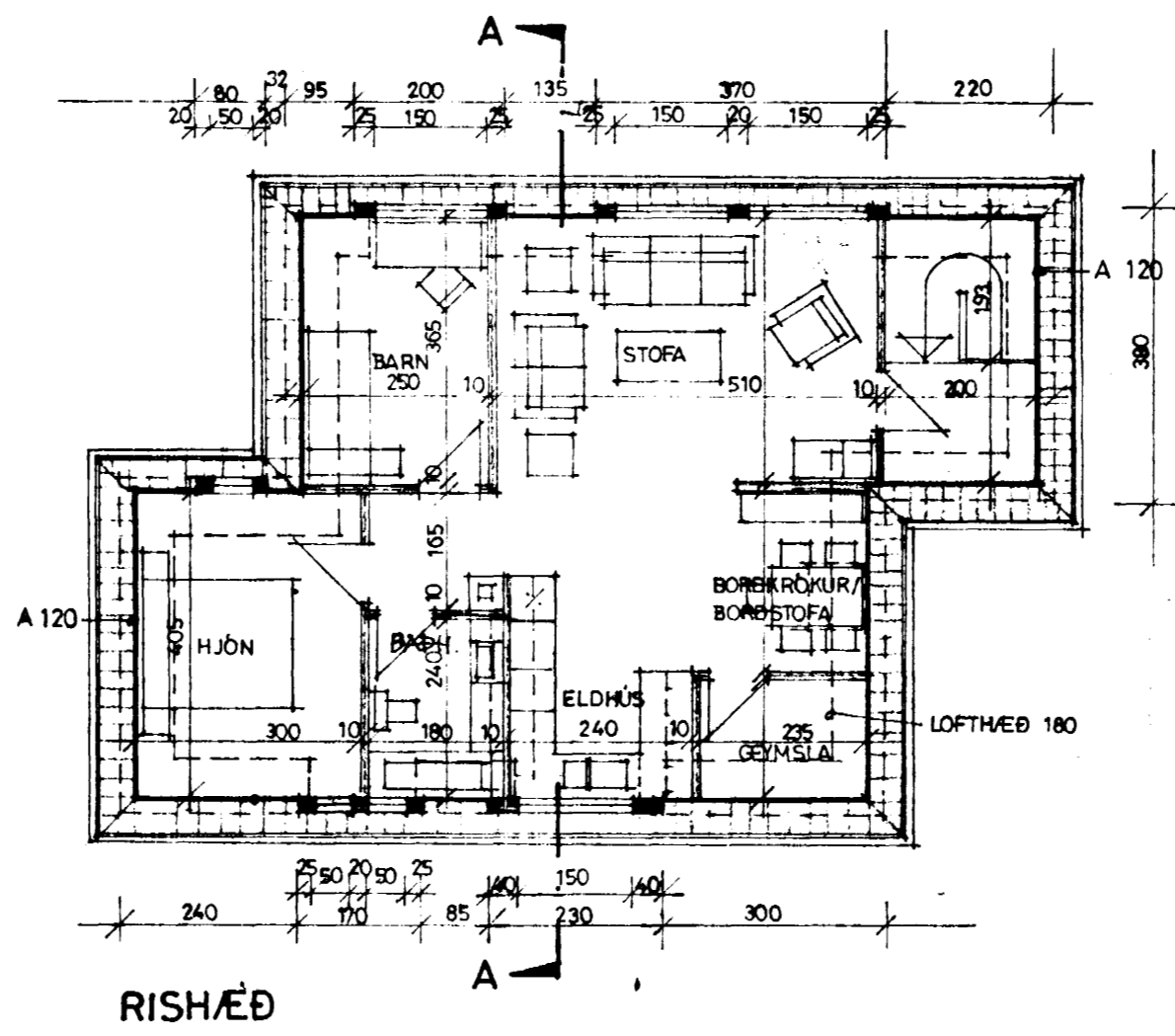
AFSTÖÐUMYND 1:500



KJALLARI



MIDHÆÐ



RISHÆÐ

TEIKNISTOFAN REYKJAVÍKURVEGI 60, 220 HAFNARFIRÐI
PÁLL V. BJARNASON ARKITEKT, FAI s. 54355

HOLTSGATA 12, HAFNARFIRÐI - VIÐBYGGING, NÝTT RIS

ÚTLIT, GRUNNMYNDIR, SNIB, AFSTÖÐUMYND

Páll V. Bjarnason

178.02

DAGS	JÚLÍ 1985
KVARDI	1:100 - 1:500
HANNAÐ	P.V.B.
TEIKNAD	A.E.
YFRIF.	P.V.B.