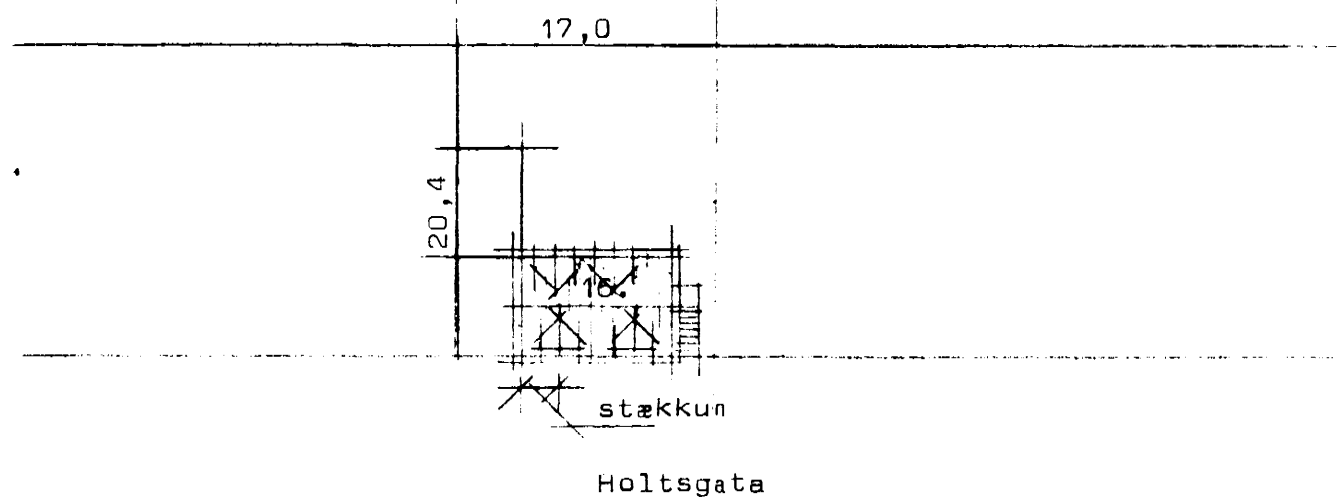


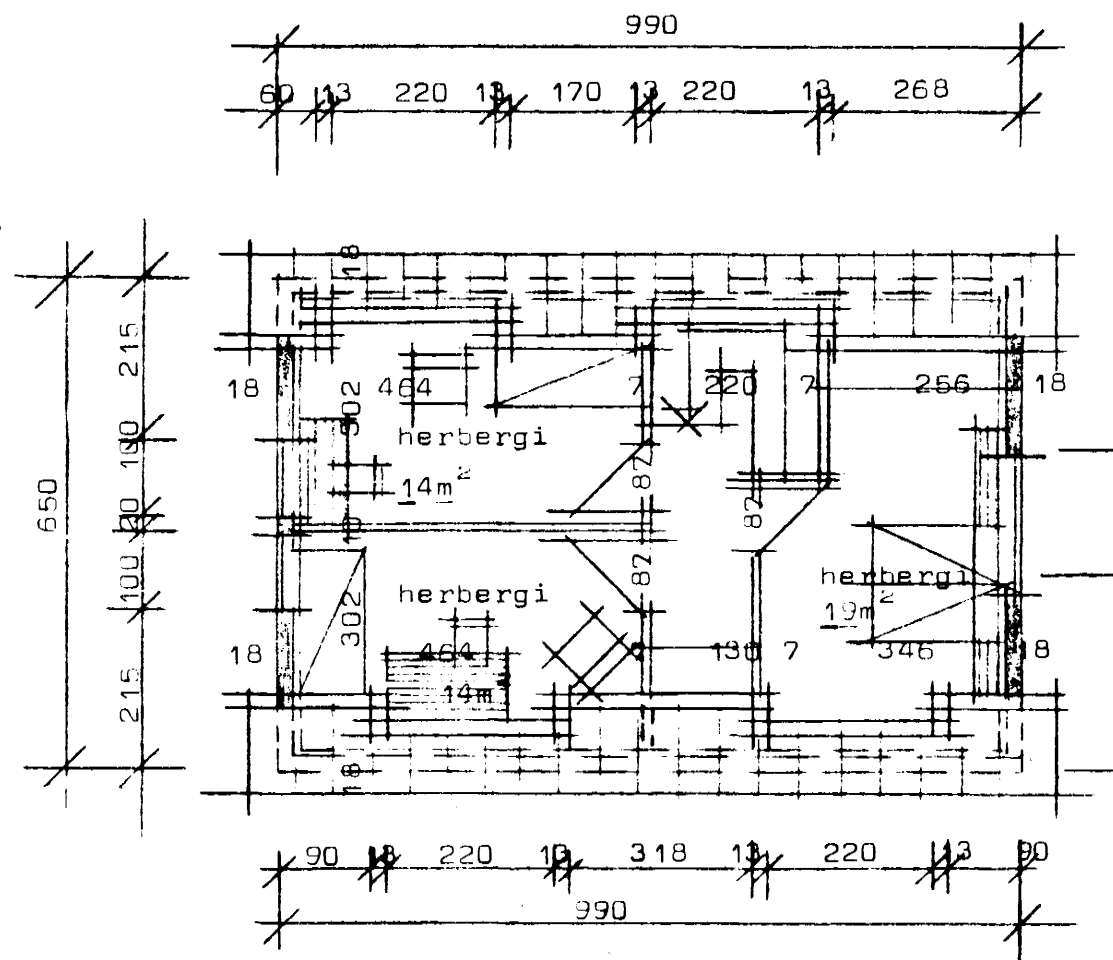
Holtsgata 16 Hafnarfirði

4180-0160 - 01

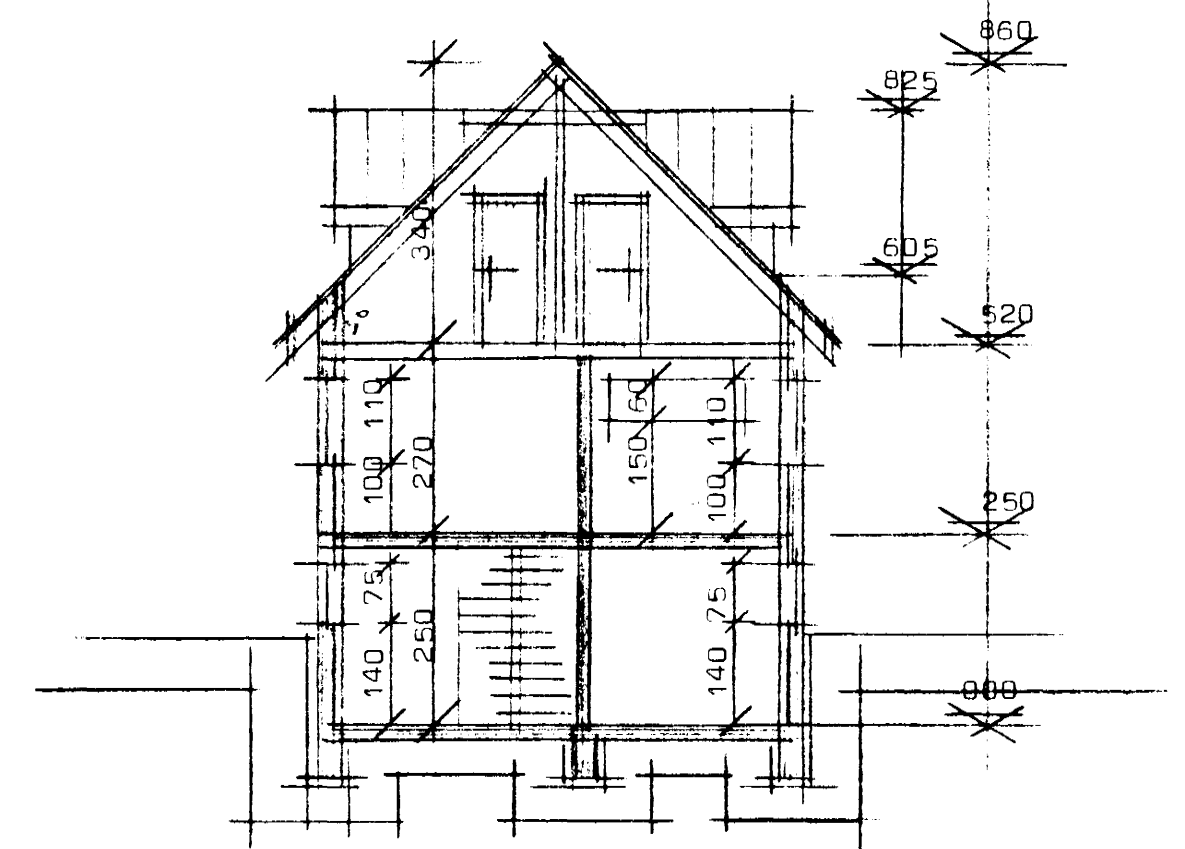
12 5 82
Fr. Sigurdsson



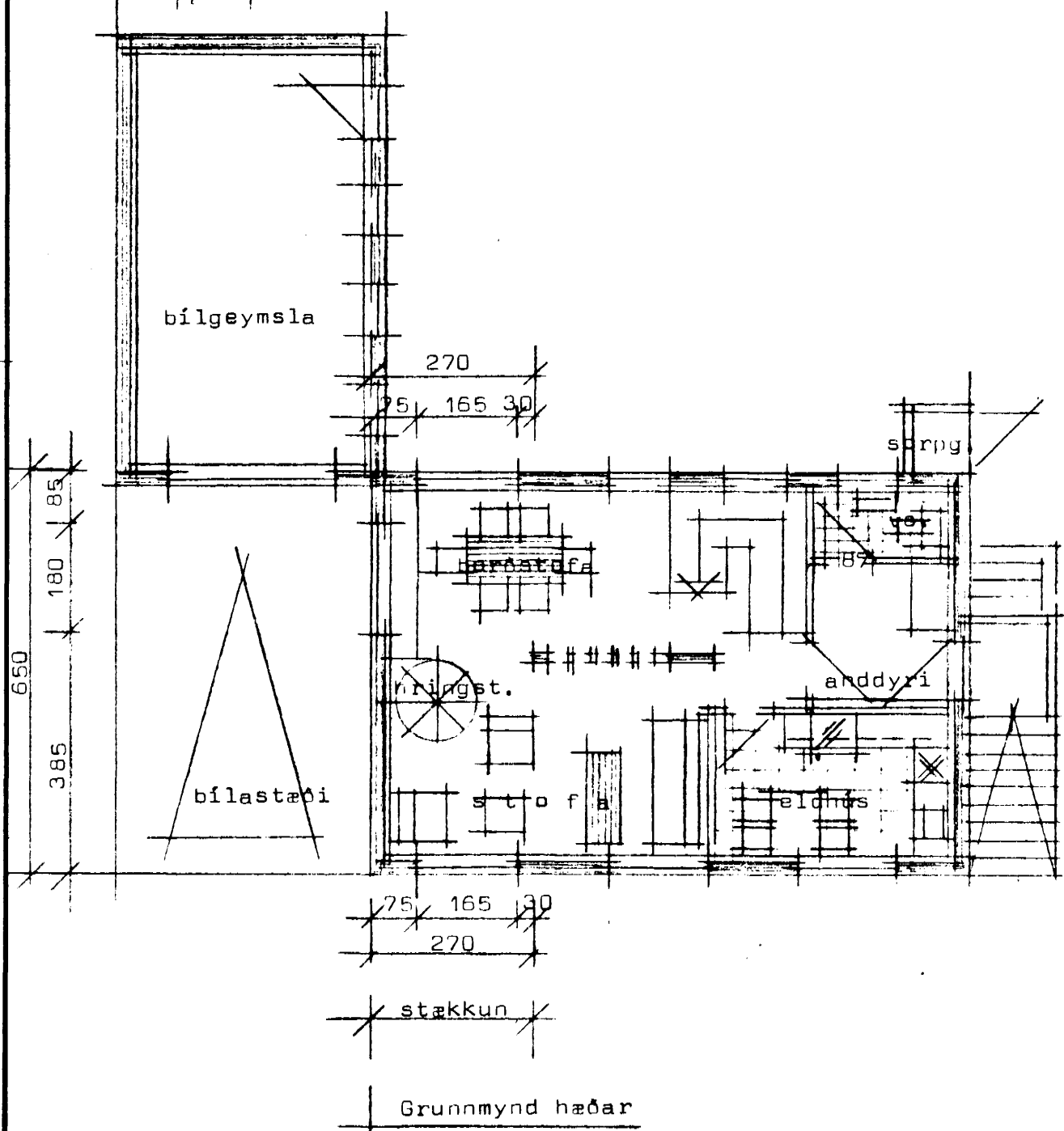
Afstöðumynd Mkv 1:500



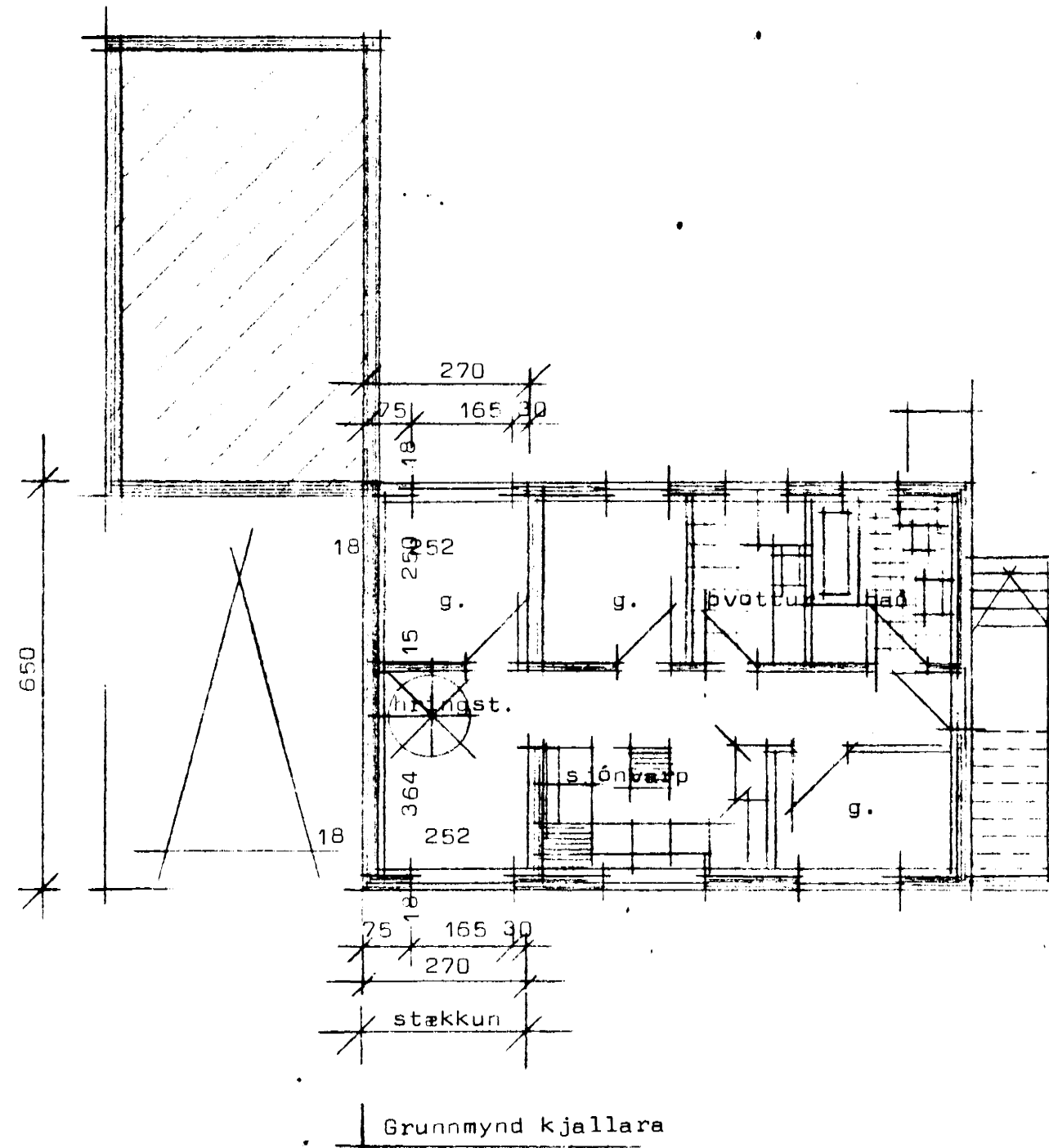
Grunnmynd risheðar



Sneiðing



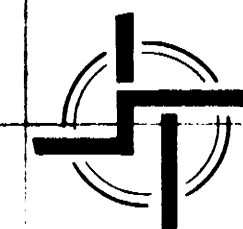
Grunnmynd hæðar



Grunnmynd kjallara

Húsið fyrst teiknað árið 1945 af Bergst. Björnssyni.
 Bilgeymsla teikn. árið 1956 af Fr. Sigurðssyni.
 Gluggabreyting teikn. árið 1981 af Jónh. Bergþórssyni

Stækkun nú = $17,55\text{m}^2 \times 3 = 52,65\text{m}^2$
 Flatarmál húss eftir stækkun = $64,35\text{m}^2$
 Bilgeymsla = $31,40\text{m}^2$
 Rúmmál stækkunar = hús = $126,30\text{m}^3$ +
 kvistir $2,61 \times 4 = 10,44\text{m}^3$ $10,44\text{m}^3$
 samtals $136,74\text{m}^3$



STAÐALHÚS S F

TEIKNISTOFA SÍÐUMÚLA 31 SÍMI 83141

VERKEFNI	DAGS.	1982	VERK NR SU 86
Grunnmyndir, sneiðing og afstöðum.	MKV.	1:100 1:500	
	BR.		
	BLAD NR	1.02	

SIGURDUR GUDMUNDSSON SIGURDUR P KRISTJÁNSSON FTFÍ