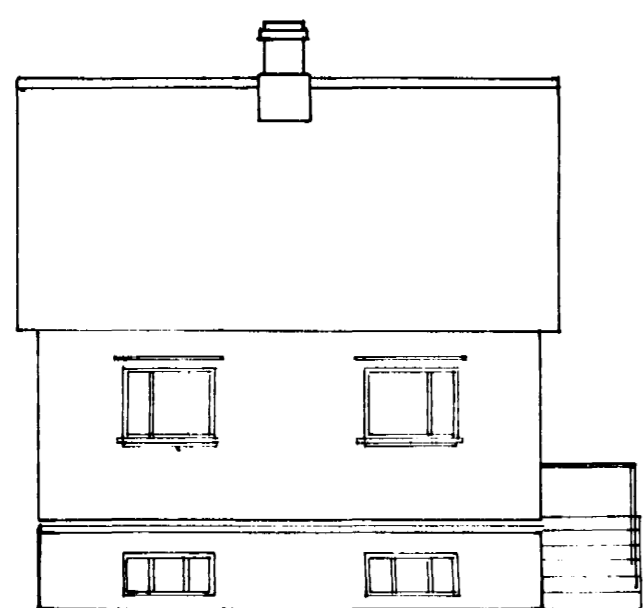
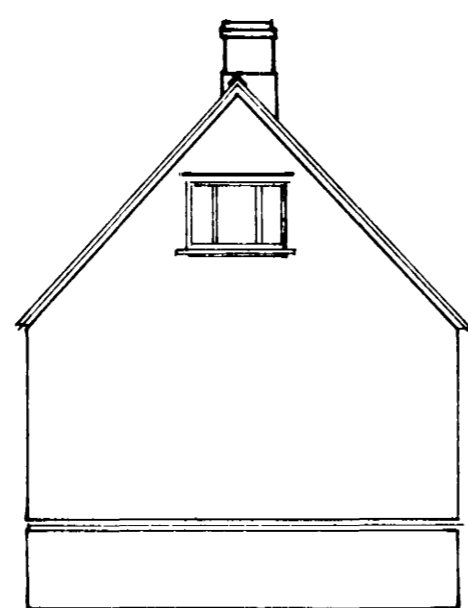


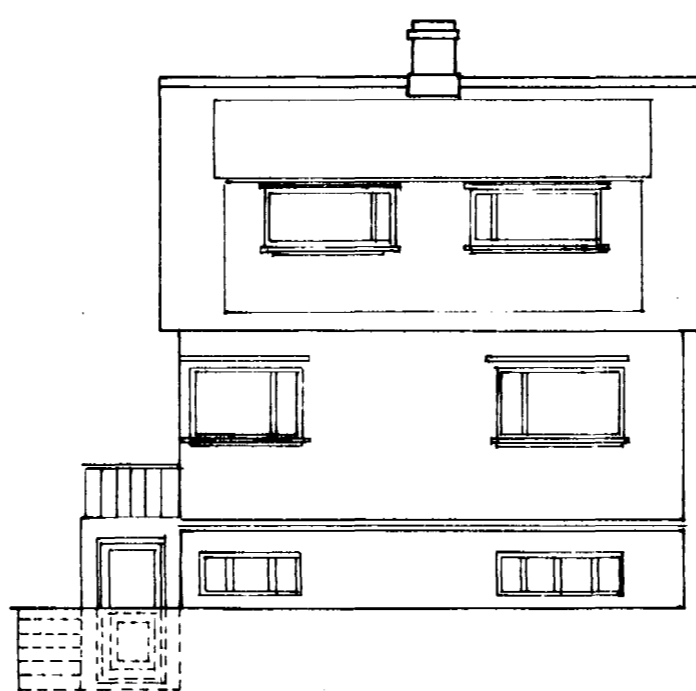
Íbúðarhús við Holtsgötu No: 8.
Eftir breytingu á gluggum.



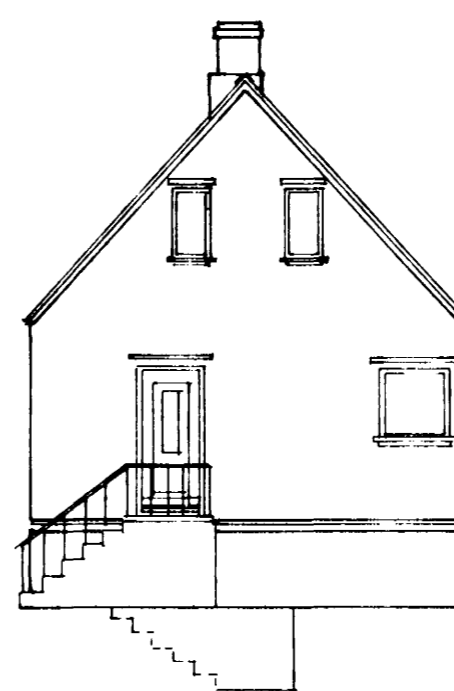
Götuhlíð.



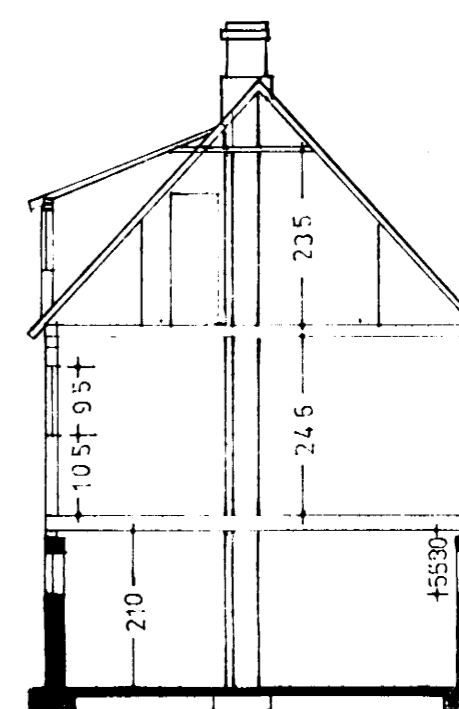
Suðurgafli.



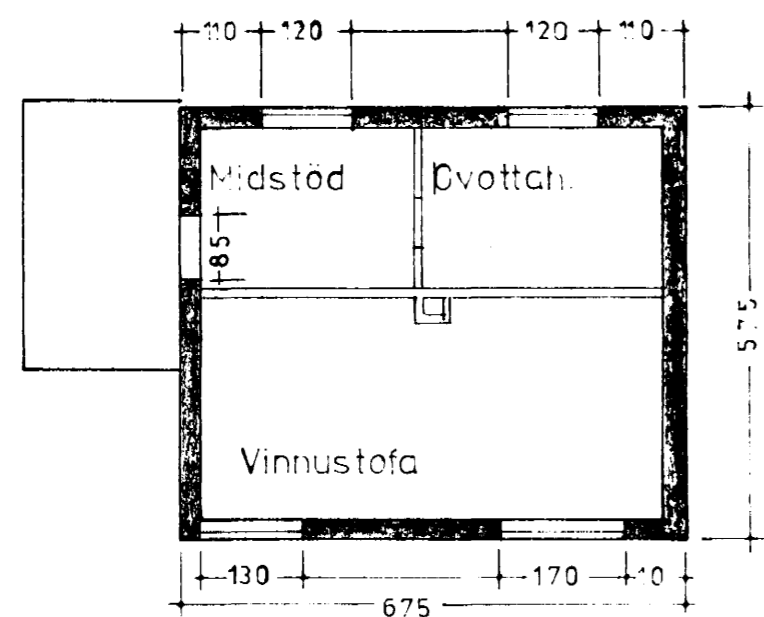
Bakhlíð.



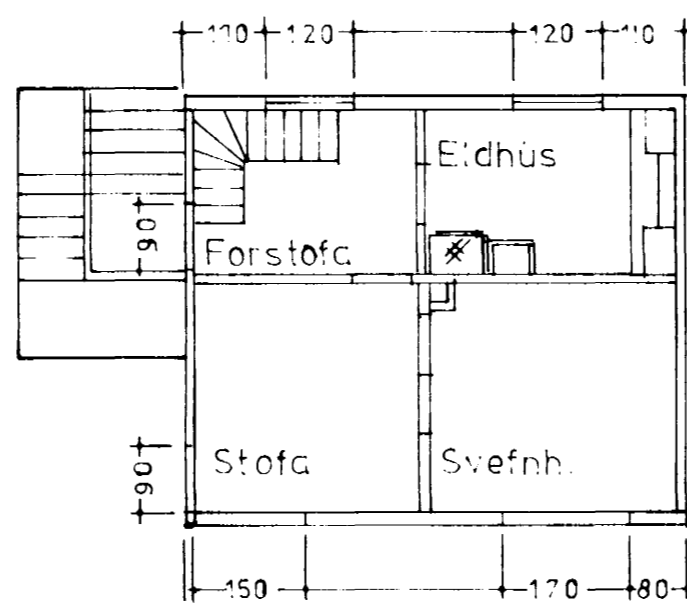
Norðurgafli.



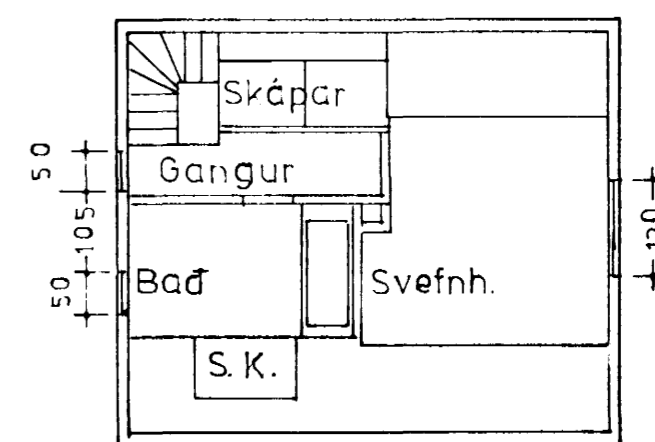
Skurður.



Kjallari.



Mið hæð.



Rishæð.

dags 1. febr. 1974.

SG. Bjarni Kristjánsson