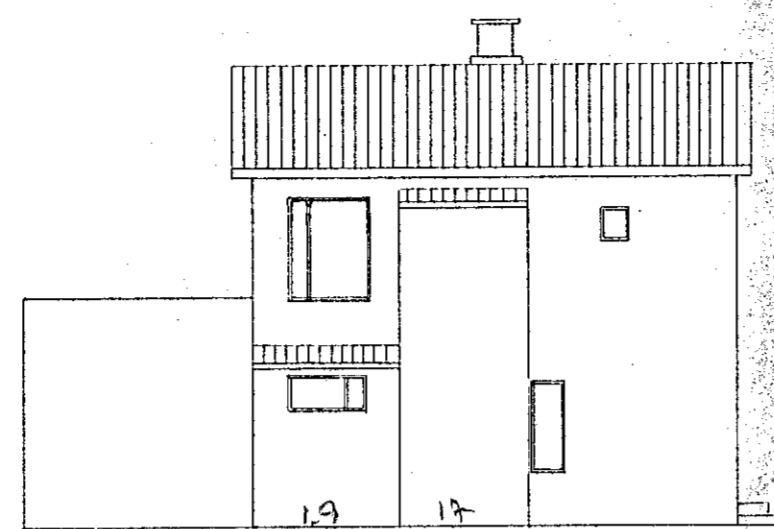
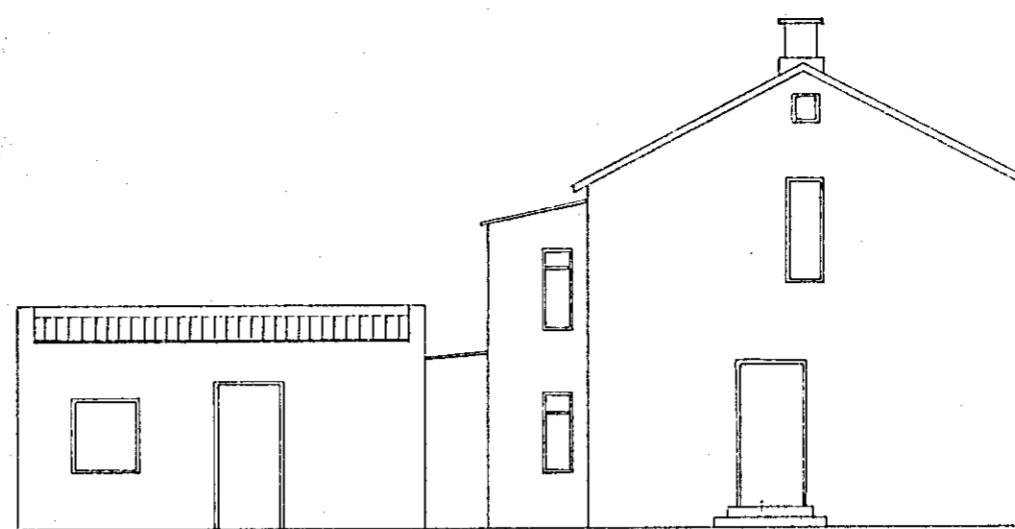


AUSTUR

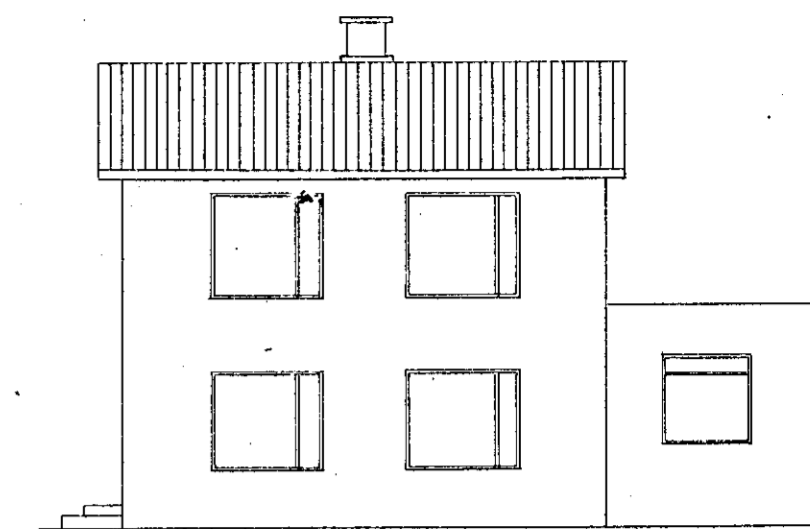
FYRIR BREYTINGU



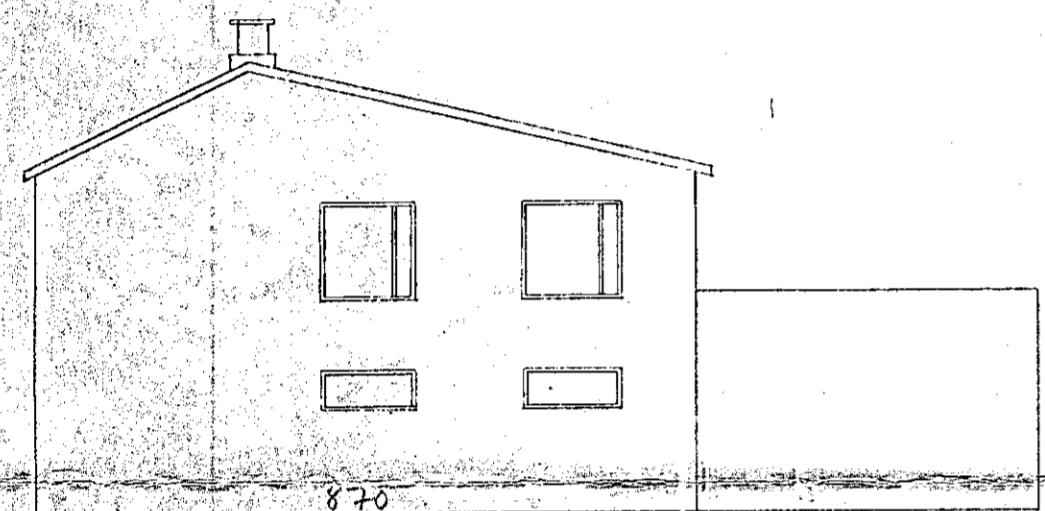
NORDUR



VESTUR

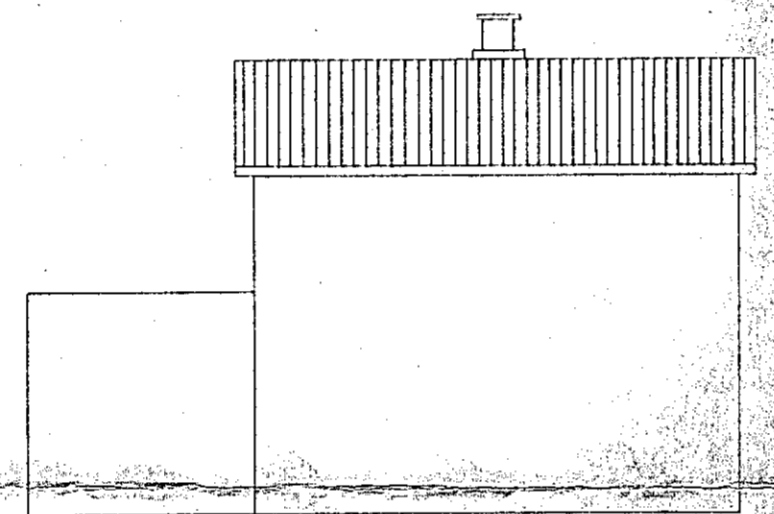


SUÐUR

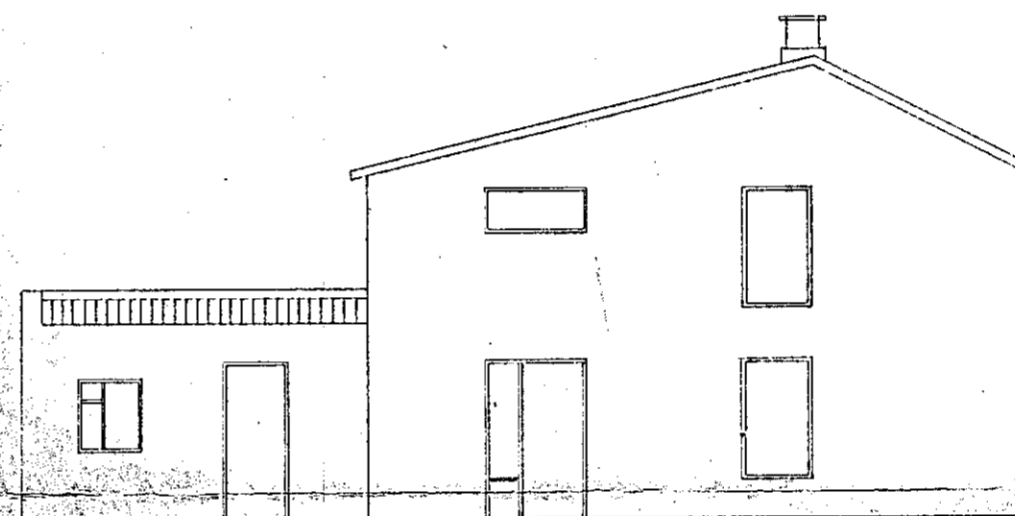


AUSTUR

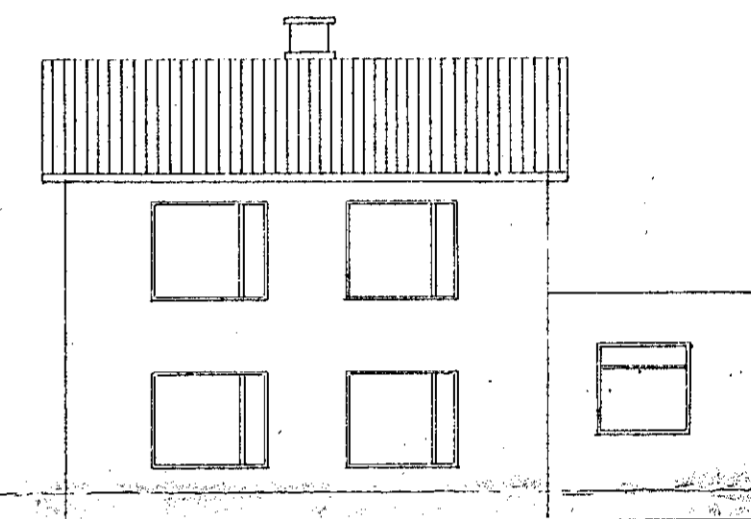
EFTIR BREYTINGU



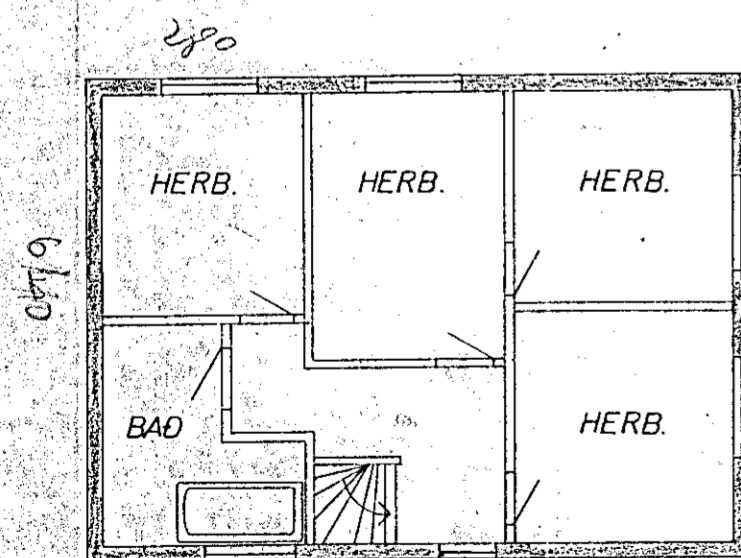
NORDUR



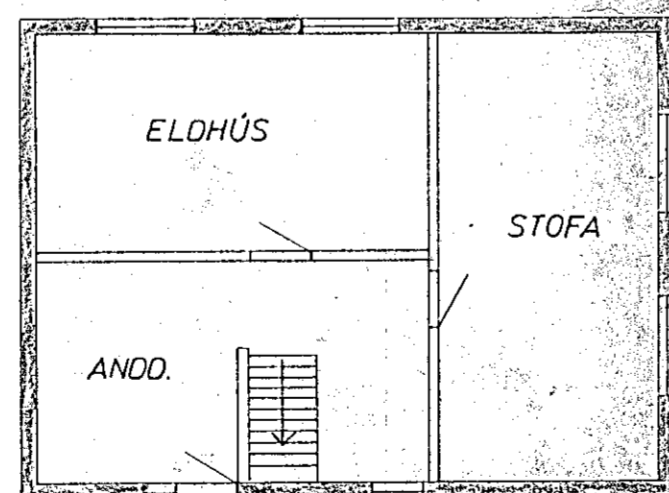
VESTUR



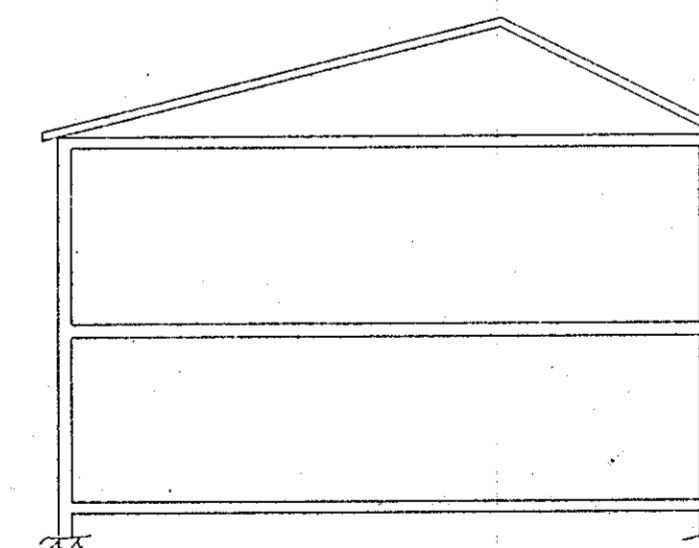
SUÐUR



GRUNNMYND 2. HÆÐ



GRUNNMYND 1. HÆÐ



SNIÐ

Samþykkt á fundi bygginga-
nefndar þ. 22. 5. 1974
BYGGINGAFULLTRÚINN
Í HAFNARFIRDI
F. Sigurðsson

Kvöðum að viðbyggingun
hafi ekki áhrif á bótaskeplu
þ.e. til nokkunnar á bóta-
fjárfel, ef þarf at taka húsið
eignarmanni vegna skiptidags.
F. Sig.

17,9 m² / 19 - / 190 m² / Flami

21 x 19 = 3,99 m² x 2,2 = 8,8 m²
1,7 x 1,7 = 2,89 m² x 4,2 = 12,1 m²

19 m²

N.B. HÚS ÚR TÍMBRI

HÖRDUVELLIR 1	MÆLIKVARDI 1:100	VERK	TEIKN NR
BREYTING	Hannað: <i>JSB</i> Teiknað: <i>JSB</i>	Yfirlitarið: Samb: <i>JSB</i>	DAGS MAI '74
JÓHANN GUNNAR BERGPÓRSSON VERKFR MVFI STRANDGÖTU 11 — HAFNARFIRDI — SÍMI 53315	BREYTT		