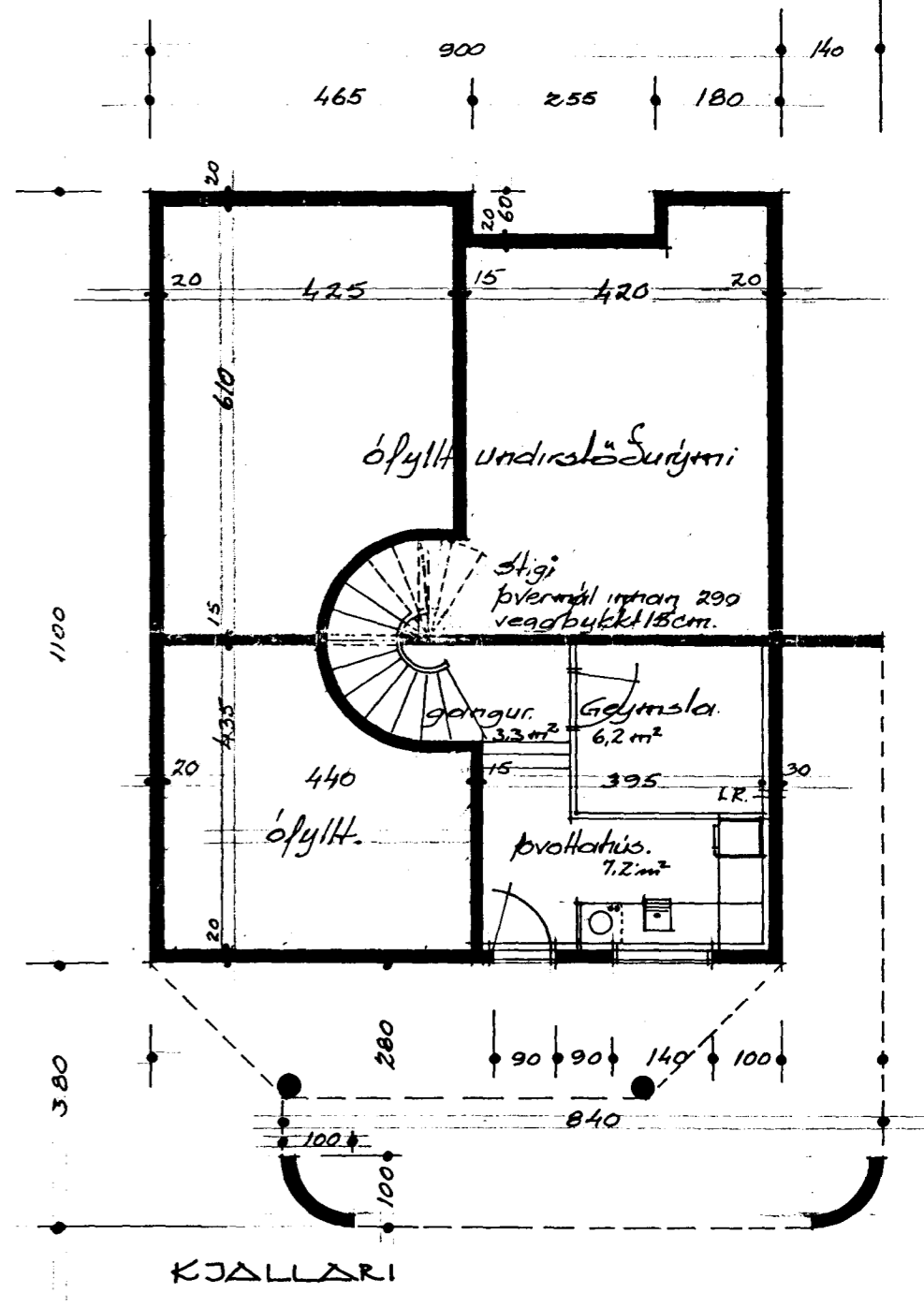
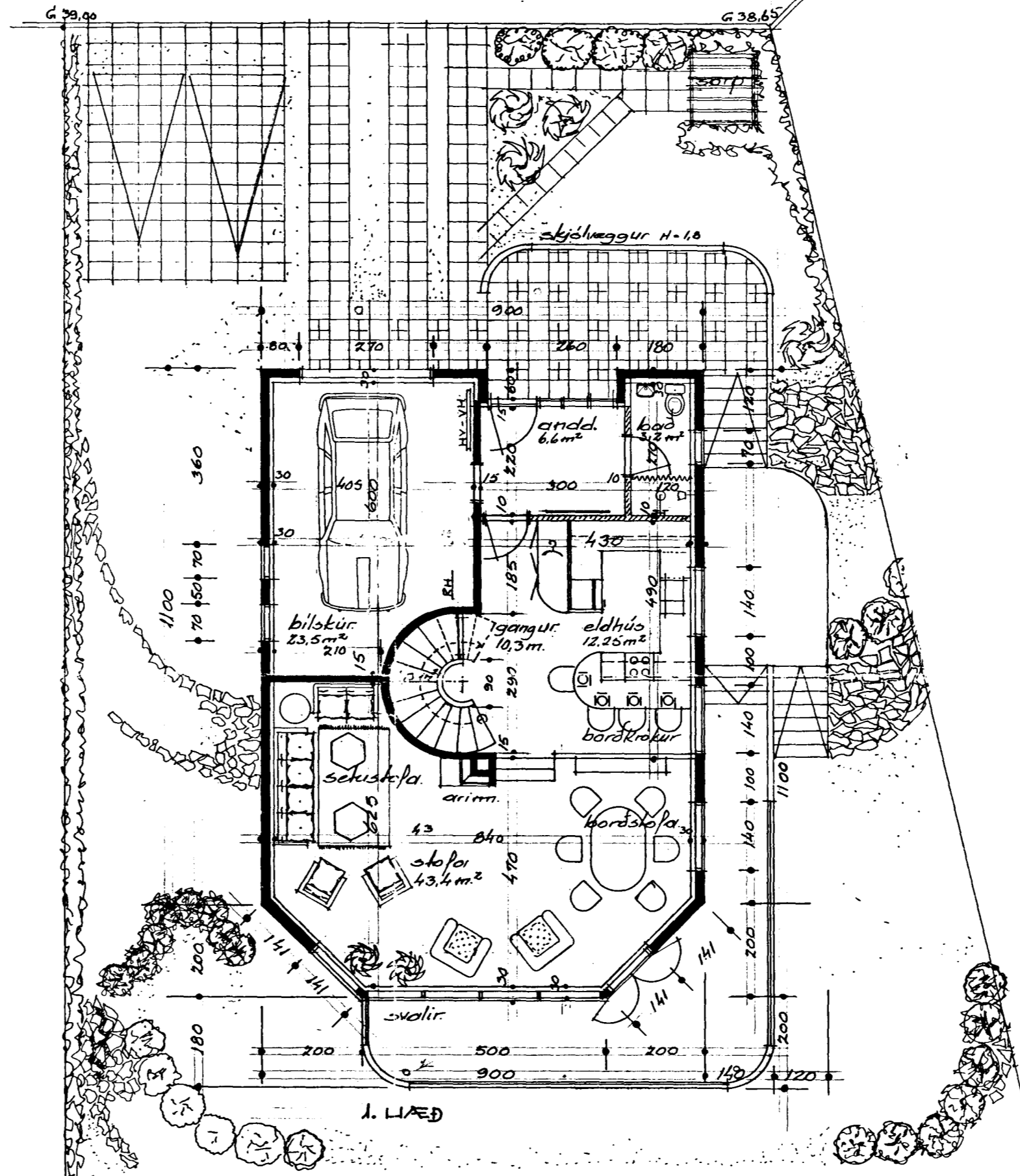
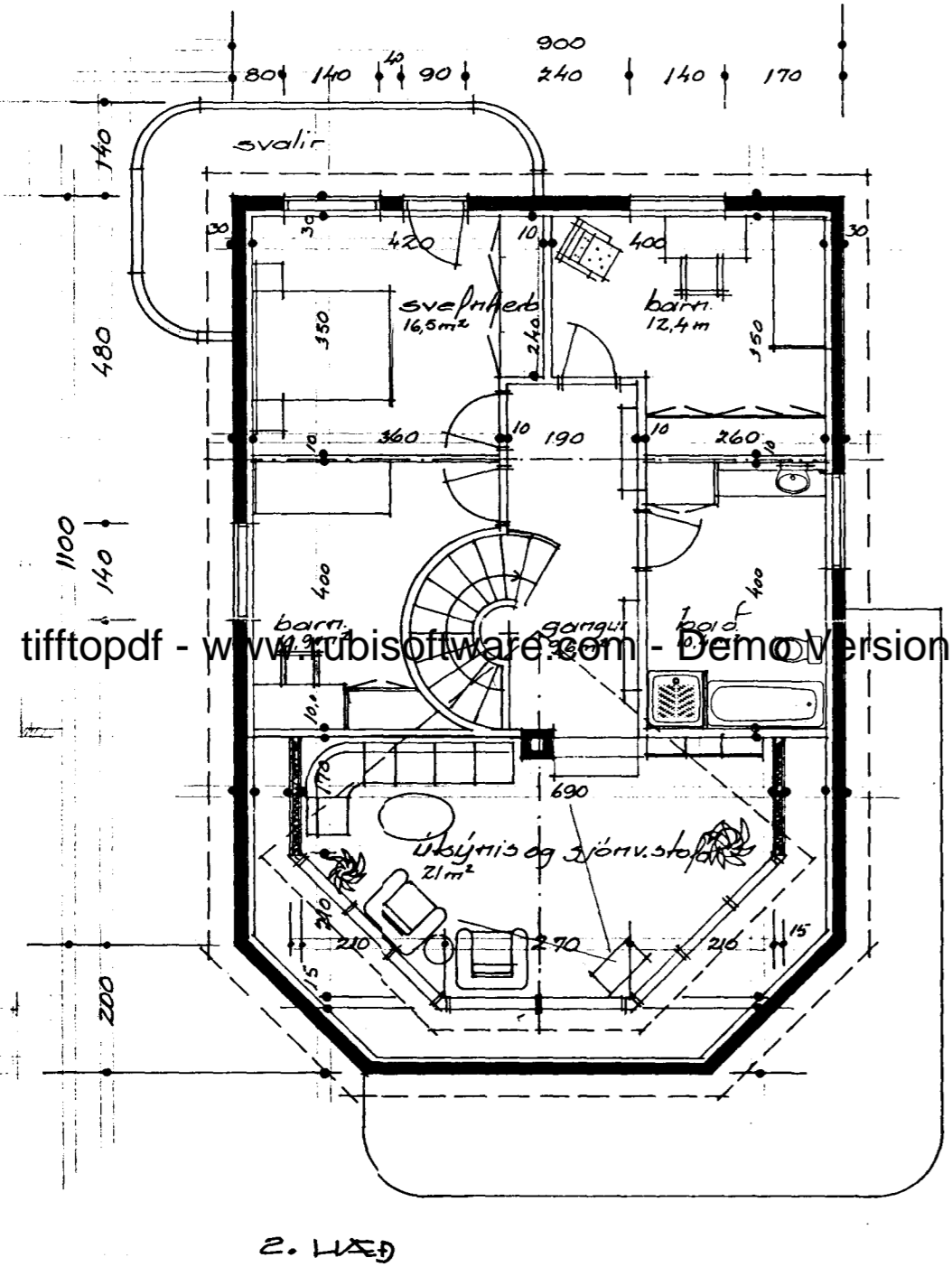


Stærðir samkv. 15T 50	Frádráttur samkv. lánareglum Húsn.st.	
Kjallari 23 m ²	62 m ³	4 m ²
1. hæð 111,4 m ²	307,8 m ³	37,07 m ²
2. hæð 95,7 m ²	295,6 m ³	12,7 m ²
Samtals 230 m ²	665,4 m ³	50,7 m ²
NÝTINGARHLUTFALL $\frac{230}{901,3} = 0,255$		



Att: Reykgangur skorsteins sé ϕ 25 cm.
Skorstein skal einangra utan m. 75 mm. skul.
og murtrúða.

Veggur milli bilstúrs og íbúðariz.91 þá
Lóðarmörkum braytt 5.9.190

Hörgsholt 17 Hafnarfirði
Gravenmyndir
Málkvæði 1:100 Júní 1990
Baldurinnsson