

# HÖRGSHOLT 21

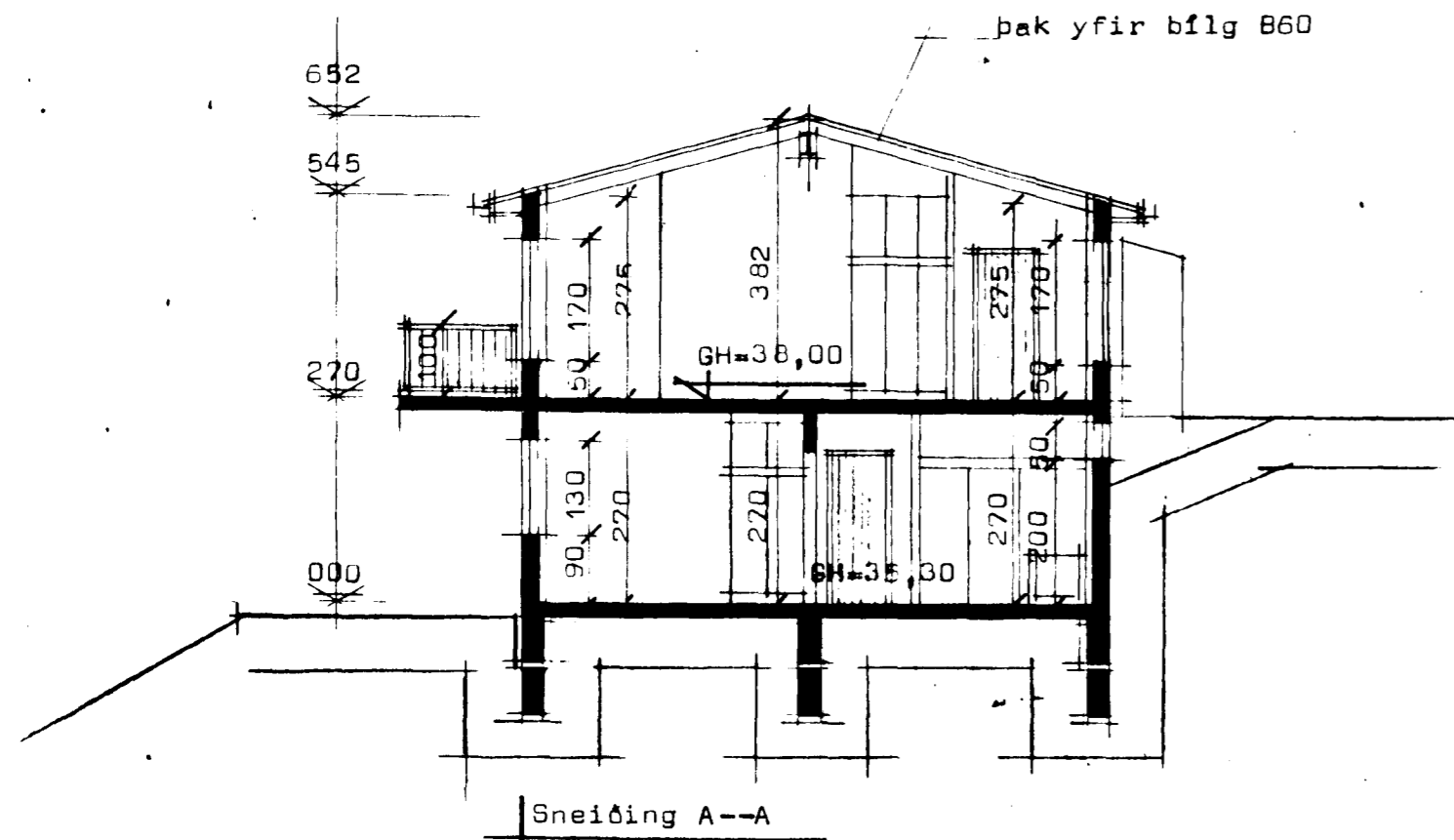
Hafnarfirði

Serþykkt á fundi bygginga-  
nefndar þ. 17.13.1993

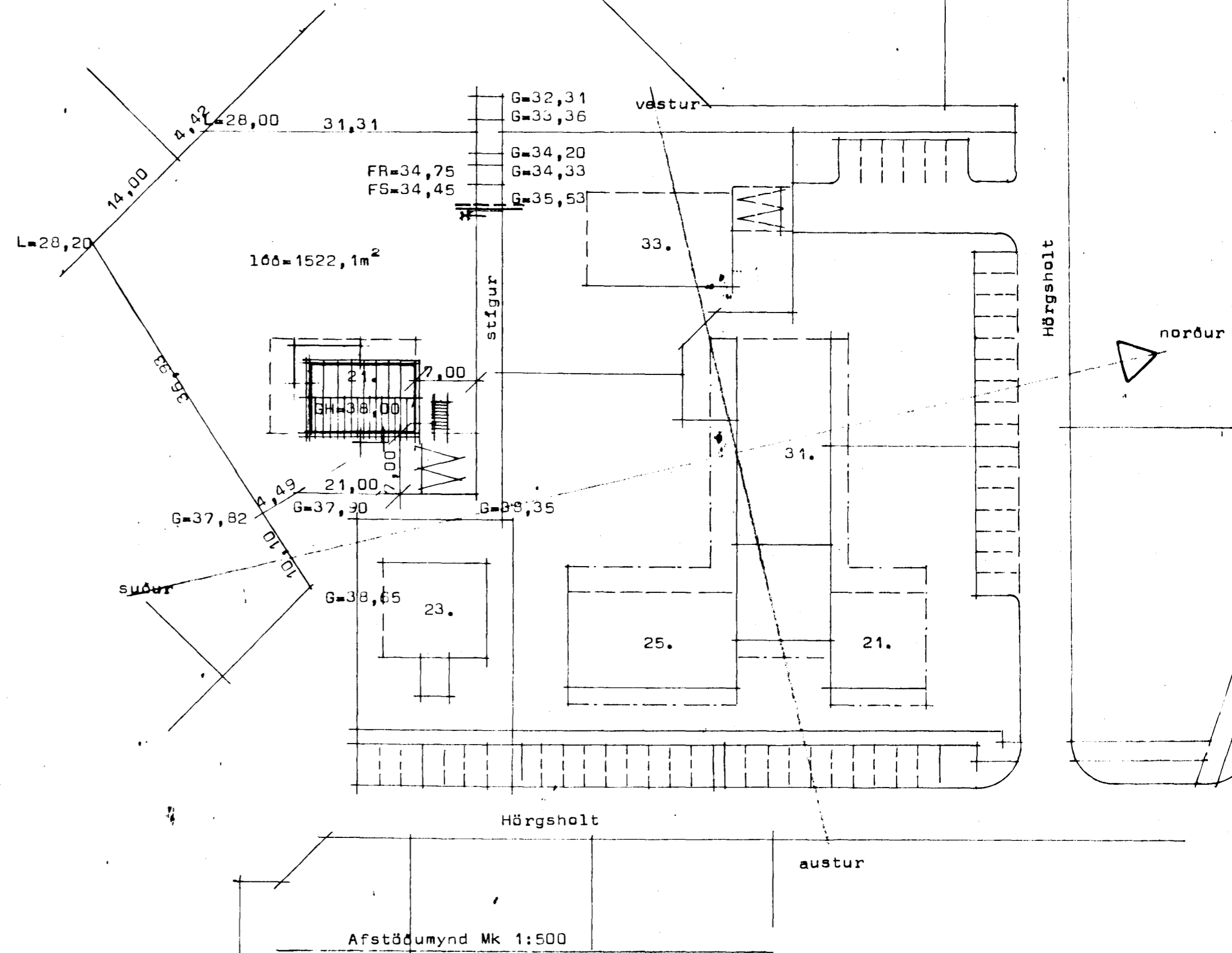
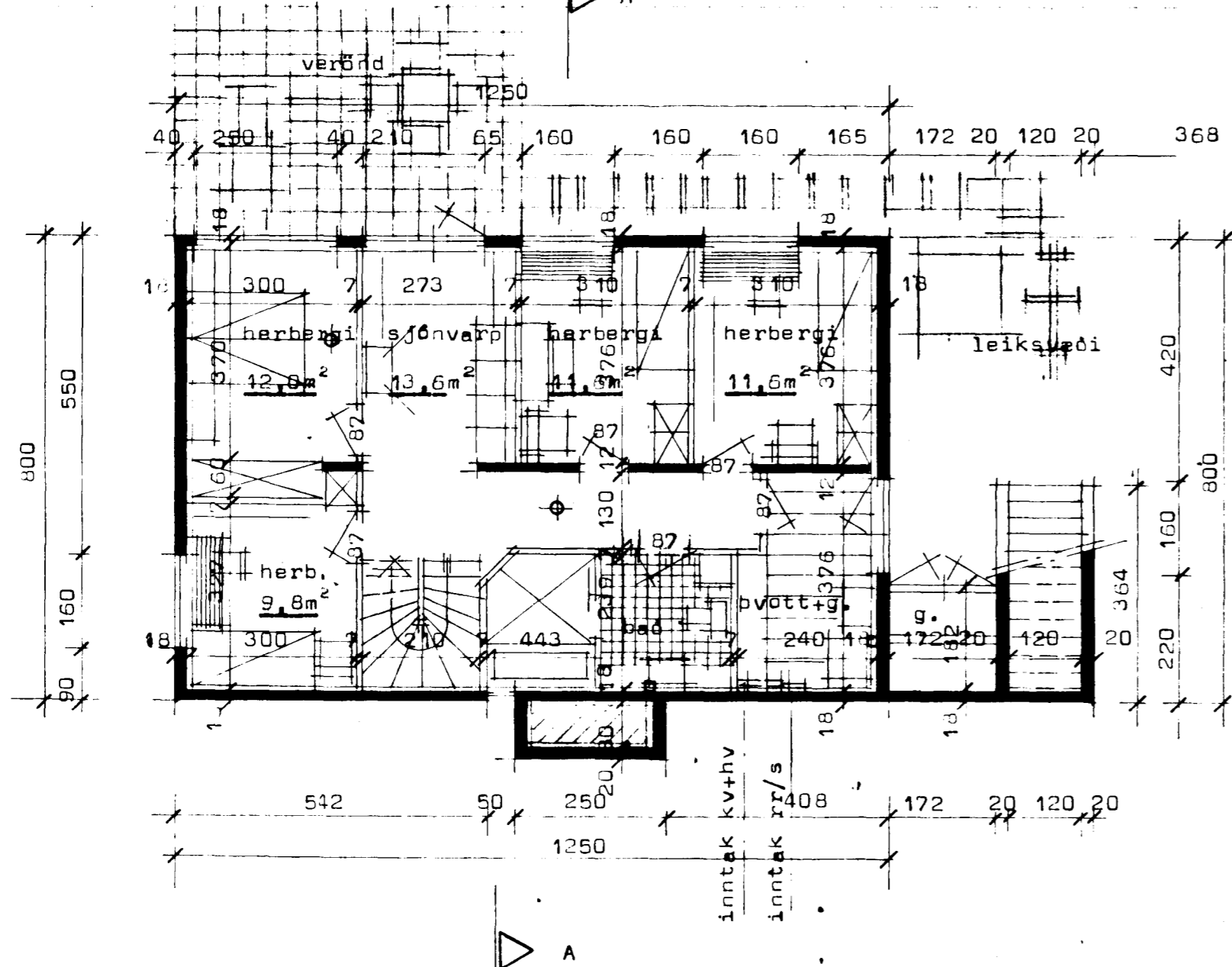
BYGGINGAFULLTRÚINN  
Í HAFNARFIRÐI

*Sigurður P. Kristjánsson*

Flatarmál neðri hæðar ..... 103,84 m<sup>2</sup>  
 Flatarmál efri hæðar ..... 100,00 m<sup>2</sup>  
 Heildarflatarmál ..... 203,84 m<sup>2</sup>  
 Heildarrúmmál ..... 608,86 m<sup>3</sup>  
 Nýtingarklutfall ..... 0,133  
 Ír merkir loftrás  $\phi$ 125mm.

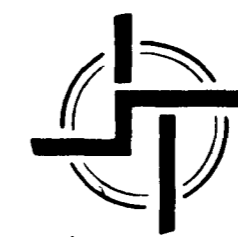


tifftopdf - www.rubissoftware.com - Demo Version



Kólnunartölur K  
 Þak ..... 0,20 w/m<sup>2</sup>°C  
 Gólf ..... 0,30 w/m<sup>2</sup>°C  
 Ötveggir ..... 0,80 w/m<sup>2</sup>°C vegið meðaltal.

⊕ merkir reykskynjari  
 □ merkir loftrás  $\phi$ 125mm



## STAÐALHÚS

TEIKNISTOFA SÍÐUMÚLA 31 SÍMI: 813141 FAX: 813149

VERKEFNI	DAGS. febr 1993	VERK NR
Grunnmynd, sneiðing og afstöðum.	MKV. 1:100 1:500	93-04
Hörgsholt 21 Hafnarfirði	BR.	
	BLAD NR 1.01	

*Sigurður P. Kristjánsson*  
 SIGURÐUR GUÐMUNDSSON SIGURÐUR P. KRISTJÁNSSON FTPI