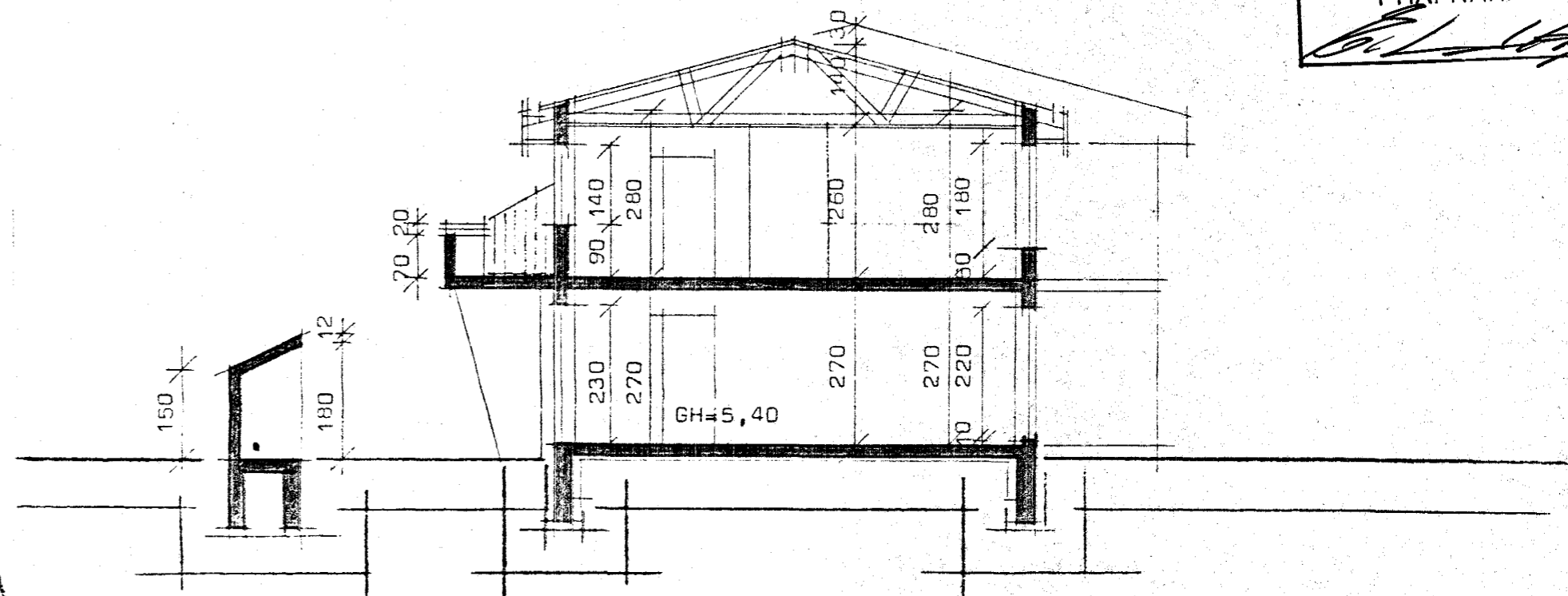


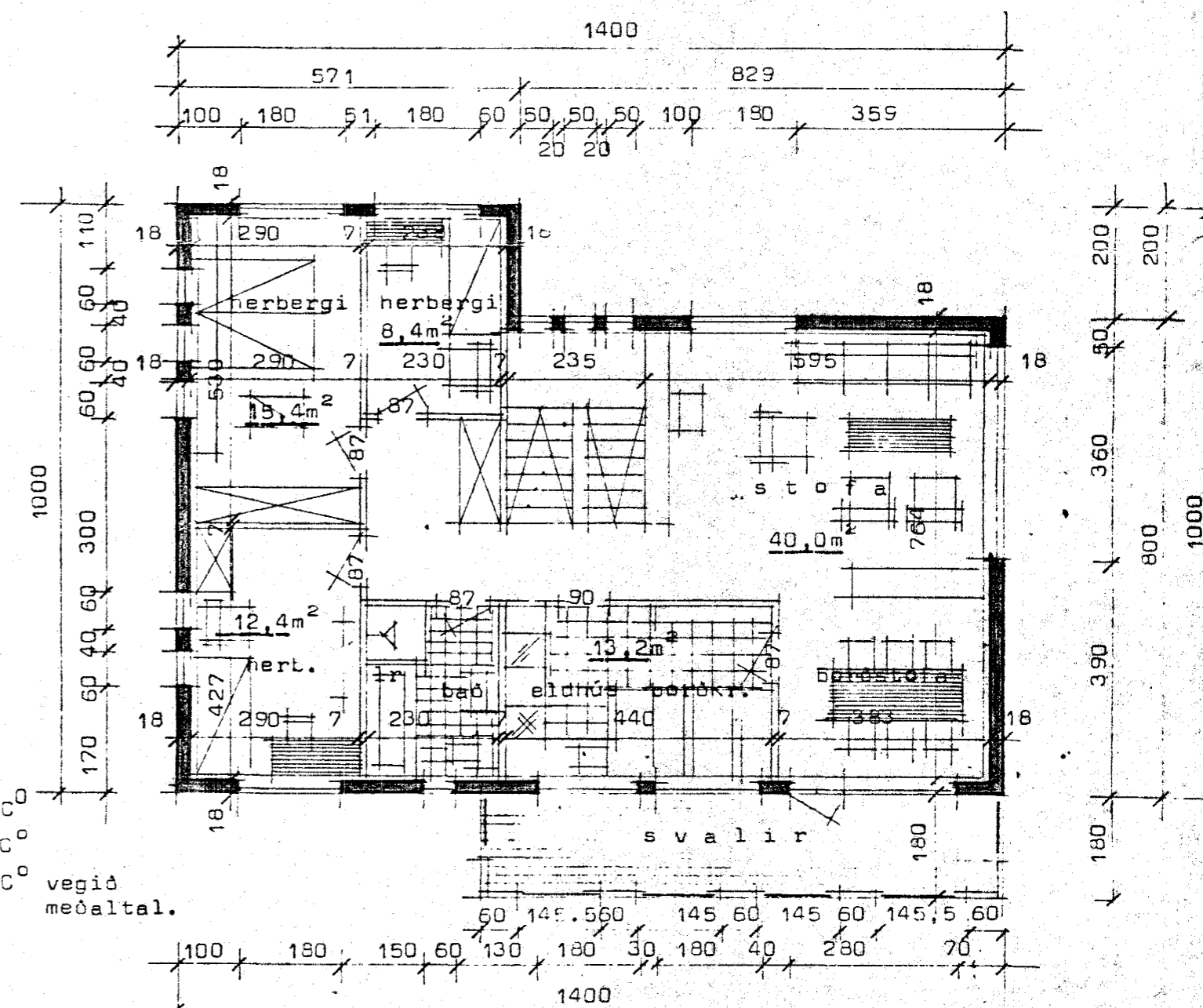
tiftpdf - www.rubissoftware.com - Demo Version

G=5,10

G=5,43



Sneiðing í hús.

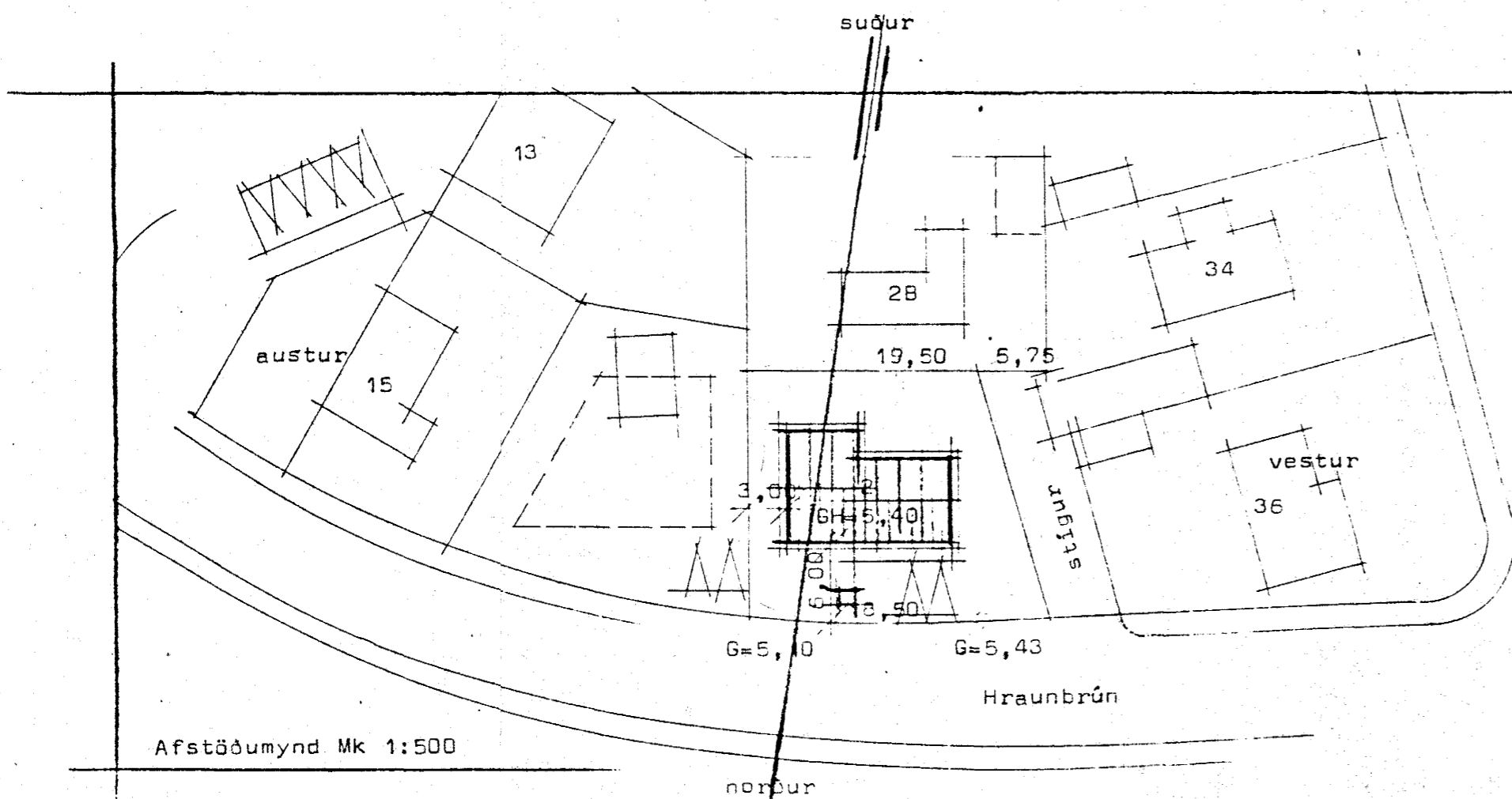


- Ólnunartölur K
- sk ..... 0,20 w/m<sup>2</sup>C<sup>0</sup>
  - lf ..... 0,30 w/m<sup>2</sup>C<sup>0</sup>
  - veggir ... 0,60 w/m<sup>2</sup>C<sup>0</sup>

- flatarmál neðri hæðar 123,42 m<sup>2</sup>
- flatarmál efri hæðar 123,42 m<sup>2</sup>
- heildarflatarmál 246,84 m<sup>2</sup>
- lúmmál húss 760,50 m<sup>3</sup>
- lýtingarhlutfall 0,52
- r merkir loftrás  $\phi$ 125 mm.

HÚS TEIKNAD AF STADALHÚS 9/F 1987.  
TEIKNAD ÍBÚÐ Í KJALLARA Í ÁGÚST 1989  
SIG. ÞORVARÐAR. BYGGINGAÆF. BFI. STRANDS. 11.220 HF. S. 65/S/D.

*h.p.*



Afstöðumynd Mk 1:500

G=5,10

G=5,43

Hraunbrún