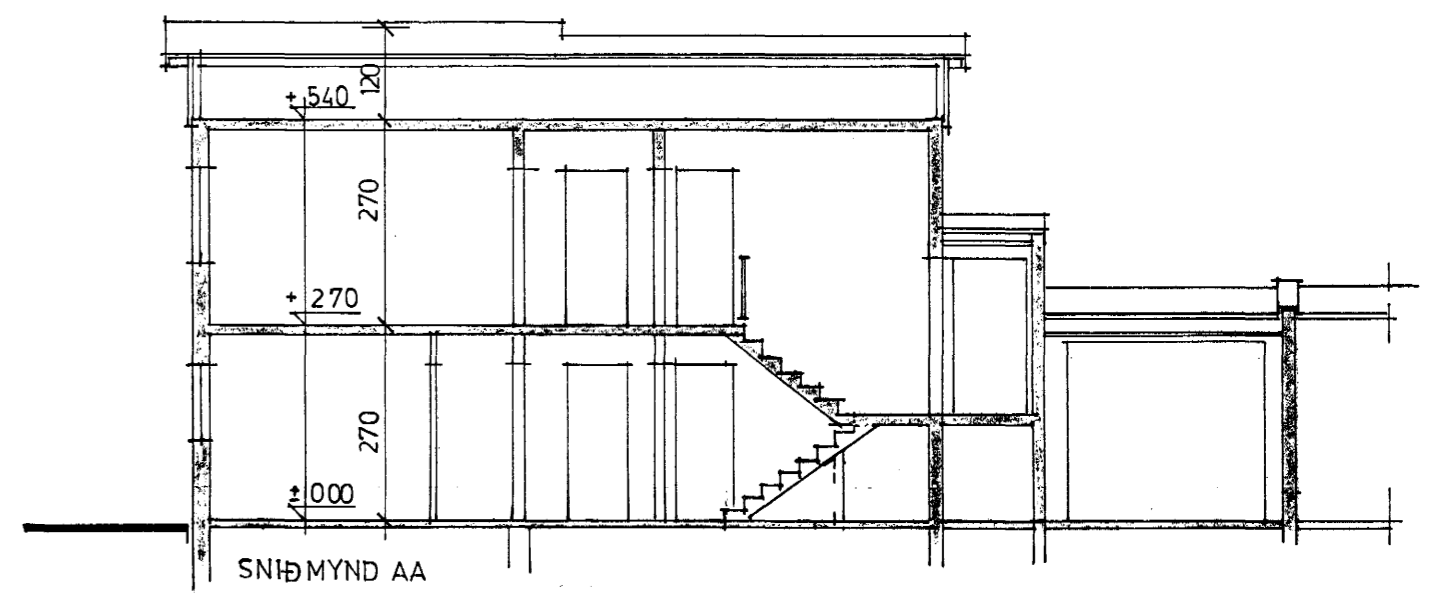
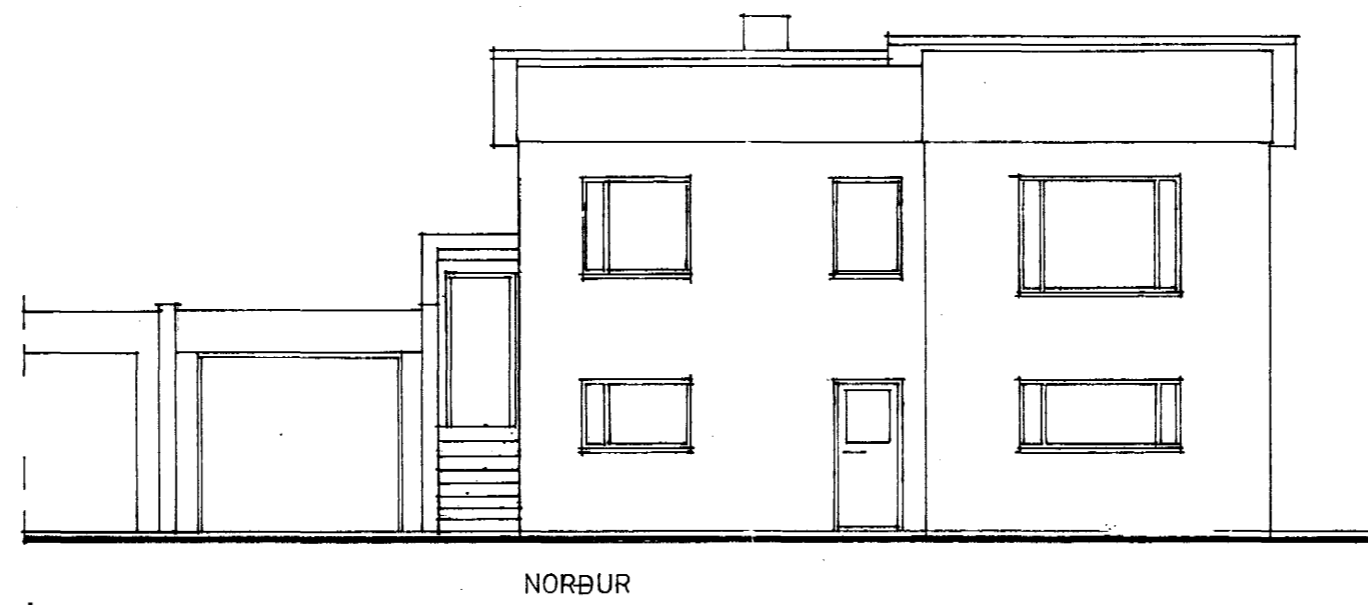
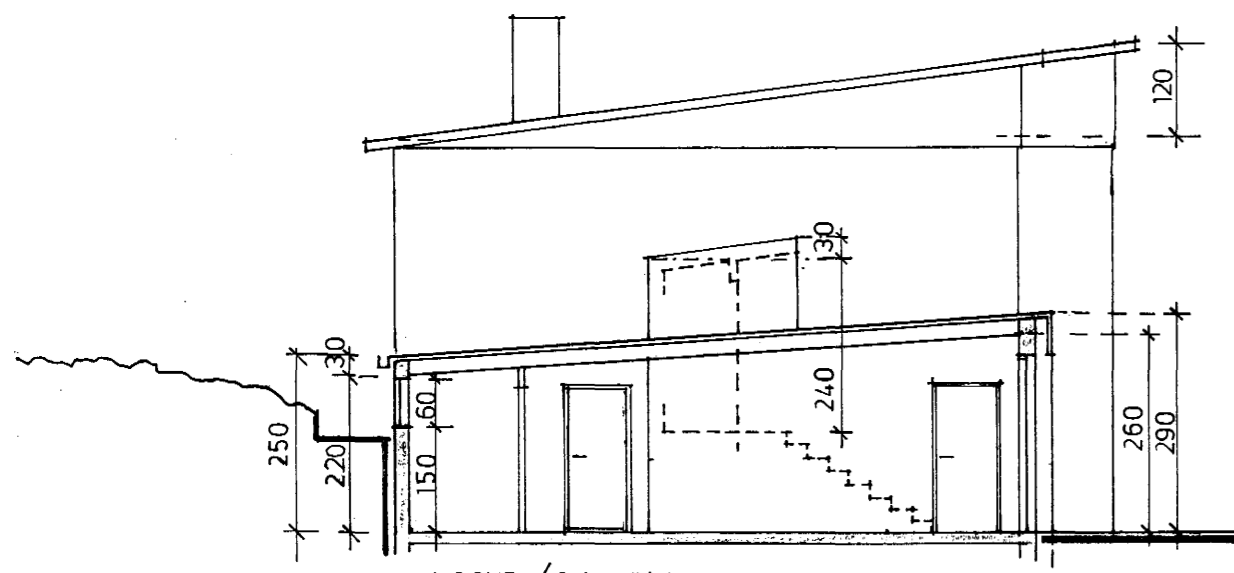
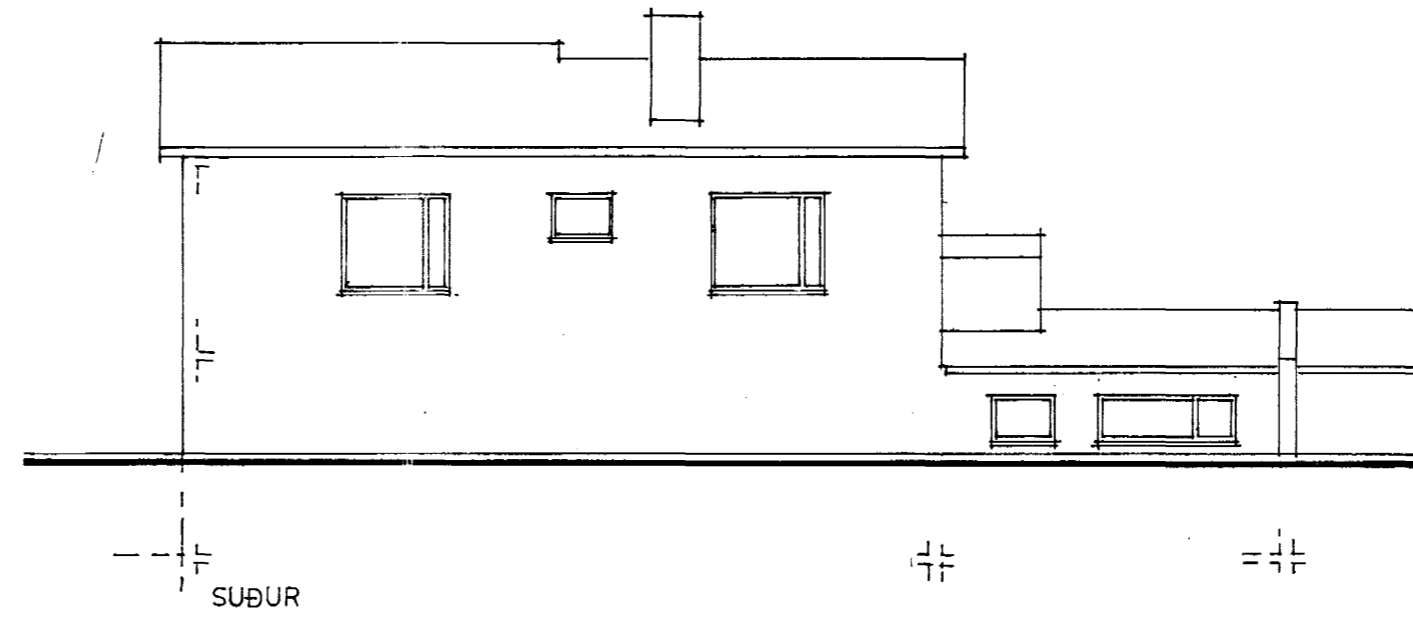
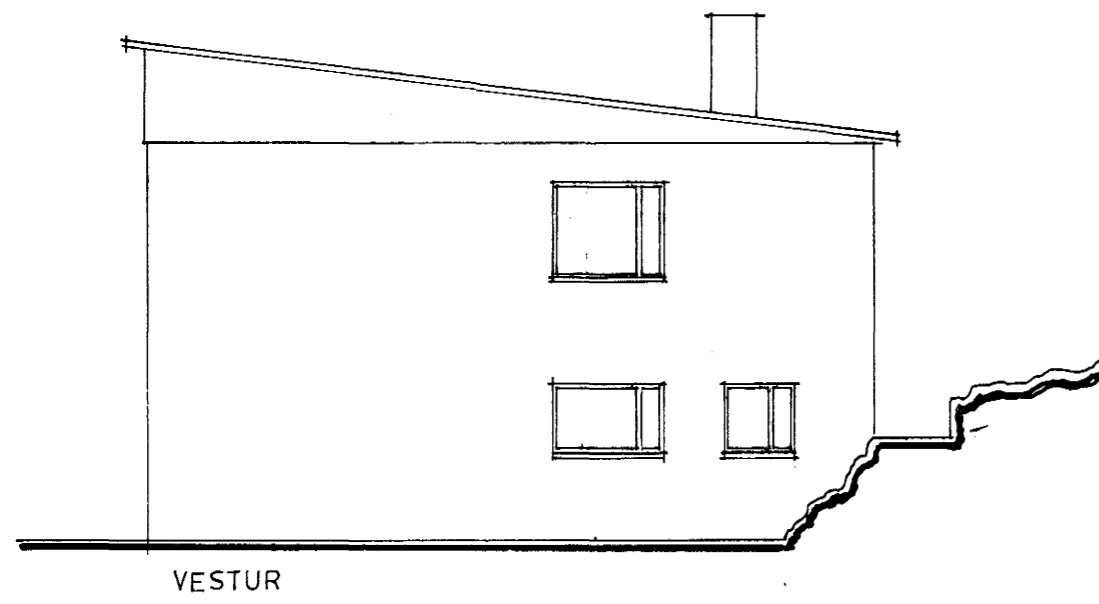
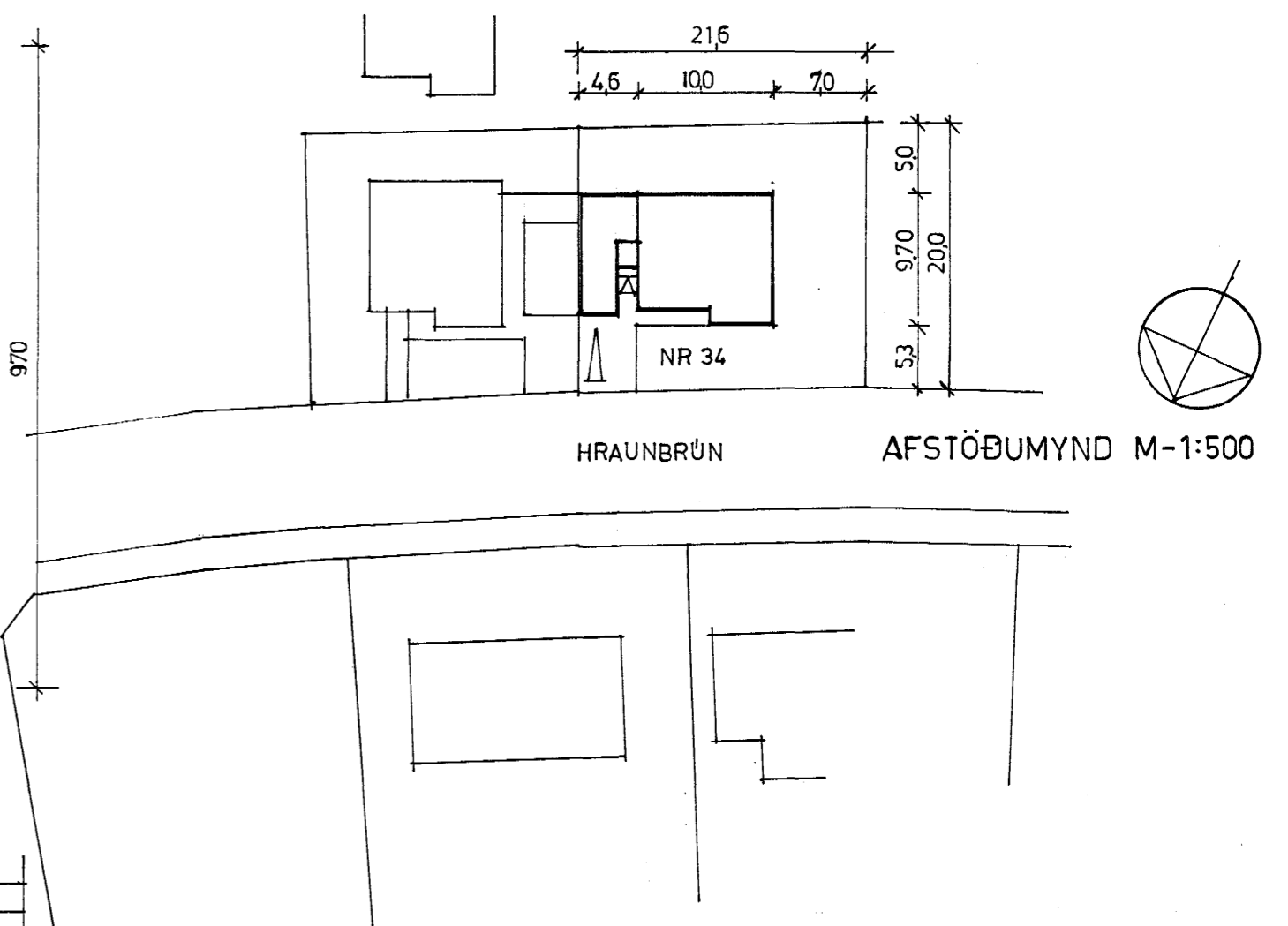
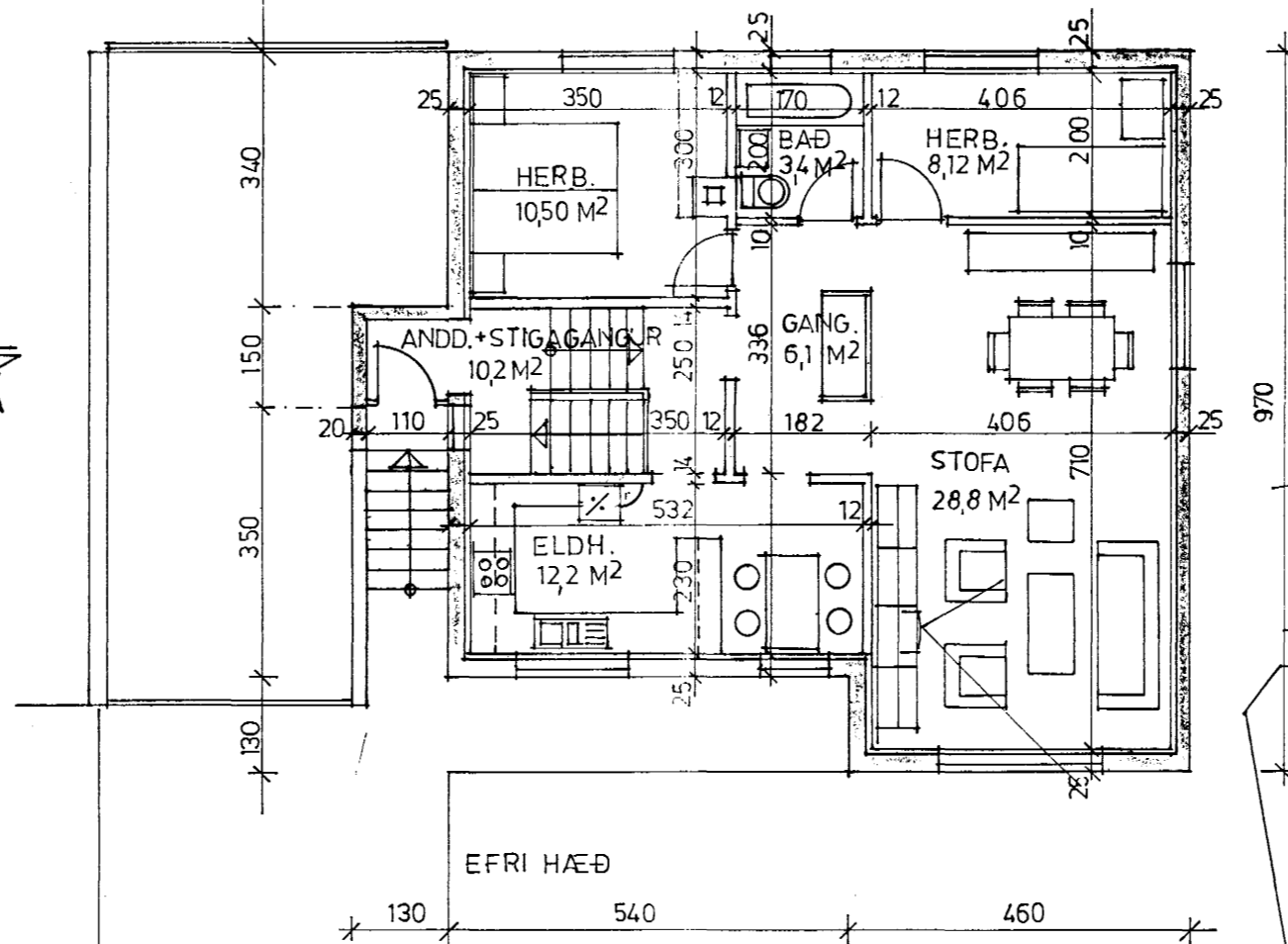
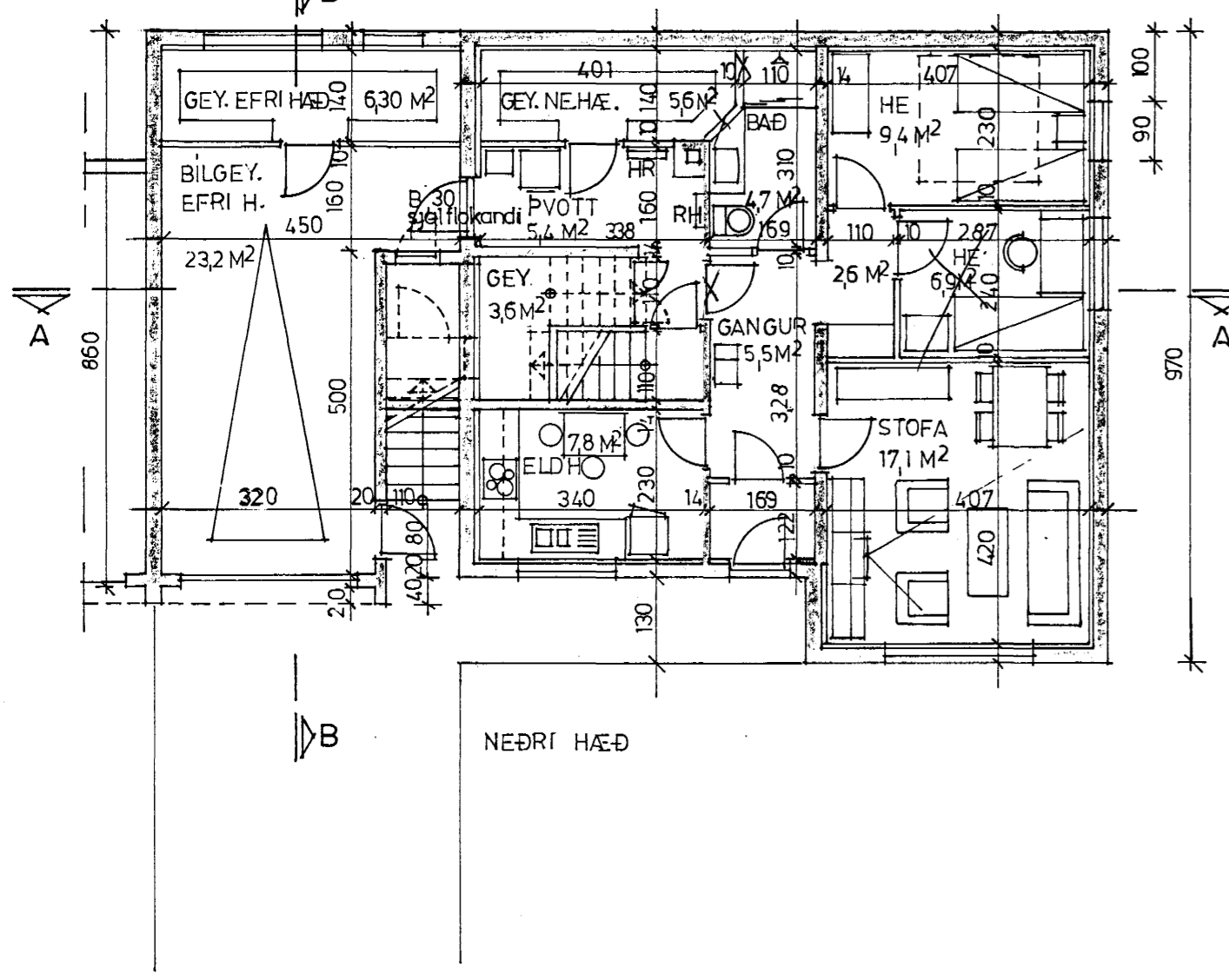


Gamla og fundi byggja  
 nafnið p. 2014  
 Sigurbjörn Hallgrímsson



tiffpdf - www.rubissoftware.com - Demo Version



Brúttóstærðir	Flatarmál	Rúmmál
íbúð efri hæð	92,0 m <sup>2</sup>	
íbúð neðri hæð	74,3 m <sup>2</sup>	
sameign pvoðtah.	7,4 m <sup>2</sup>	1b.556,9 m <sup>3</sup>
bilgey + geve.h.	3,3 m <sup>2</sup>	92,6 m <sup>3</sup>
Iús n. bílgalls	208,3 m <sup>2</sup>	649,5 m <sup>3</sup>

Sigurbjörn Hallgrímsson

HRAUNBRÚN 34, HAFNARFIRDI  
 Grunnm., útlit, sniðm. afstm.  
 breytt grunnmynd, neðri h.  
 M-1:100, 1:500, 25.04.1992  
 Sigurbjörn Aðalsteinsson,  
 arkitekt FAÍ, sími 54611