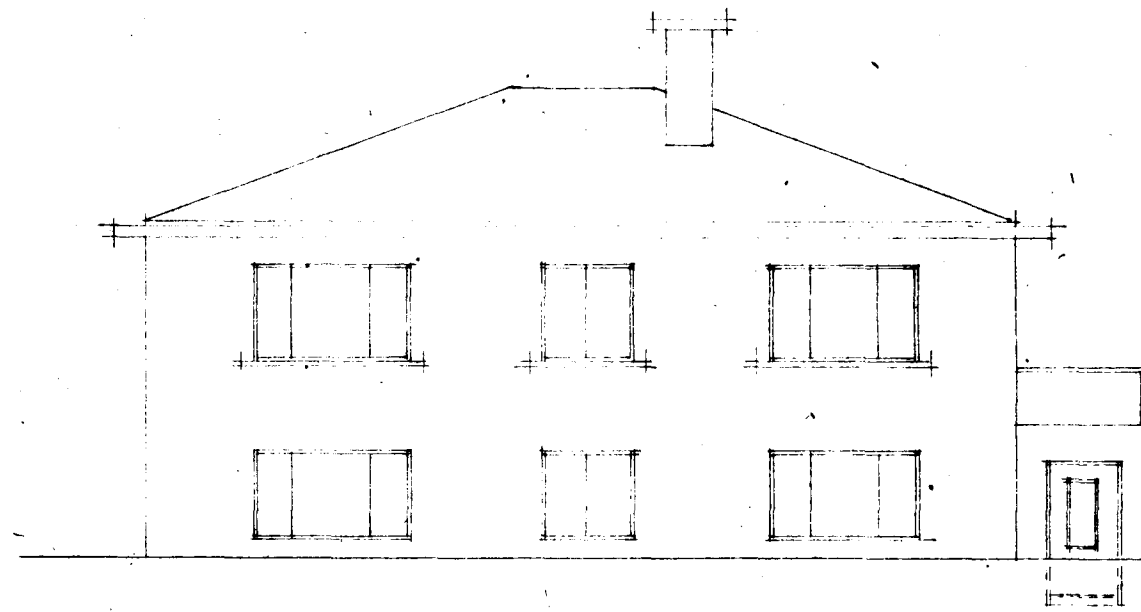
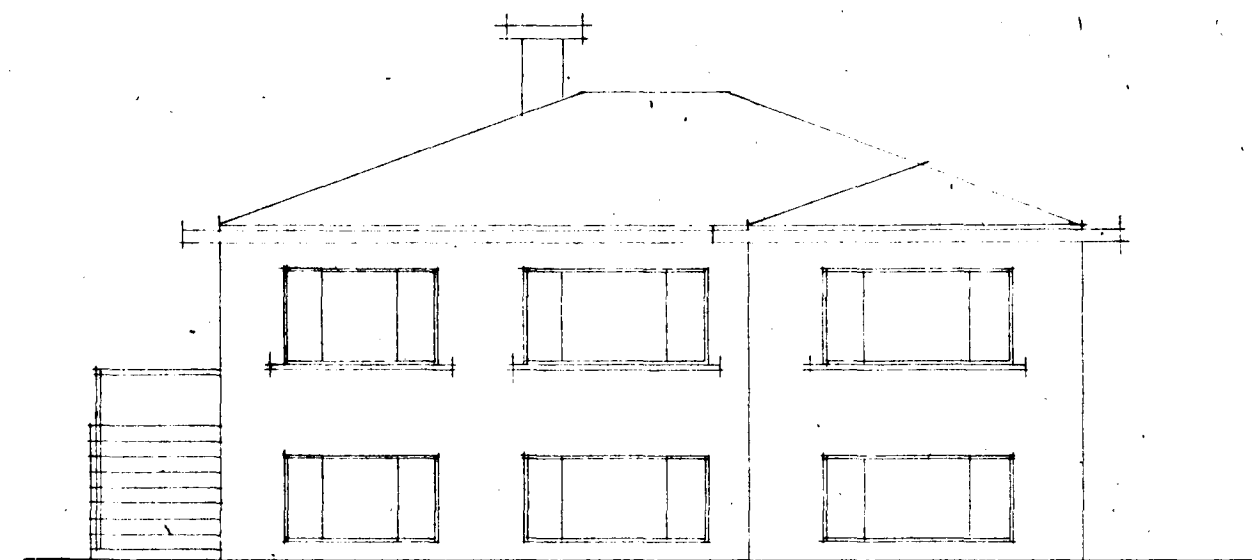


Hús Jóhannesar G. Einarssonar við önefnda götu í Hafnarfirði  
 Hraunhlavammur m.ú M 1:100

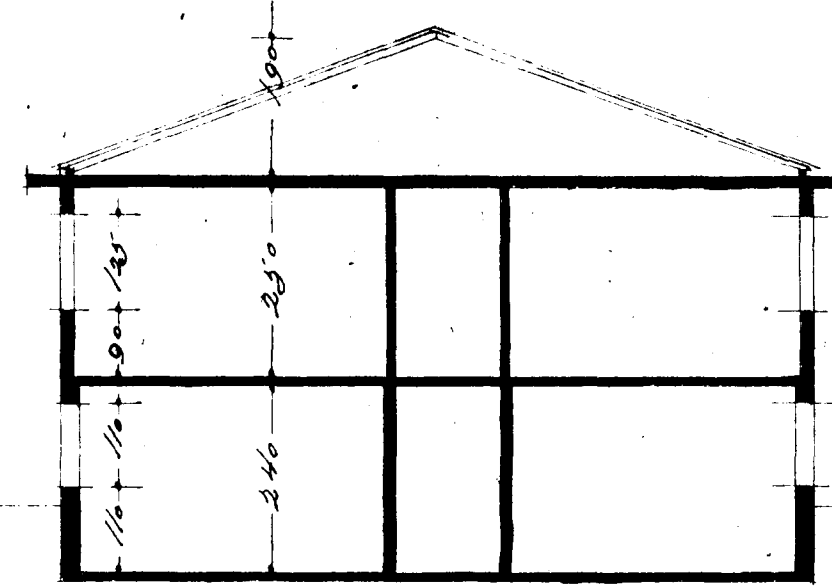
Sæup.  
 13/8.46



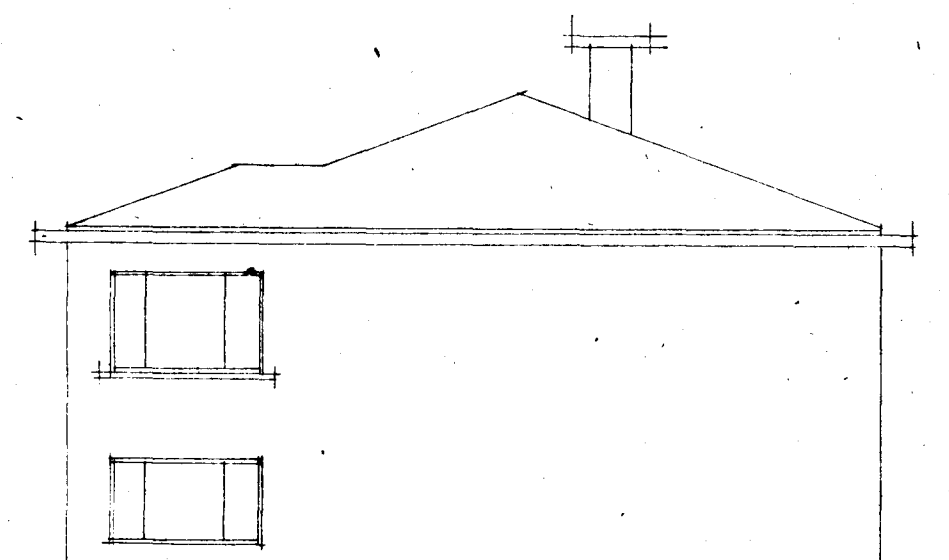
Vestur



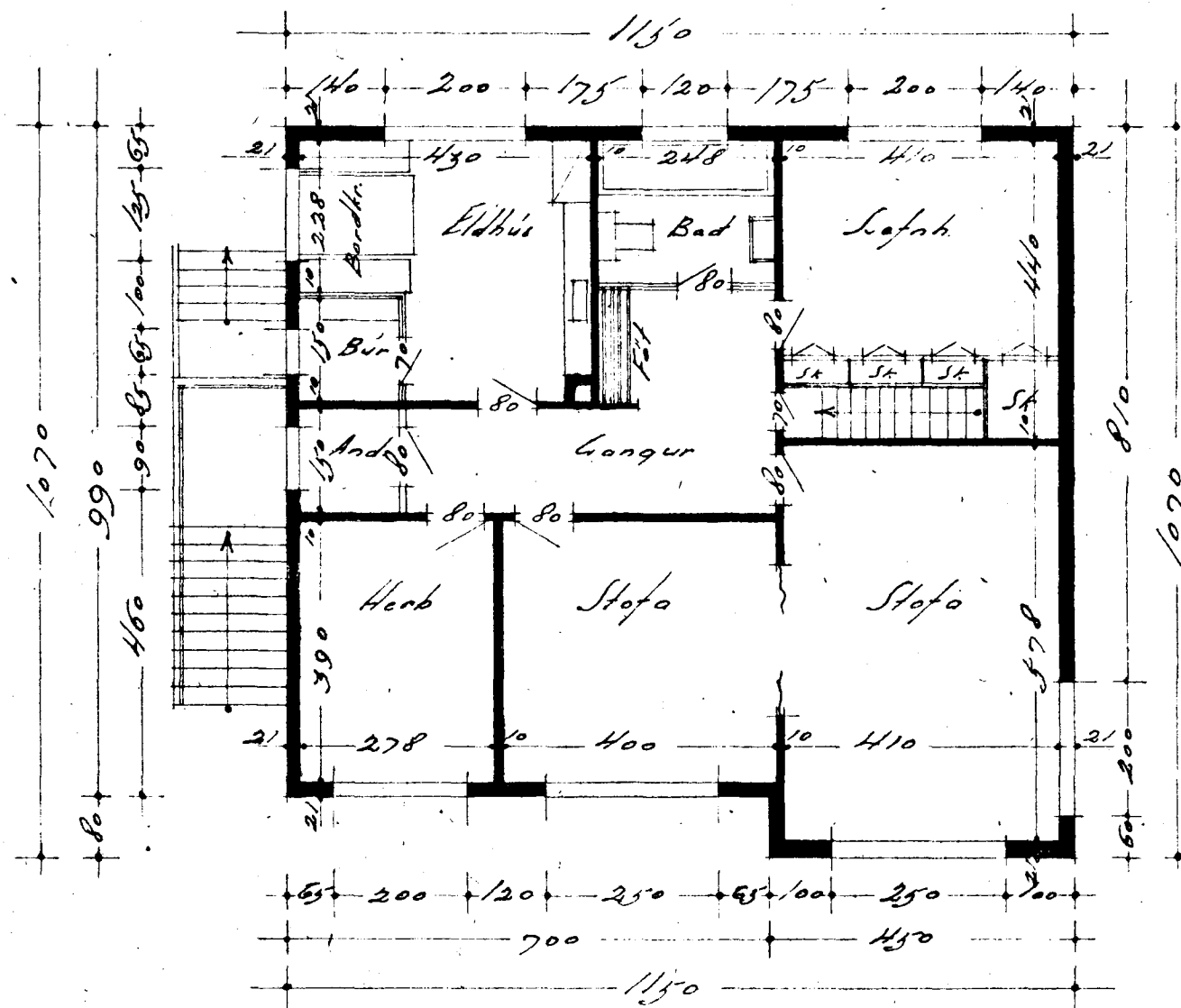
Sudur



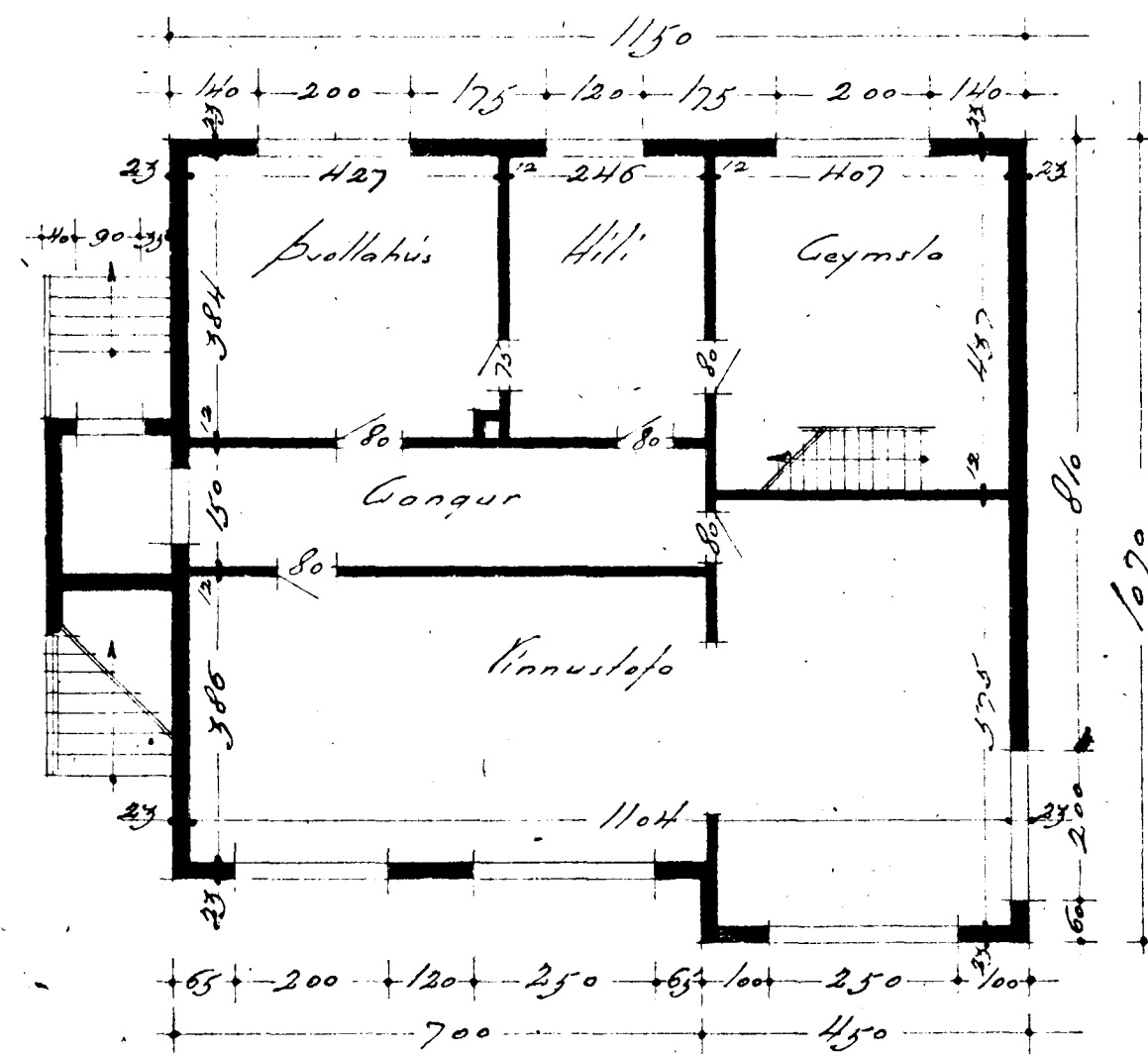
Skætur A-A



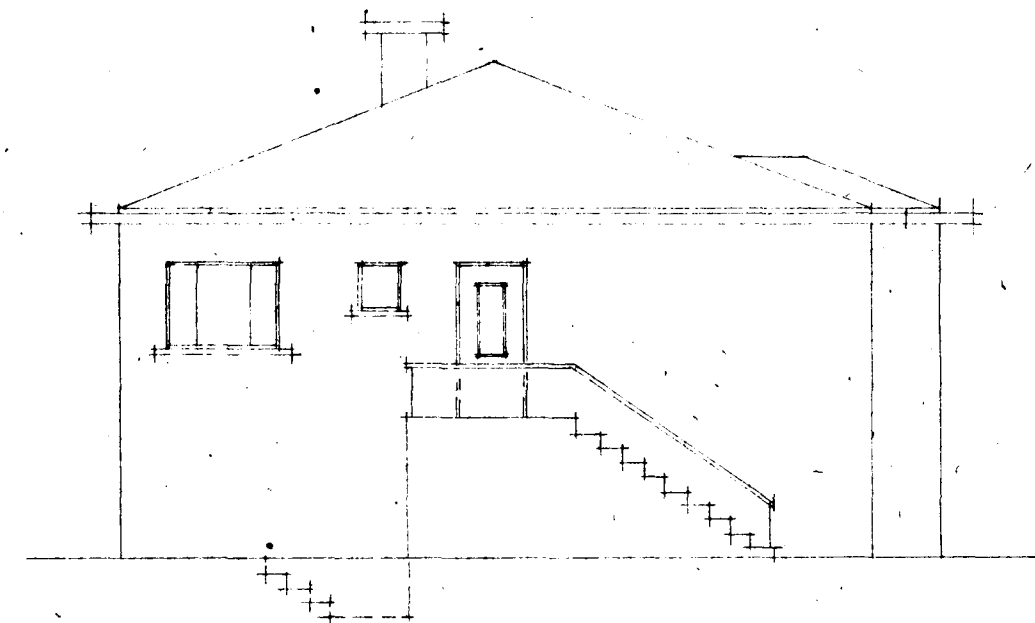
Austur



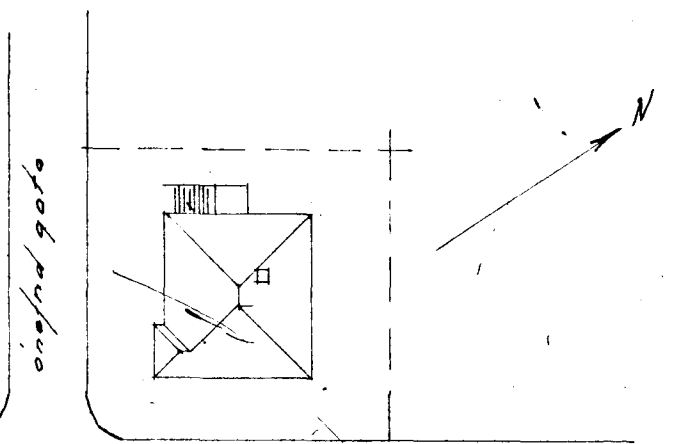
Hæðin



Kjallari



Vesta



Afsláðamynd (vísir) M 1:500  
 Kristján G. Einarsson

Hafnarfirði júní 1946  
 Sig. Kristjánsson