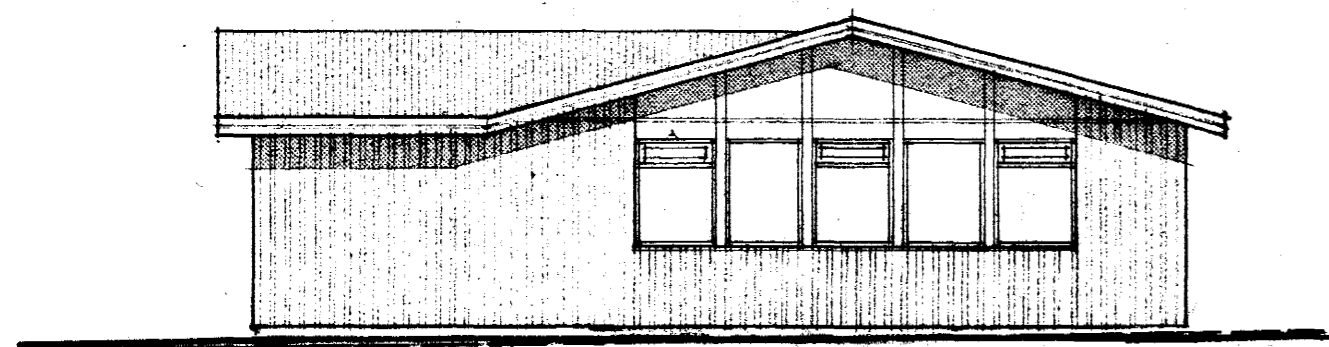


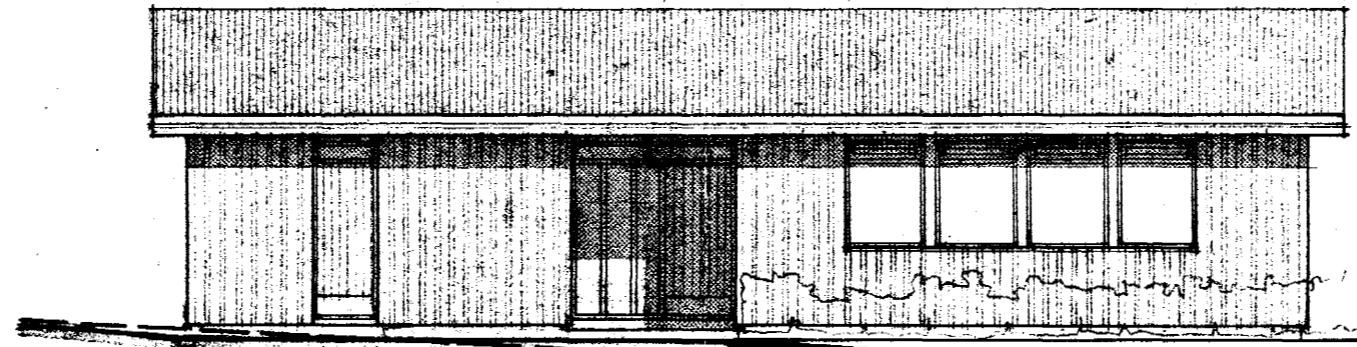
Samþykkt á fundi bygginga-
nefndar þ. 20/1 1982

BYGGINGAFULLTRÚINN
Í HAFNARFIRÐI

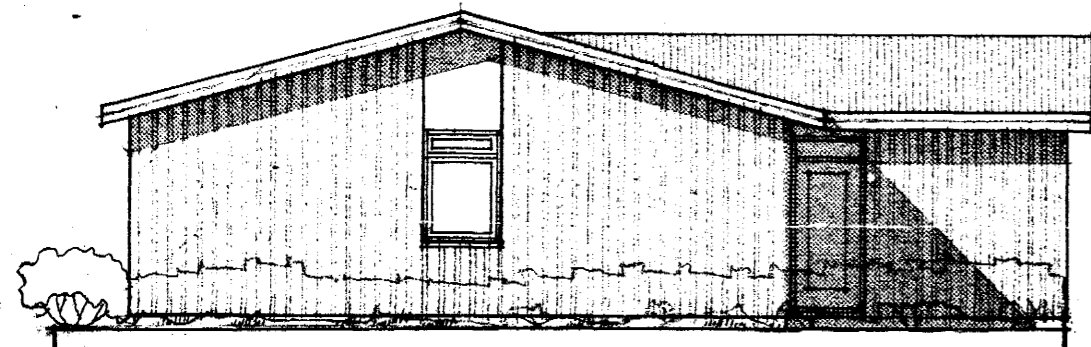
S. S. S.



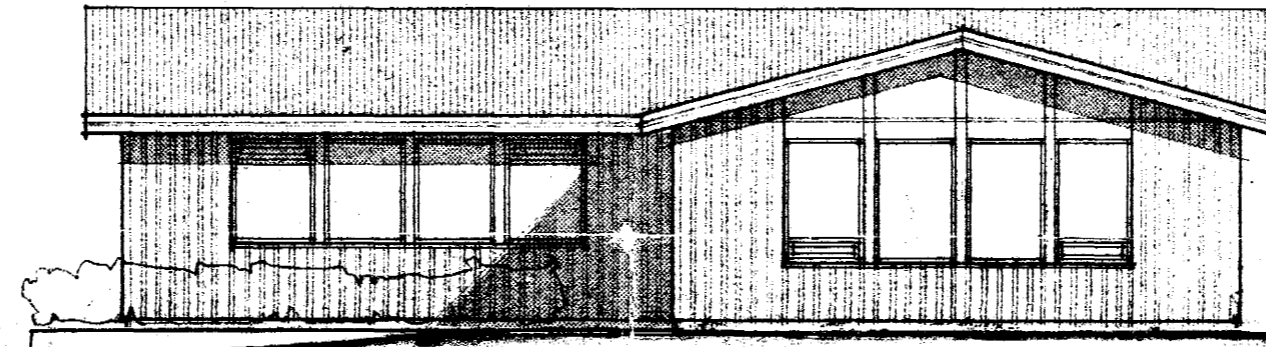
austurhlíð



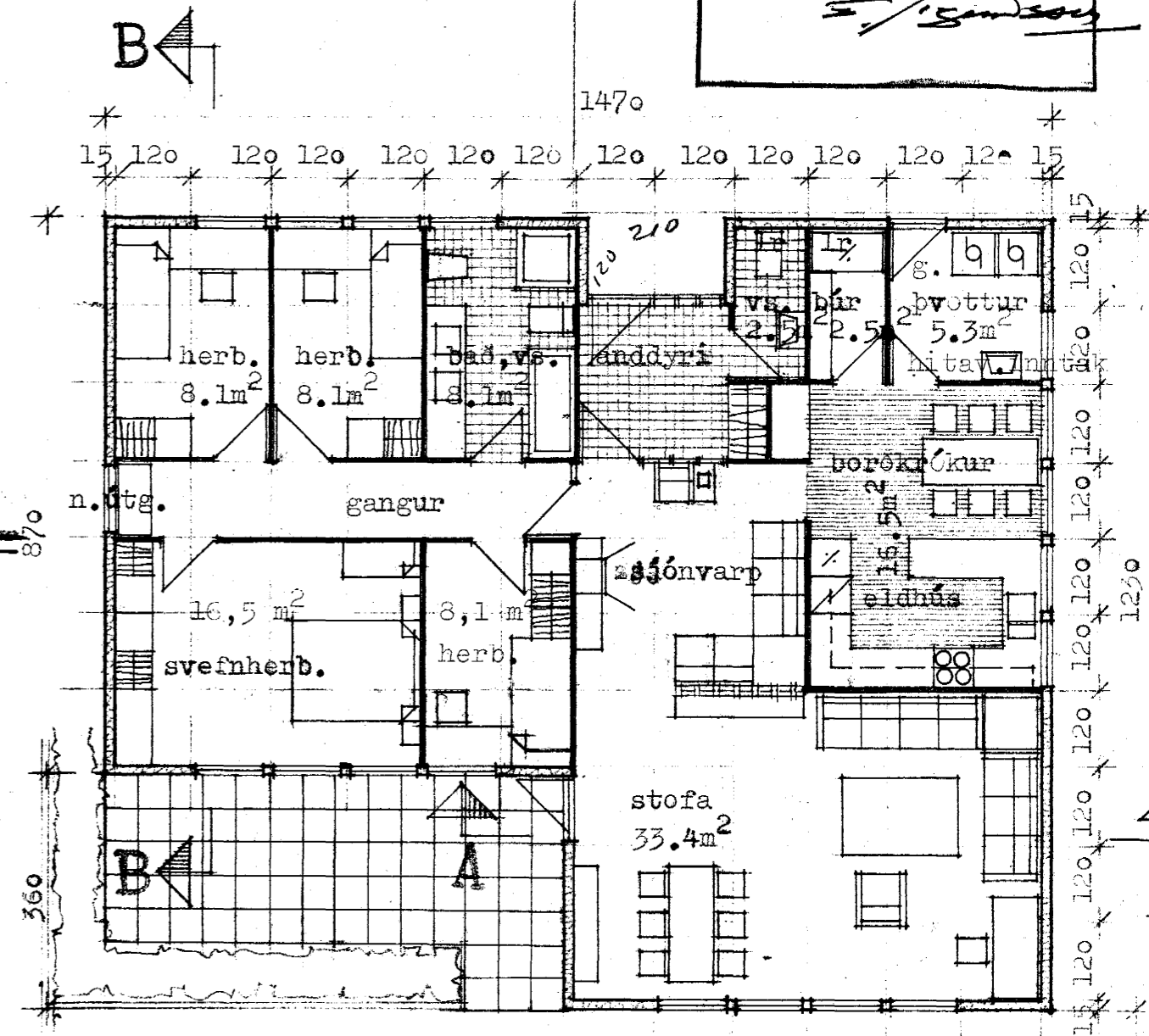
norðurhlíð



vesturhlíð



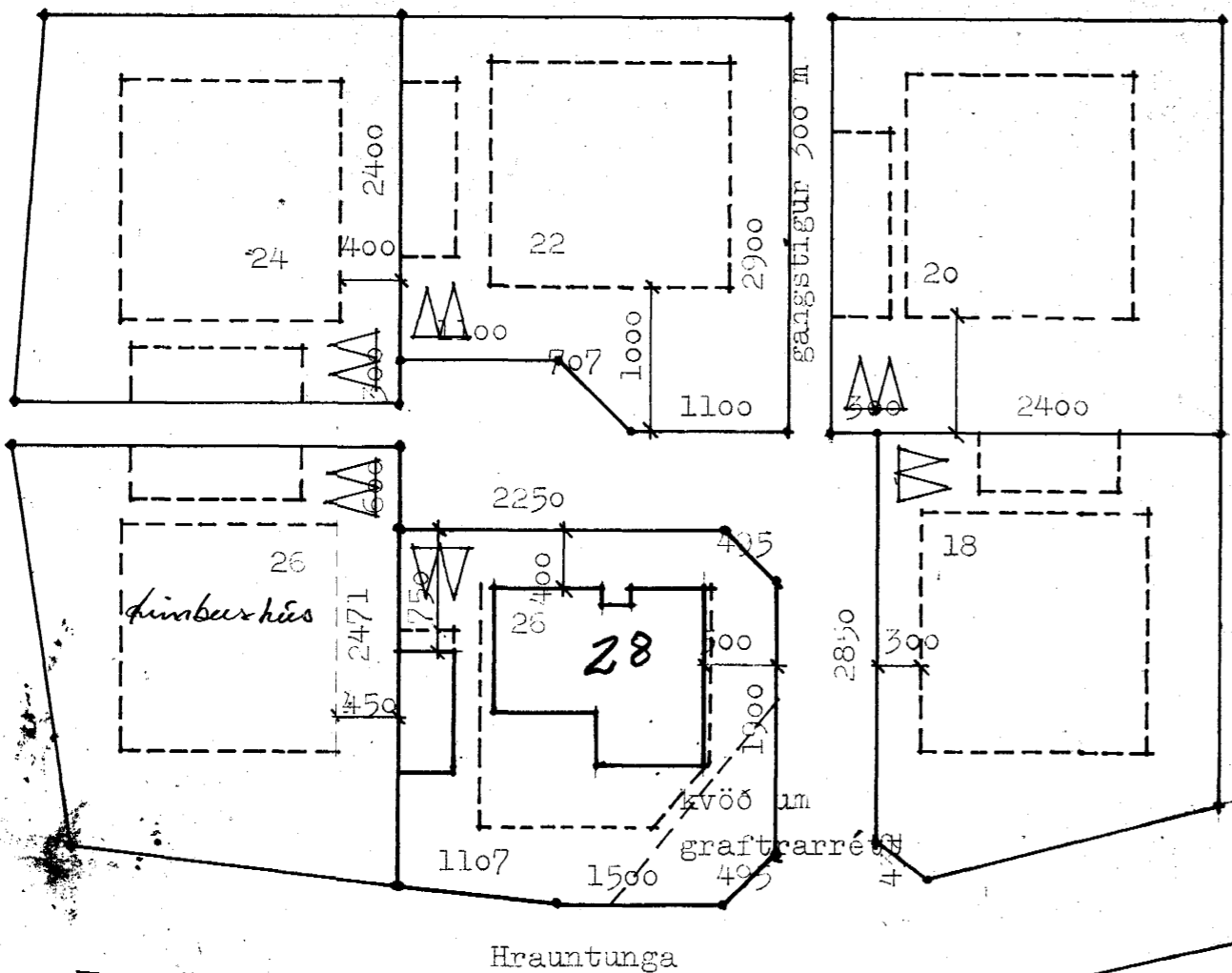
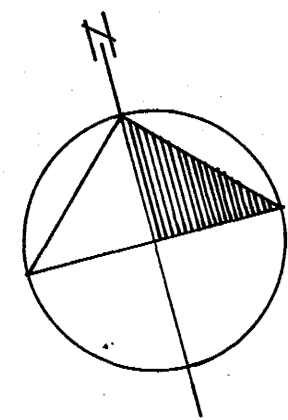
suðurhlíð



720

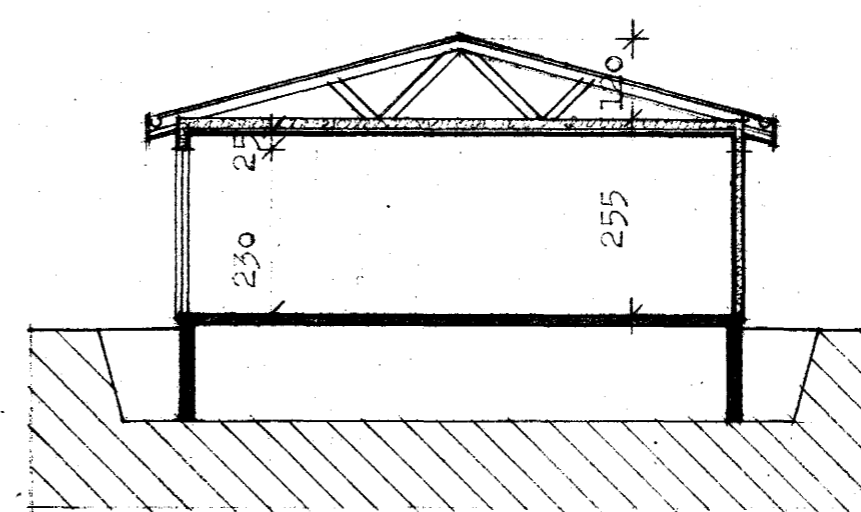
750

grunnmynd

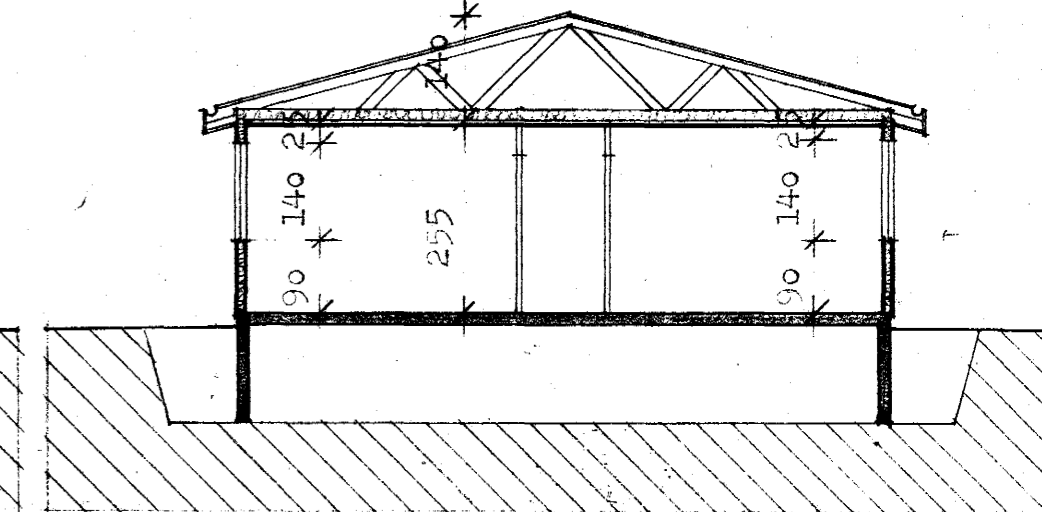


afstöðumynd

M=1:500



skurður AA



skurður BB

Kólnunartölur
Gólf K=0,36
Þak K=0,24
Vegið meðaltal
útvægja og glugga K=1,0

Flatarmál 152.4 m²
Rúmmál 515.3 m³
Afnot af teikningu þessari
Óheimil án leyris

Hús Aðalsteins Sakssonar
Hrauntungu 28, Hafnarfirði
grunnmynd, útlit, skurðir
afstöðumynd

N 1

KVARDI 1:10
DAGS. des '81
TEIKN. ásm
YFIRF. ker

Stíkan sf. Skippholti 1, s: 25240
Ásmundur Harðarson arkitekt
Karl-Erik Röcksen arkitekt

4310-0280 01

Karl-Erik Röcksen