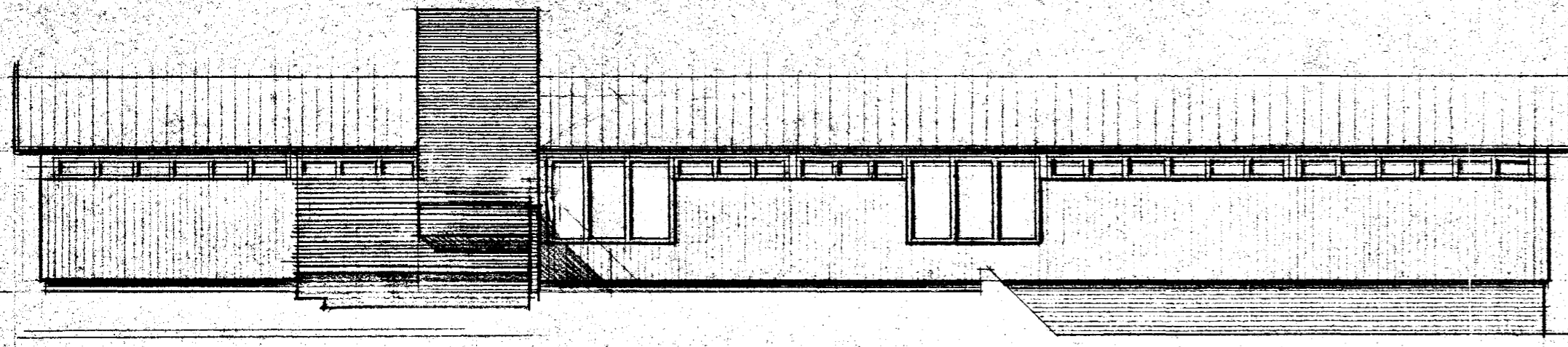


4250-0570.02

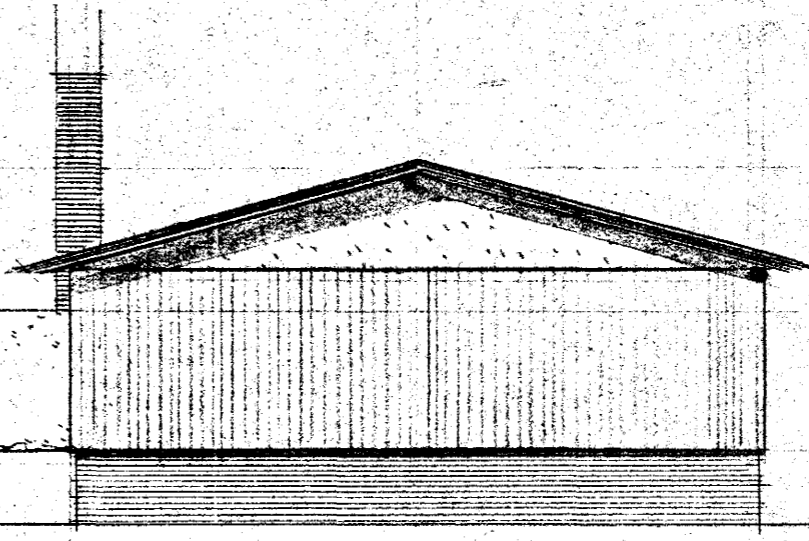
Samþykkt á fundi bygginga-
nefndar þ. 4/10/1967

BYGGINGAFULLTRÚINN
I HAFNARFIRÐI
F. Jónsson

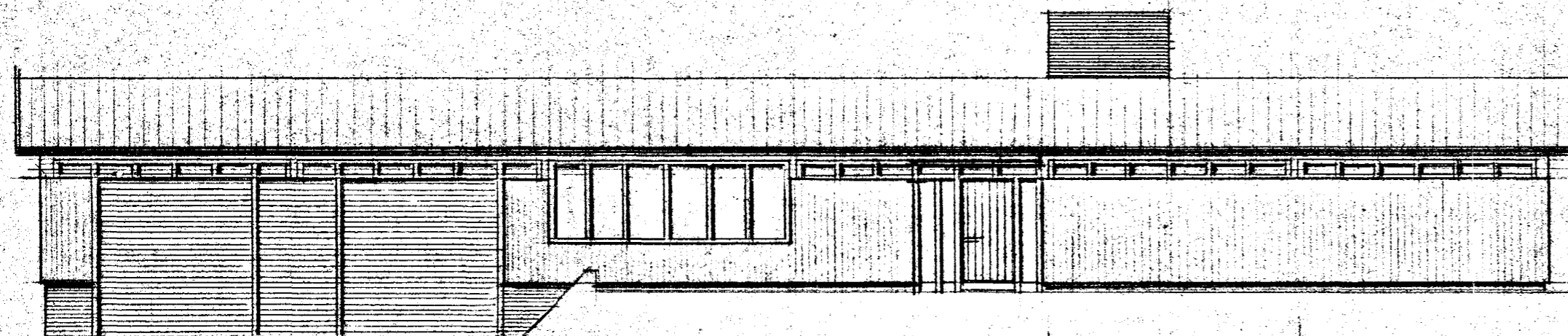
Samþykktin er hátt því stöðugt
at eldvannarvegur verði í milli
bilgæmsla og atakhus, til hennar
opnið til og gengit vardi þrá
opnum eldtekjum í samvæti
við slökkið í tættora.



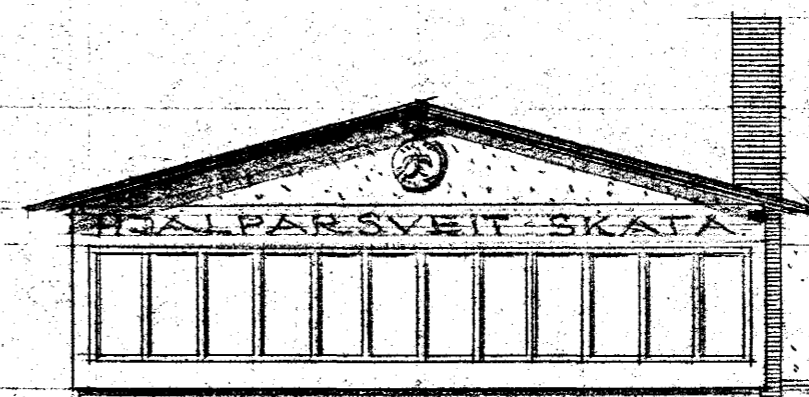
SÚÐURHLÍÐ



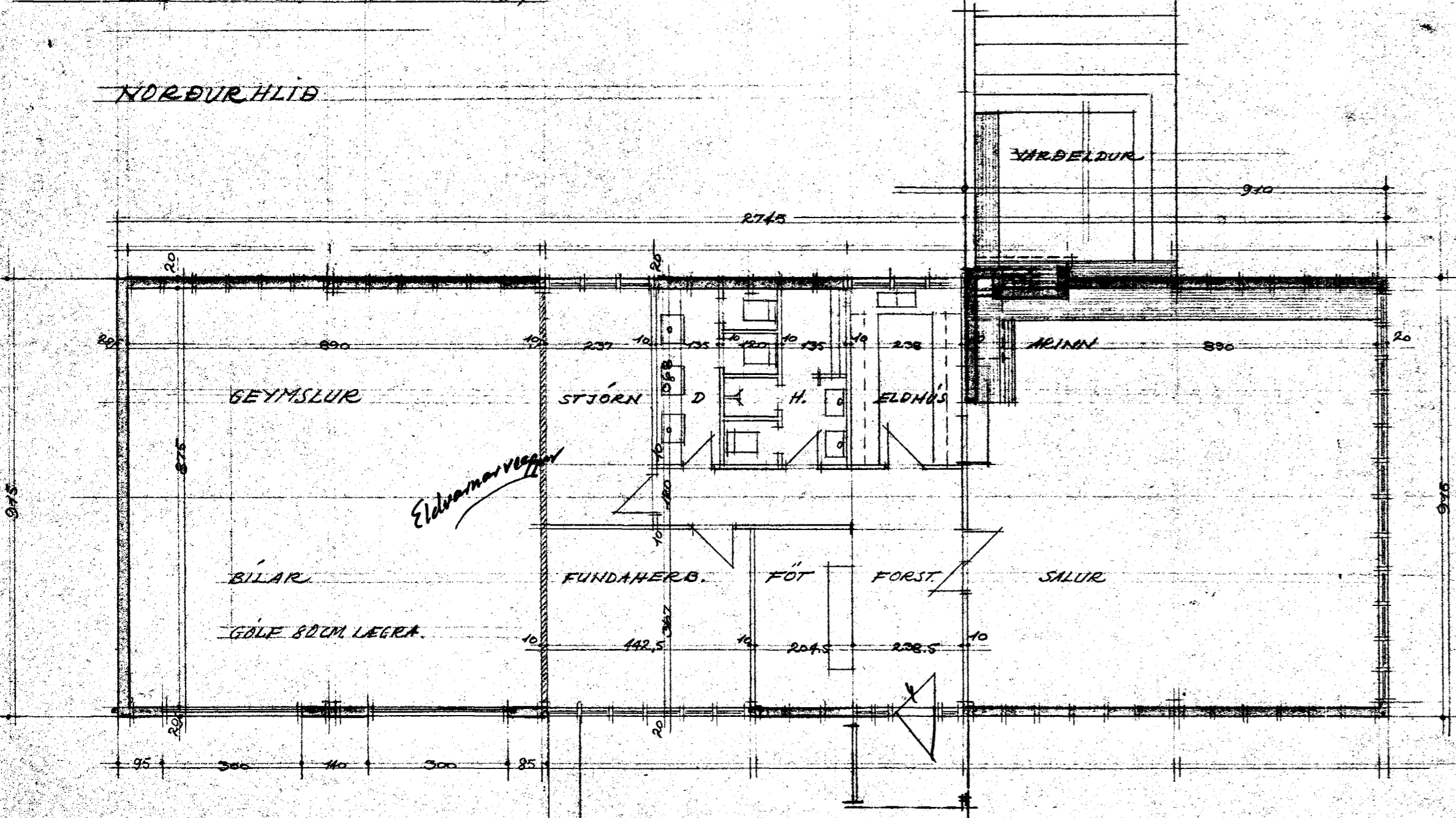
AUSTURGAFL



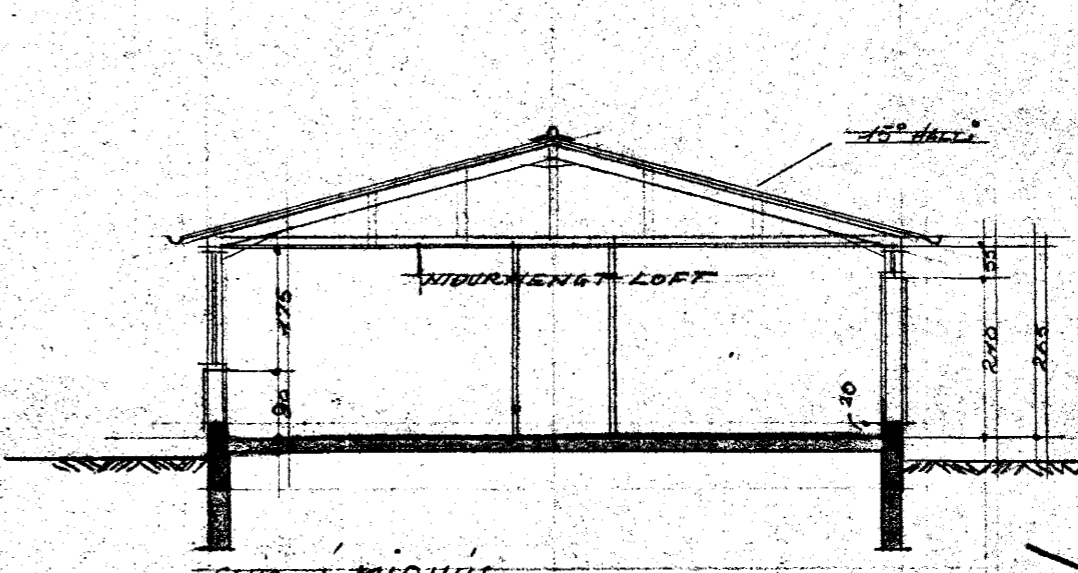
NORÐURHLÍÐ



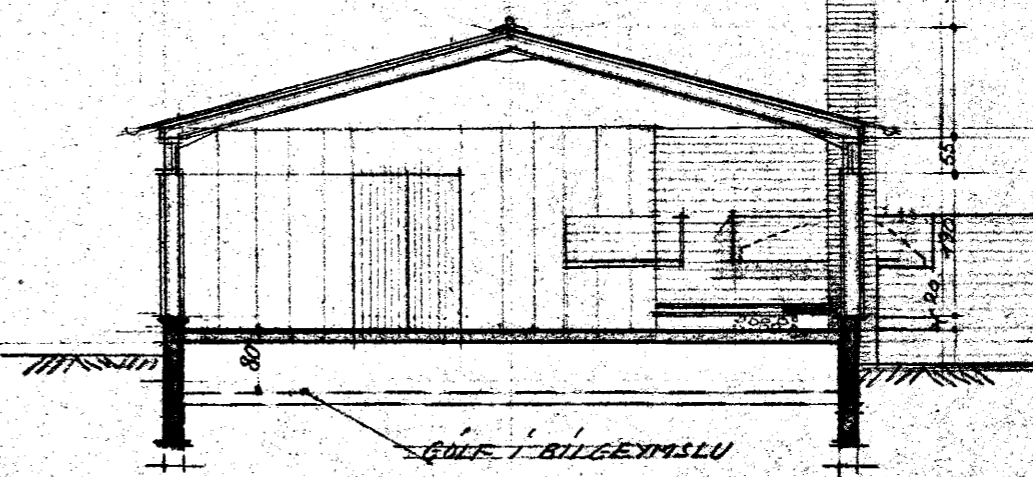
VESTURGAFL



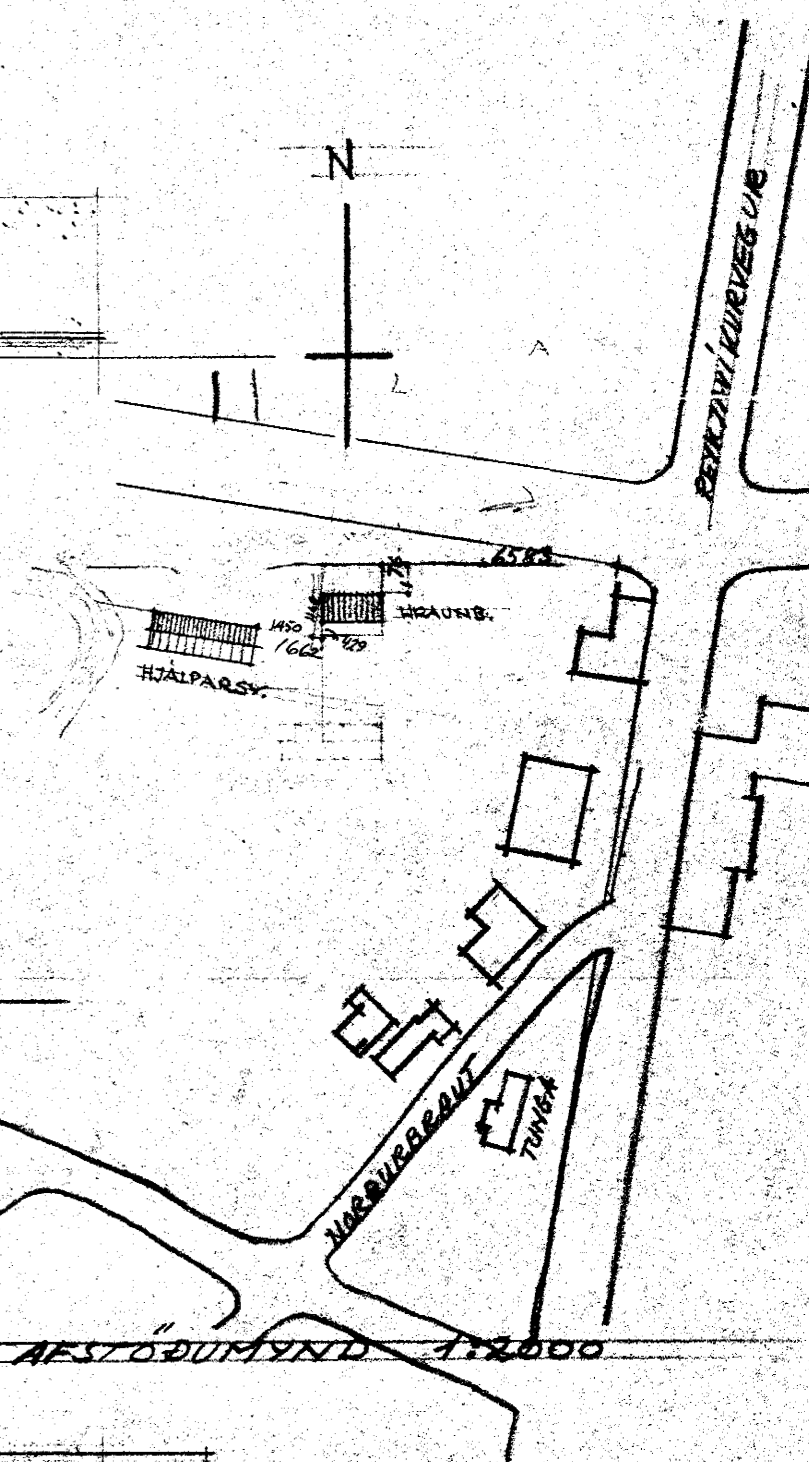
GRUNNFLÖTUR 251 M²



SNÍÐ Í MIÐHÚS



SNÍÐ Í SAL



ÞORVALDUR S. ÞORVALDSSON ARKITEKT AÐ
DUNHAGA 19 REYKJAVÍK 10678

PROJEKT: HJÁLPARSVÉI SKATA NO 30-20-1
M 1:100

Þorvaldur S. Þorvaldsson 17-4-67