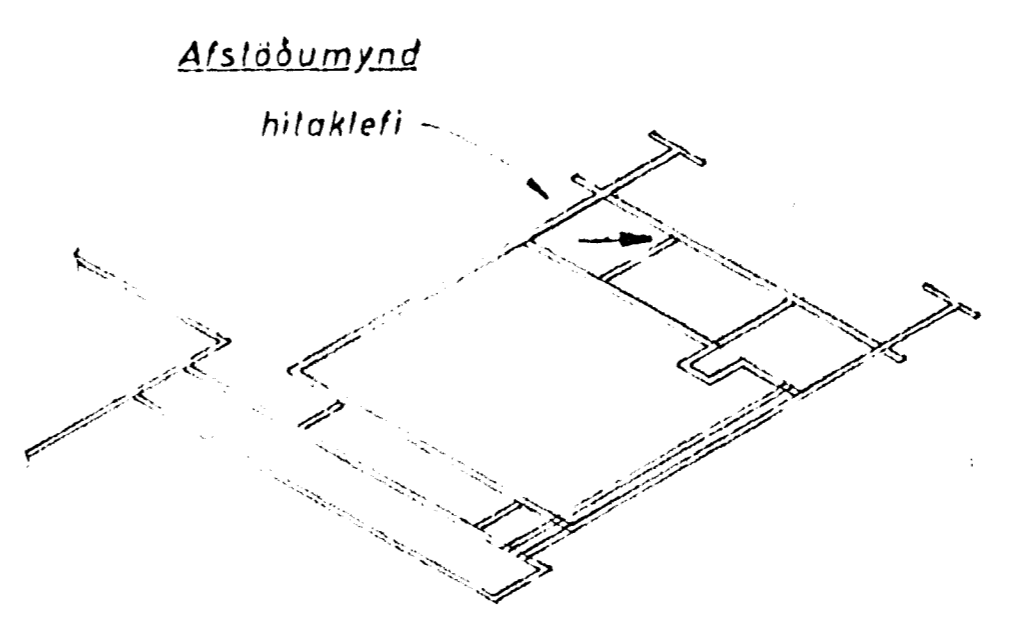


SKÝRINGAR:

- hitaveita lur
- - - hitaveila relúr
- |— renniloki
- |— einstreymsluki
- |— mótarluki HONEYWELL
- |— slautuluki DANFOSS AVD
- |— þrýstiminkari DANFOSS AVD
- |— hemill
- |— sáld
- |— mælir
- |— öryggisluki BELL & GOSSETT Nos 5
- |— aftæming m. slöngusúti
- |— hitamælir

- V₁ HONEYWELL mótarluki M945A + O455F + V5011A C_v: 1,0
- V₂ — " — " — " — " — " C_v: 0,6
- V₃ — " — " — " — " — " — " C_v: 1,0
- V₄ DANFOSS þrýstiminkari AVD 15
- V₅ DANFOSS slautuluki AVD 25
- V₁ - V₂ uniantengist



[Signature]
Kt. 110457-2789

VINNUTEIKNING
04 JUN 2003

Þj.	Heiti	Hl.nr.	Talnr.	Efni	Ath.
Dag.	Leiðrétting	Dag.		Leiðrétting	
Þrygging					
VERKFRÆÐISTOFA GUDMUNDAR & KRISTJÁNS Laufasvogil 19					Mæsk. 1:20 Verkt. Tala. Yfir. Samþ.
VÍÐISTADASKÖLI, HAFNARFIRDI RUMMYND HITAKLEFA HITALÖGN					Dsgbók nr. TEIKNING NR. 3A-90 Verkt. nr. 003 of