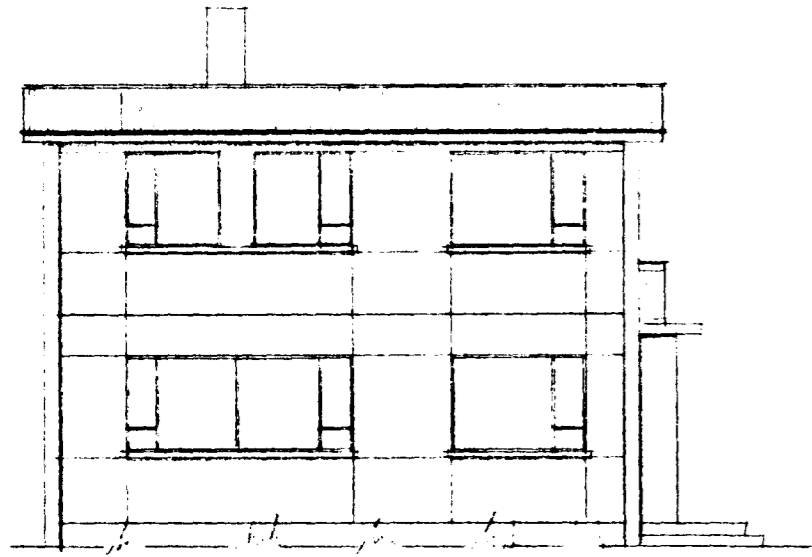
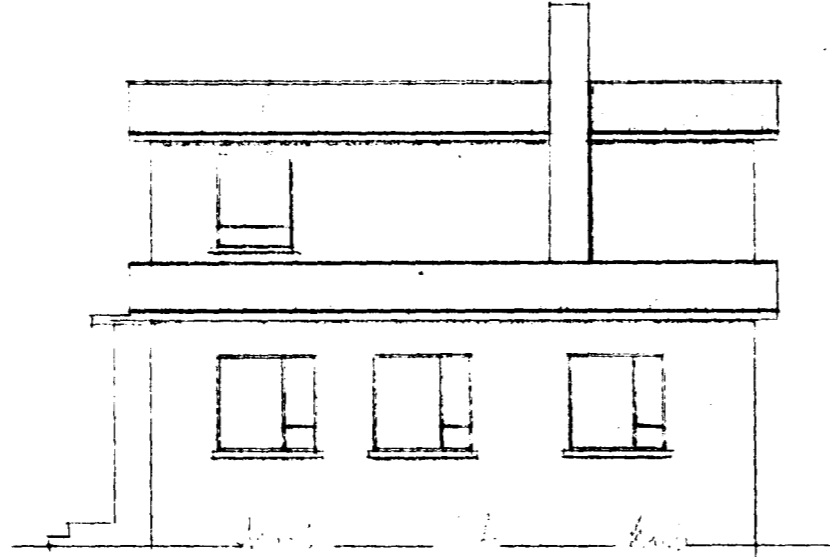


Flúðarkúis Braga V. Björnsson

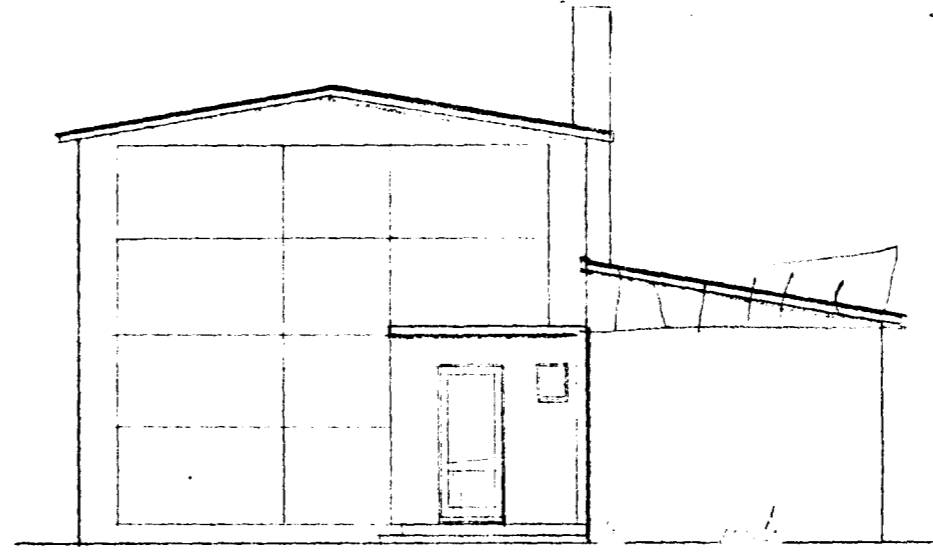
Hringbraut 30. Hafnarf.



SUDUR

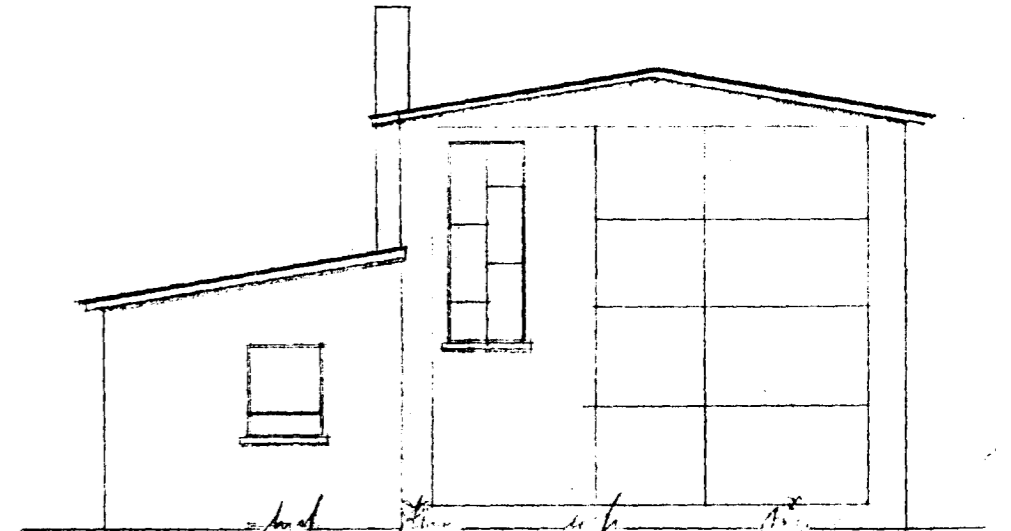


NORDUR

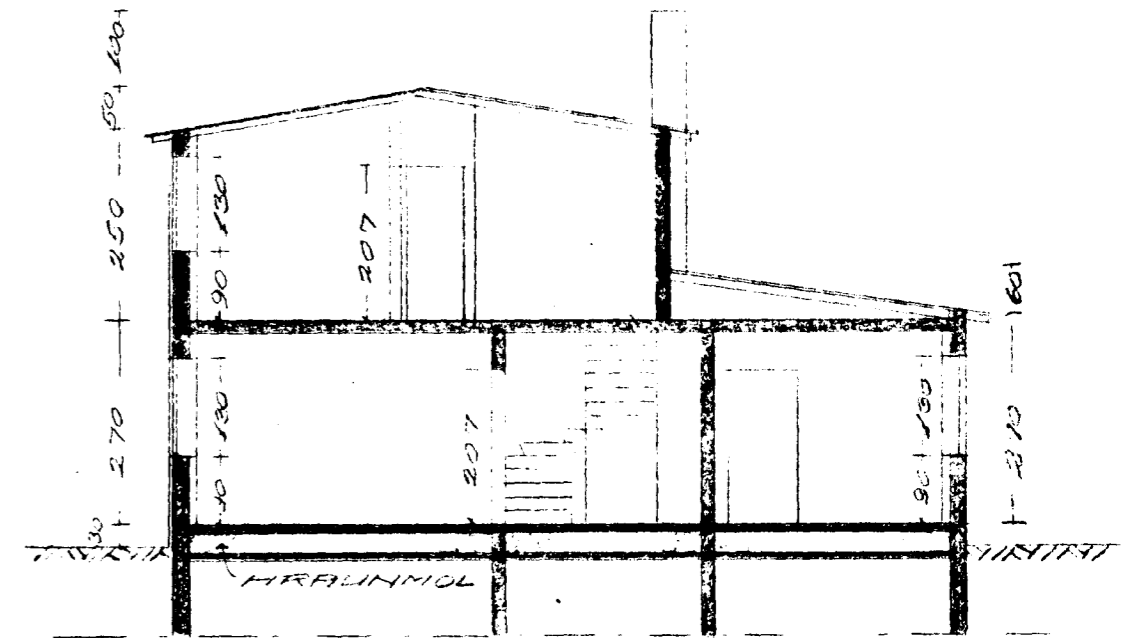


AUSTUR

Glúðarkúis.
 Arnður Þorsteinsson
 Lina og Þórunn

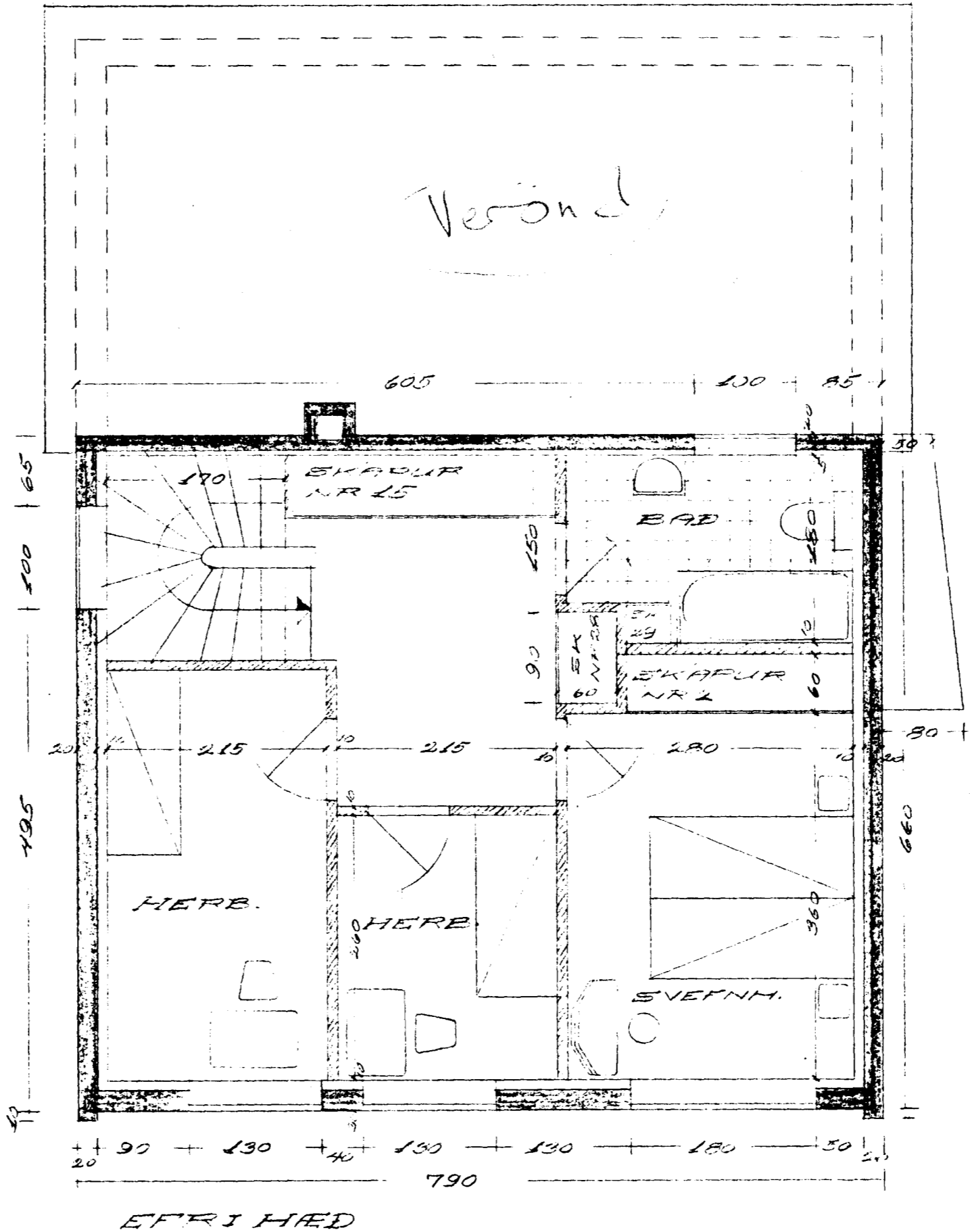
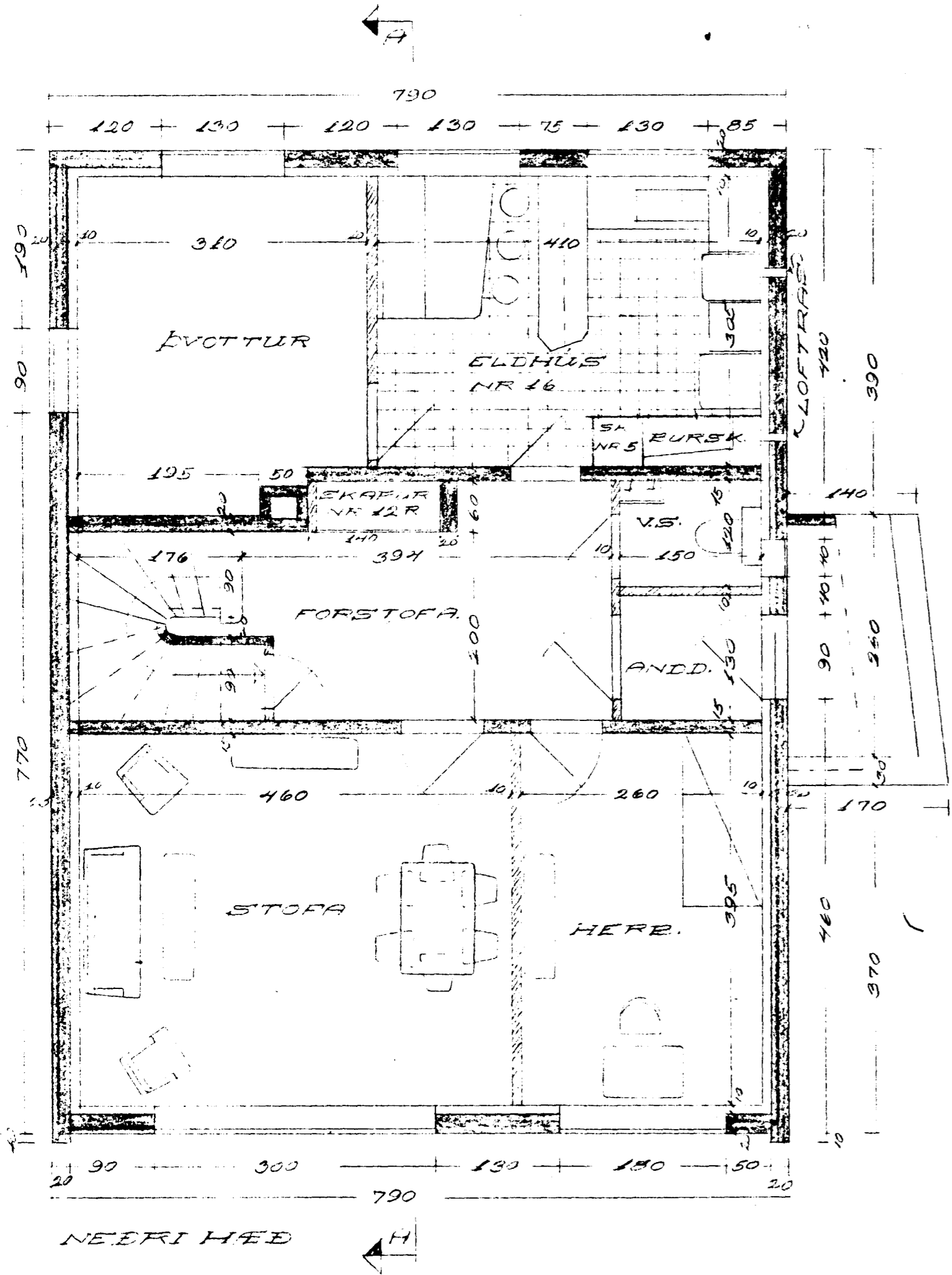


VESTUR



SNID A-A

FLATARMÁL NEDRI HEDAR = 88 m²
 FLATARMÁL EÐRI HEDAR = 72 m²
 FLATARMÁL HEILT = 160 m²



HUSNÆÐJENMALASTOPNUN RÍKISINS		
EINEYLISHUS VERK		
VERK.	GRUNNMYNDIR NR 22	
SVIÐ	MÁL 1:50	
	ÚTLIT OG	
	SNID	
	MÁL 1:100	BLAÐ
DAGS	JÚNÍ 1959	NR 1
ARK.	Arnður Þorsteinsson	
TEIKN	Þorsteinn Þorsteinsson	