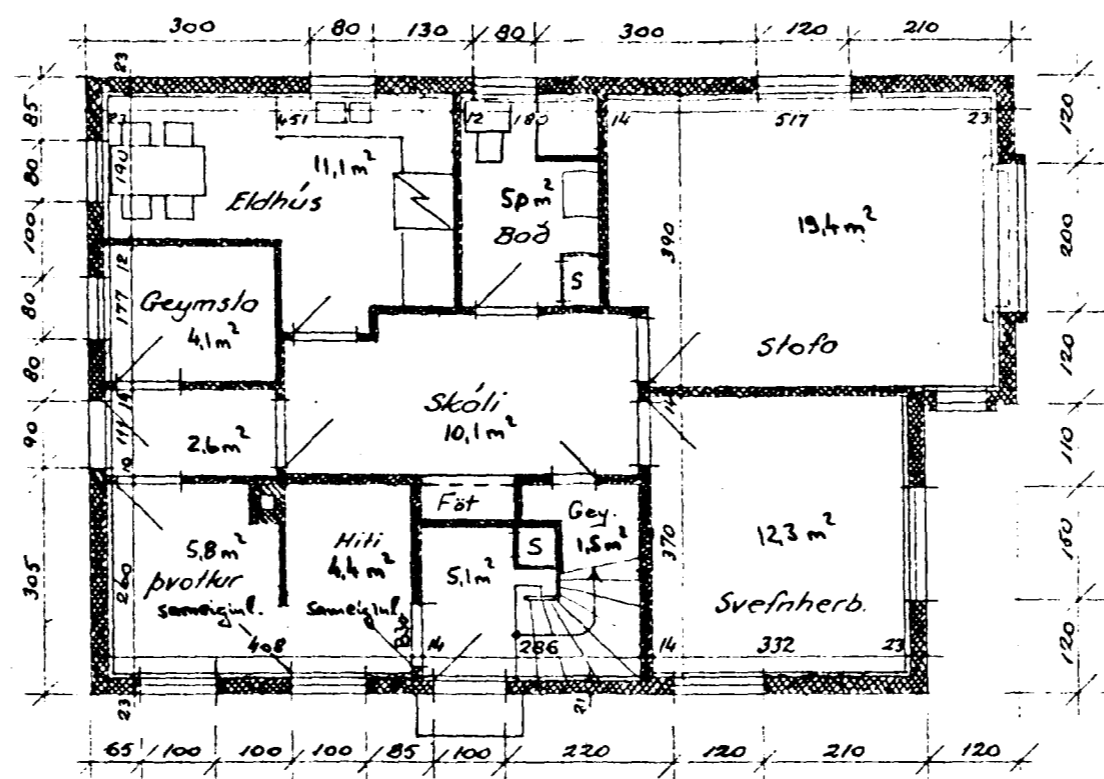
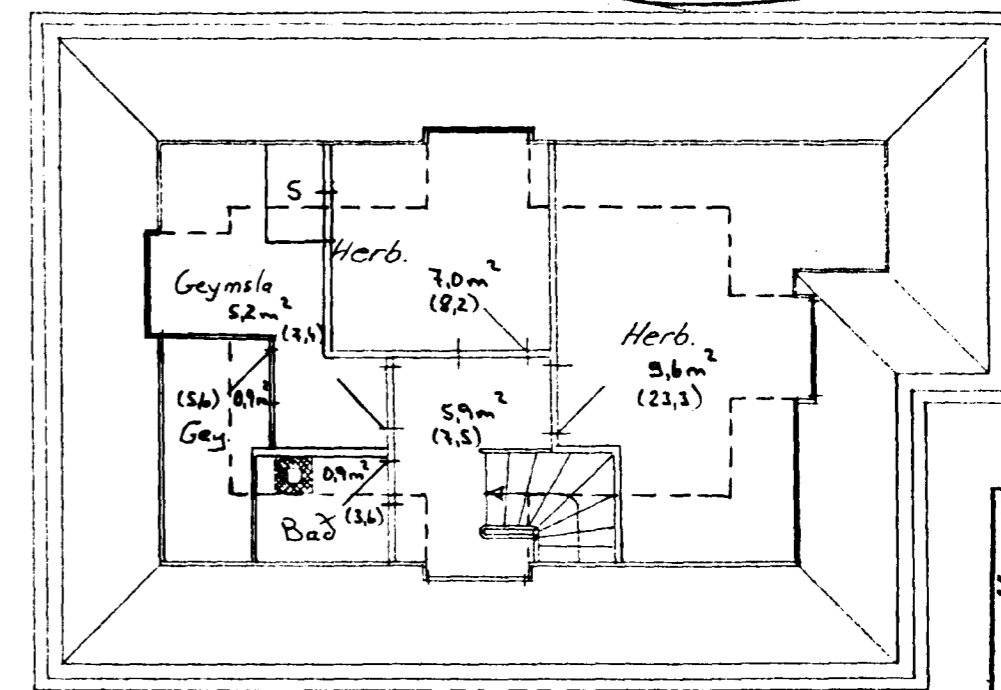


2. hæð
257,8 m²
95,5 m²



1. hæð
157,8 m²
95,5 m²

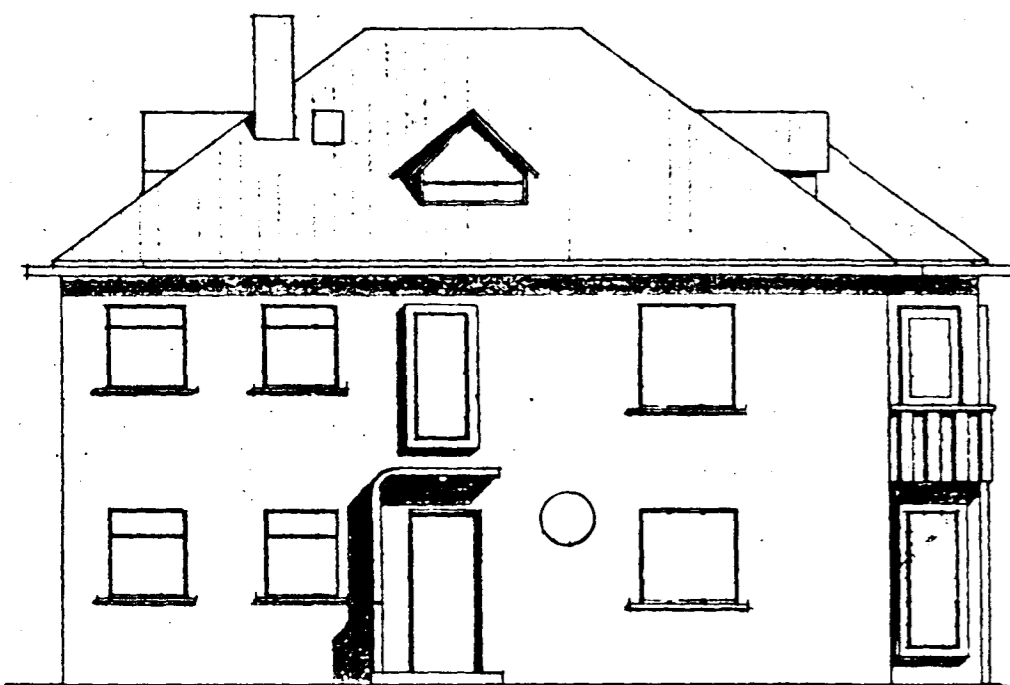


Rishæð
127,0 m²
31,1 m²
(55,7)

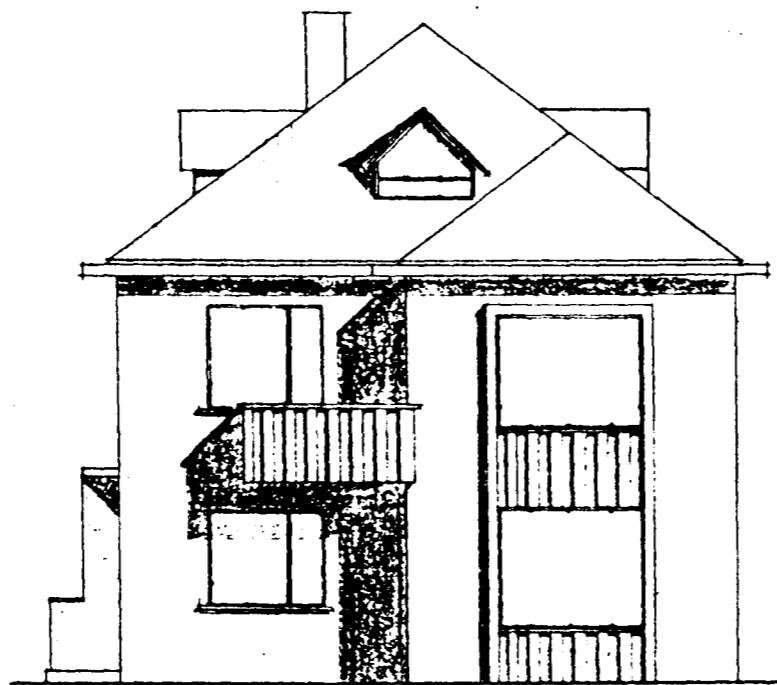
BO. í RÍ.S.

Samþykkt að heimila breitinguna á fundi þarnt
29 JAN. 1995
Ártaðir uppdrættir með samþykki byggingarnefndar verða afhentir að verki loknu.

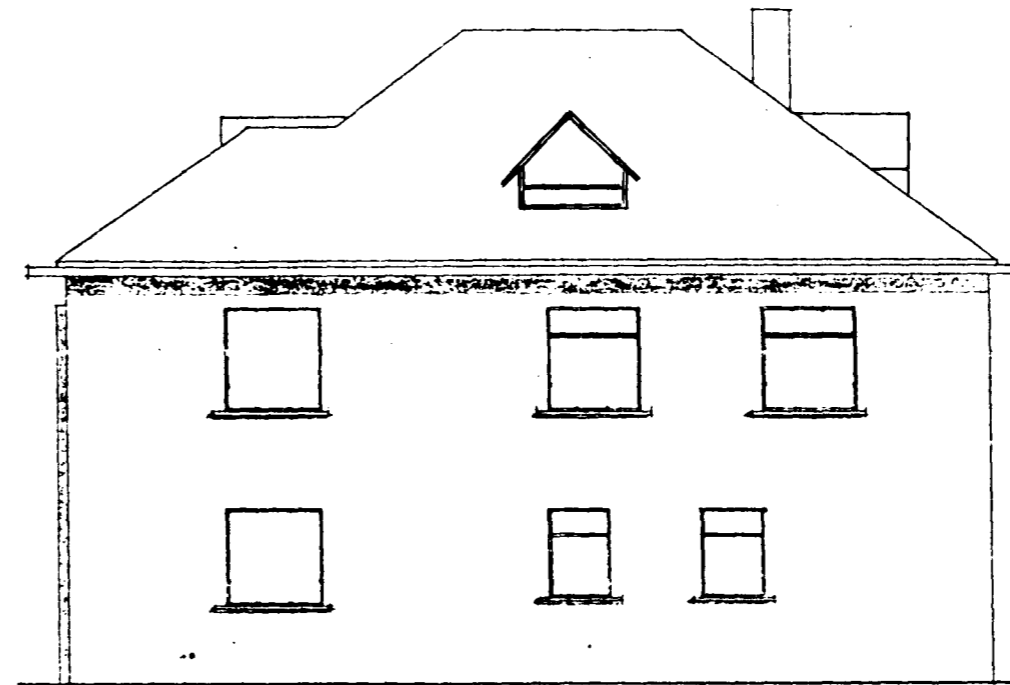
Ástíla, Þórgunarsaga



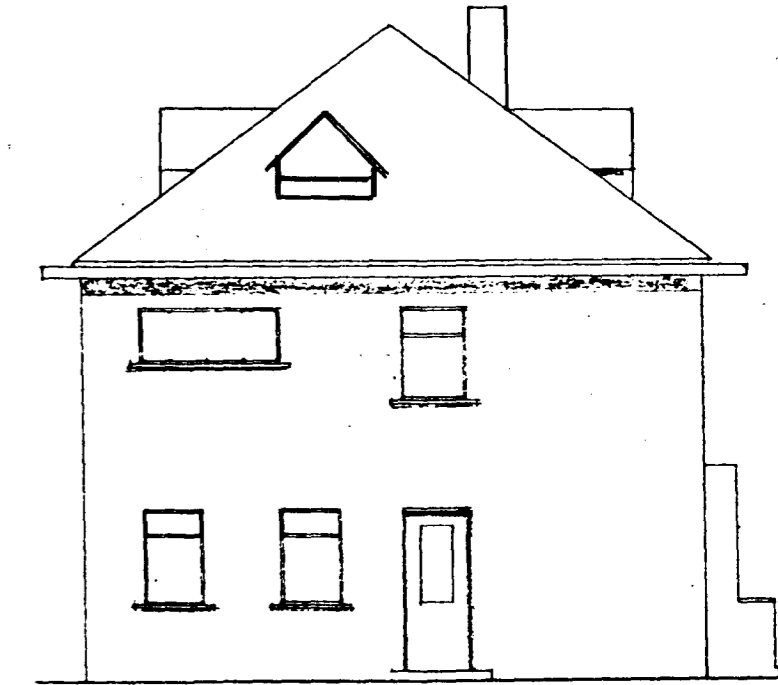
Norðvestur



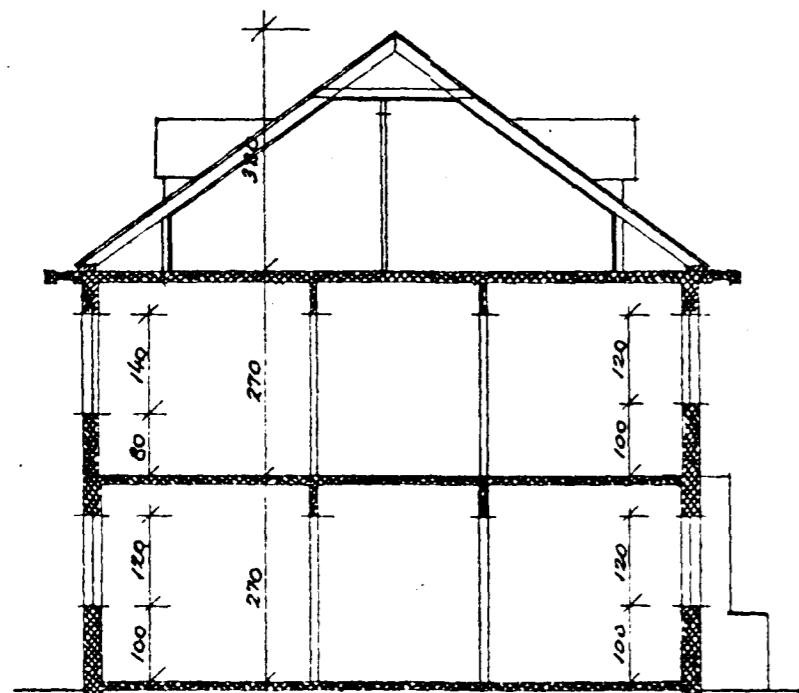
Suðvestur



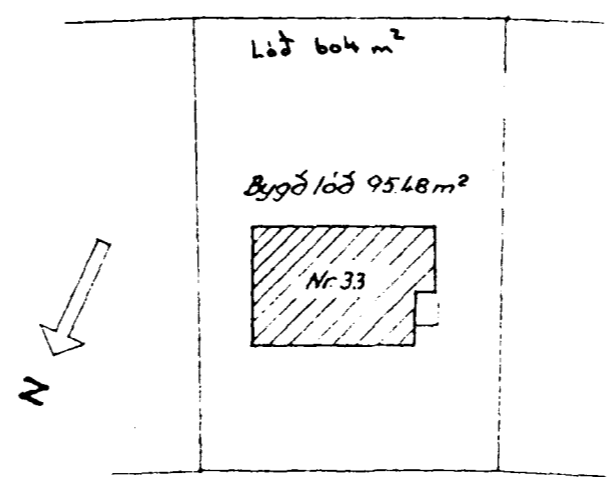
Suðoustur



Norðoustur



Sneidning a-a



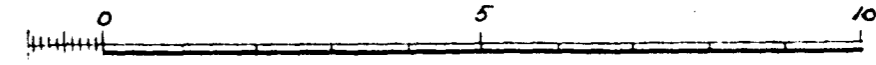
Hringbraut

Afslöðumynd M:1:500

Íbúð niðri	76,7 m ²	207 m ²
Íbúð uppi	132,4 m ² (161,0)	401 m ²
Sameign	13,0 m ²	35 m ²
ALLS	222,1 m ² (250,7)	643 m ²

BYGGINGAFÉLAGIÐ FÖR H.F.
Ófiskli Spítjón B.S. Sørensen
Samþ. 16. sepl. 1949

HÚS NR 33 VÍÐ HRINGBRAUT Í HAFNARFIRÐI



RAUNTEIKNING,
1 OKT. 1995

Reykjavík, ágúst 1949
Hörin Þjórnsson