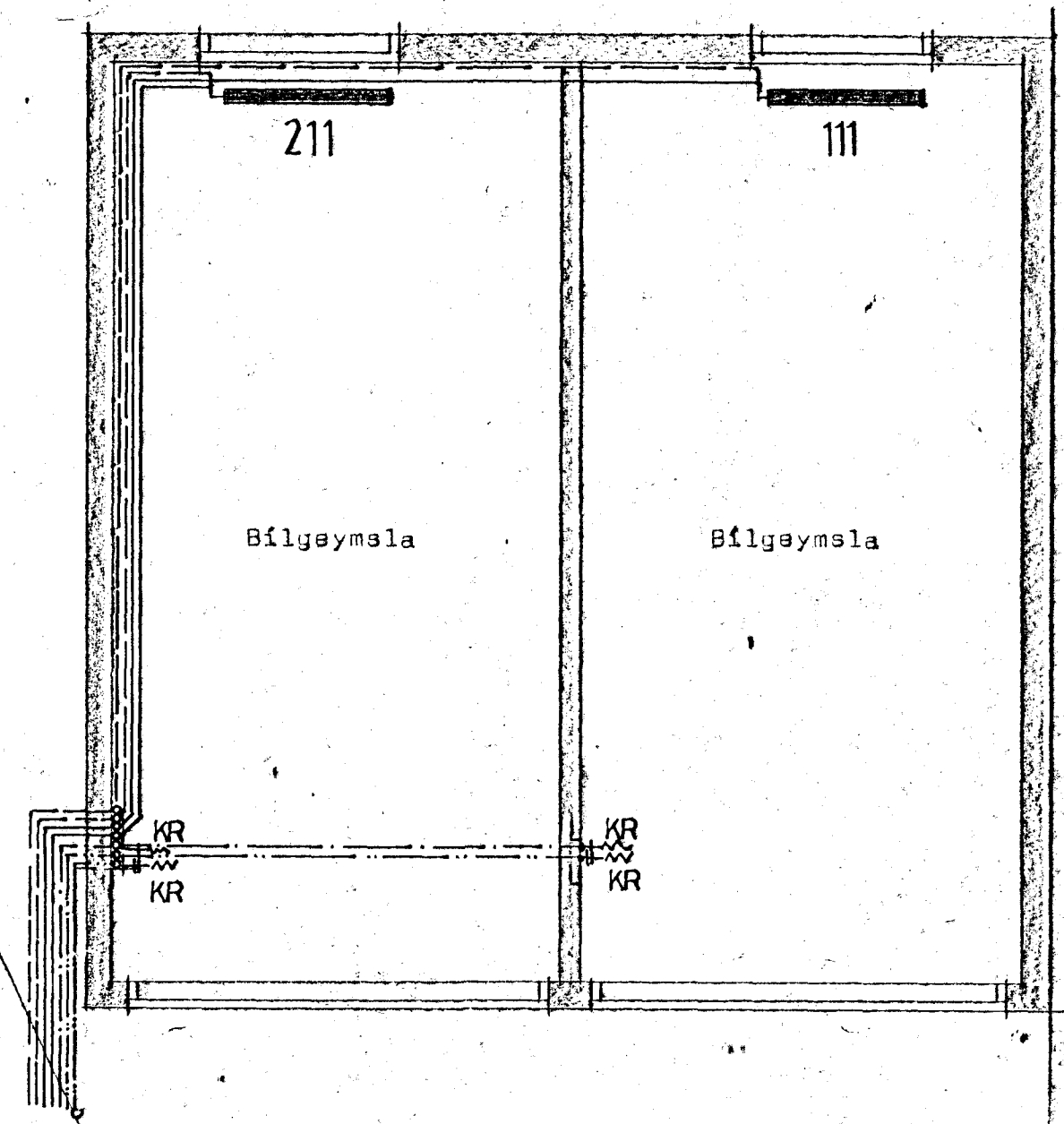
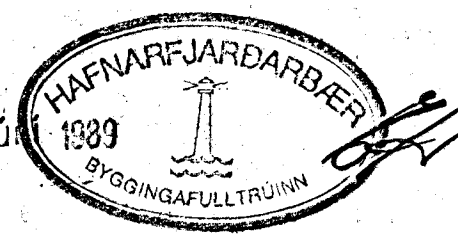



Grunnmynd neðri hæðar



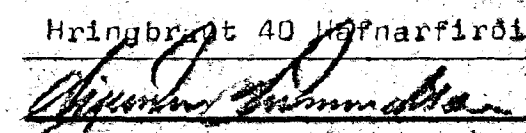
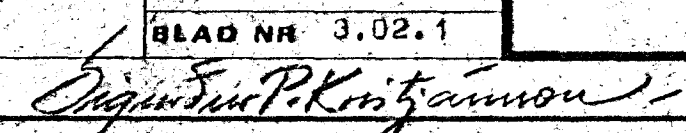
: Kalt neyztuvatn lagt í 25 PEH-pípa.  
 : Aðrar leiðslur eru stálpípur einangraðar með polyurethane og hlífðarkápu úr peh,heildregin.





# STADALHÚS

TEIKNISTOFA SÍÐUMÚLA 31 SÍMI 83141

<b>VERKEFNI</b> Hita og neyztuvatnseldgn	<b>DAGS.</b> Maí 1989.	<b>VERK NR</b>
	<b>MKV.</b> 1150	87-30
Hringbraut 40 Hafnarfirði	<b>BR.</b>	
	<b>BLAD NR</b> 3.02.1	
 		
<b>SIGURÐUR GUOMUNDSSON</b>		<b>SIGURÐUR P. KRISTJÁNSSON</b> EFTI