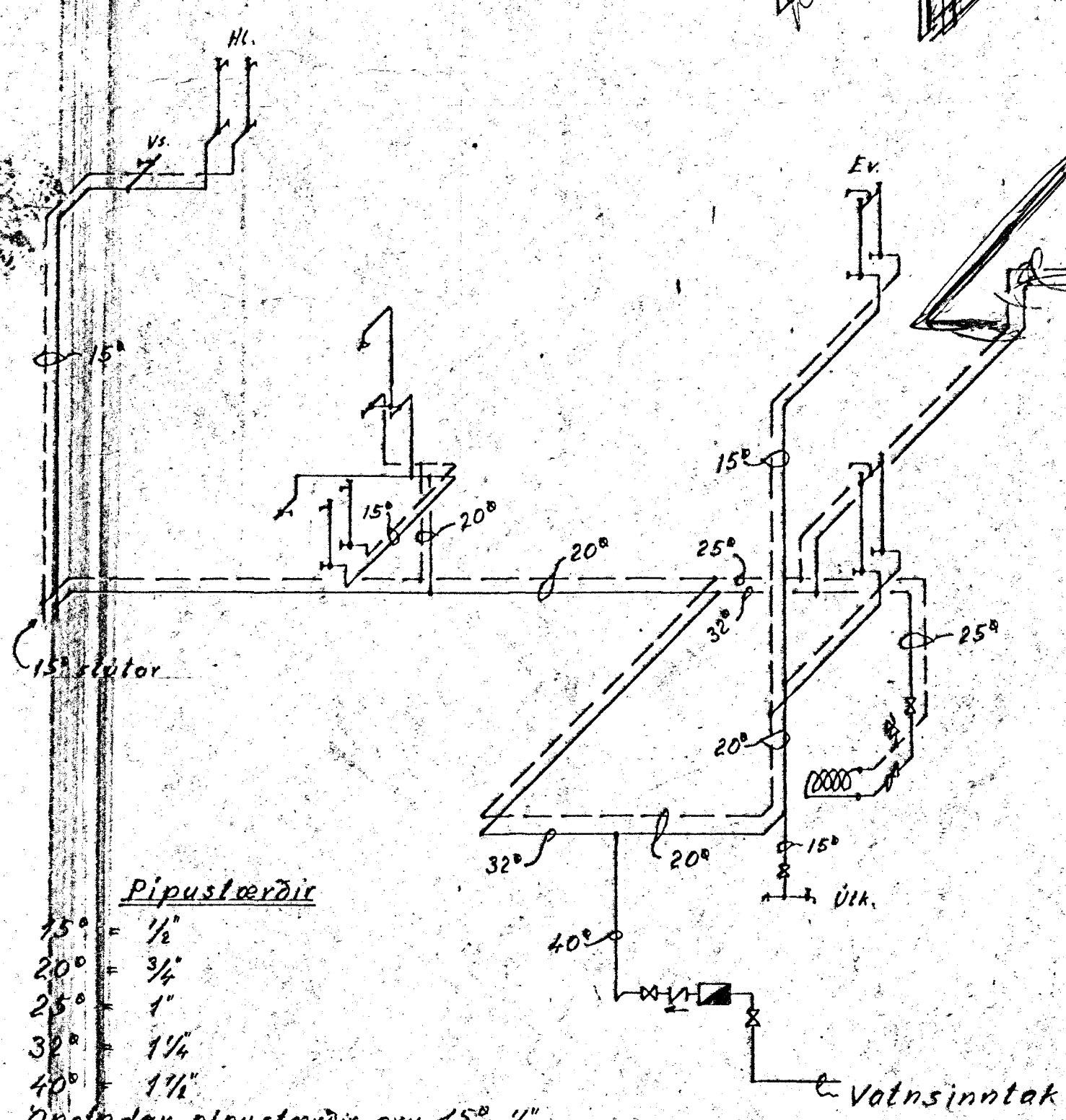
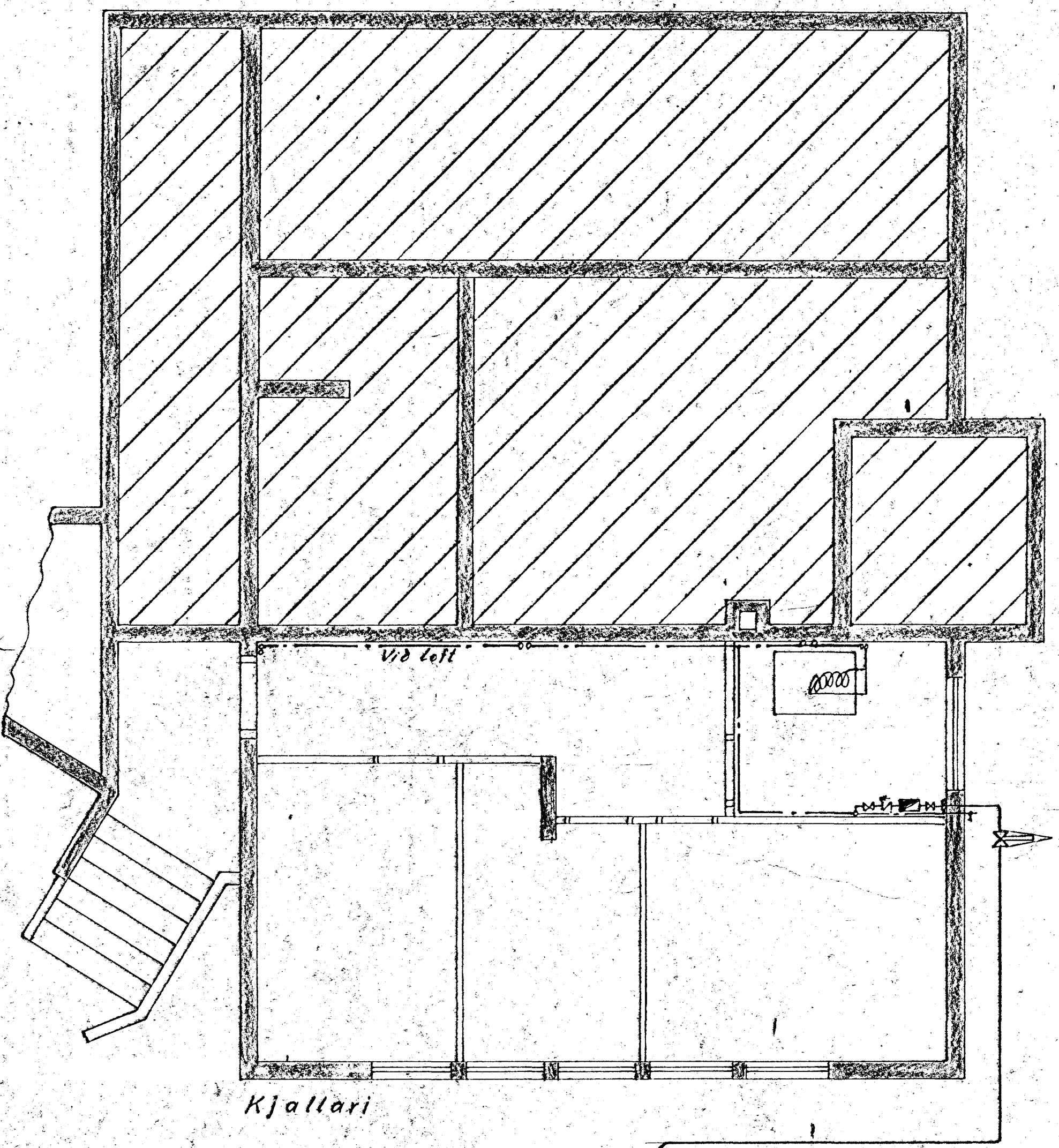
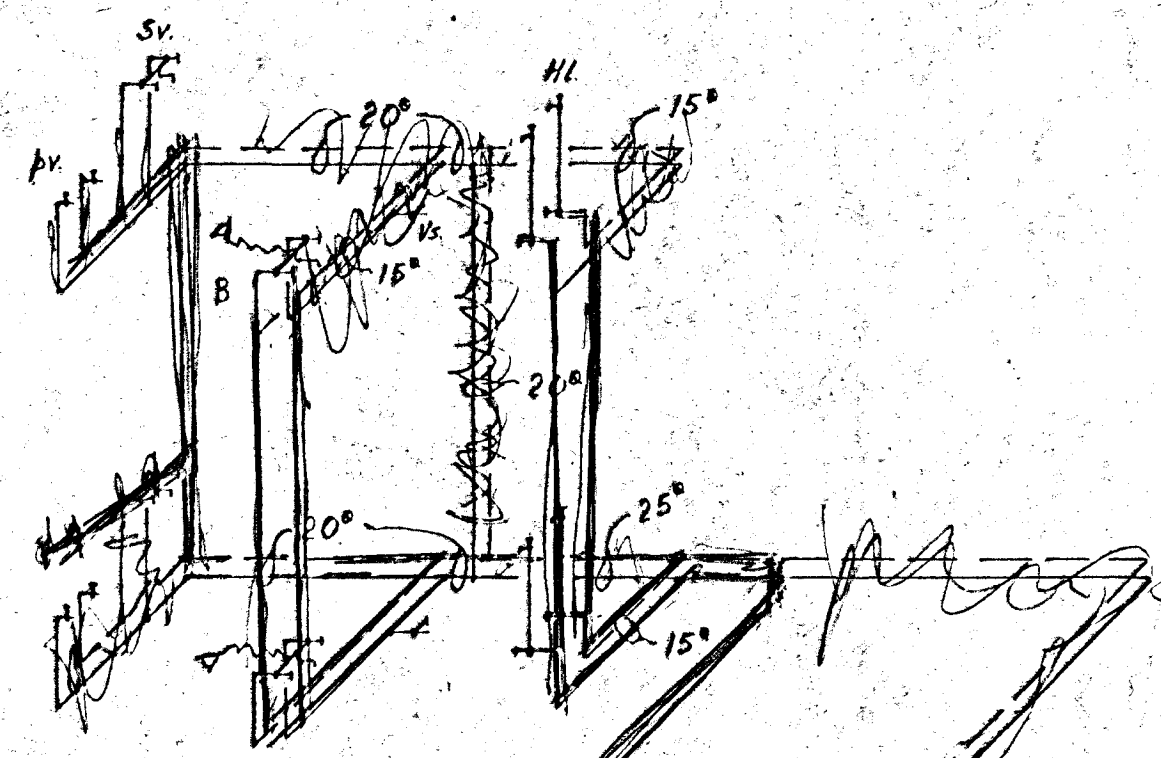


Hringbraut



Pípustærðir

15°	1/2"
20°	3/4"
25°	1"
30°	1 1/4"
40°	1 1/2"

Ónefndar pípustærðir eru 15°-1/2"

Efni og frágangur lagna séi samræmi við vatnsveitureglugerð Hafnarfjarðar

----- Heitar lagnir  
 \_\_\_\_\_ Kaldar "

Heitar löppunareiningar 13  
 Kolda " 16  
Samt. 29

Hringbraut 42 Hafnarfirði		Gunnar Erlendsson Tæknifræðingur Sími 4-21-75	
Vatnslögn		Mælikv. 1:50 1:500	Teikn. Okt. 1971