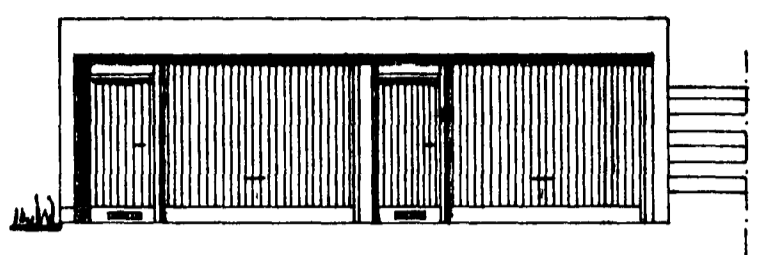


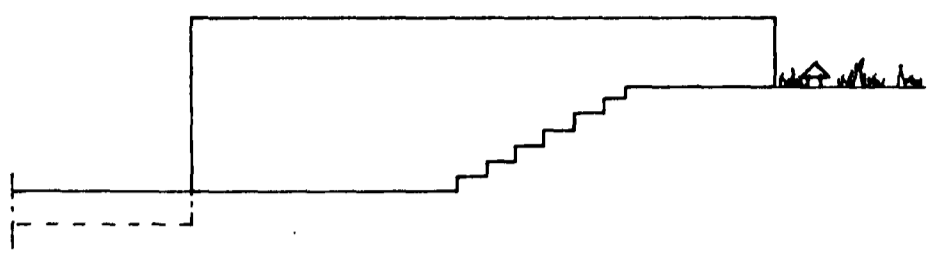
Samþykkt á fundi bygginga-  
nefndar þ. 29.6. 1989.

BYGGINGAFULLTRÚINN  
Í HAFNARFIRÐI

*Eir L. Haldrup*



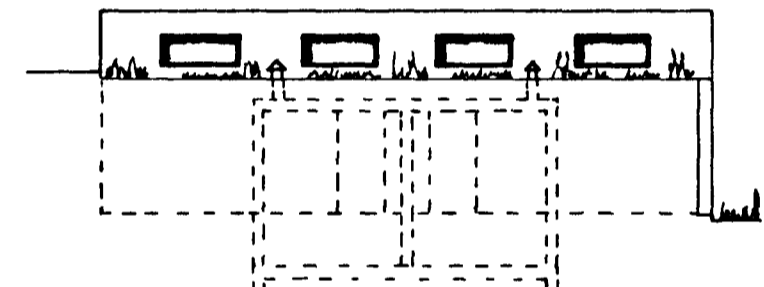
VESTUR



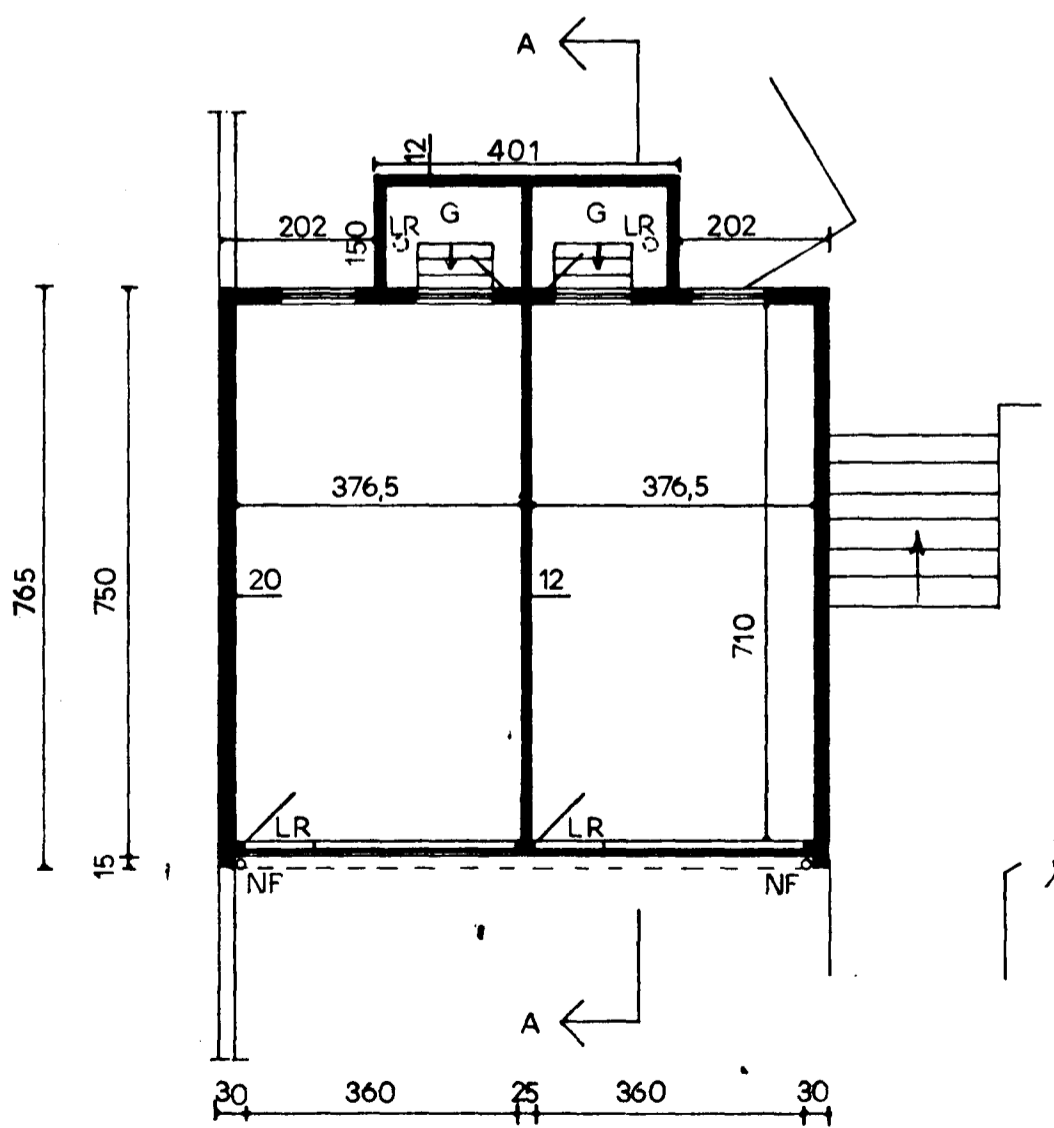
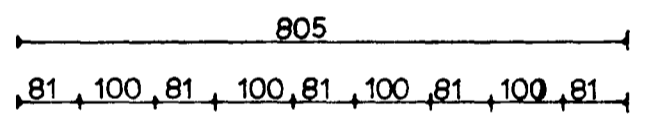
SUDUR



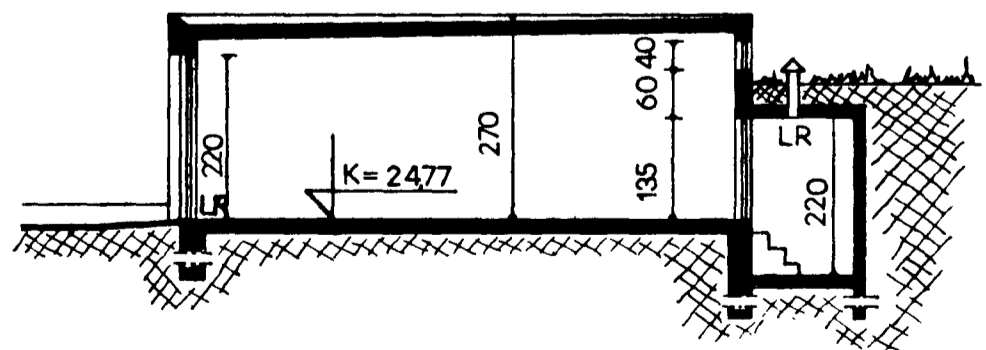
NORDUR



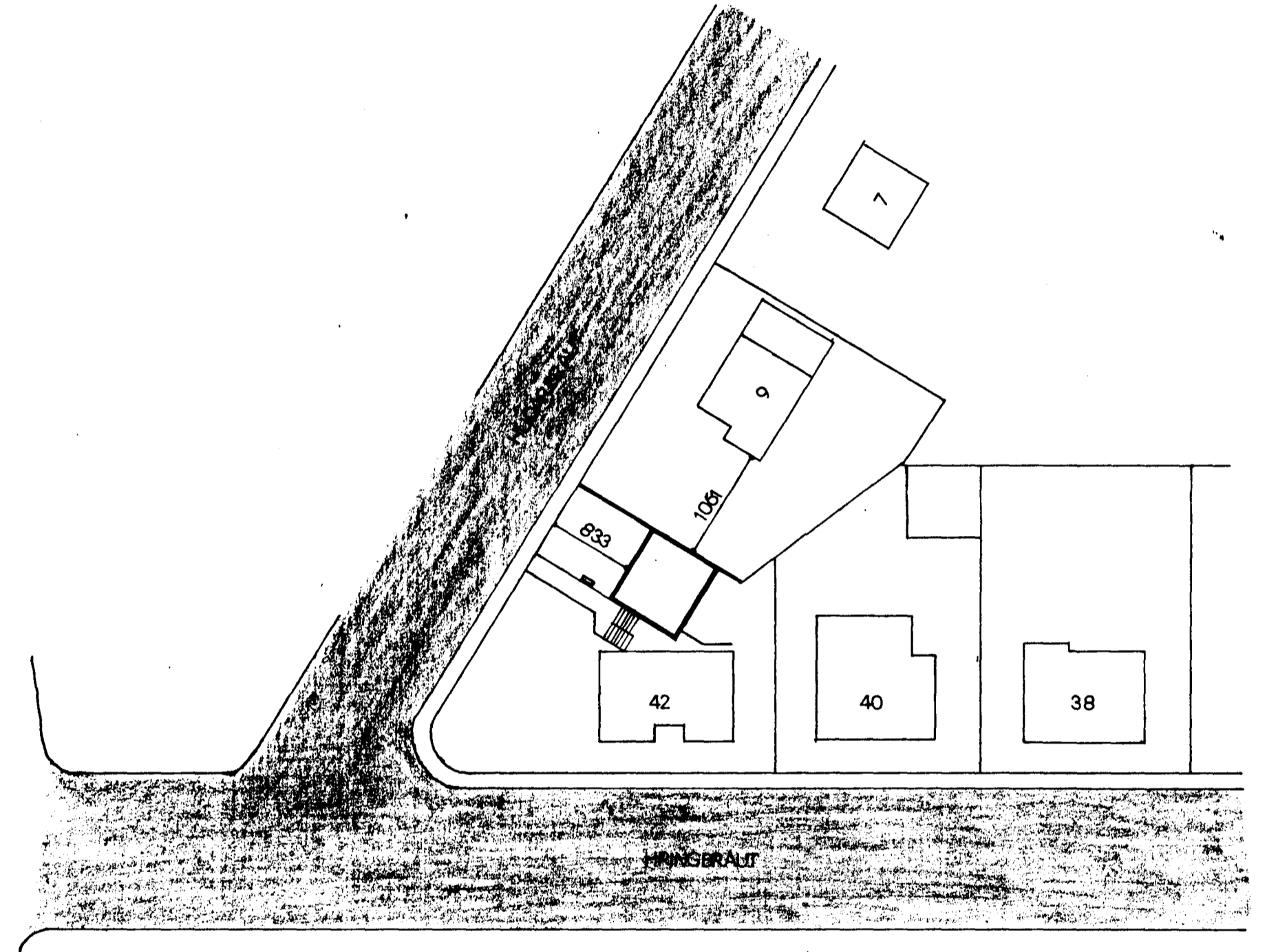
AUSTUR



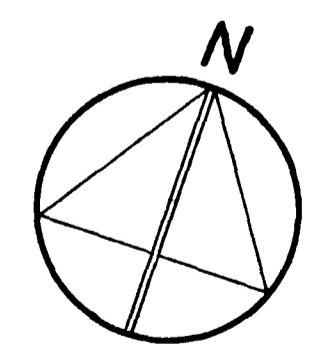
GRUNNMYND



SNID A-A



AFSTÖÐUMYND 1:500



STÆRD		
BILGEYMSLA	60,4 m <sup>2</sup>	163 m <sup>3</sup>
GEYMSLA	6,0 m <sup>2</sup>	13 m <sup>3</sup>
SAMTALS	66,4 m <sup>2</sup>	176 m <sup>3</sup>

BILGEYMSLA	
<b>HRINGBRAUT NR. 42</b>	
ÚTLIT	1:100
GRUNNMYND	1:100
SNID	1:100
AFSTÖÐUMYND	1:500

Hafnarfirði 3. júní 1989  
*Eir L. Haldrup* *Arnar Friðhólmsson*