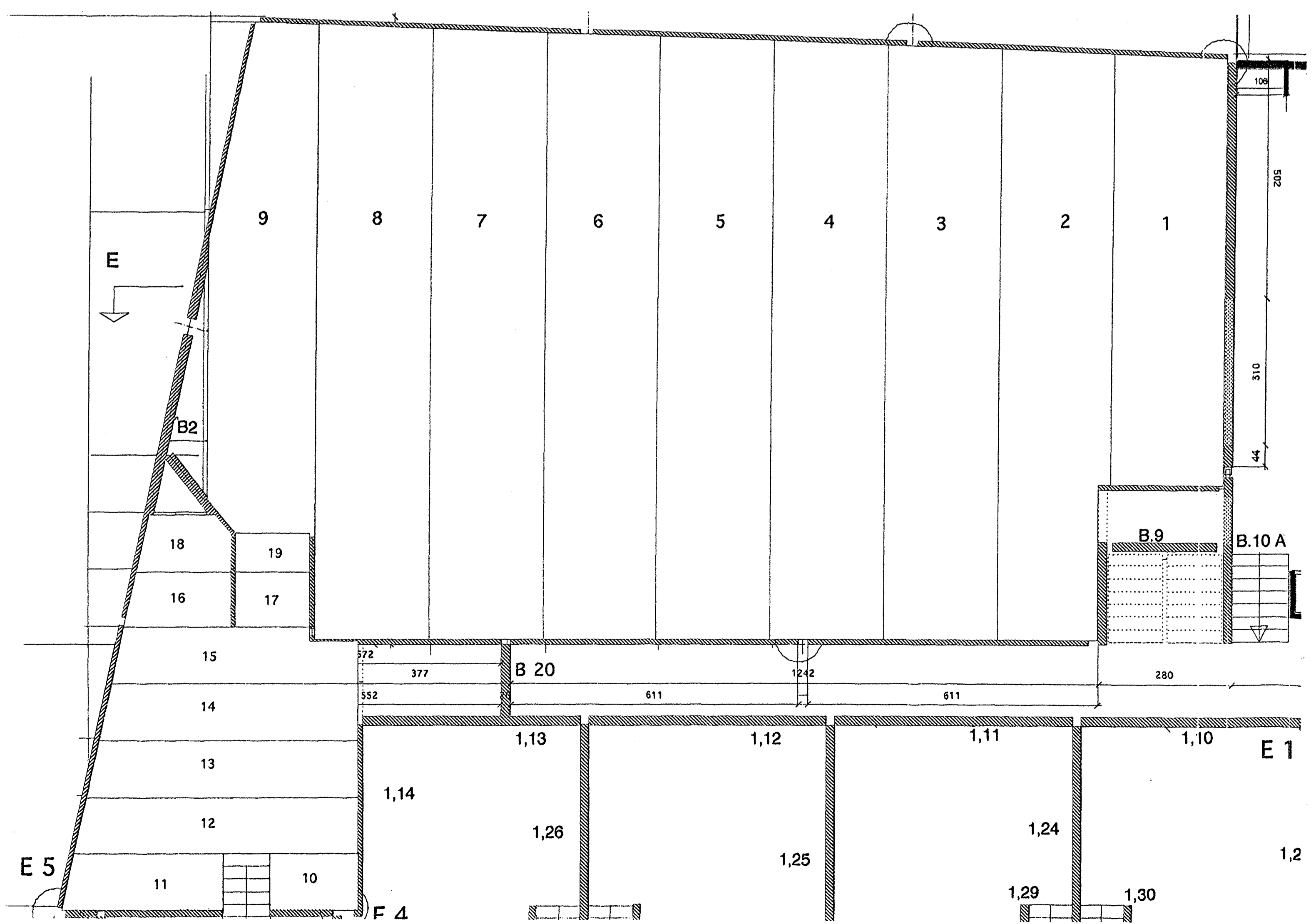
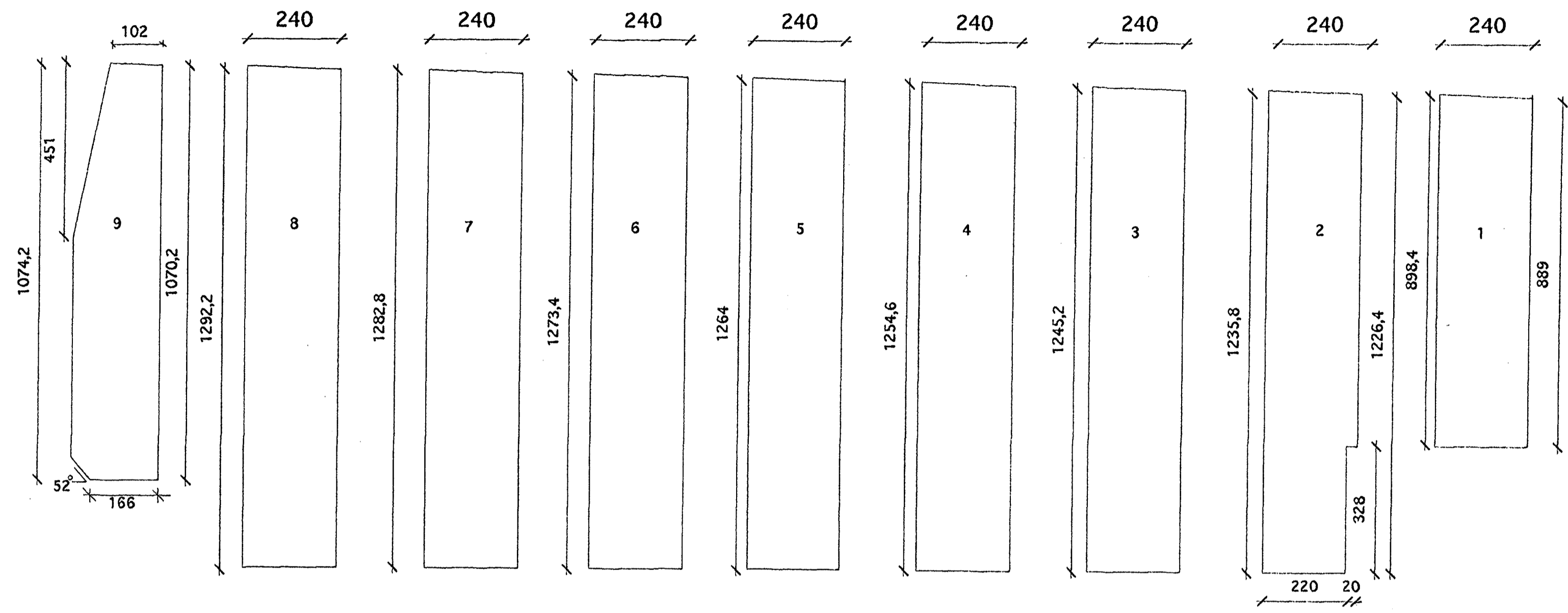
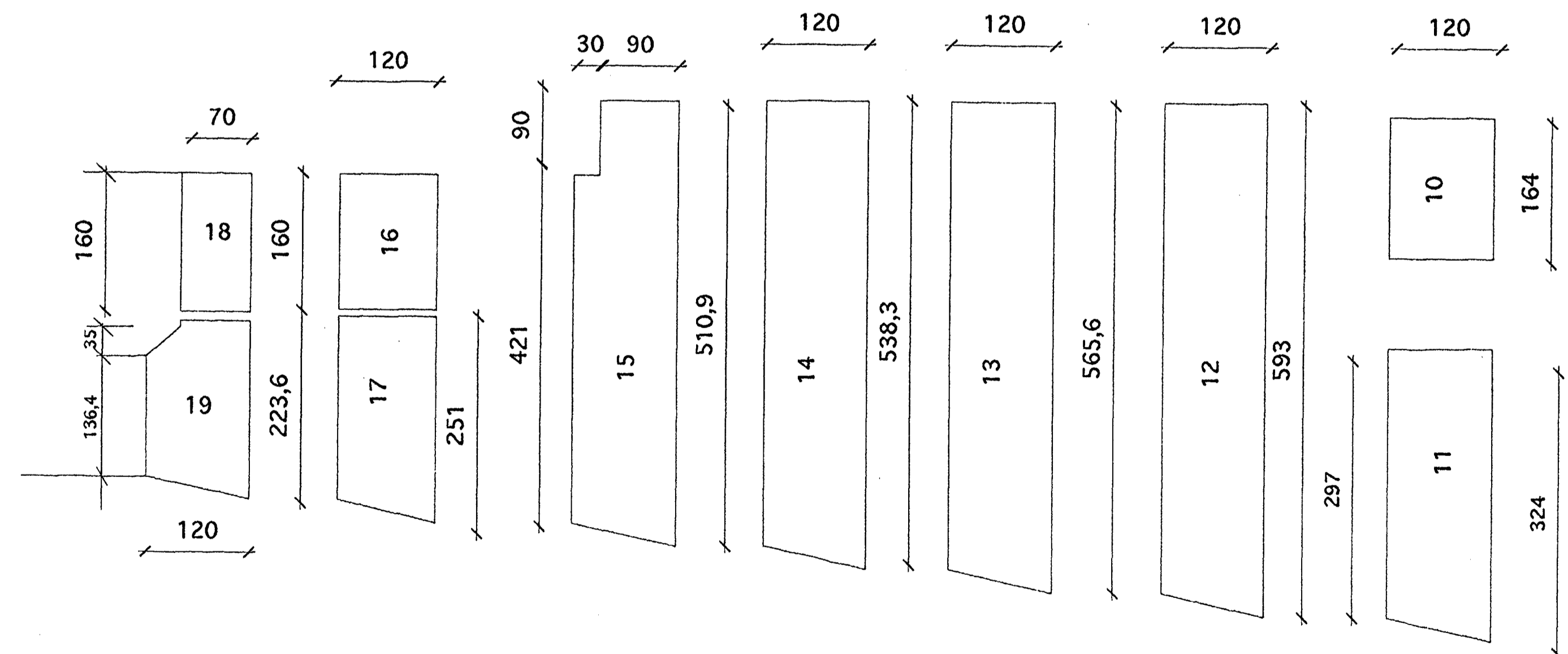


Rifjaplötur yfir bílageymslu



Fíligranplötur yfir geymslum



Steypa í fíligranplötum skal vera S 300
 Loftinnihald 3-6%
 V/S hlutfall minna en 0,5
 Sigmál 50 - 80 mm
 D max minna en 25 mm

Steypa í ásteypu skal vera
 S 250 minnst
 loftinnihald 3 - 6%
 V/S hlutfall minna en 0,5
 Sigmál 50 - 80 mm
 D max minna en 25 mm

Járnbanding Fíligranplatna :
 járnbanding platna nr 12,13,14,og 15
 skal vera k189+k12c/c150

járnbanding platna nr10,11,16,og17
 skal vera k189+k10 c/c600

Byggingafræðingur
 Algrönt Puma

09 JUNI 2000

Heiti	Hringbraut 4	Skjalnúmer	
Verkefni	grunnmynd af einingum Stærð & rifjaplötum og fíligranplötum	Dagur	07.03 -2000 nr. 1012
Örnun	BB / S I	Rekna nr.	
Rekna	BB		E.6E