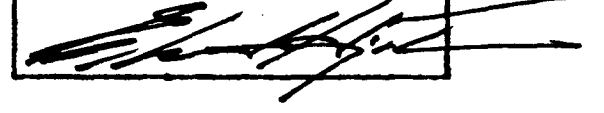
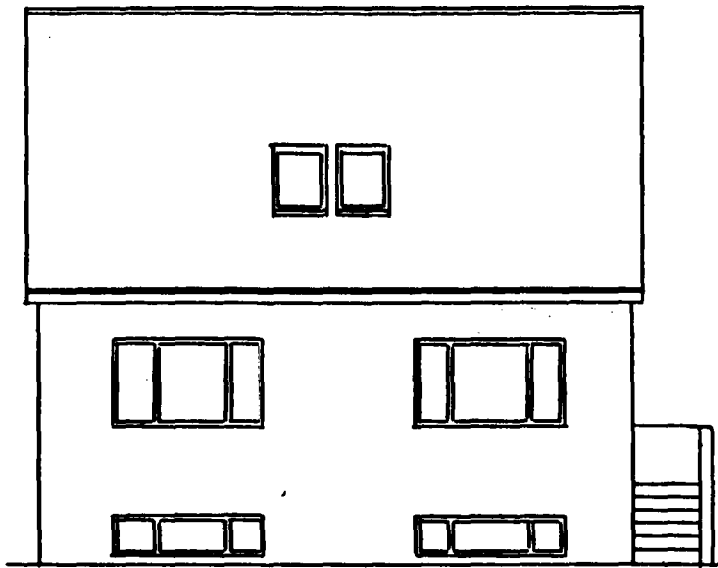
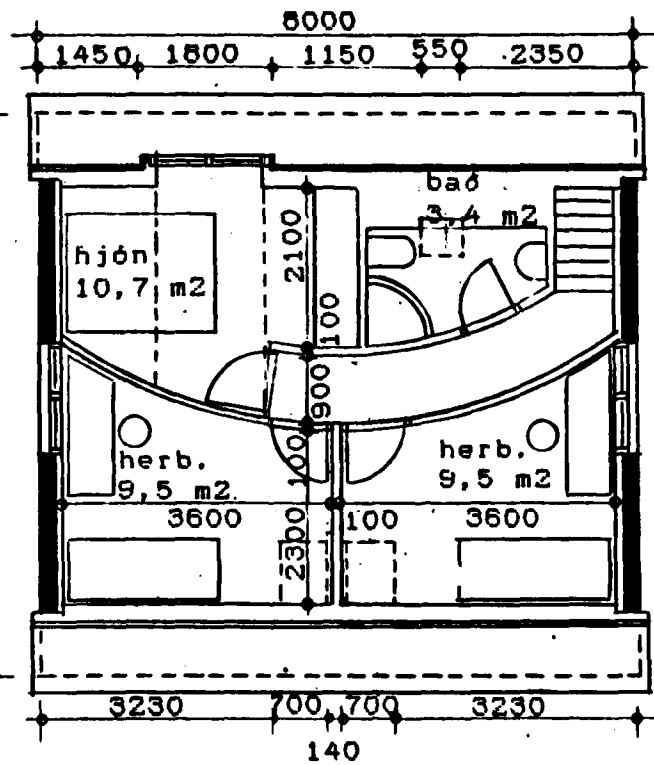


Samþykkt á fundi byggingar-  
nefndar þ. 11 / 8 1988

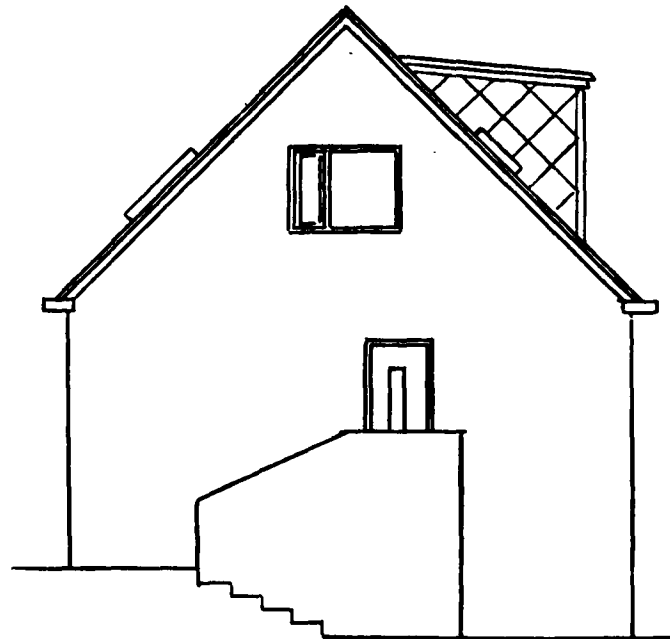
BYGGINGAFULLTRÚINN  
Í HAFNARFIRÐI

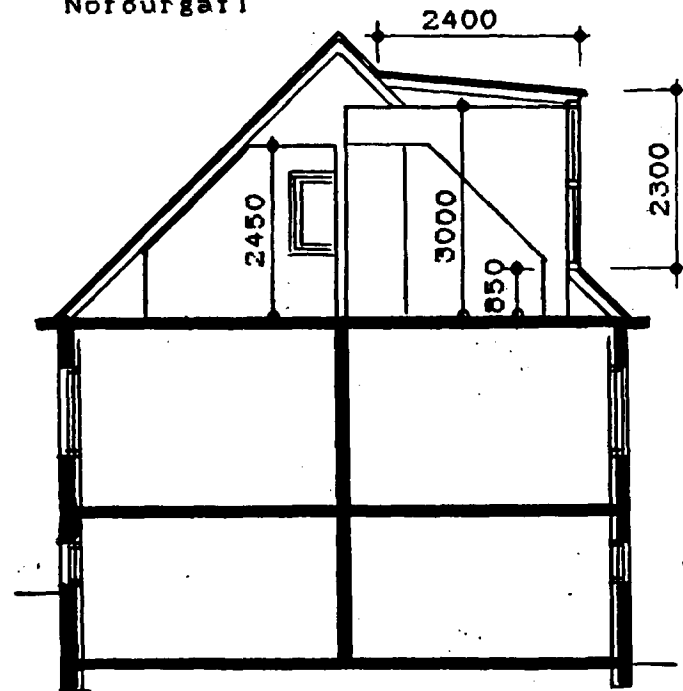
Austurhló



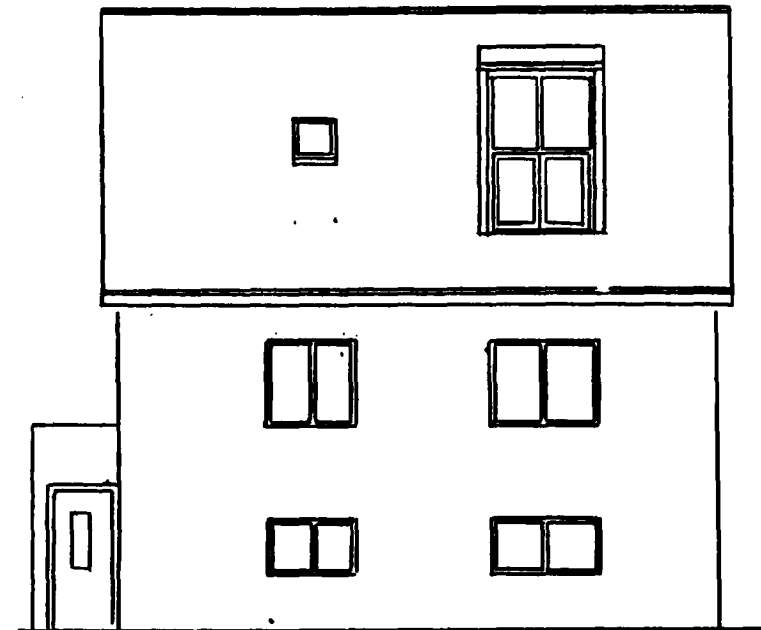
Rishæð



Norðurgafi



Skurður



Vesturhló

Brúttóflatarmál:

kjallari	63	m <sup>2</sup>
hæð	60	m <sup>2</sup>
ris	33,8	m <sup>2</sup>
<b>Samtals</b>	<b>156,8</b>	<b>m<sup>2</sup></b>

Rúpmál:		
fyrir stökkun	408	m <sup>3</sup>
kvistur	5	m <sup>3</sup>
<b>Samtals</b>	<b>413</b>	<b>m<sup>3</sup></b>

Risid er einangrað með 125mm steinull og klætt að innan með 13mm gipsplötum. Pakgluggar eru frá Velux, og eru opnanlegir. Neðri helmingur kvistglugga er opnanlegur.



ARKITÉKTASTOFA  
SIGURDUR EINARSSON FAI  
HAFNARSTRÆTI 17, S. 623355

HRINGBRAUT 52

Innrétting rishæðar og útlitsbreyting á þaki. 01

DAGS 25.07.88 | 22.08.88

KVARDI 1:100