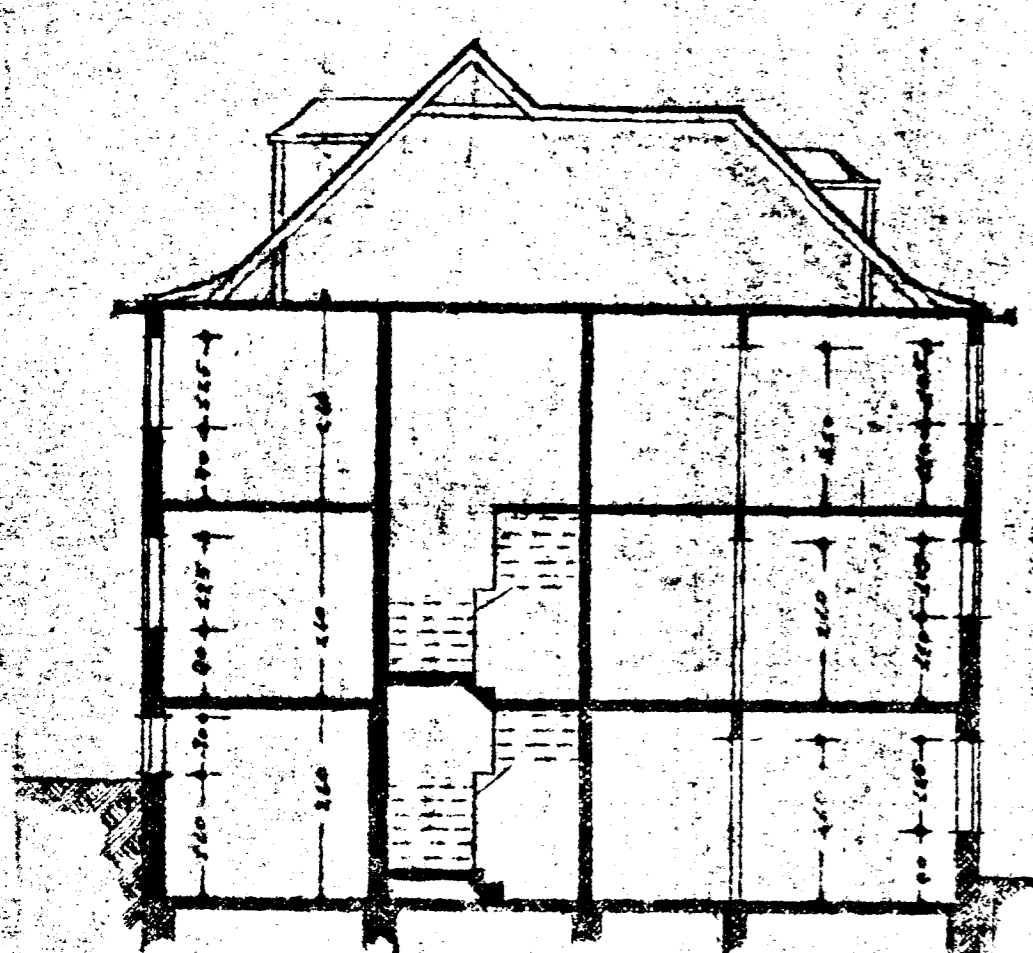
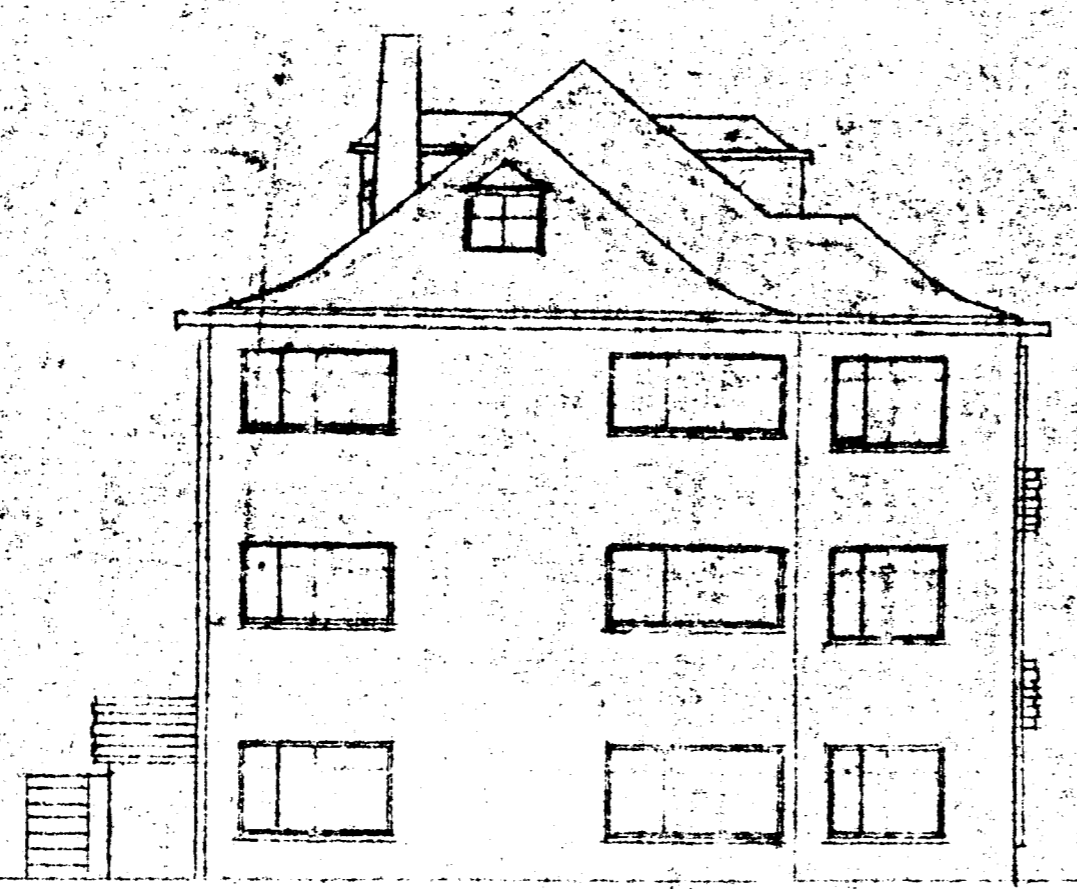


selt í svefnálmú,
 grátré veid. frá vesturlit
 húsinu og vottord byggingar.
 liggur fyrir eftir bryggingu.

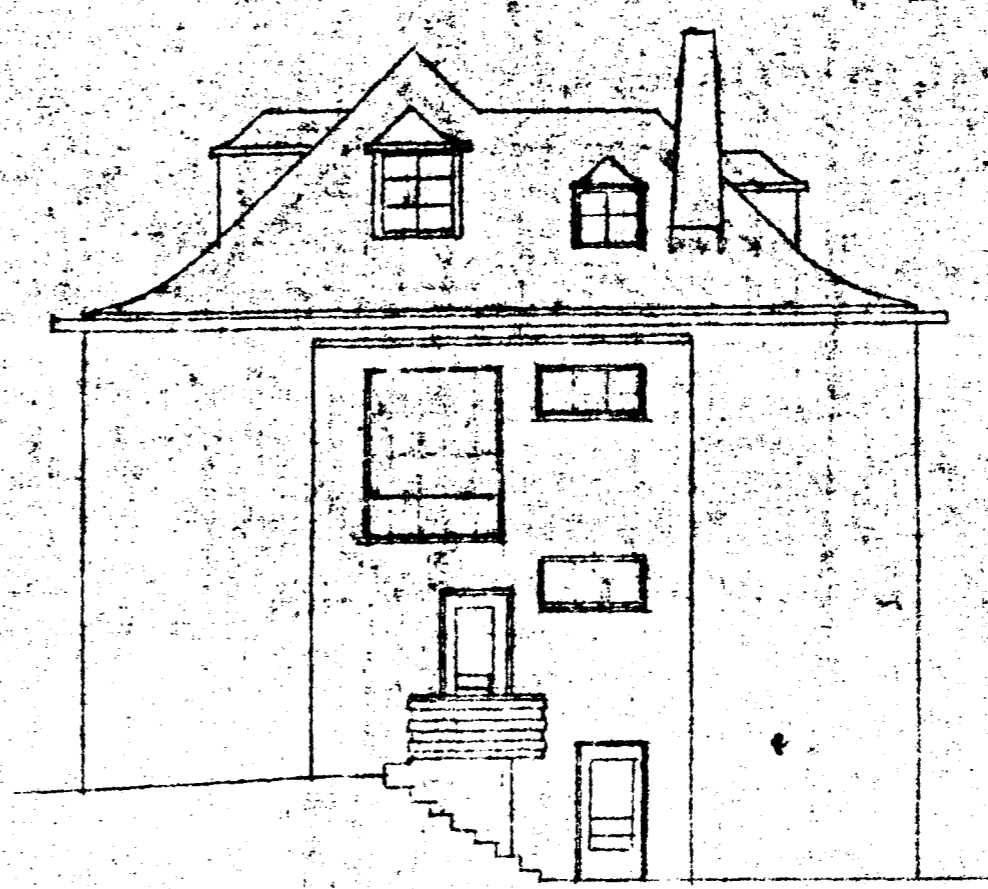
Sampykki á túni byggingu
 nefndar þ. 18.12. 1938
 BYGGINGAFULLTRÚINN
 HAFNARFIRÐI
 Erlendur Björnsson



SNURDUR



NOÐVÆSTUR



NORÐAUSTUR



SUNÐAUSTUR

